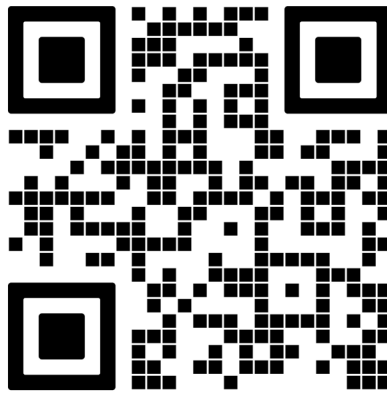


Panning System Installation Guide



-Scan here for a digital version-

Part # IG-126 - V.1.0 3/20/2026

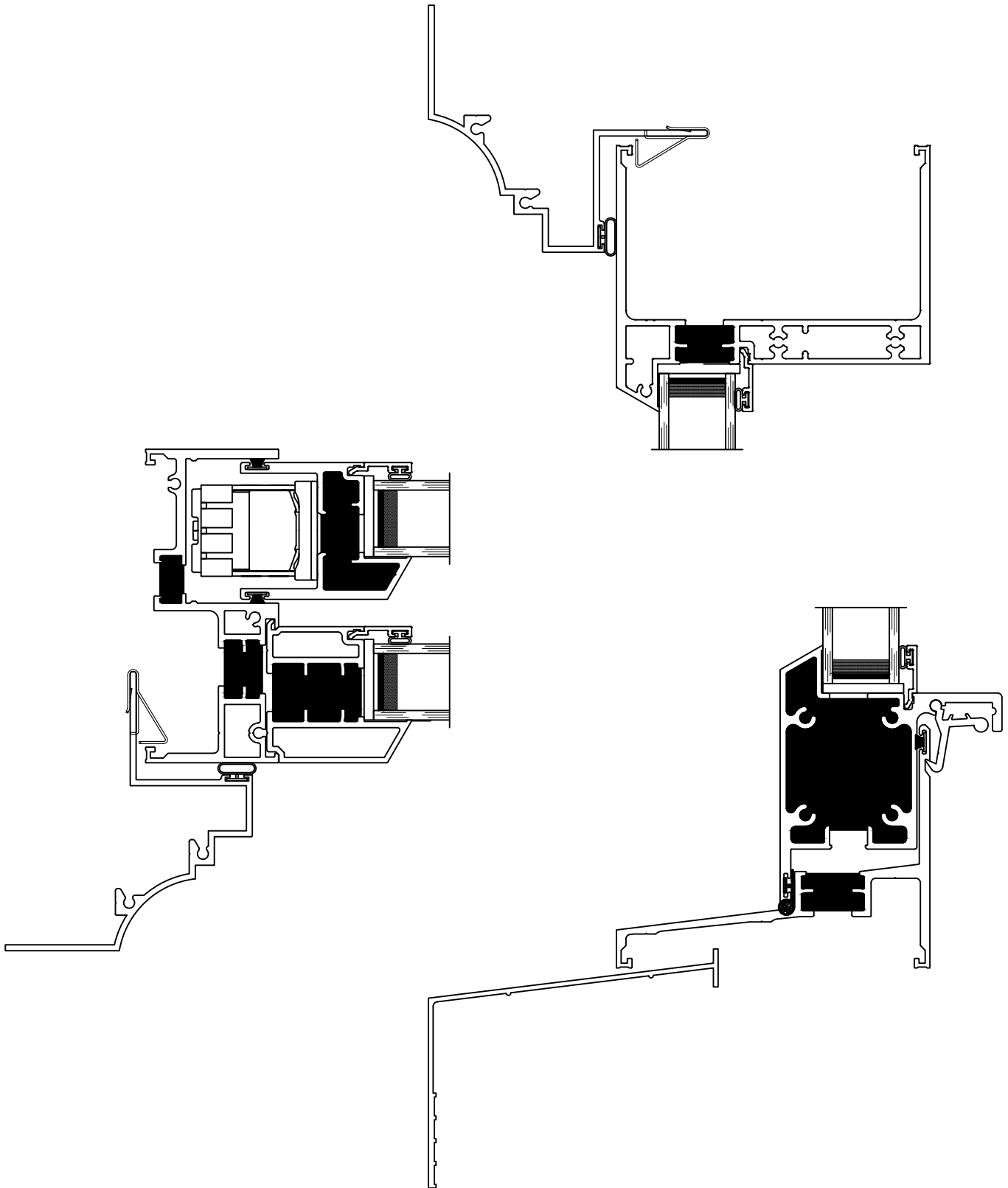
If this set of instructions does not match your installation method or the wall conditions of the job site, please call Quaker Customer Service for additional information.



Quaker Window Products
504 Highway 63 S
Freeburg, MO 65035
Phone: 800-347-0438
Fax: 573-469-4151
www.quakerwindows.com

Note:

While the details within these instructions are based on the H650 series window within the Panning System shown below, the installation and sealing methods also apply for the other Panning Systems offered by Quaker.



Tools Required by Installer



Materials Required by Installer



-Carefully read these instructions before starting any installation-

These are generic instructions that cover common situations and applications, which may not be appropriate for all installations due to building design, site conditions, construction materials, or installation methods used.

Consult Quaker for recommendations for specific applications not covered in these installation instructions.

Failure to install and maintain QUAKER® products according to these instructions may void any product warranty.

Please visit the Quaker website at www.quakerwindows.com, or call 800-347-0438 for additional information.

Tools

- Follow manufacturer's instructions and safely operate tools, ladders, or scaffolding. Always wear safety glasses. Failure to do so could result in injury, product, or property damage.

Handling

- Do not store QUAKER products outside or in an unprotected, high moisture, or high heat environment prior to installation. Doing so could result in product damage.
- Do not carry, transport, or store QUAKER products in a flat (horizontal) position. Doing so could result in product damage or injury.
- Window and door units should be kept or stored in an upright (vertical) position, with support across the sill to avoid bowing. Do not lay any units in a flat position!

Glass

- If glass gets broken, please exercise caution, as glass fragments can cause lacerations or other injuries. In many areas, local building codes require safety glass to be used in certain applications. All QUAKER products are available with safety glass if they are ordered that way.

Fastening

- Metal fasteners and components could corrode when used in contact with preservative-treated lumber. Use approved and appropriate fasteners and components to fasten QUAKER products in this application. Failure to do so could result in a product performance failure, injury, or property damage.
- Quaker does not provide anchorage or fastener calculations.
- Quaker is not responsible for determining structural adequacy of the anchorage and fasteners used to install QUAKER products, or the openings into which they are installed.

Installation

- Report any damage to dealer immediately. Do not install product if damaged. Quaker is not responsible for addressing products that are damaged after delivery, or product that is installed in a damaged condition.
- Always support window or door products in an opening until fully fastened. Failure to do so could result in the product falling out of an opening and causing injury, product, or property damage.
- Nailing flanges and drip caps (integral or applied) do not take the place of window flashing. All QUAKER products must be properly flashed and sealed with material compatible sealant for protection against water and air infiltration around the entire exterior perimeter. Failure to do so could result in a product installation failure and property damage.
- Windows and doors must be properly shimmed. To properly shim a QUAKER product, follow relevant installation guidelines, and never set a window directly on a sill plate. Failure to shim properly is an installation failure that could result in product performance failure or property damage.
- Construction directly above an opening must be engineered and designed not to transfer loads directly to any windows or doors. If live or dead loads are transferred to a QUAKER product, this may affect functionality and result in glass failure or otherwise damage frame joinery, perimeter seals, or other aspects of the product. Proper construction of the rough opening must take place prior to the installation of the QUAKER product.
- Please confirm that any necessary vertical deflection of the head condition is consistent with the selected QUAKER product. Most QUAKER products are not designed to allow any deflection at the head condition. Shop drawings may indicate the maximum allowable vertical deflection at the head condition of a QUAKER product. If vertical deflection is a concern but shop drawings are not provided, please contact Quaker for assistance.
- Windows and doors have small parts that, if swallowed, could pose a choking hazard to young children. Please dispose of unused, loose, or easily removed small parts. Failure to do so could result in injury or death.
- Do not drill through or into the sill or frame of any QUAKER products, whether to install alarm wires or for any other reason.

Sealing

- Follow supplier instructions for proper application of minimally expanding foam, sealant, water resistant barrier or liquid barrier, and flashing products and systems to ensure safety, proper material application, compatibility, and to understand the need for periodic maintenance for continued weather resistance of their products. Failure to do so could result in product performance failure or property damage.
- Minimally expanding foam insulation must be compliant with AAMA 812.
- If silicone is selected as an appropriate sealant, Quaker recommends using 100% neutral cure silicone sealant, that is ASTM C920 compliant. Always clean and prepare the surfaces where the sealant will be applied per the manufacturer's recommendation. Once applied, properly tool the sealant in place. Failure to do so could result in product performance failure or property damage.
- Flashing tape must meet ASTM-D779 performance requirements.
- Maintain and properly seal a minimum of 1/4" gap (or whatever is specified within these installation instructions or shop drawings) around the perimeter of the window or door frame and the exterior finish materials. Failure to do so could result in product installation failure or property damage.

Joining

- Do not join any Quaker product to another product that is not designed for joining. Joined products must be individually supported in the opening. Failure to do so could affect operation and product performance and could result in a product installation failure or property damage.

Cleaning

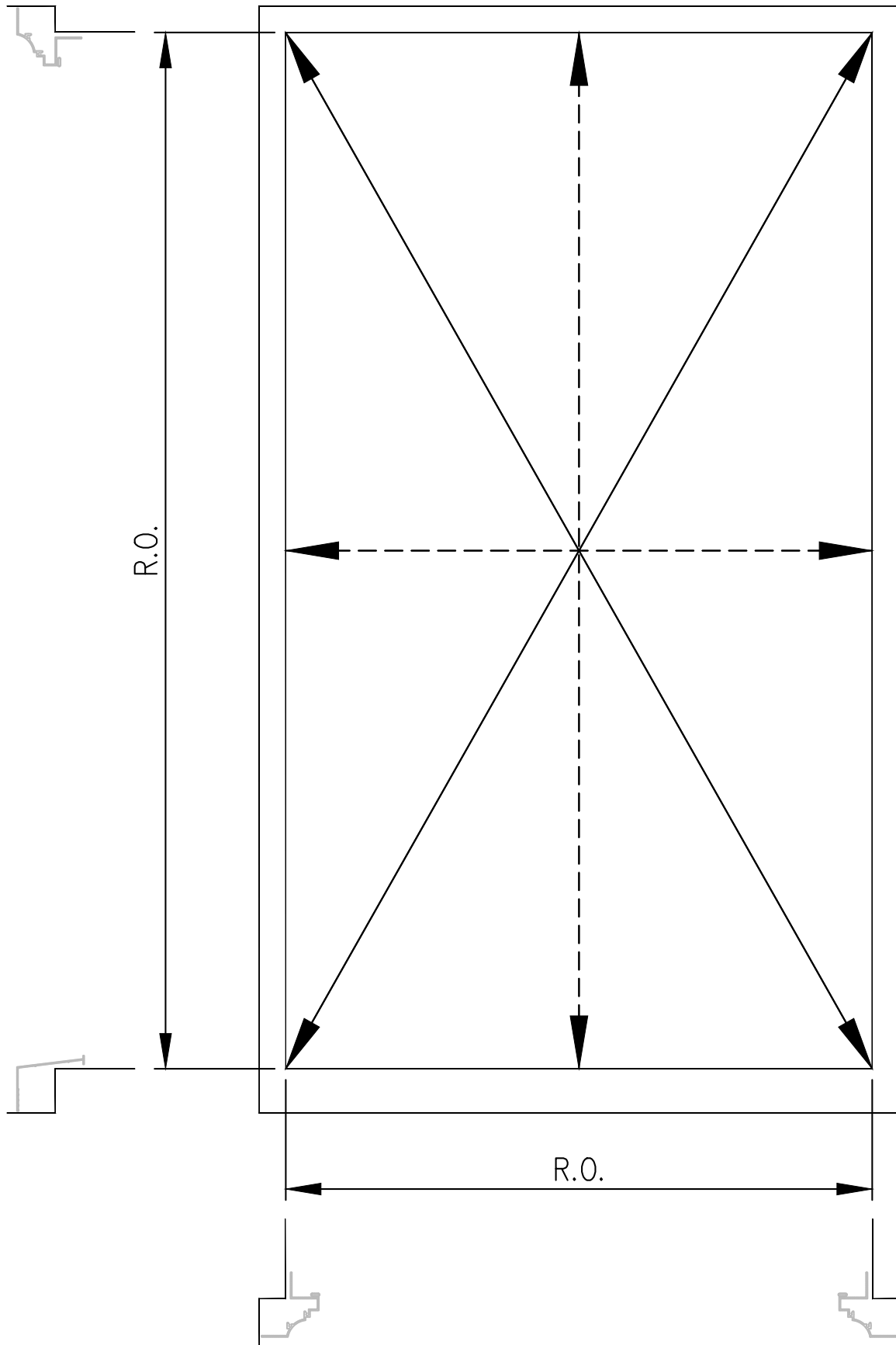
- Do not use any cleaning agent other than a mild, non-abrasive window washing solution or glass cleaner applied in accordance with any product labeling instructions and Quaker's care and maintenance instructions. The use of harsh chemicals (such as brickwash, bleach, alcohol, hydrochloric acid, or muriatic acid) for cleaning or other purposes may damage QUAKER products, glass, fasteners, hardware, seals, sealant, or metal flashing. Please protect these products by following the cleaning product's instructions for its proper use.
- Do not use a razor blade to clean a glass surface, as damage to the glass may result.

IMPORTANT

- Buildings constructed prior to 1978 may contain lead paint which could be disturbed during window or door replacement. For more information on proper management of lead paint, go to: www.epa.gov/lead
- Care must be taken to properly recycle or dispose of used or old materials. Any recyclable material should be separated from non-recyclable or hazardous materials. Please consult with local or state authorities regarding proper disposal of non-recyclable or hazardous materials.
- Inspect all window and door units for any damage or defects prior to installation. Contact the nearest QUAKER distributor if there are any problems or issues.
- **WARNING:** This product can expose you to chemicals, including titanium dioxide or methanol, which are known to the State of California to cause cancer and birth defects or other reproductive harm. For more information go to www.P65Warnings.ca.gov
- **WARNING:** Drilling, sawing, sanding, or machining wood products can expose you to wood dust, a substance known to the State of California to cause cancer. Avoid inhaling wood dust or use a dust mask or other safeguards for your personal protection. For more information go to www.P65Warnings.ca.gov
- When installation is completed, operable window and door products, and related hardware or equipment, may require some adjustments. Confirming operability and making minor adjustments are within the scope of the installation services performed by others.

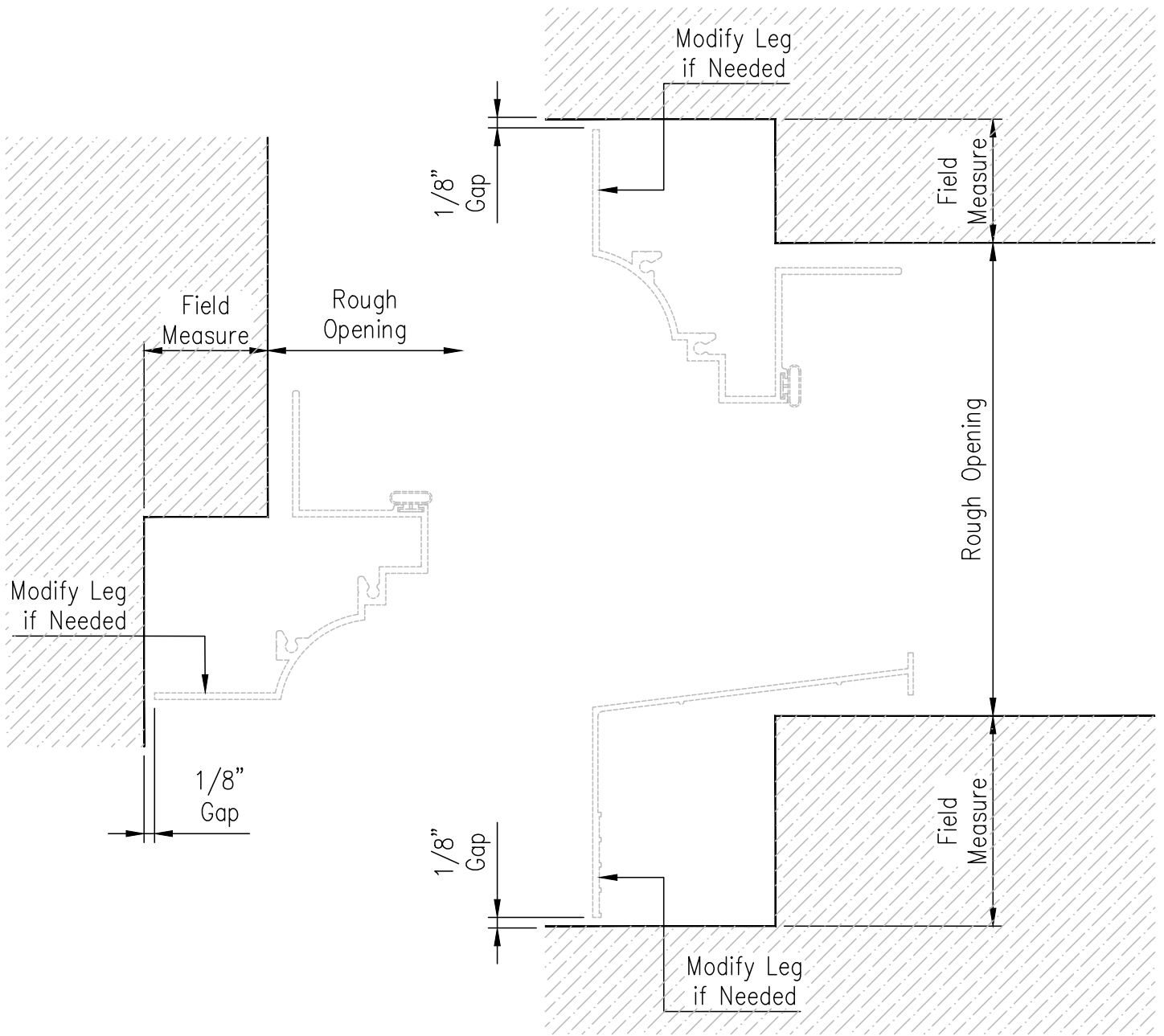
RO1

Measure and verify the size of the rough opening. The rough opening should be 1" wider and 1" taller than the Window Unit, unless otherwise specified on the shop drawings. Verify the rough opening is flat, plumb, level, and square. Take diagonal measurements to check for square.



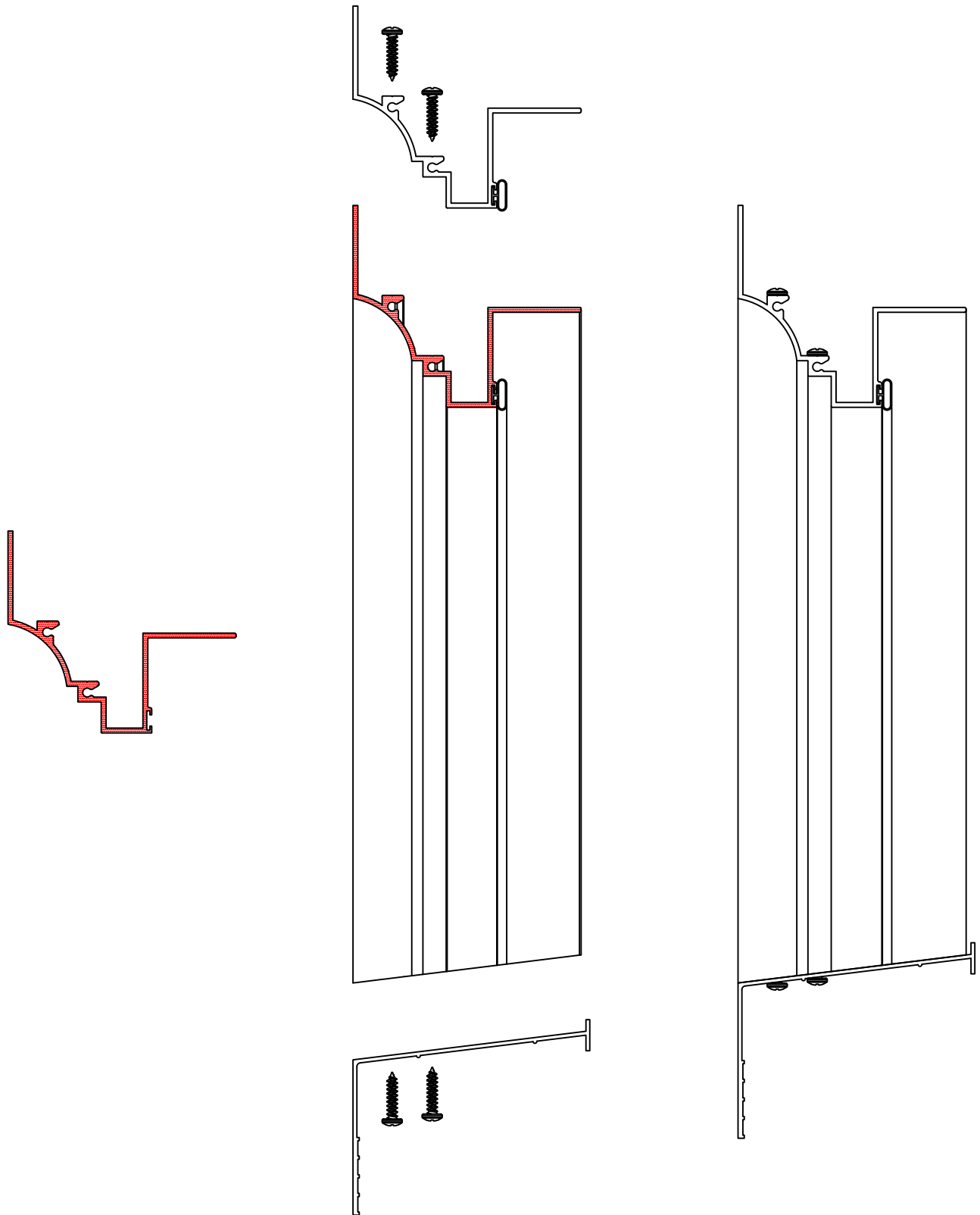
RO2

Now measure the distance from the rough opening to the exterior masonry (exterior facing) opening. Measure this distance in at least four (4) different areas. If needed, trim the panning member legs to fit and try to leave no more than a 1/8" gap.



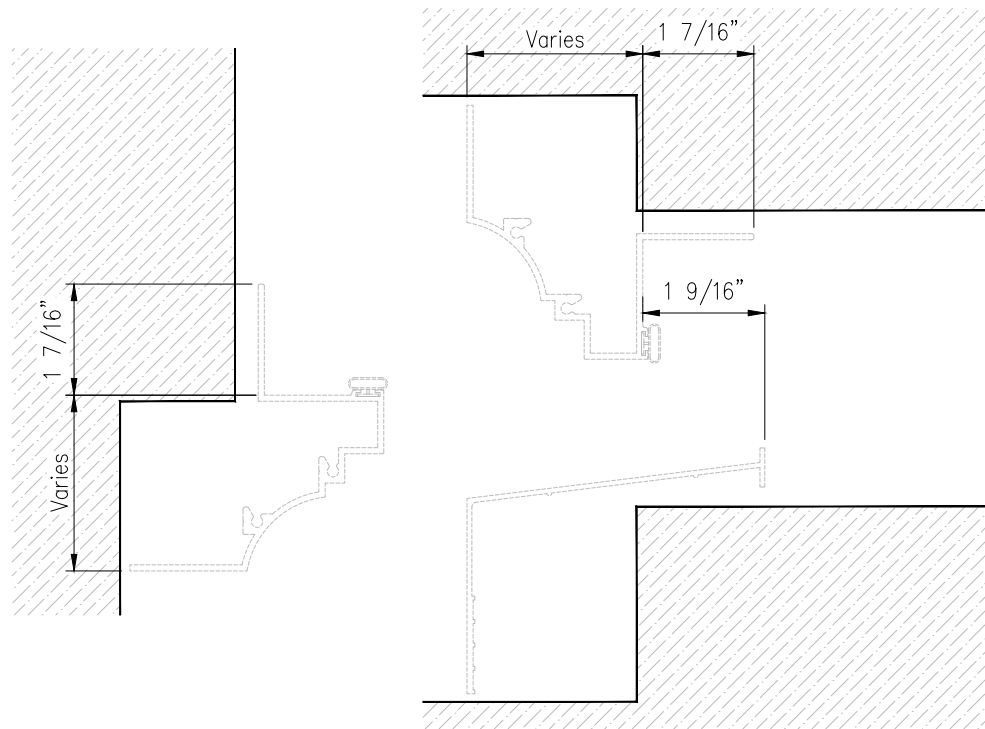
PA1

After verifying the opening size, assemble the Panning System. Apply sealant to the top ends of the Jamb members, and screw the Head member in place with the supplied fasteners. Tool sealant as needed. Then apply sealant to the bottom ends of the Jamb members, and screw the Sill member in place with the supplied fasteners. Tool sealant as needed.



PA2

Before installing the Panning System into the opening, locate and mark where the unit is to be placed at the interior and exterior.

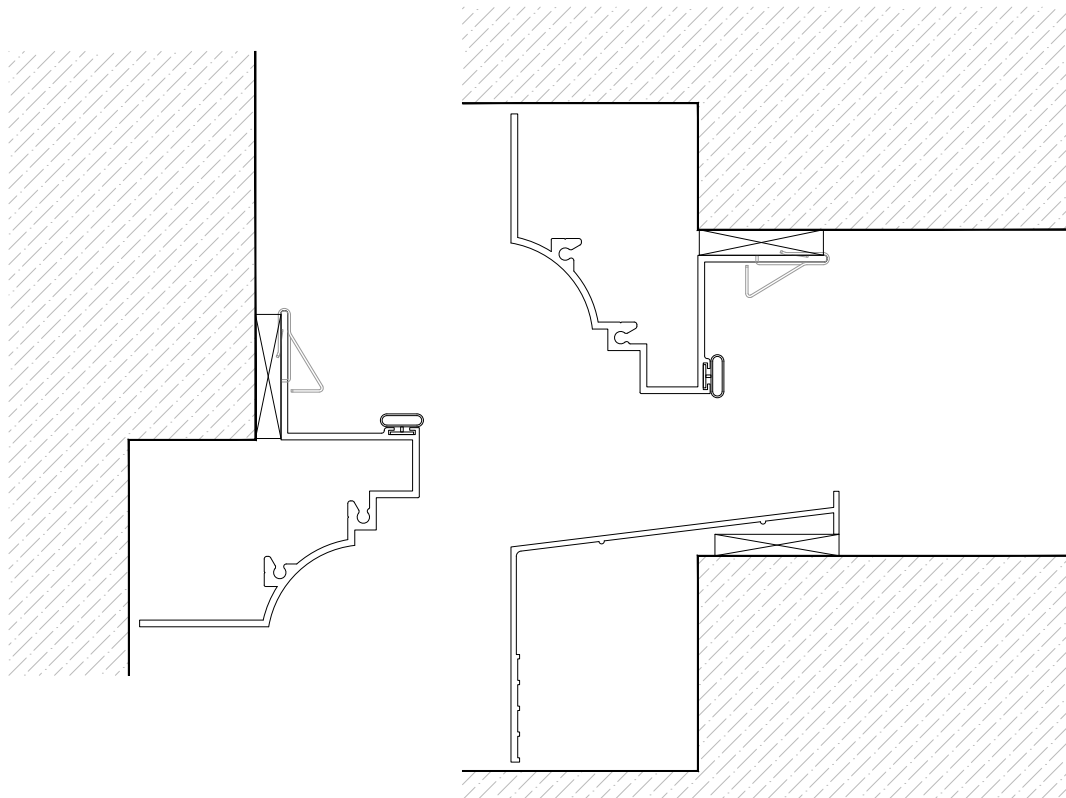


PA3

Install the assembled Panning System into the opening. From the exterior, push the unit into place using your marks to locate position. Use plastic shims at the perimeter head, sill and jambs.

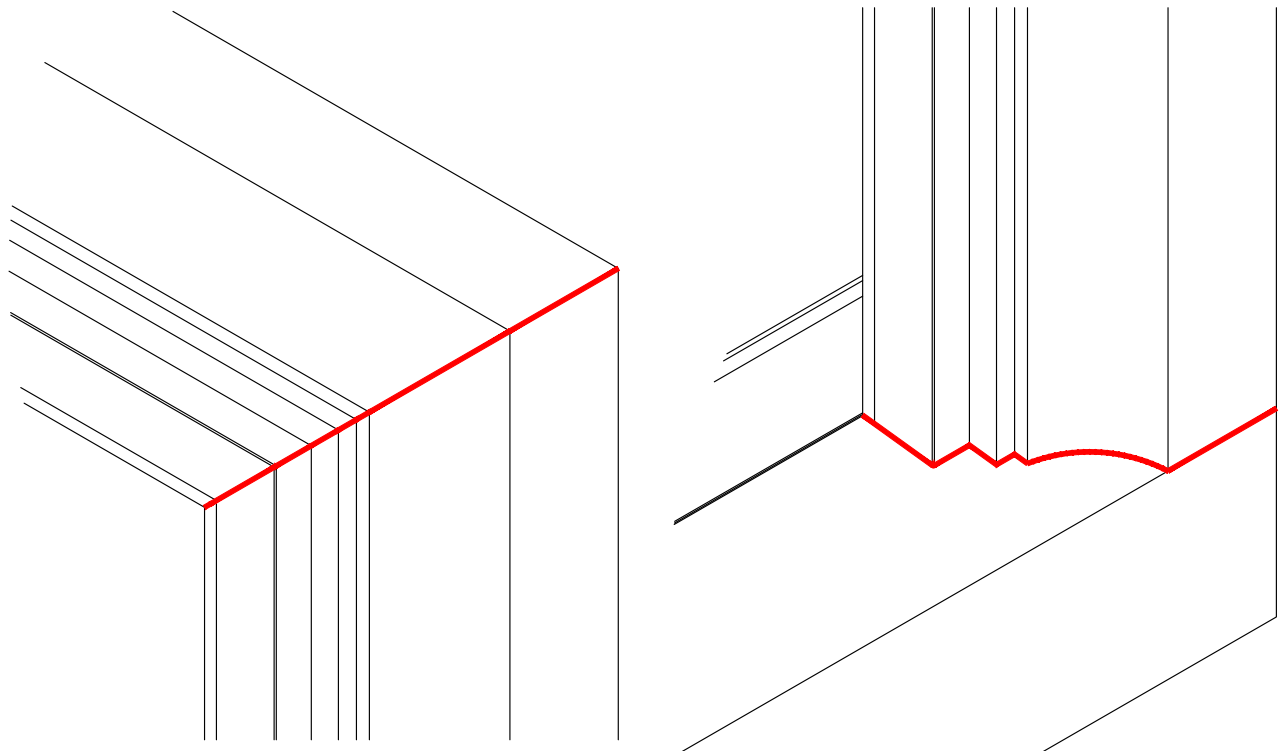
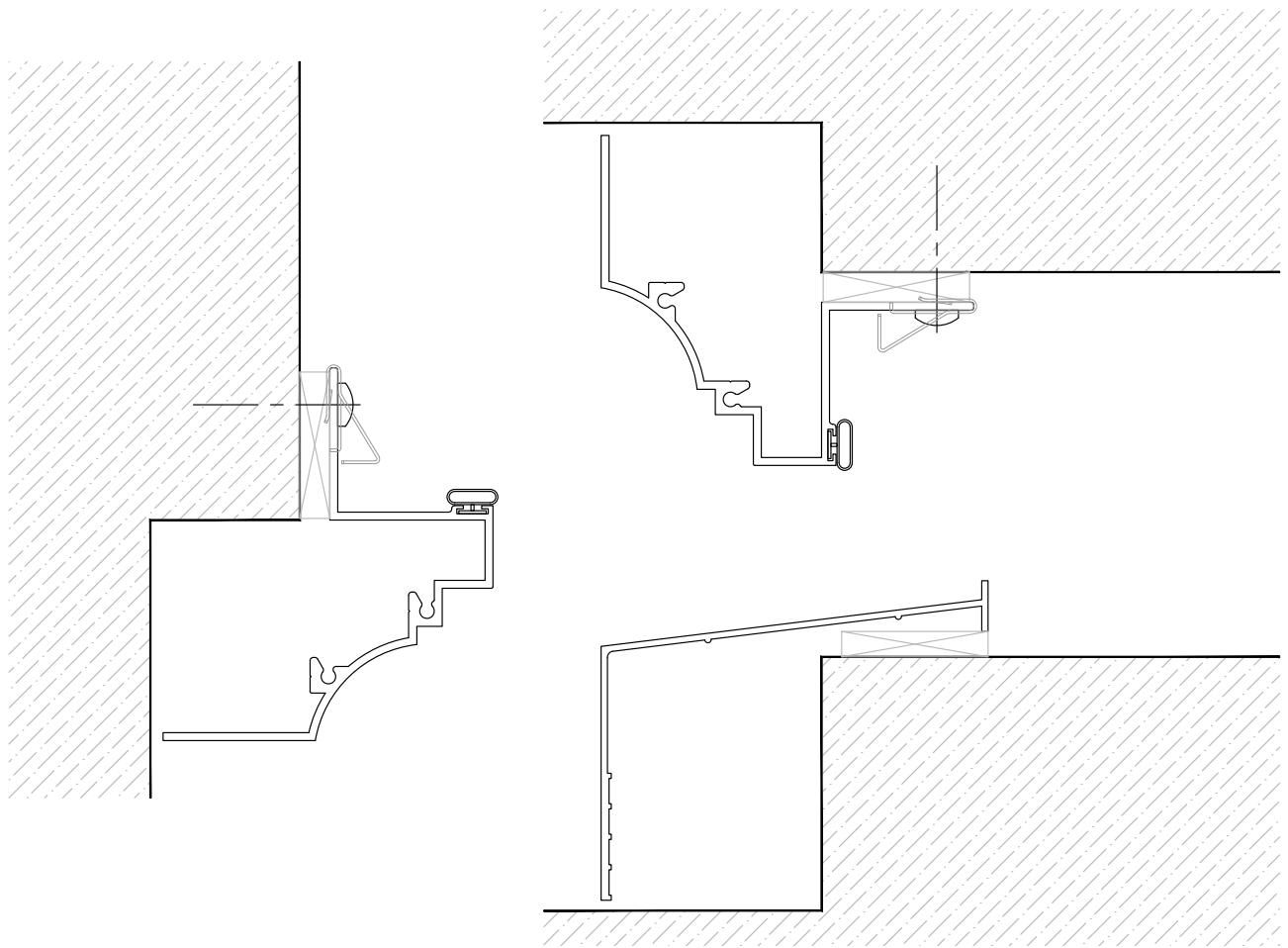
Make sure the unit is square, plumb, and level.

DO NOT PLACE WINDOW UNIT DIRECTLY ON THE BUILDING STRUCTURE WITHOUT SHIMS.



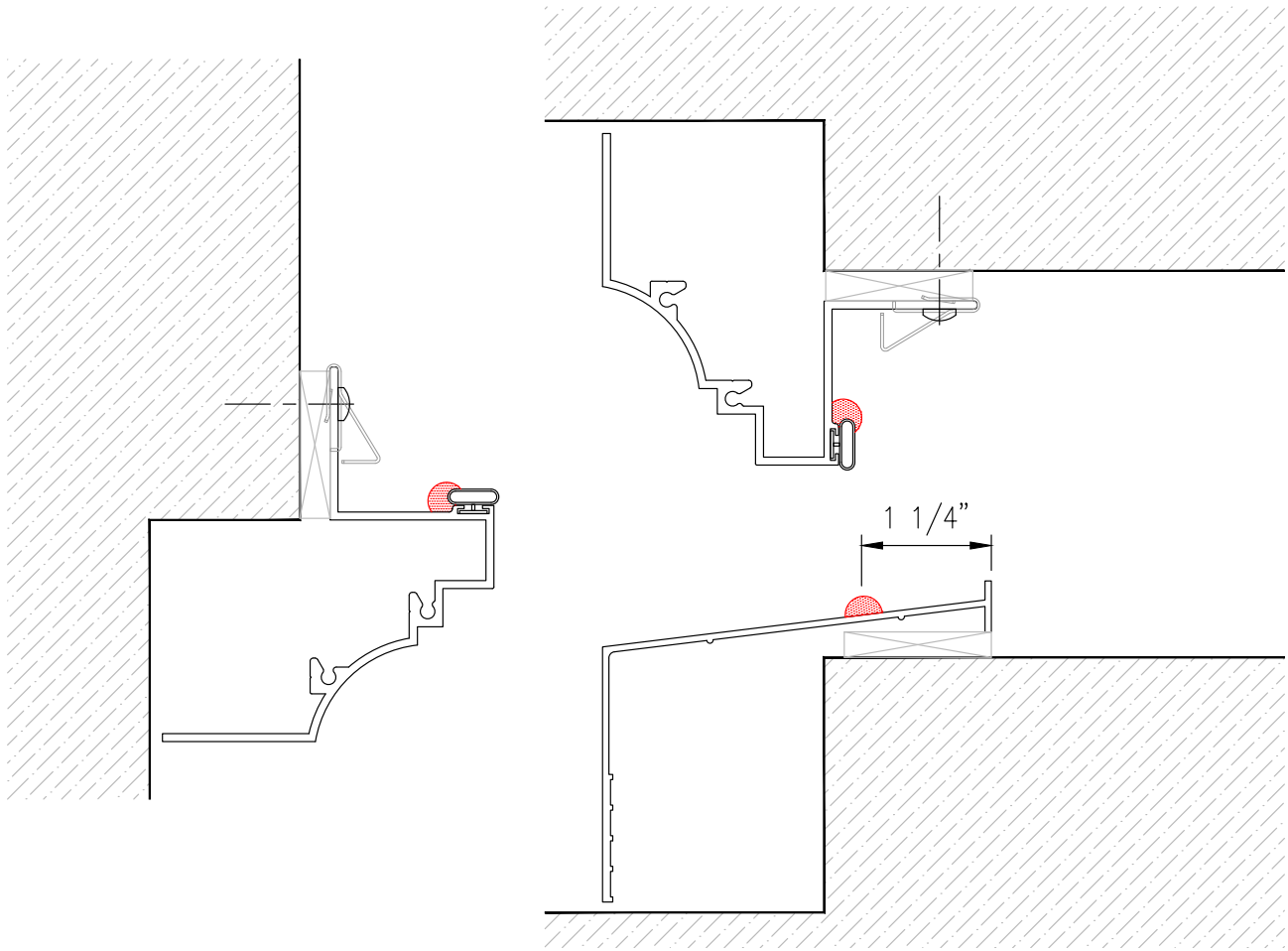
PA4

After shimming the Panning System, anchor the head and jambs to the building structure. Drill pilot holes in the surrounding conditions and fill with sealant. Use the fastening method shown on the Shop Drawings or Structural Calculations. Do not over-tighten the fasteners. Securely seal all exterior metal-to-metal corner joints and tool as needed.



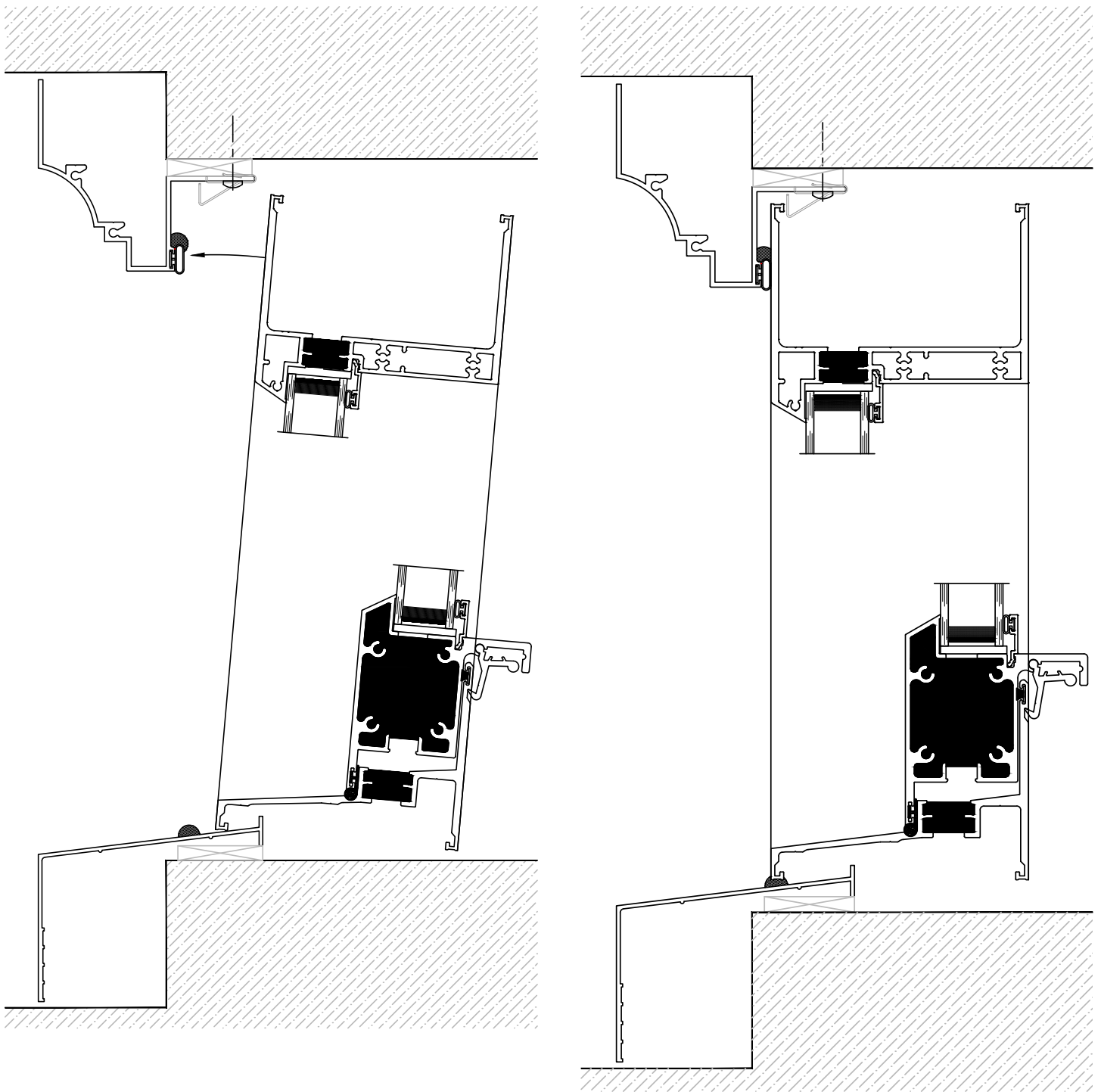
PA5

Before installing the Window Unit, apply a continuous bead of sealant along the head and jamb weathering bulbs as shown below. Also, run a bead of sealant along the sill where shown.



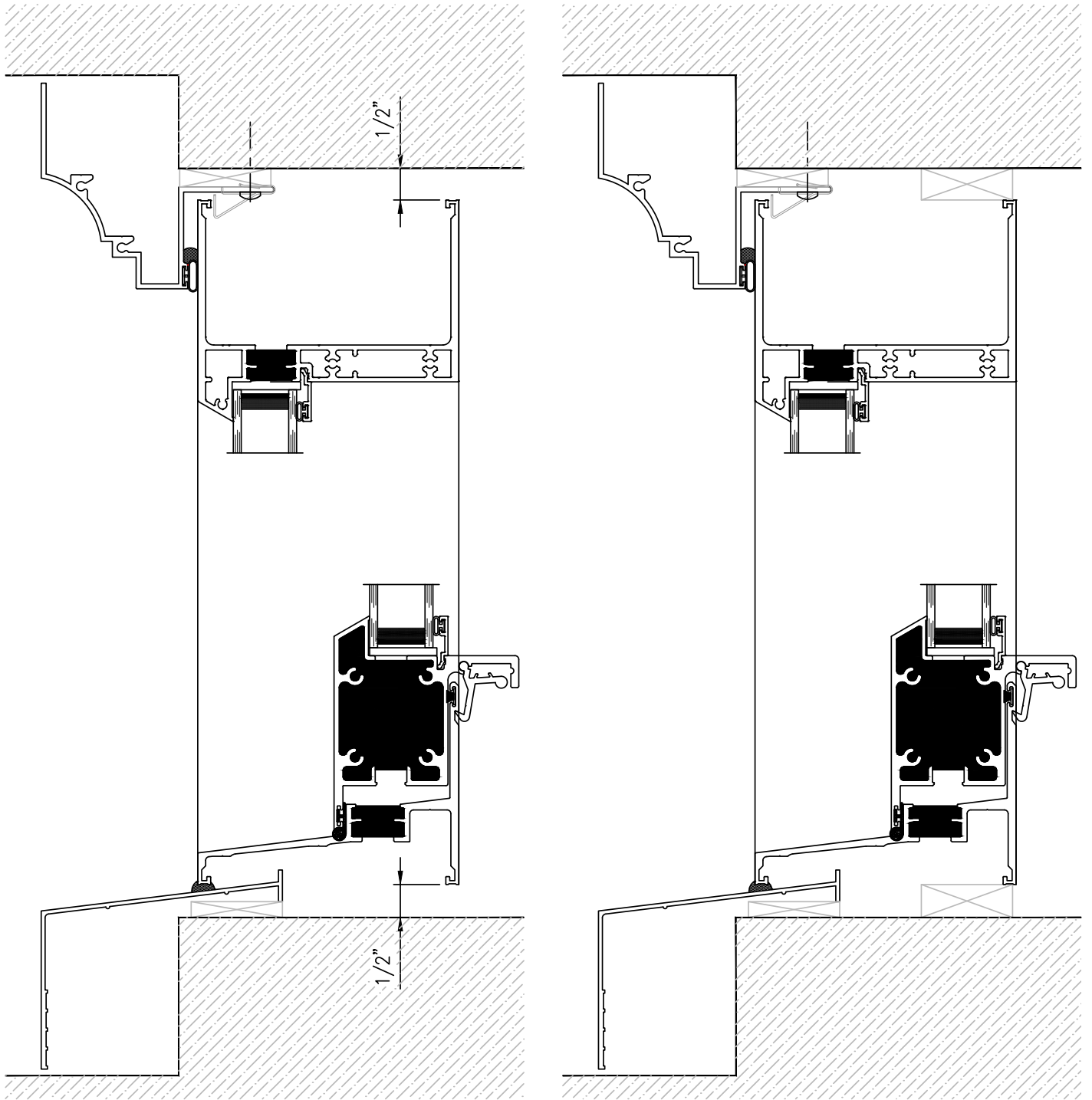
PA6

Install the Window Unit by lifting it over the Sill Pan, and then pushing it firmly forward until all of the Clips are engaged, and the unit sits against the exterior head and jamb weathering.



PA7

After the Window Unit is installed, adjust to allow 1/2" shim spacing, then add plastic shims at the perimeter head, sill and jambs.



REFER TO THE SHOP DRAWINGS AND THE APPROPRIATE INSTALLATION GUIDES FOR PERIMETER FASTENER AND SEALING INSTRUCTIONS OF THE WINDOW UNIT.

PA8

When the Window Units are fully installed, securely fastened, and sealed, proceed to the exterior and apply sealant to the entire perimeter of the Panning System as shown below. Tool as needed.

Sealing around the Window perimeter to the Panning System is optional.

