



H660

HISTORICAL ALUMINUM SERIES

Single Hung









 **Product Material**
Aluminum

 **Frame Depth**
4 1/8"

 **Rating**
Single Hung: AW75

The Bell
(formerly Bell Telephone Offices)
Trenton, NJ
Owner/Developer/Contractor:
Ajax Management



 Design Pressure Single Hung: 75	 U-Value* Single Hung: .28 - .43
 Air Infiltration Single Hung: <0.30	 SHGC* Single Hung: .15 - .32
 Water Resistance Single Hung: 12	 CR* Single Hung: 42-60
 OITC^x Single Hung: 24-31	 STC^x Single Hung: 31-35
<small>*-Ranges based on multiple Low-E/Argon I.G. combinations ^x-Ranges based on multiple I.G. combinations</small>	

FEATURES:

- ▶ Historically-correct bevel exterior frame
- ▶ Architectural grade aluminum frame
- ▶ Thermally-broken frame and sash with pour-and-debridge technology
- ▶ No fin main frame for retro-fit purposes
- ▶ Alternative model with Nail fin (H665 Series)
- ▶ Expanded meeting rail for increased strength and fortification at the window's center
- ▶ 1" insulating glass
- ▶ Heavy-duty Class 5 balancers
- ▶ Auto lock sill
- ▶ Standard High-Performance 2604 Powder Paint Finish (an FGIA Specification)
- ▶ Optional Upgrade to 2605 Powder Paint Finish (an FGIA Specification)
- ▶ 30+ "Quick-Pick" colors, with unlimited custom colors available

www.QuakerCommercialWindows.com

Information listed is deemed accurate as of date shown. Quaker Windows reserves the right to change or discontinue any product, feature or option without notice.

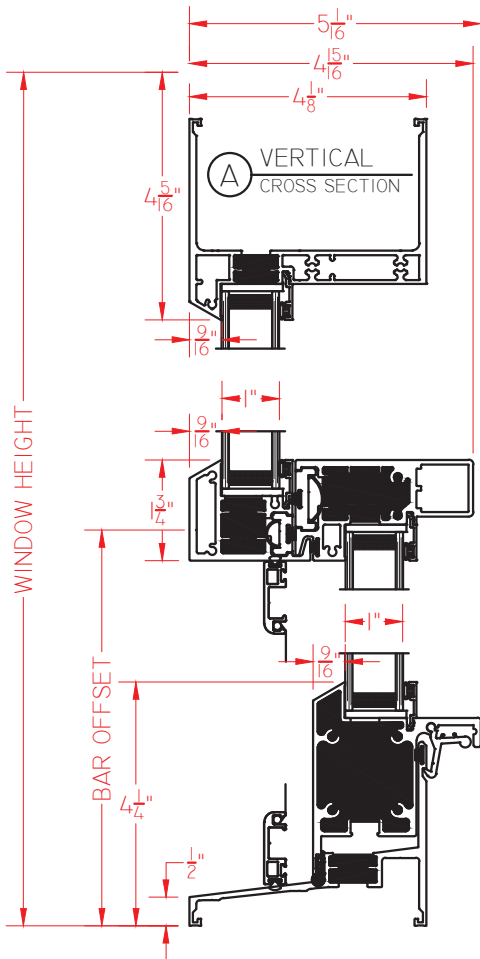
April, 2026 V2



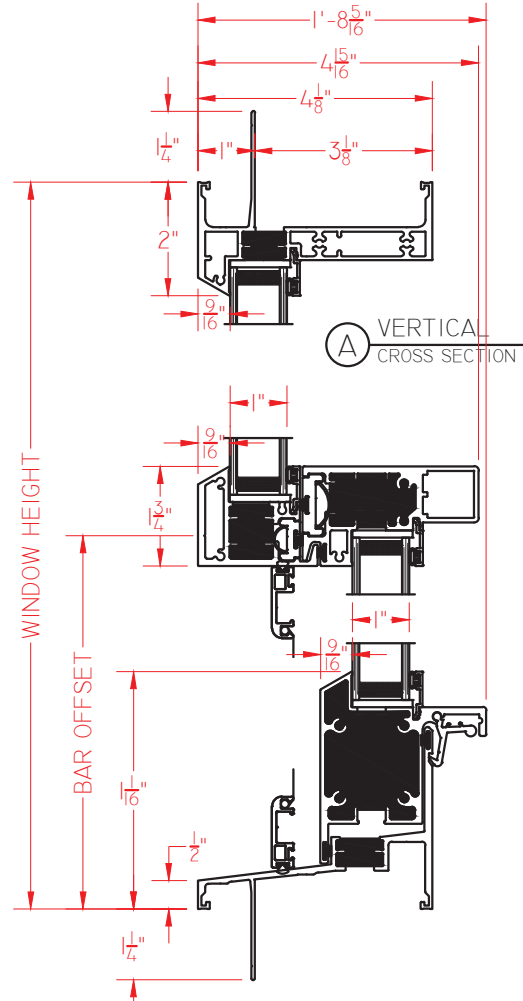
H660

HISTORICAL ALUMINUM SERIES

H660 Series Single Hung
(no nailing fin)



H665 Series Single Hung
(with nailing fin)



QuakerCommercialWindows.com
1-800-347-0438
Commercial@quakerwindows.com