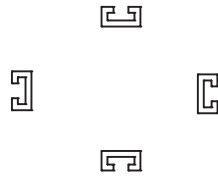


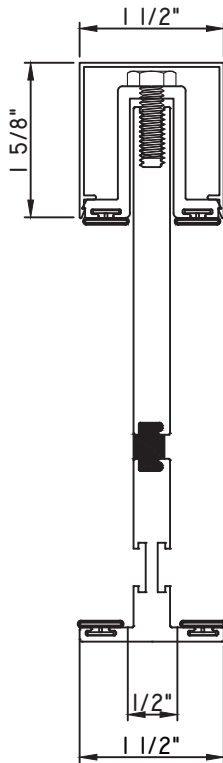


# C600/C605 Series Casement, Project-Out, Fixed Vertical Mulls

All information seen within this document are considered current. However periodic changes/updates to our products are necessary. Quaker Window Products Inc. reserves the right to change any information without notice.



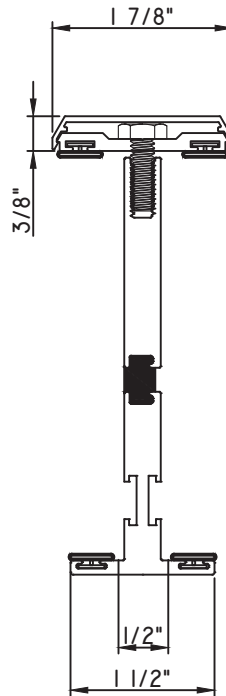
**C-MULL**  
M6270



**T-MULL**

- M24497 - T-MULL (New Die)
- M24495 - BASE (New Die)
- M24496 - CAP (New Die)
- M13404 - L-ANGLE (QTY. 2)
- BPN-9159 - W.S. (QTY. 4)
- MH1/4 20X3/4 - BOLTS (18" APROX. O.C.)
- TBD - ANCHOR (QTY. 2) (NEW ANCHOR)
- MPS-8X1 1/2 - FASTENERS (QTY. 2)

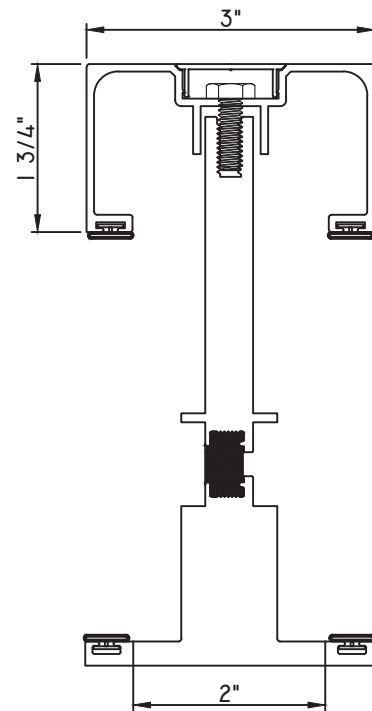
**CAN ONLY BE USED WITH C600**



**T-MULL**

- M24500 - T-MULL (New Die)
- M23056 - BASE
- M23058 - CAP
- M13404 - L-ANGLE (QTY. 2)
- BPN-9159 - W.S. (QTY. 4)
- MH1/4 20X3/4 - BOLTS (18" APROX. O.C.)
- TBD - ANCHOR (QTY. 2) (New Die)
- MPS-8X1 1/2 - FASTENERS (QTY. 2)

**CAN ONLY BE USED WITH C600**



**T-MULL**

- M23980 - T-MULL
- M26058 - BASE (New Die)
- M536207 - CAP
- M13404 - L-ANGLE (QTY. 2)
- BPN-9159 - W.S. (QTY. 4)
- MH1/4 20X3/4 - BOLTS (18" APROX. O.C.)
- M13404 - L-ANGLE (QTY. 2)
- MF8-15X7/8-8HD - FASTENERS (QTY. 2)
- MF8-15X1 1/2 - FASTENERS (QTY. 2)

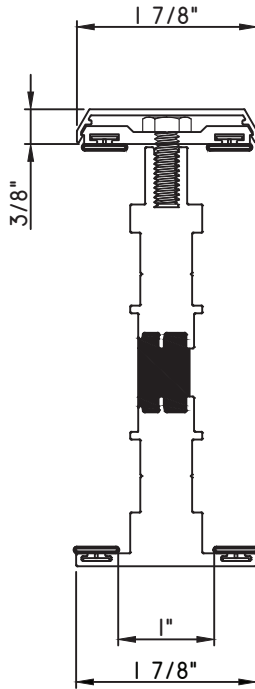
Our products are tested to the standards of and certified by some of the foremost organizations in the fenestration industry.





# C600/C605 Series Casement, Project-Out, Fixed Vertical Mulls

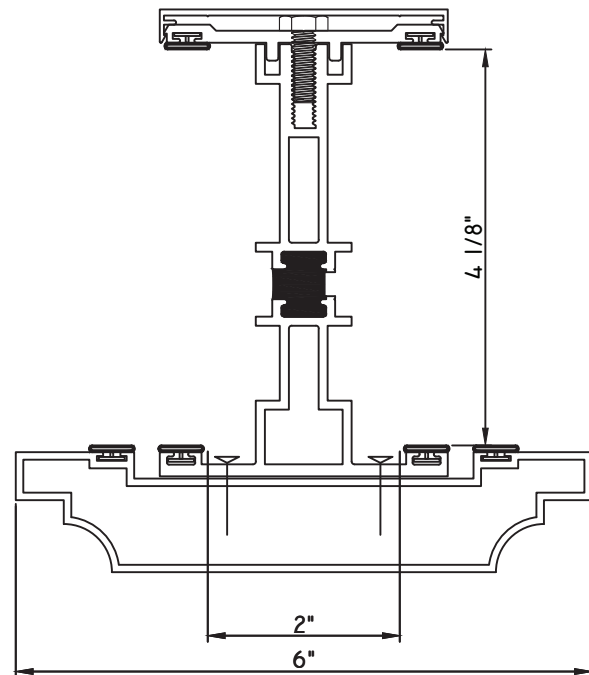
All information seen within this document are considered current. However periodic changes/updates to our products are necessary. Quaker Window Products Inc. reserves the right to change any information without notice.



## T-MULL

- M24502 - T-MULL
- M23056 - BASE
- M23058 - CAP
- M13404 - L-ANGLE (QTY. 2)
- BPN-9159 - W.S. (QTY. 4)
- MH1/4 20X3/4 - BOLTS (18" APROX. O.C.)
- 5228 - ANCHOR (QTY. 2) (NAIL FIN)
- M18231 PCS - ANCHOR (QTY. 2) (RECEPTOR)
- MPS-8X1 1/2 - FASTENERS (QTY. 2)

**CAN ONLY BE USED WITH C600**



## HEAVY WALL T-MULL

- M24895 - T-MULL
- M21043 - BASE
- M21044 - CAP
- BPN-9159 - W.S. (QTY. 4)
- MH1/4 20X3/4 - BOLTS (3" FROM EACH END & 16"O.C.)
- M13404 - L-ANGLE (QTY. 2)
- MF8-15X7/8-8HD - FASTENERS (QTY. 2)
- MF8-15X1 1/2 - FASTENERS (QTY. 2)
- OUTSIDE COVER - M24894 (FIELD APPLIED)
- MH8-18X3/4 TK2 - FASTENERS (3" FROM EACH END & 16"O.C.) x2

M24895 I VALUE = 4.0072

SCALE 1:2

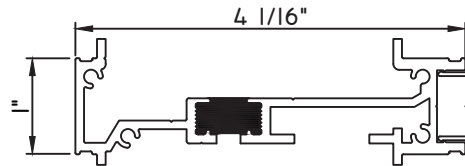
Our products are tested to the standards of and certified by some of the foremost organizations in the fenestration industry.





# C600/C605 Series Casement, Project-Out, Fixed Horizontal Mulls

All information seen within this document are considered current. However periodic changes/updates to our products are necessary. Quaker Window Products Inc. reserves the right to change any information without notice.



## 1" STACK MULL

M23841 - STACK MULL

M23842 - INTERIOR COVER

1226-604 - WEEP COVER

QWP-M23844 - END DAM (QTY. 2)

MH8-18X1 LP - SCREW (QTY. 8)

### C600 Install ONLY

SCALE 1:2

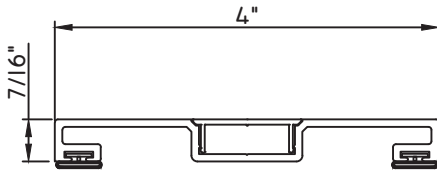
Our products are tested to the standards of and certified by some of the foremost organizations in the fenestration industry.



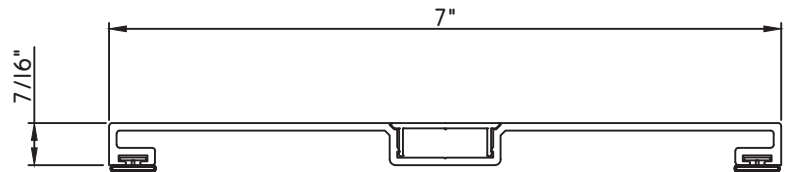


# C600/C605 Series Casement, Project-Out, Fixed Mull Covers

All information seen within this document are considered current. However periodic changes/updates to our products are necessary. Quaker Window Products Inc. reserves the right to change any information without notice.



**4" MULL COVER**  
M536208 - MULL COVER  
M536207 - CAP  
BPN-9159 - W.S. (QTY. 2)



**7" MULL COVER**  
M12794 - MULL COVER  
M536207 - CAP  
BPN-9159 - W.S. (QTY. 2)

SCALE 1:2

Our products are tested to the standards of and certified by some of the foremost organizations in the fenestration industry.

