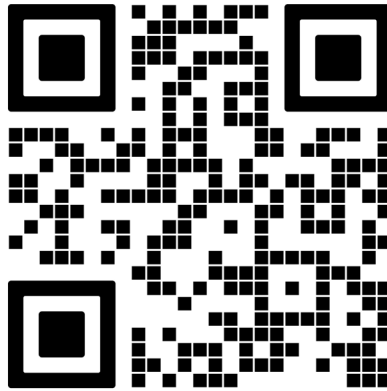


M600 Outswing Door with Low Profile Sill and Sidelite (T-Mullion) Installation Guide



-Scan here for a digital version-

Part # IG-128 - V.1.1 4/10/2026

Pages 5 to 6 -- Rough Opening Instructions

Pages 7 to 13 -- Frame Installation Instructions

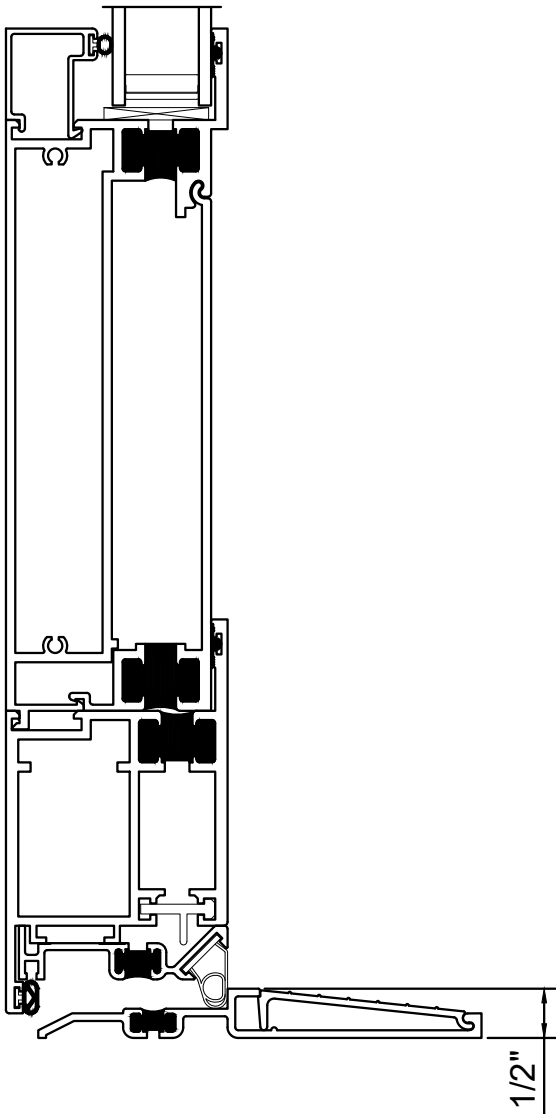
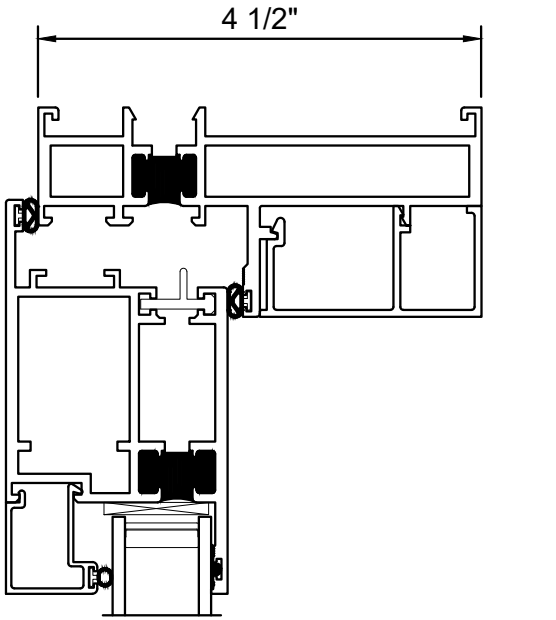
Pages 14 to 16 -- Sealant Instructions

Pages 17 to 18 -- Door Installation and Hinge Adjustment Instructions

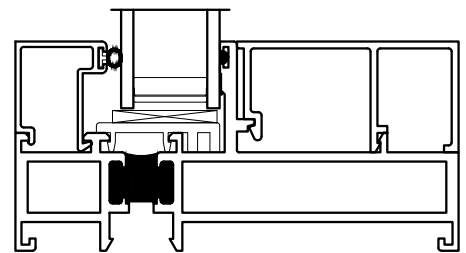
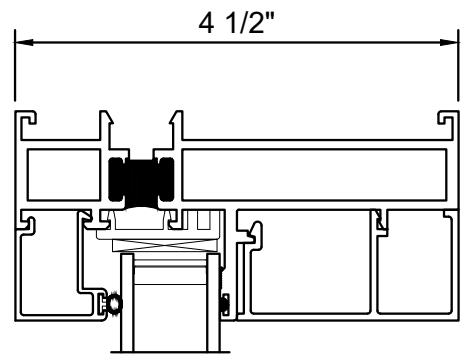
If this set of instructions does not match your installation method or the wall conditions of the job site, please check our website listed below for other options, or call Quaker Customer Service for additional information.



Quaker Window Products
504 Highway 63 S
Freeburg, MO 65035
Phone: 800-347-0438
Fax: 573-469-4151
www.quakerwindows.com



Outswing Door



Sidelite

Tools Required by Installer

Safety Glasses



Drill/Driver



Level



Caulk Gun



Utility Knife



Metal Cutting Saw



Tape Measure



Staple Gun



Rubber Mallet



J-Roller



Materials Required by Installer

Foam Backer Rod



Plastic Shims



Self-Adhering Flashing Tape



Perimeter Fasteners



Sealant



Denatured Rubbing Alcohol



-Carefully read these instructions before starting any installation-

These are generic instructions that cover common situations and applications, which may not be appropriate for all installations due to building design, site conditions, construction materials, or installation methods used. Consult Quaker for recommendations for specific applications not covered in these installation instructions.

Failure to install and maintain QUAKER® products according to these instructions may void any product warranty. Please visit the Quaker website at www.quakerwindows.com, or call 800-347-0438 for additional information.

Tools

- Follow manufacturer's instructions and safely operate tools, ladders, or scaffolding. Always wear safety glasses. Failure to do so could result in injury, product, or property damage.

Handling

- Do not store QUAKER products outside or in an unprotected, high moisture, or high heat environment prior to installation. Doing so could result in product damage.
- Do not carry, transport, or store QUAKER products in a flat (horizontal) position. Doing so could result in product damage or injury.
- Window and door units should be kept or stored in an upright (vertical) position, with support across the sill to avoid bowing. Do not lay any units in a flat position!

Glass

- If glass gets broken, please exercise caution, as glass fragments can cause lacerations or other injuries. In many areas, local building codes require safety glass to be used in certain applications. All QUAKER products are available with safety glass if they are ordered that way.

Fastening

- Metal fasteners and components could corrode when used in contact with preservative-treated lumber. Use approved and appropriate fasteners and components to fasten QUAKER products in this application. Failure to do so could result in a product performance failure, injury, or property damage.
- Quaker does not provide anchorage or fastener calculations.
- Quaker is not responsible for determining structural adequacy of the anchorage and fasteners used to install QUAKER products, or the openings into which they are installed.

Installation

- Report any damage to dealer immediately. Do not install product if damaged. Quaker is not responsible for addressing products that are damaged after delivery, or product that is installed in a damaged condition.
- Always support window or door products in an opening until fully fastened. Failure to do so could result in the product falling out of an opening and causing injury, product, or property damage.
- Nailing flanges and drip caps (integral or applied) do not take the place of window flashing. All QUAKER products must be properly flashed and sealed with material compatible sealant for protection against water and air infiltration around the entire exterior perimeter. Failure to do so could result in a product installation failure and property damage.
- Windows and doors must be properly shimmed. To properly shim a QUAKER product, follow relevant installation guidelines, and never set a window directly on a sill plate. Failure to shim properly is an installation failure that could result in product performance failure or property damage.
- Construction directly above an opening must be engineered and designed not to transfer loads directly to any windows or doors. If live or dead loads are transferred to a QUAKER product, this may affect functionality and result in glass failure or otherwise damage frame joinery, perimeter seals, or other aspects of the product. Proper construction of the rough opening must take place prior to the installation of the QUAKER product.
- Please confirm that any necessary vertical deflection of the head condition is consistent with the selected QUAKER product. Most QUAKER products are not designed to allow any deflection at the head condition. Shop drawings may indicate the maximum allowable vertical deflection at the head condition of a QUAKER product. If vertical deflection is a concern but shop drawings are not provided, please contact Quaker for assistance.
- Windows and doors have small parts that, if swallowed, could pose a choking hazard to young children. Please dispose of unused, loose, or easily removed small parts. Failure to do so could result in injury or death.
- Do not drill through or into the sill or frame of any QUAKER products, whether to install alarm wires or for any other reason.

Sealing

- Follow supplier instructions for proper application of minimally expanding foam, sealant, water resistant barrier or liquid barrier, and flashing products and systems to ensure safety, proper material application, compatibility, and to understand the need for periodic maintenance for continued weather resistance of their products. Failure to do so could result in product performance failure or property damage.
- Minimally expanding foam insulation must be compliant with AAMA 812.
- If silicone is selected as an appropriate sealant, Quaker recommends using 100% neutral cure silicone sealant, that is ASTM C920 compliant. Always clean and prepare the surfaces where the sealant will be applied per the manufacturer's recommendation. Once applied, properly tool the sealant in place. Failure to do so could result in product performance failure or property damage.
- Flashing tape must meet ASTM-D779 performance requirements.
- Maintain and properly seal a minimum of 1/4" gap (or whatever is specified within these installation instructions or shop drawings) around the perimeter of the window or door frame and the exterior finish materials. Failure to do so could result in product installation failure or property damage.

Joining

- Do not join any Quaker product to another product that is not designed for joining. Joined products must be individually supported in the opening. Failure to do so could affect operation and product performance and could result in a product installation failure or property damage.

Cleaning

- Do not use any cleaning agent other than a mild, non-abrasive window washing solution or glass cleaner applied in accordance with any product labeling instructions and Quaker's care and maintenance instructions. The use of harsh chemicals (such as brickwash, bleach, alcohol, hydrochloric acid, or muriatic acid) for cleaning or other purposes may damage QUAKER products, glass, fasteners, hardware, seals, sealant, or metal flashing. Please protect these products by following the cleaning product's instructions for its proper use.
- Do not use a razor blade to clean a glass surface, as damage to the glass may result.

IMPORTANT

- Buildings constructed prior to 1978 may contain lead paint which could be disturbed during window or door replacement. For more information on proper management of lead paint, go to: www.epa.gov/lead
- Care must be taken to properly recycle or dispose of used or old materials. Any recyclable material should be separated from non-recyclable or hazardous materials. Please consult with local or state authorities regarding proper disposal of non-recyclable or hazardous materials.
- Inspect all window and door units for any damage or defects prior to installation. Contact the nearest QUAKER distributor if there are any problems or issues.
- **WARNING:** This product can expose you to chemicals, including titanium dioxide or methanol, which are known to the State of California to cause cancer and birth defects or other reproductive harm. For more information go to www.P65Warnings.ca.gov
- **WARNING:** Drilling, sawing, sanding, or machining wood products can expose you to wood dust, a substance known to the State of California to cause cancer. Avoid inhaling wood dust or use a dust mask or other safeguards for your personal protection. For more information go to www.P65Warnings.ca.gov
- When installation is completed, operable window and door products, and related hardware or equipment, may require some adjustments. Confirming operability and making minor adjustments are within the scope of the installation services performed by others.

NOTE:

For easier installation, remove the door from the frame. Open the door 90° and lift it off the hinges. Place the door in a safe area where it can not be damaged. See page 29 for hinge adjustment instructions.

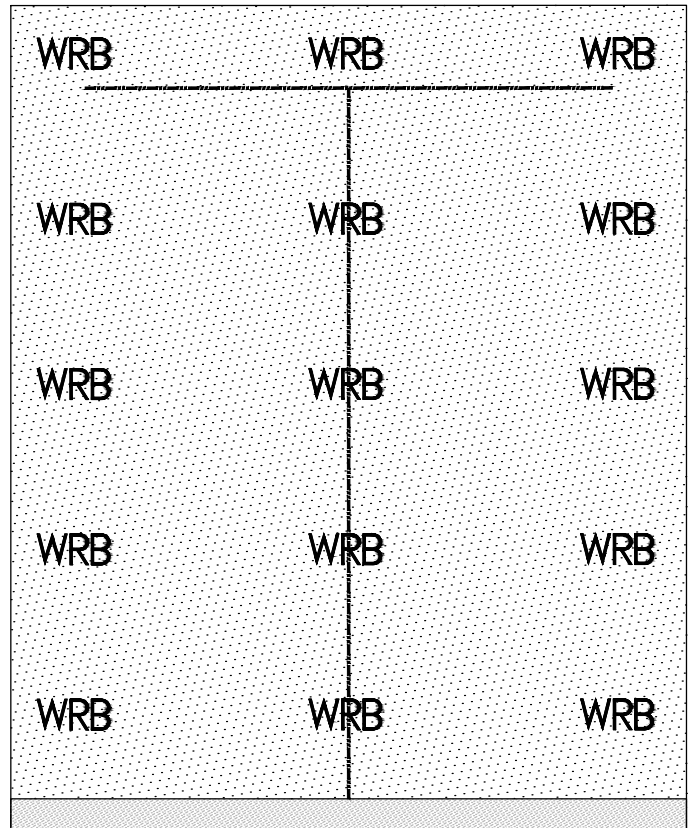
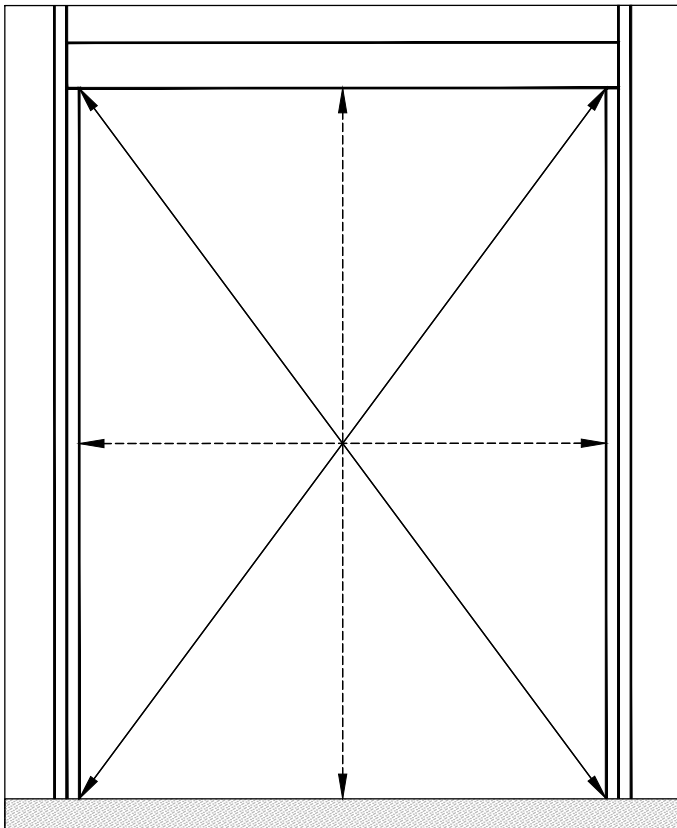
RO1

From the interior, measure and verify the size of the rough opening. The rough opening should be a minimum 3/4" wider for the entire Unit Width, and 1/2" taller than the Door Unit and 3/4" taller than the Sidelite Unit, unless otherwise specified on the shop drawings. Verify the rough opening is flat, plumb, level, and square.

Take diagonal measurements to check for square.

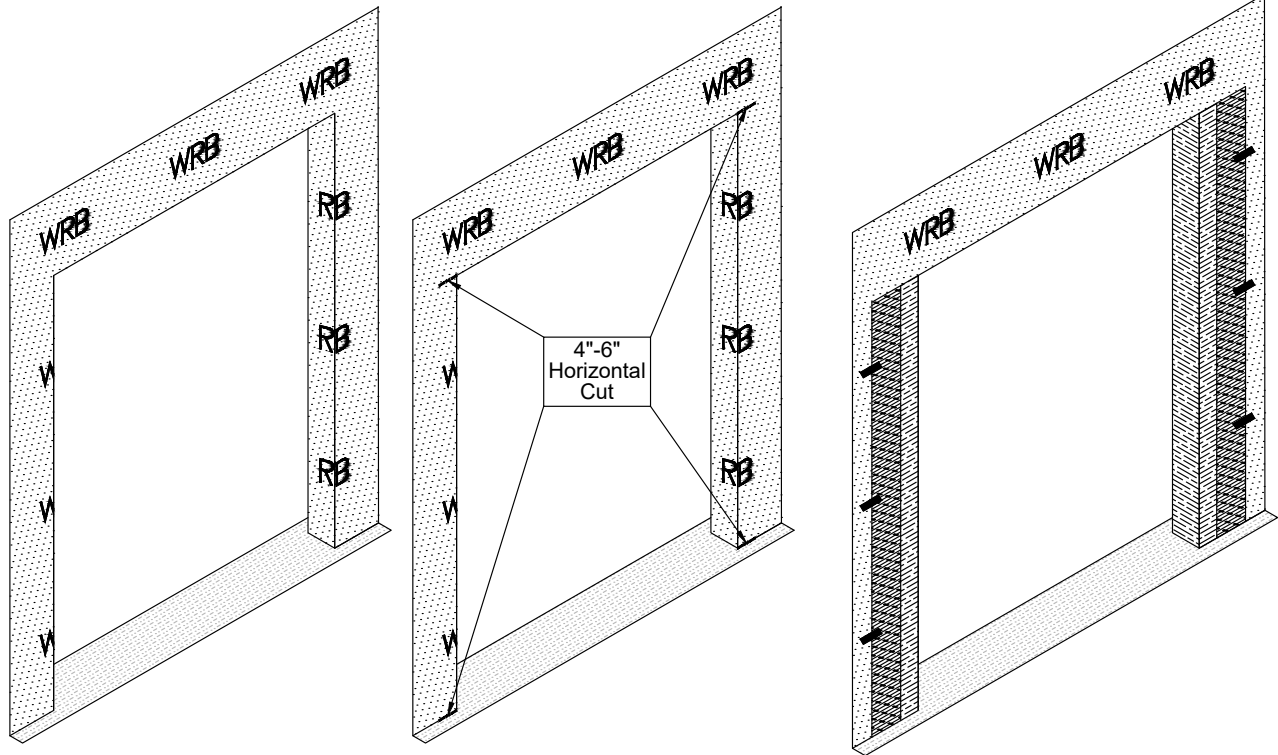
The sill structure beneath the unit must be level for proper unit operation.

Go to the exterior and cut the Weather-Resistant Barrier (WRB) in an 'I' pattern.



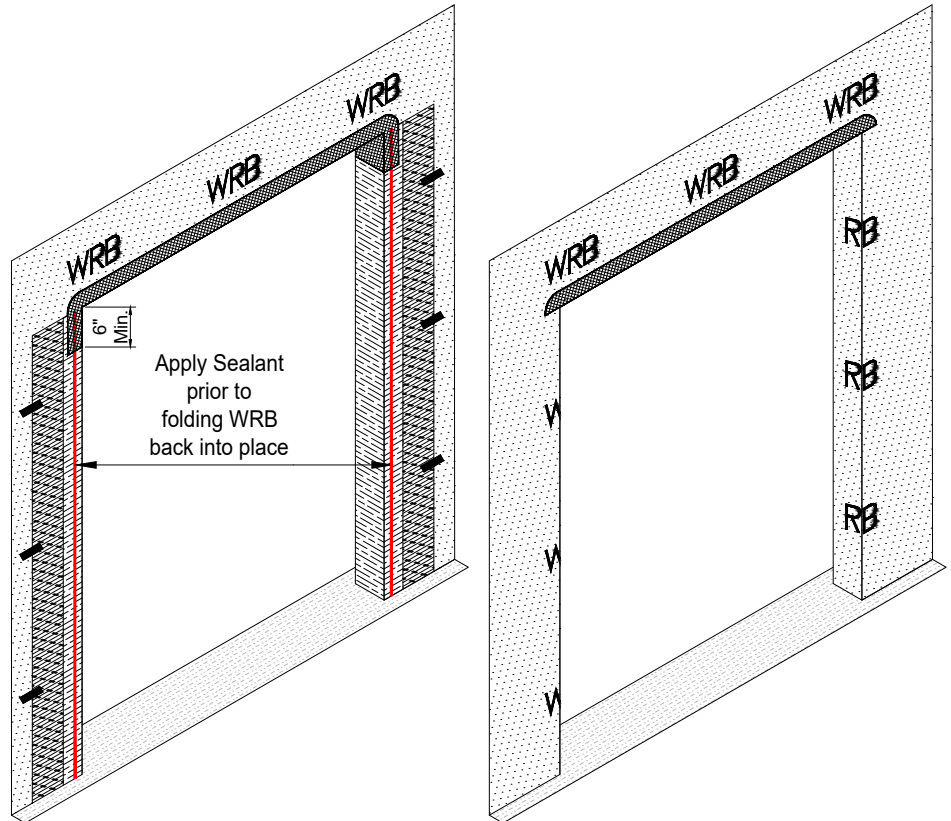
RO2

Fold the WRB sides towards the interior and trim as needed. Do not staple in place. Make 4"-6" horizontal cuts in the WRB at the head and sill jambs. Fold back WRB at the cut lines, and tape into place.



RO3

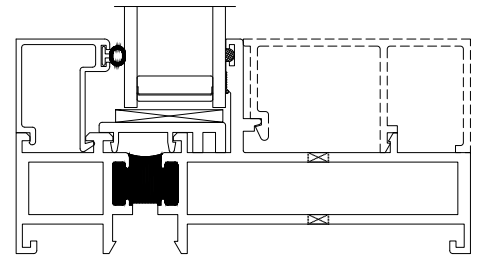
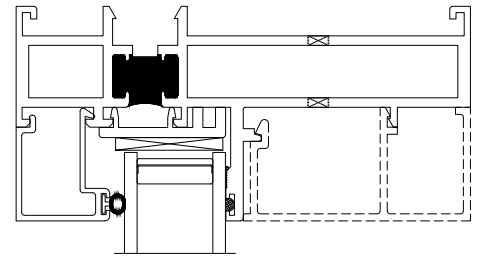
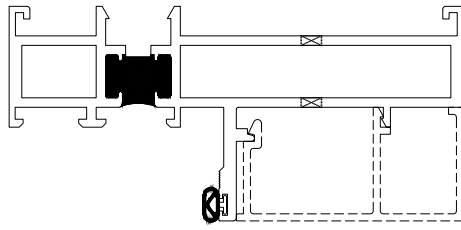
Measure the width of the rough opening and cut one (1) length of self-adhering flashing that is 12", or more, than the width of the rough opening. This will allow the flashing to run 6"+ down each jamb condition. Apply the flashing to the exterior head side first, allowing for a minimum of 3" above the head and down each side. The flashing tape must cover the entire head member. If needed, apply an additional piece of flashing over the first one with a 1" minimum over-lap. Start from the exterior and work towards the interior. After applying the head flashing, apply sealant at the jambs where shown. Fold the WRB jamb flaps back into place, over the sill flashing, and fix into place. Leave head flap in place.



Door and Sidelite Frame Installation

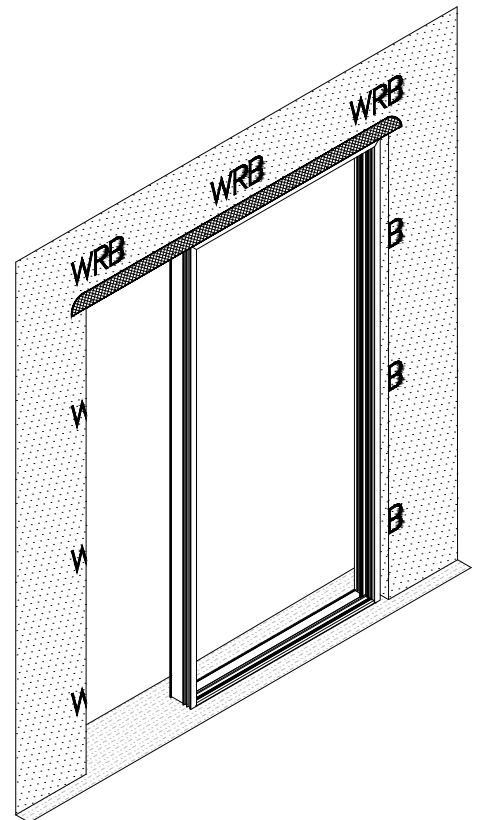
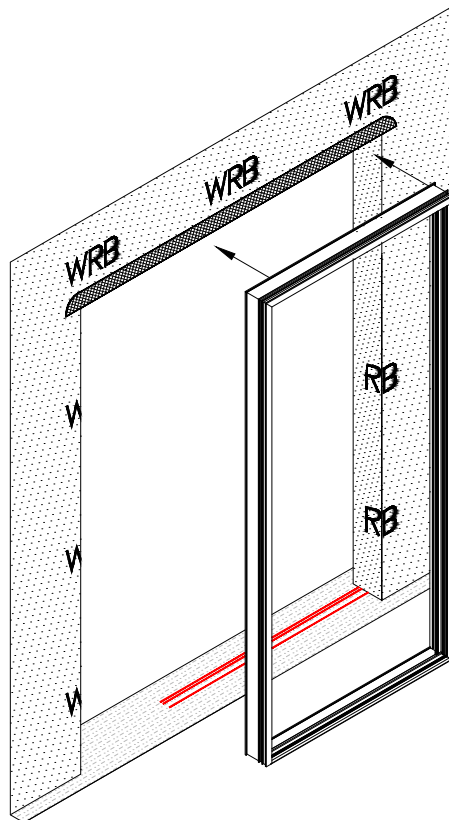
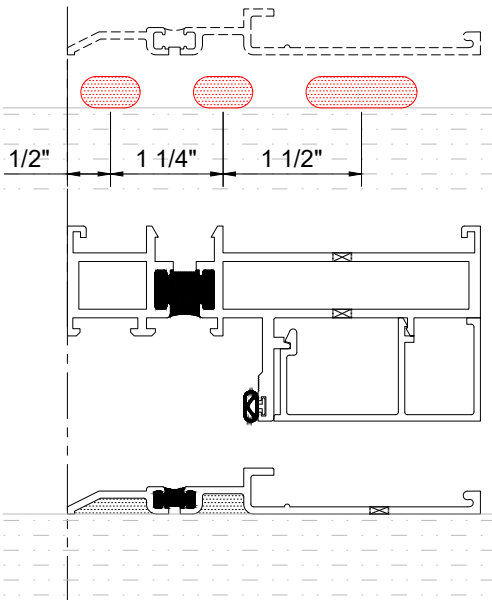
FI1

If not shipped loose, remove the Door and Sidelite frame interior trim stops. Drill holes for the perimeter fastener per the locations shown on the Shop Drawings or the anchorage calculations. Take care to not damage the glass/infill.



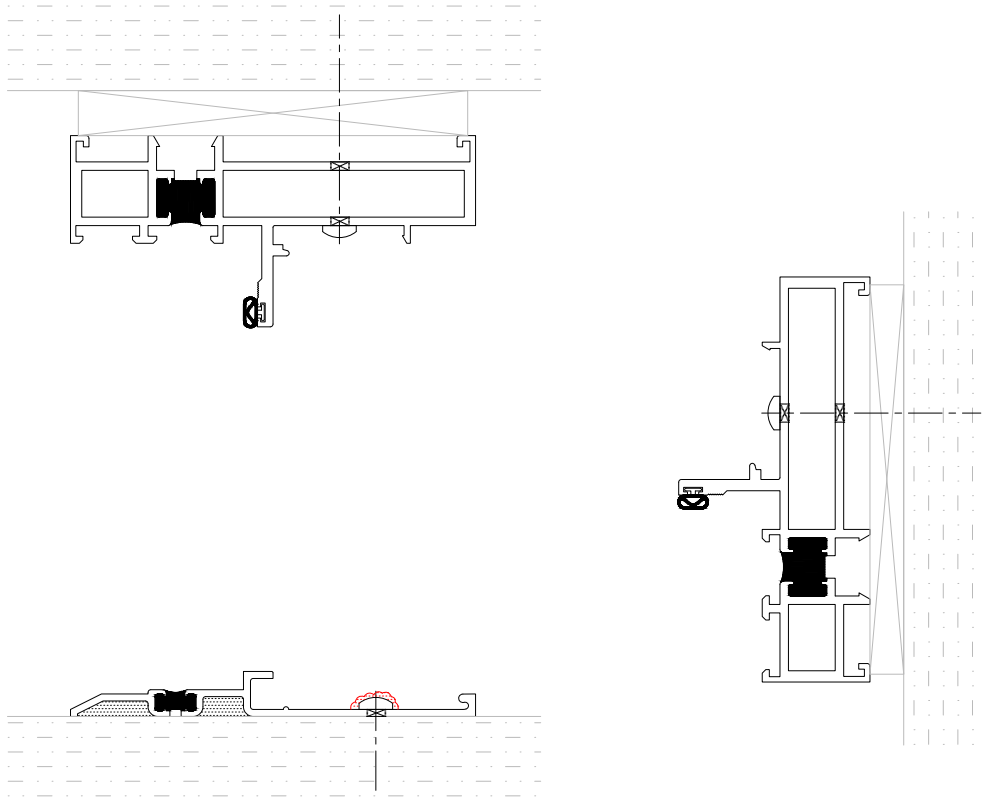
FI2

Before inserting the Door Frame assembly into the opening, determine where the face of the frame will be located in the opening. Then run three (3) beads of silicone sealant where shown below. The sealant should run the width of the door frame unit. Install the frame assembly by lifting it into the rough opening from the exterior side. Add plastic shims as needed at the perimeter head and jamb fastener locations. Make sure the frame is level and square before installing the perimeter fasteners.



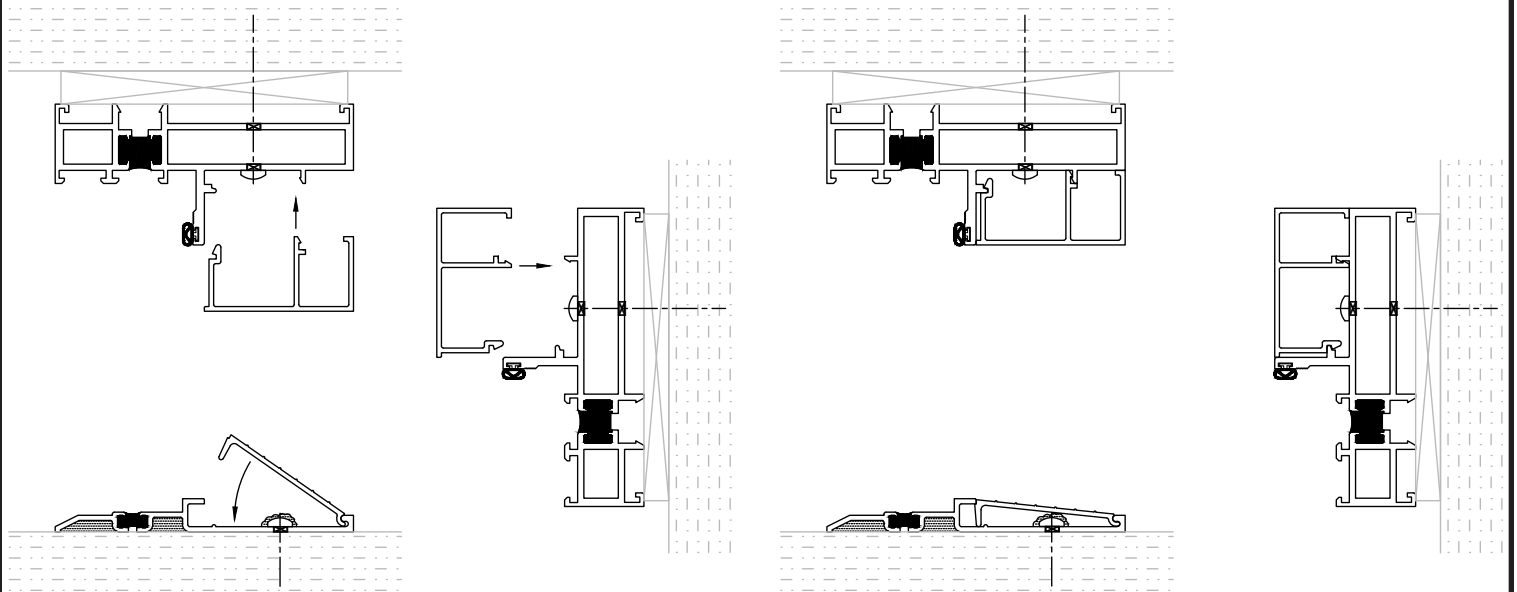
FI3

Match drill the the perimeter fastener holes into the building structure. Fill these holes with silicone sealant.
Attach the Door Frame. Do not over-tighten the fasteners.
Seal over fastener heads at the sill and tool as needed.



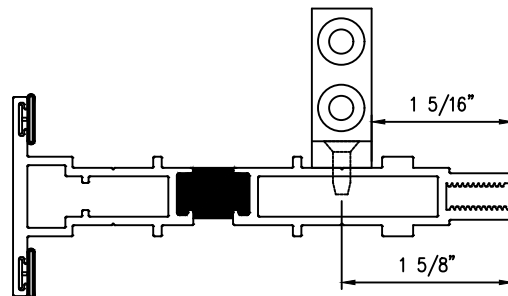
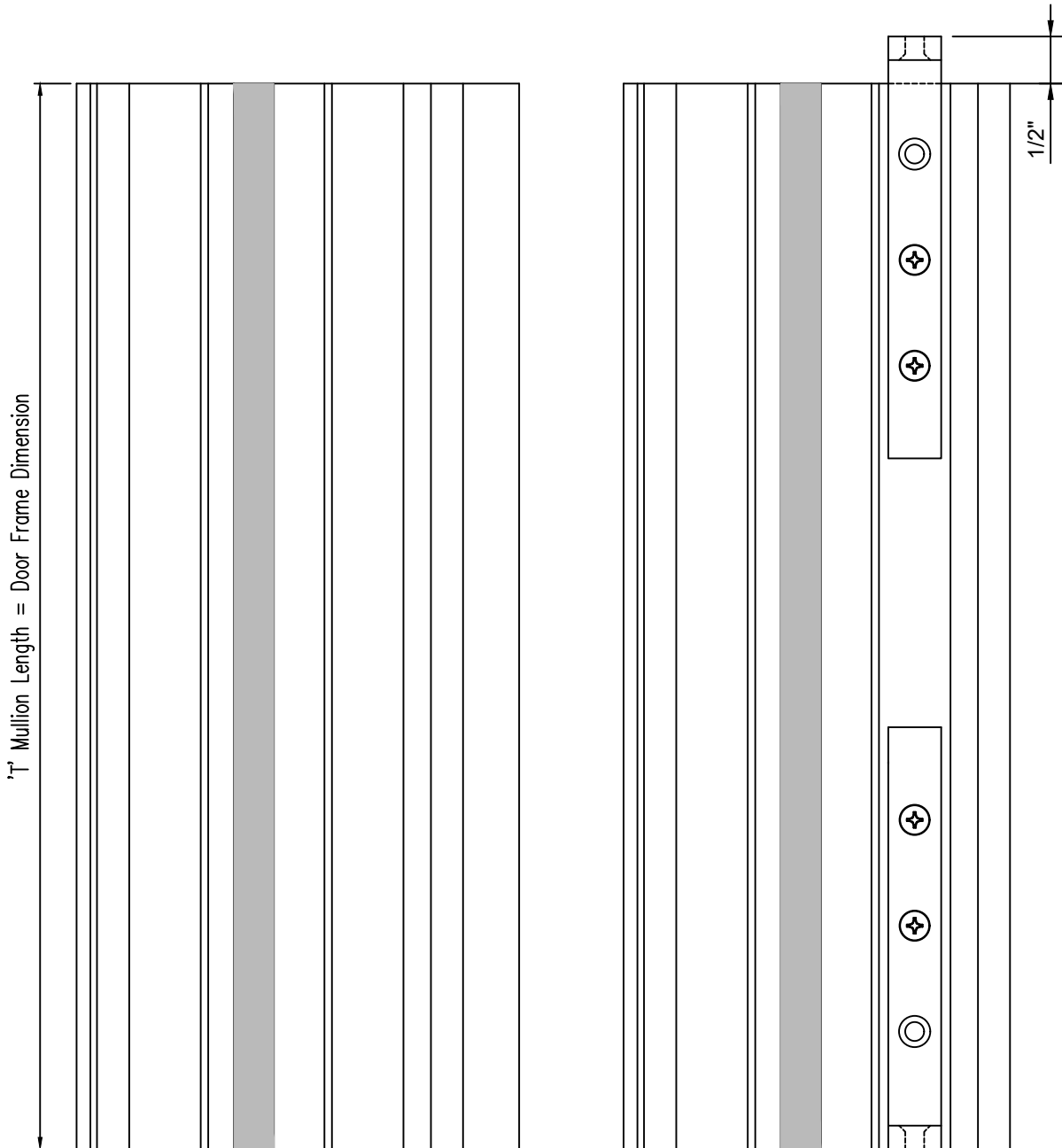
FI4

When all fasteners are in place, re-install the interior Head and Jamb trim covers and the threshold cover.



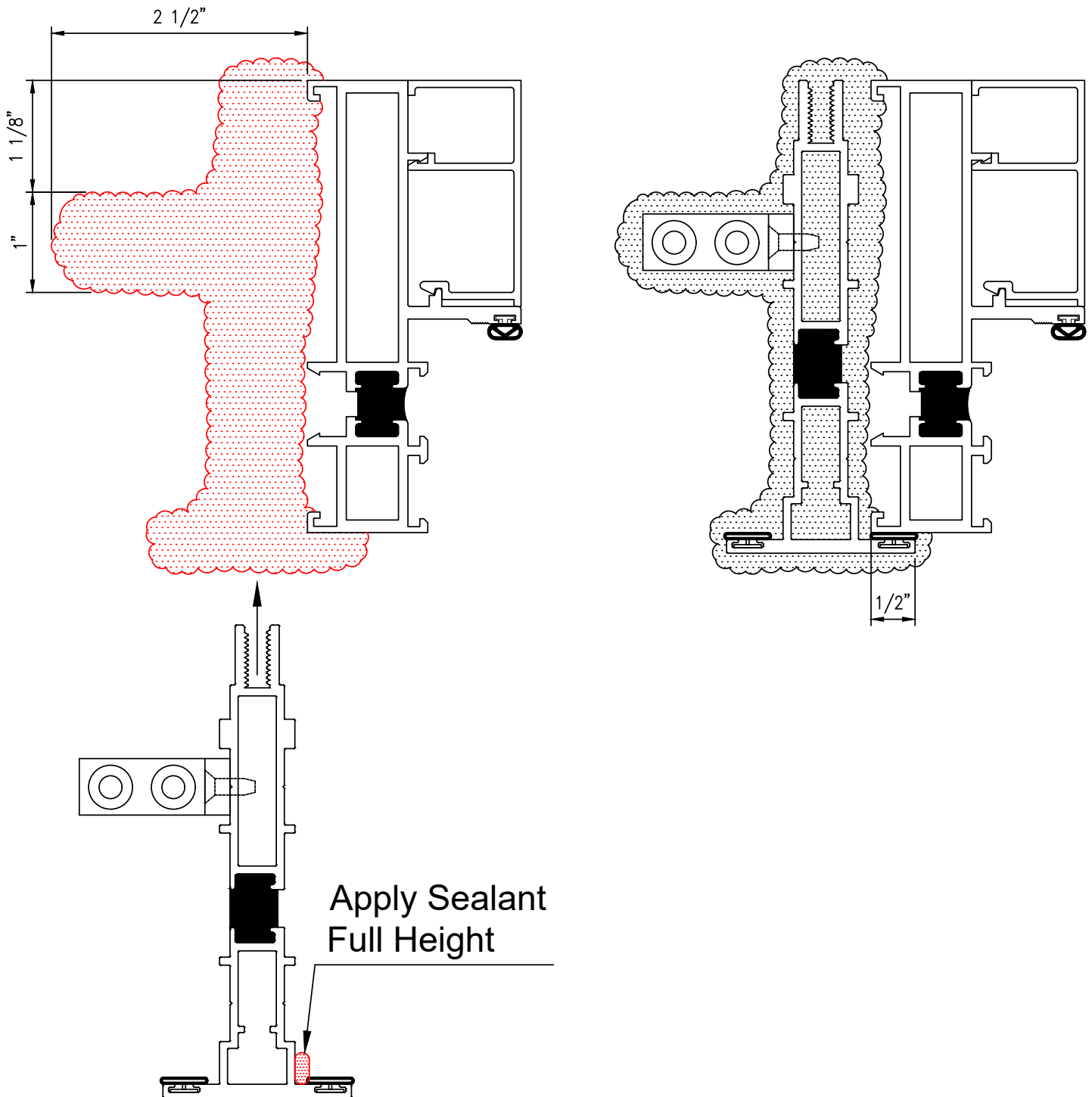
FI5

If not already done, cut the 'T' Mullion, interior Cover, and Pressure Plate to size.
The 'T' Mullion, Pressure Plate, and interior Cover will be equal to the door frame height.
Position the Angle Clips where shown below and match drill the 'T' Mullion with a #27 Drill Bit (0.141 Dia.).
Attach the Angle Clips with the supplied #8 Fasteners.



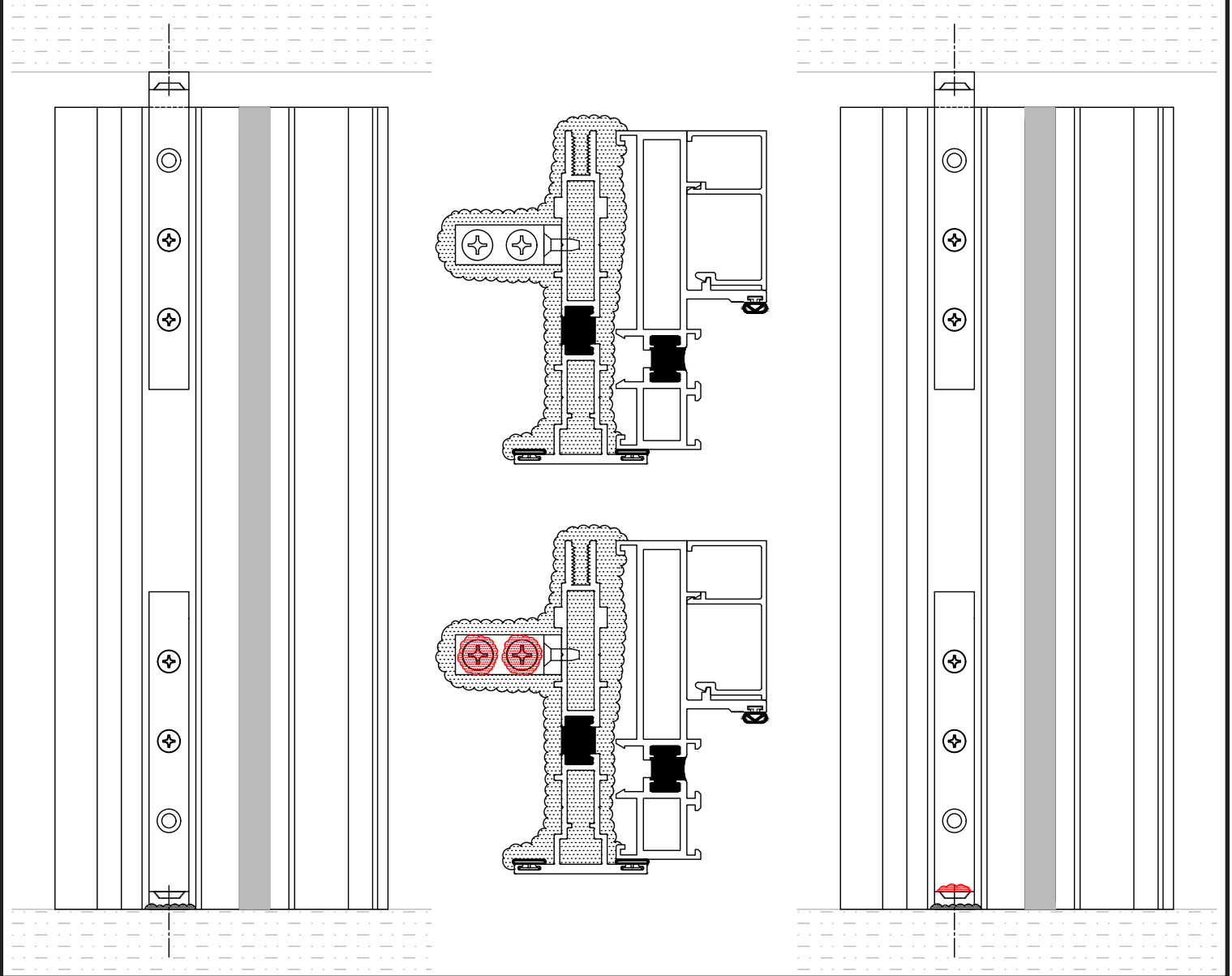
FI6

Apply a generous amount of sealant to the building structure where the Angle Clip and 'T' Mullion will sit (see dimensions below), and on the exterior leg of the 'T' Mullion as shown below. Then install the 'T' Mullion assembly against the door frame by sliding it into place from the exterior. Push firmly against the door frame as shown. Tool sealant as needed.



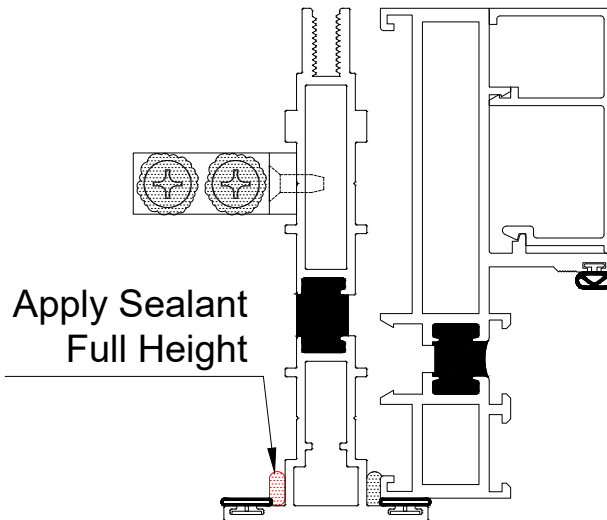
FI7

When positioned correctly, fasten the Angle Clips in place. Securely seal the fastener heads at the sill Angle Clip and tool as needed. Sealing around the head Angle Clip and fasteners is optional.



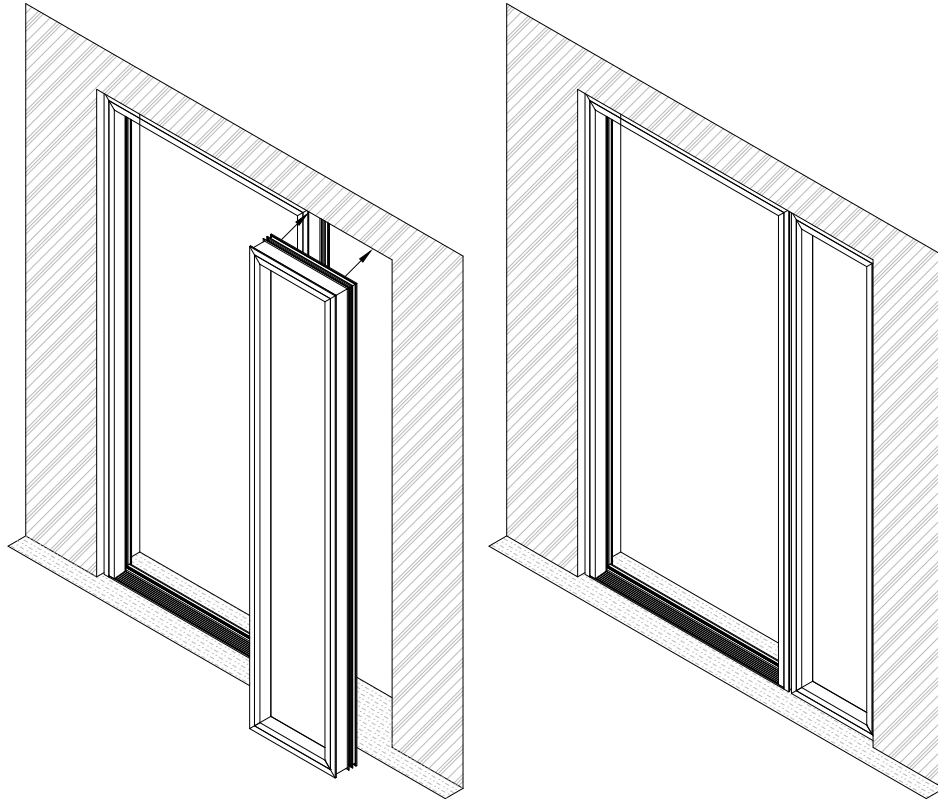
FI8

Before inserting the Sidelite Frame assembly into the exterior leg of the 'T' Mullion as shown below.



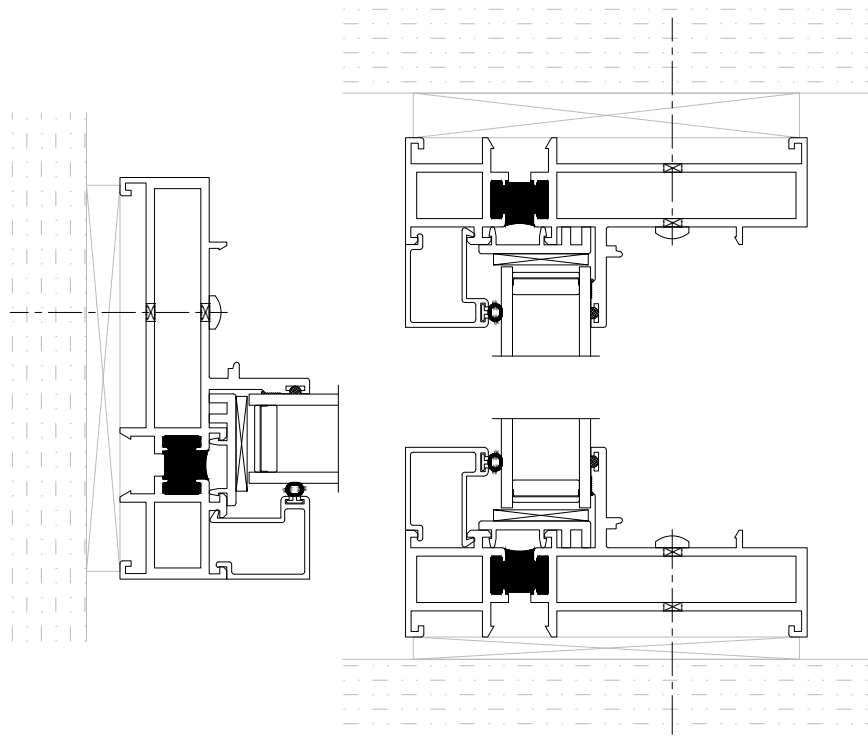
FI9

Install the Sidelite Frame assembly from the interior pushing it into place. It may require angling it into the opening over and around the 'T' Mullion Clip. Do not sit the frame directly on the building structure. Use plastic shims at the fastener locations.



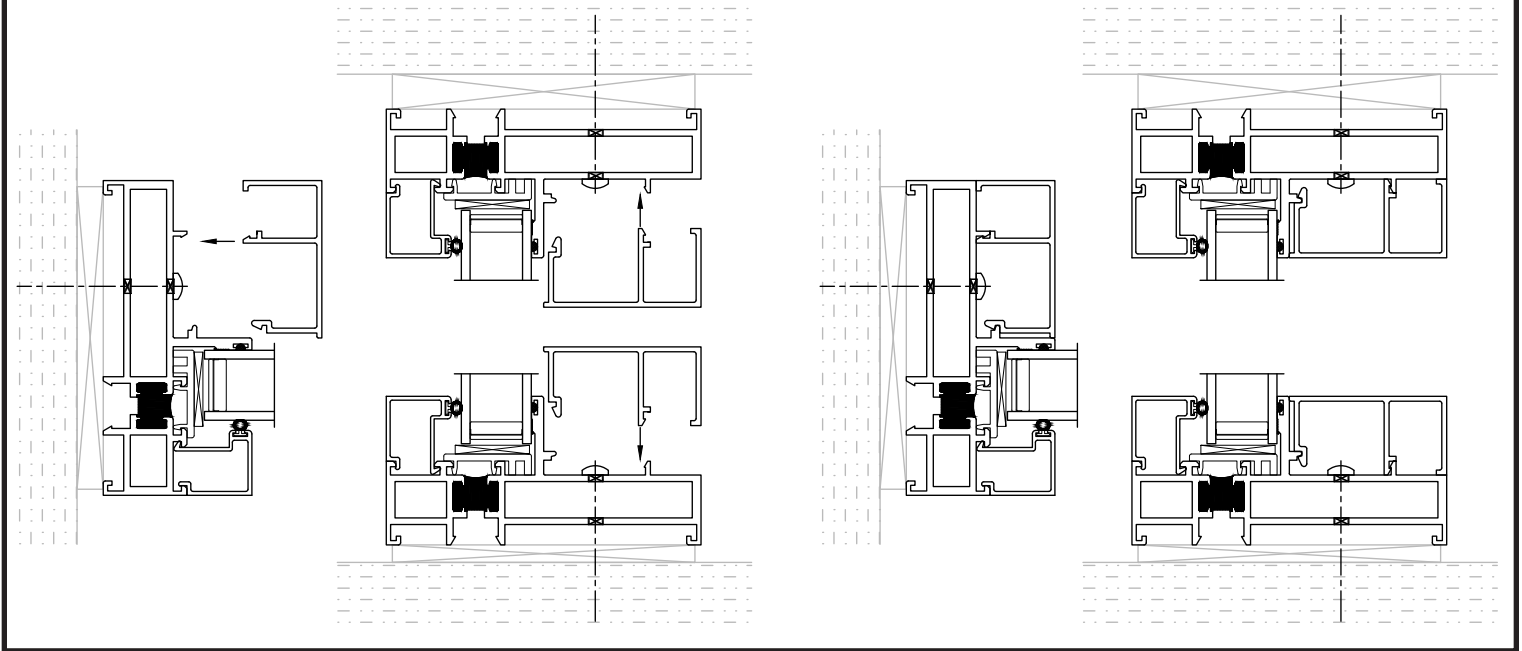
FI10

Match drill the the perimeter fastener holes into the building structure. Fill these holes with silicone sealant, and attach the Sidelite Frame. Do not over-tighten the fasteners.



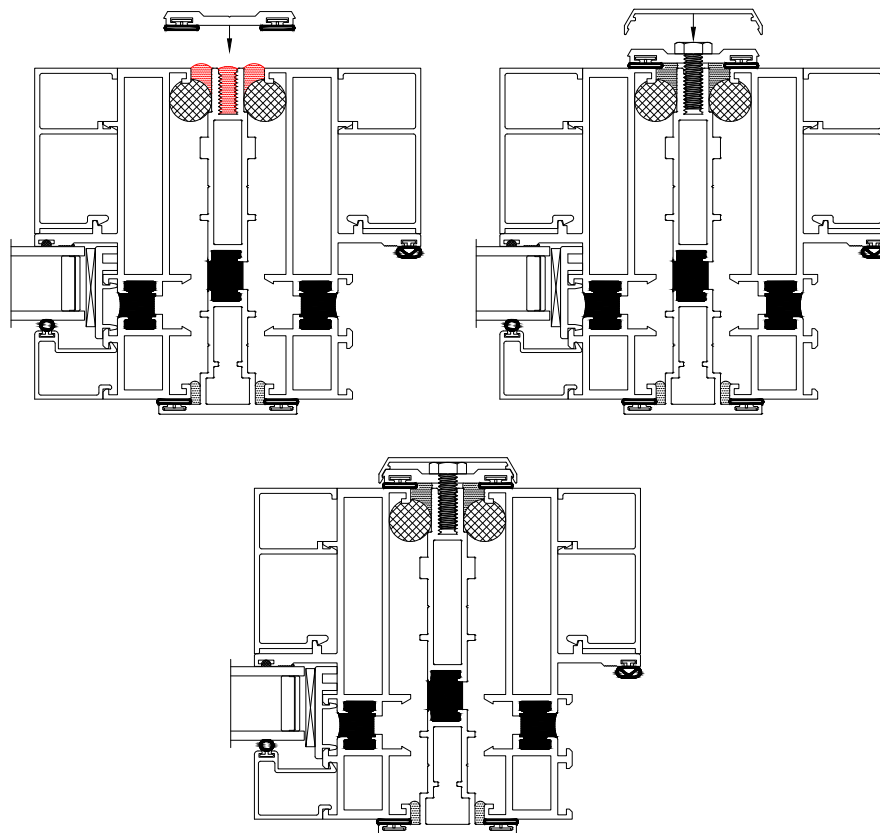
FI11

When all fasteners are in place, re-install the interior Head and Jamb trim covers and the threshold cover.



FI12

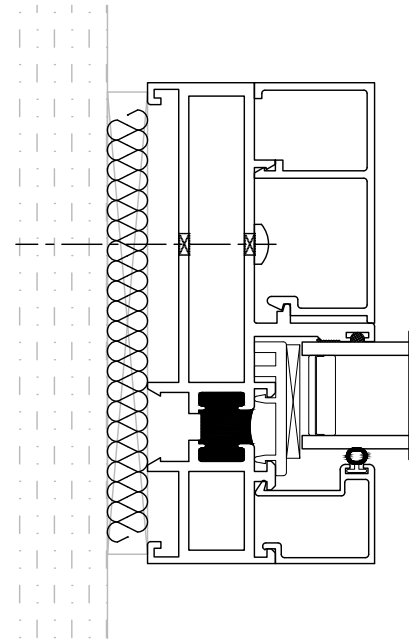
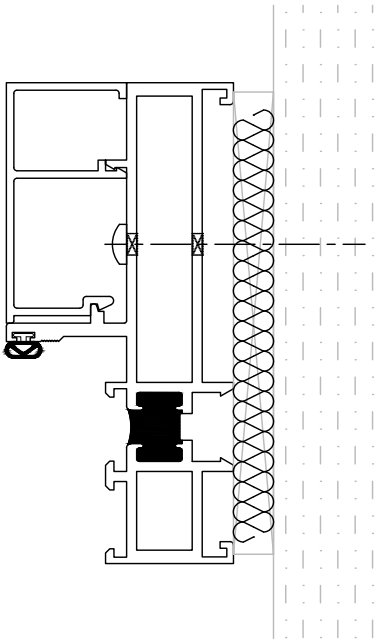
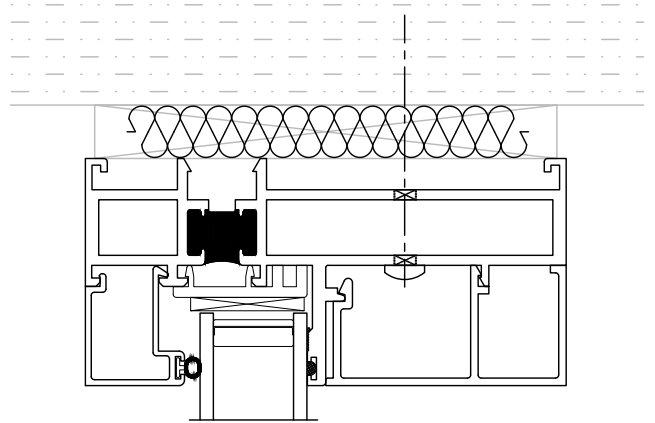
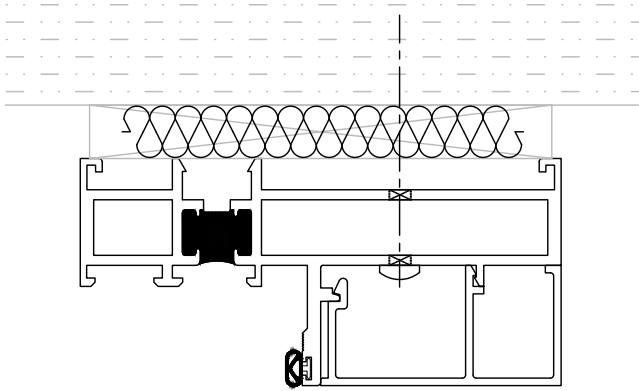
Fill the voids between the T-Mullion and the Window Frames with backer rod and apply sealant full height at the window to T-Mullion area, and 6" from the top and bottom at the T-Mullion raceway as shown below. Apply the Pressure Plate with the supplied fasteners, 3" from the ends and 12" O.C. Make sure the fasteners are installed straight, and do not over-tighten the fasteners to ensure a uniform seal of the weathering to the mullions. After the Pressure Plates are in place, snap the on cover.



Sealing Instructions

SI1

Insert insulation into the gap at the head and jambs as shown below.



SI2

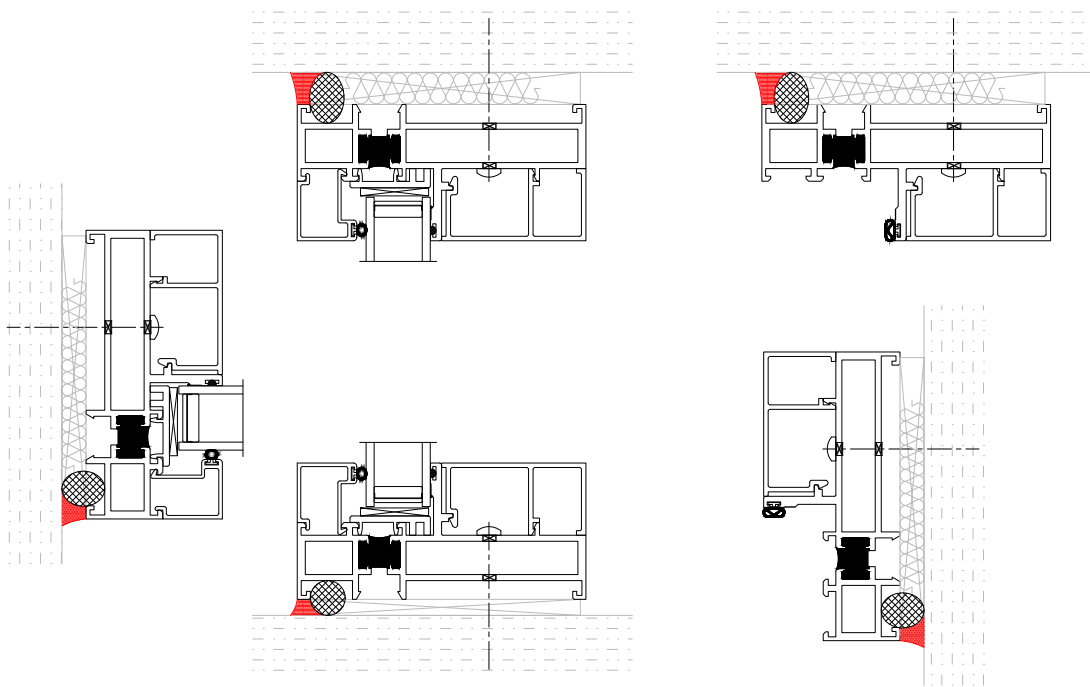
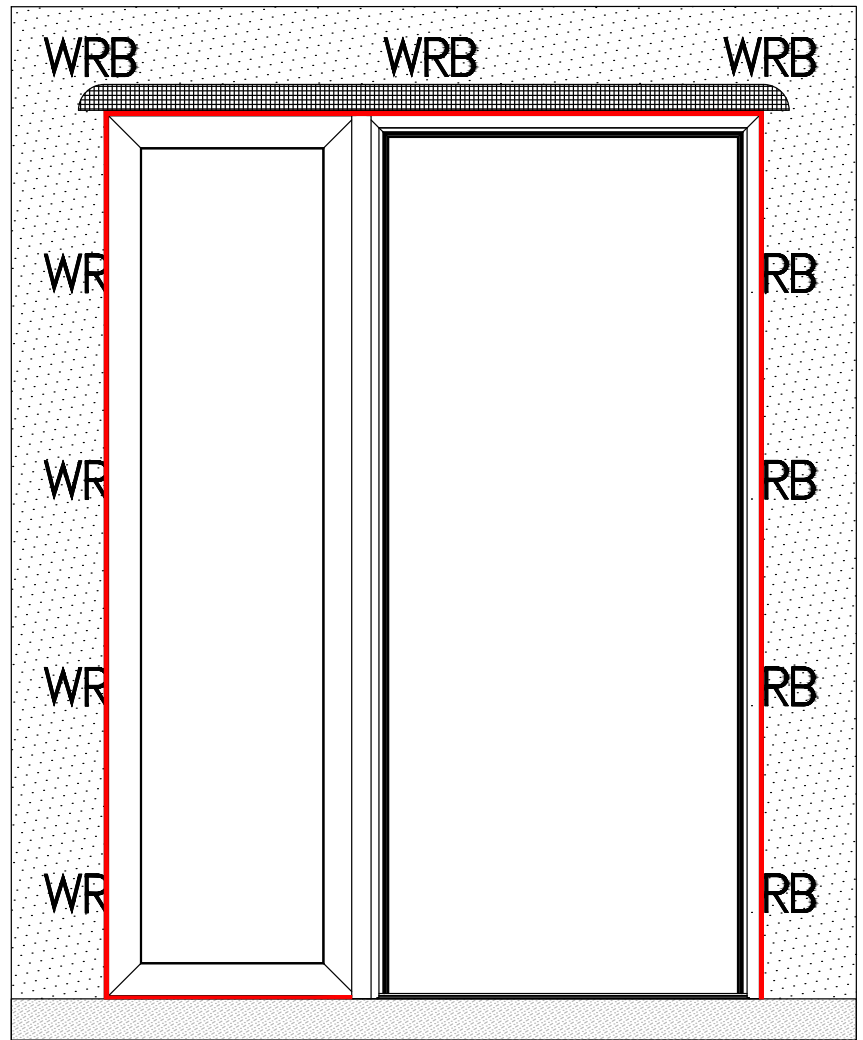
Refer to the Shop Drawings if additional flashing or other material is required.
After exterior building construction is completed, install back rod, then apply a continuous bead of sealant around entire perimeter of window frame and tool in place.

Note:

Installer to verify that Sealant being used is compatible with Quaker window/door frame and the surrounding building construction materials.

Note:

Please inform the exterior facade installer that they must maintain a minimum 1/4" gap between the facade material and the Window Unit, and that the facade material should never come in contact with the Window Unit.

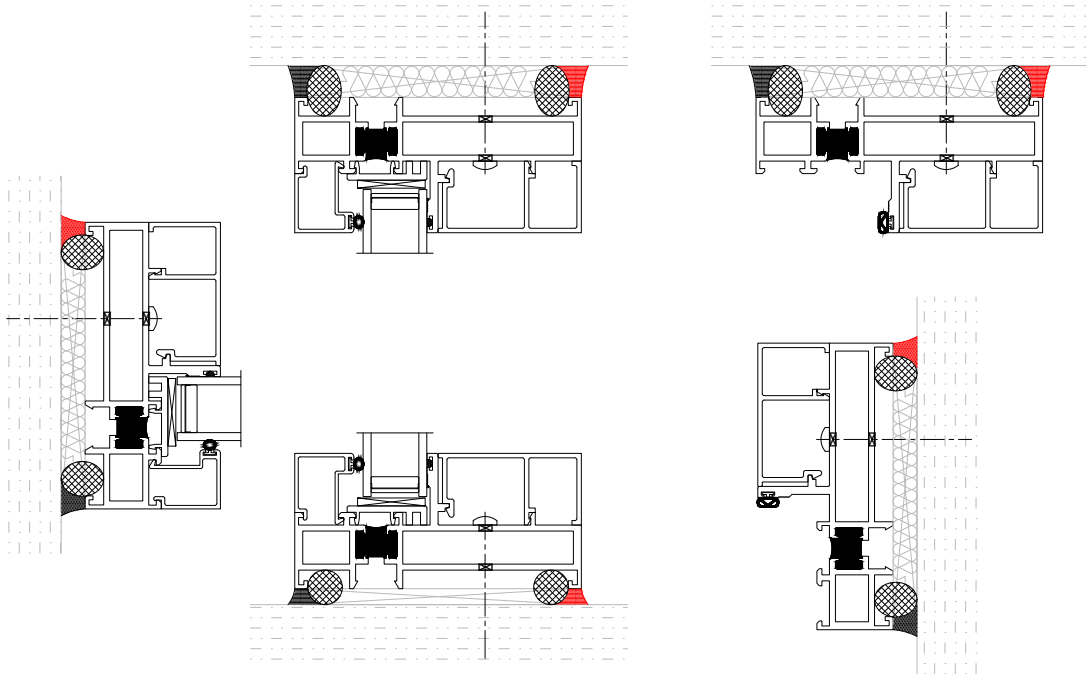
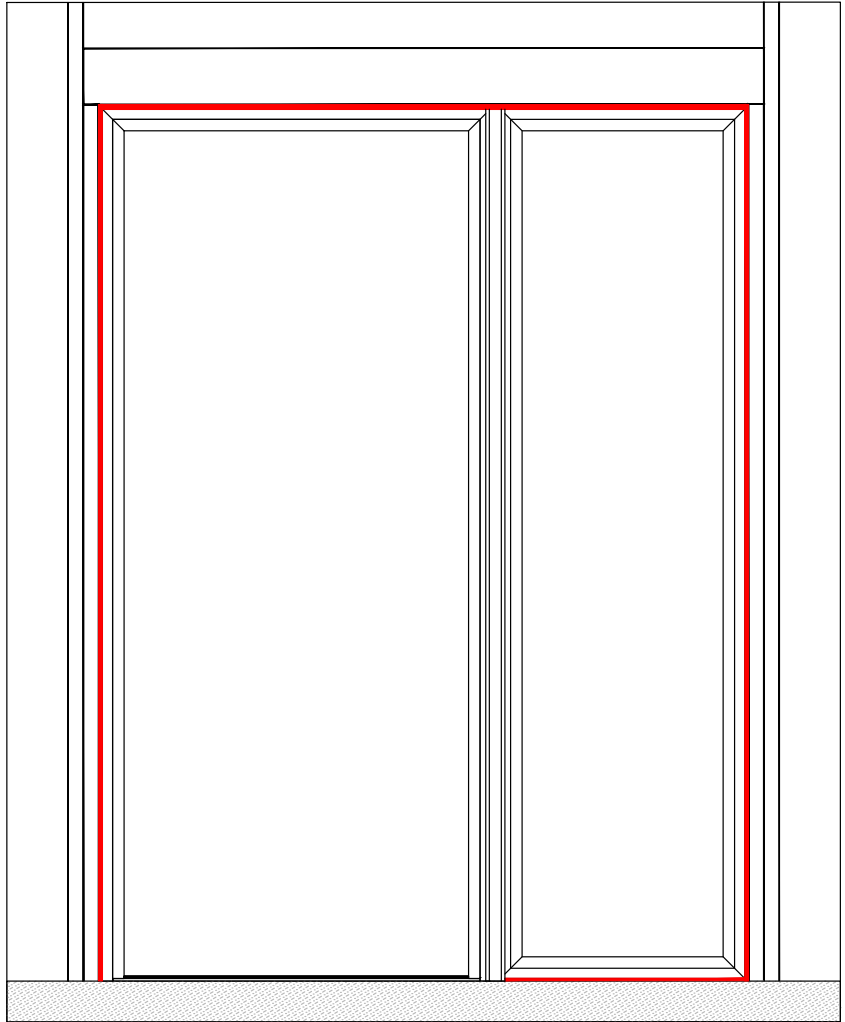


SI3

At the interior, insert a continuous backer rod and seal the window and T-Mullion to the building structure as shown below. Tool as needed.

Note:

Installer to verify that Sealant being used is compatible with Quaker window/door frame and the surrounding building construction materials.



This Completes the Sealing Instructions

Door Installation and Hinge Adjustment Instructions

At this time, lift the door onto the hinges. Adjust the door per the instructions below and on page 18.
Verify locking is still aligned and works properly.

