

## W600/W605 Series 5 7/8" Frame Depth Casement (Project-Out)

### W600/W605 Series Casement (Project-Out)

#### Features

- ◊ **Framing System**
  - Patented OptiCore Technology
  - Architectural grade aluminum exterior
  - Dual Euro-Groove frame system
  - 5 7/8" overall frame depth (4 5/8" from fin to interior)
- ◊ **Enhanced Design**
  - Azo-Core Thermal Barrier System for reduced thermal-conductivity and increased energy-efficiency
  - Pine wood interior
  - Modern, squared frame glazing
  - 2 3/8" narrow sitelines
  - With or without Integral Nailing Fin
- ◊ **Glazing**
  - 1" insulating glass
  - Dual-sealed Warm Edge Super Spacer system
- ◊ **Hardware**
  - Heavy-commercial Amesbury/Truth lock and crank-out system
- ◊ **Screen**
  - Easily removable FlexScreen system carries a lifetime warranty

#### Options

- ◊ **Available Configurations**
  - Project-out Casement (Left or Right)
  - Continuous frame capabilities
- ◊ **Enhanced Design**
  - Traditional/Historic beveled frame glazing (W605 Series)
- ◊ **Muntin Choices**
  - Internal or simulated divided lites available
- ◊ **Hardware and Screen**
  - ADA Hardware
  - Limited travel hardware
  - Retractable screen systems
- ◊ **Glazing**
  - Multiple Low-E and argon glazing choices
  - Impact-rated glazing package
  - Glazing pocket can accept up to 1 3/8" insulating glass for sound attenuation purposes
  - Triple glazing
  - Capillary tubes
  - Wide variety of tinting and pane thickness options
- ◊ **Panning & Trim Choices**
  - Wide variety of panning, receptor and trim available
- ◊ **Mulling**
  - Wide variety of structural mulls

#### Performance

- ◊ Structural & Thermal (test reports available upon request)

|   |                        |
|---|------------------------|
| Model   | Casement (Project-Out) |
| NAFS Rating   | Up to AW-100           |
| Test Size   | 48" x 84" (Maximum)    |
| Design Pressure (P.S.F.)  | Up to 100              |
| Air Infiltration (cfm/ft <sup>2</sup> )                                   | <0.10                  |
| Water Resistance (P.S.F.)   | Up to 15               |
| CR (Condensation Resistance)  | 45-78                  |
| U-Value (ranges based on multiple Low-E/Argon combinations)               | 0.18-0.34              |
| SHGC (ranges based on multiple Low-E/Argon combinations)                  | 0.11-0.45              |
| OITC/STC (ranges are based on the use of multiple glass pane thicknesses) | 23-34/29-42            |

#### Benefits

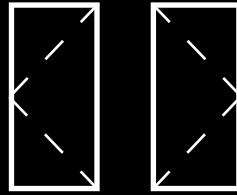
- ◊ Capacity to match exterior colors for unique project facades
- ◊ Two-tone capabilities with a color to match the building interior and another to match the exterior
- ◊ Maximum sizing affords the facilitation of large sizes for taller and wider window openings
- ◊ Dynamic thermal performance for a wood clad window

Operating Force (per ASTM E2068):  
13 N 3 lbf (Initiate motion and  
Maintain Motion)

Due to periodic re-certification requirements, result shown may vary.

Our products are tested to the standards of and certified by some of the foremost organizations in the fenestration industry.



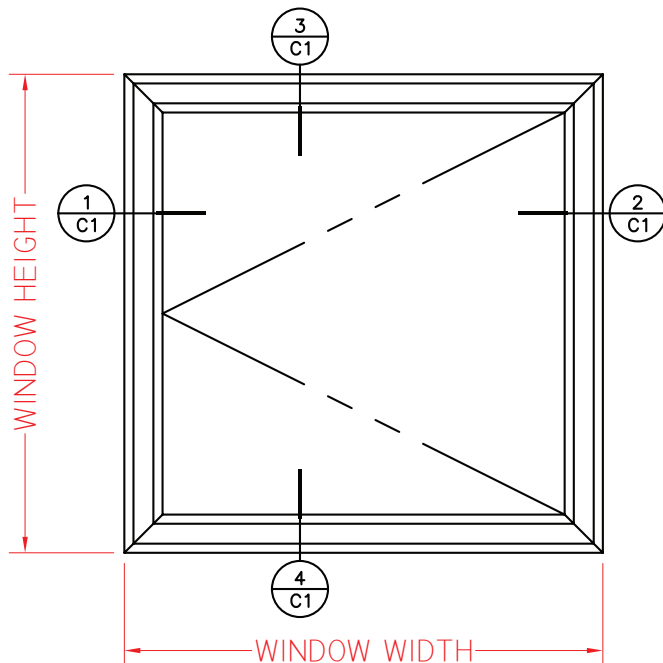
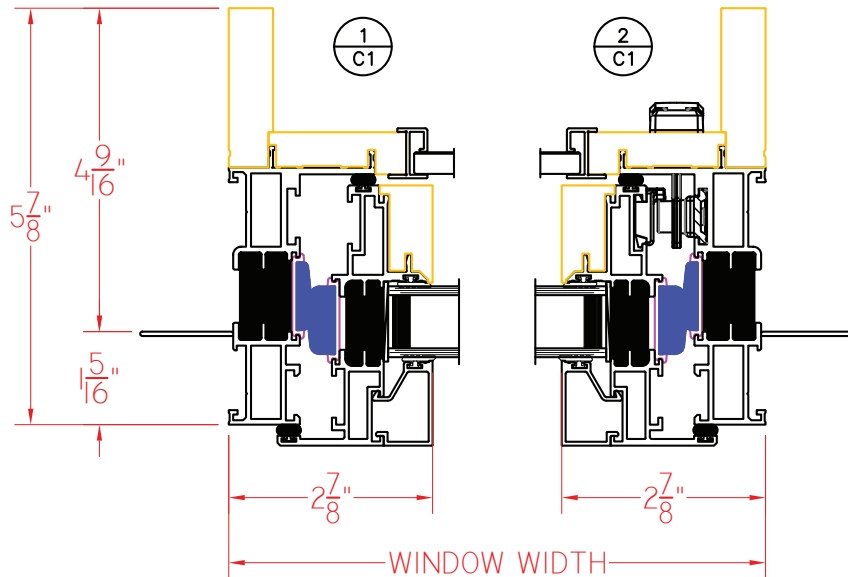


# W600 Series 5 7/8" Overall Frame Depth Casement (Project-Out)

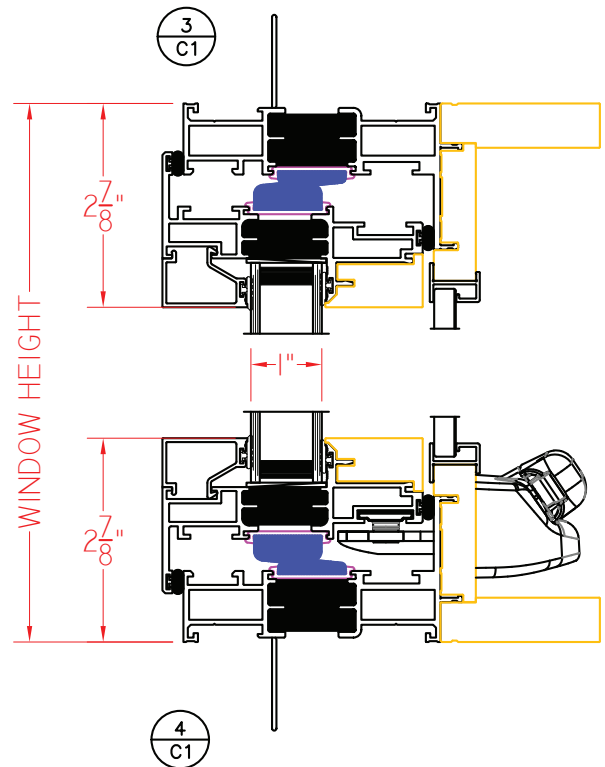
## W600 Series Casement (Project-Out)

Shown with Square Glazing Stops, Roto Hardware, and Nailing Fin

This document contains confidential and proprietary information intended for the private use of Quaker. © 2019 Quaker Window Products Co., All rights reserved. Quaker reserves the right to change any/all designs without notice.



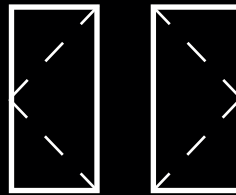
ELEVATION SCALE 3/4" = 1'-0"



SCALE 1:3

Our products are tested to the standards of and certified by some of the foremost organizations in the fenestration industry.



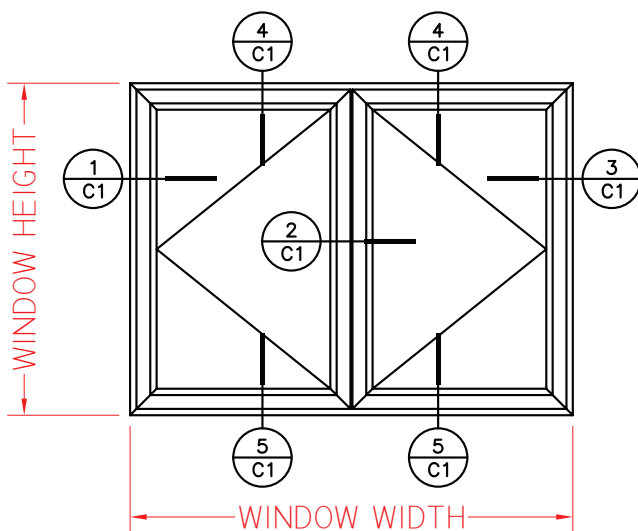
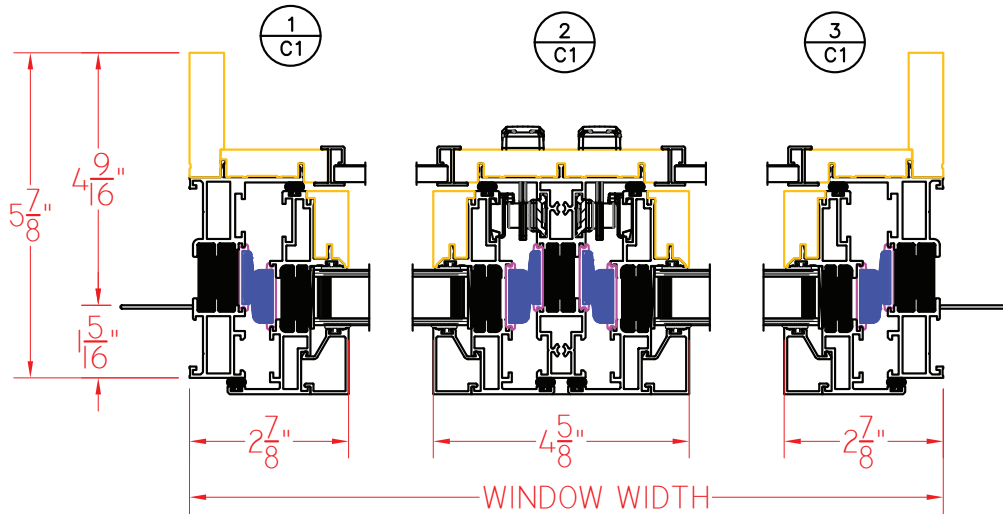


# W600 Series 5 7/8" Overall Frame Depth Casement (Project-Out)

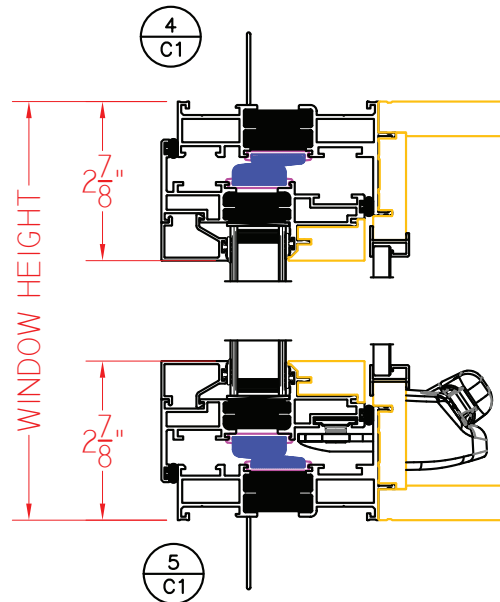
## W600 Series Casement/Casement

Shown with Square  
Glazing Stops, Roto  
Hardware, and Nailing Fin

This document contains confidential and proprietary information intended for the private use of Quaker.  
© 2019 Quaker Window Products Co., All rights reserved.  
Quaker reserves the right to change any/all designs without notice.



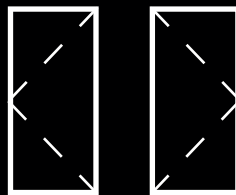
ELEVATION SCALE 1/2" = 1'-0"



SCALE 3" = 1'-0"

Our products are tested to the standards of and certified by some of the foremost organizations in the fenestration industry.



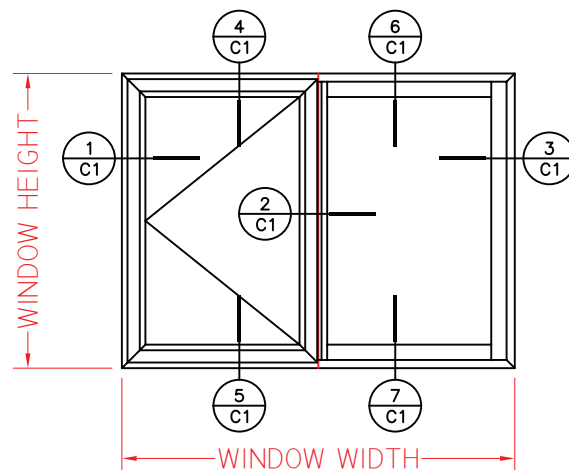
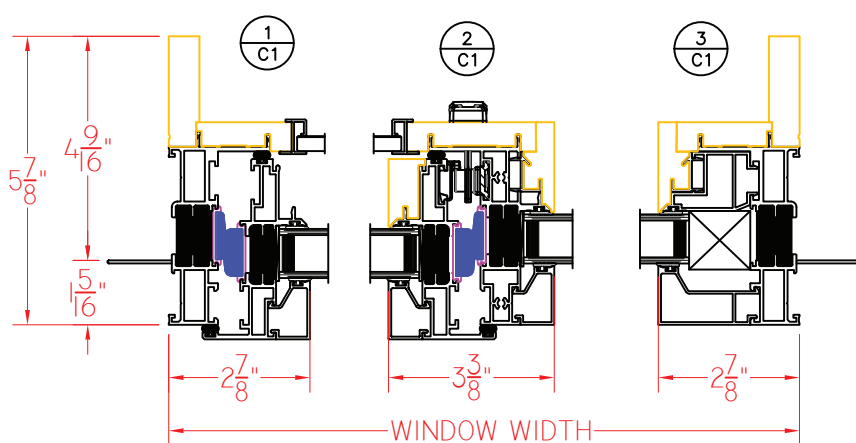


# W600/W605 Series 5 7/8" Overall Frame Depth Casement (Project-Out)

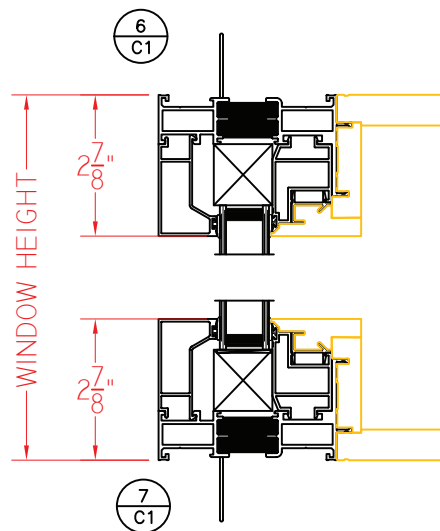
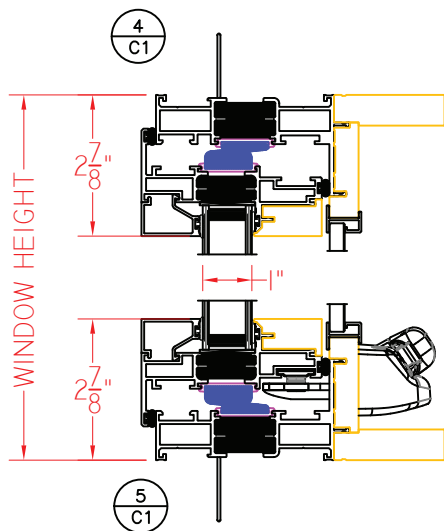
## W600 Series Casement/Fixed

Shown with Square Glazing  
Stops, Roto Hardware and  
Nailing Fin

This document contains confidential and proprietary information  
intended for the private use of Quaker.  
© 2019 Quaker Window Products Co., All rights reserved.  
Quaker reserves the right to change any/all designs without notice.



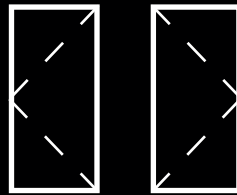
ELEVATION SCALE 1/2" = 1'-0"



SCALE 3" = 1'-0"

Our products are tested to the standards of and  
certified by some of the foremost organizations  
in the fenestration industry.



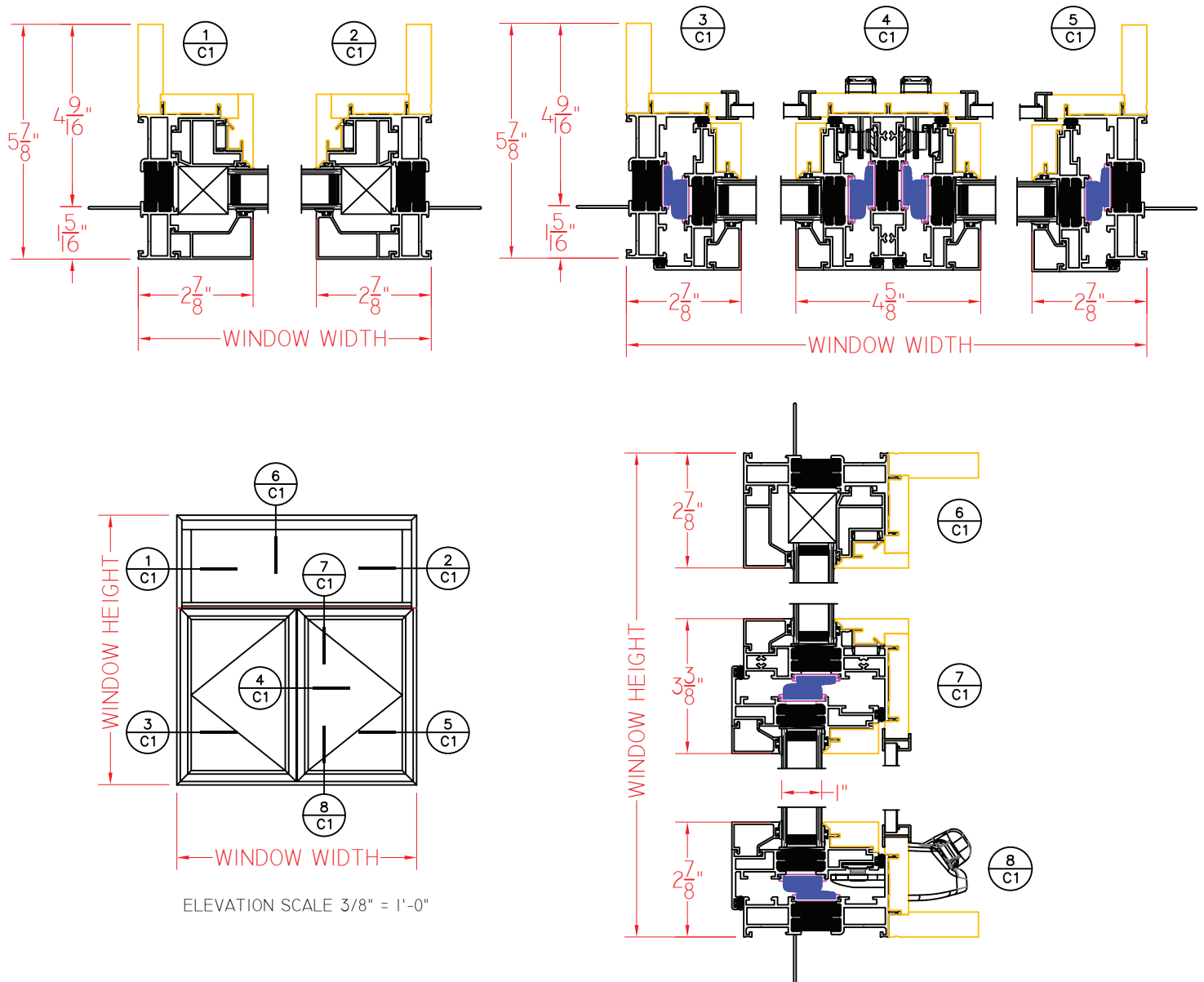


# W600/W605 Series 5 7/8" Overall Frame Depth Casement (Project-Out)

## W600 Series Casement/Casement/Fixed

Shown with Square Glazing  
Stops, Roto Hardware and  
Nailing Fin

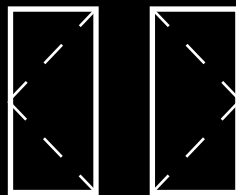
This document contains confidential and proprietary information  
intended for the private use of Quaker.  
© 2019 Quaker Window Products Co., All rights reserved.  
Quaker reserves the right to change any/all designs without notice.



SCALE 3" = 1'-0"

Our products are tested to the standards of and  
certified by some of the foremost organizations  
in the fenestration industry.



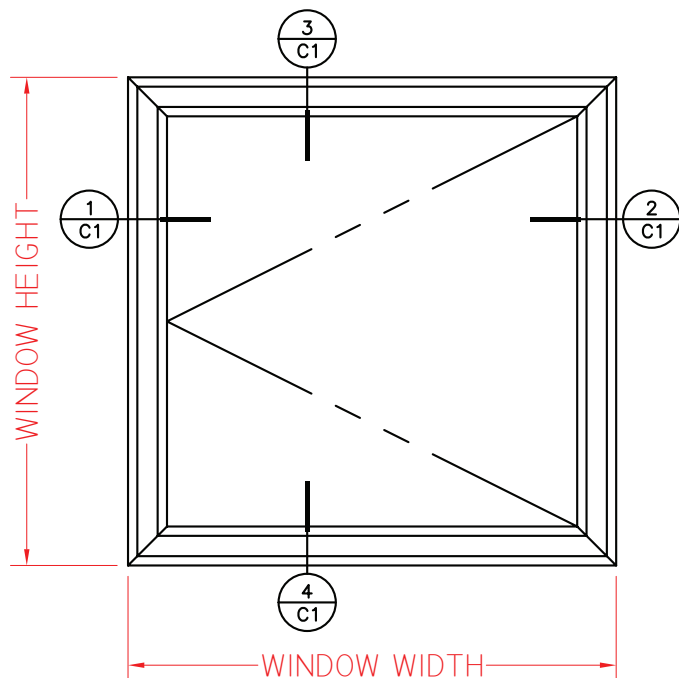
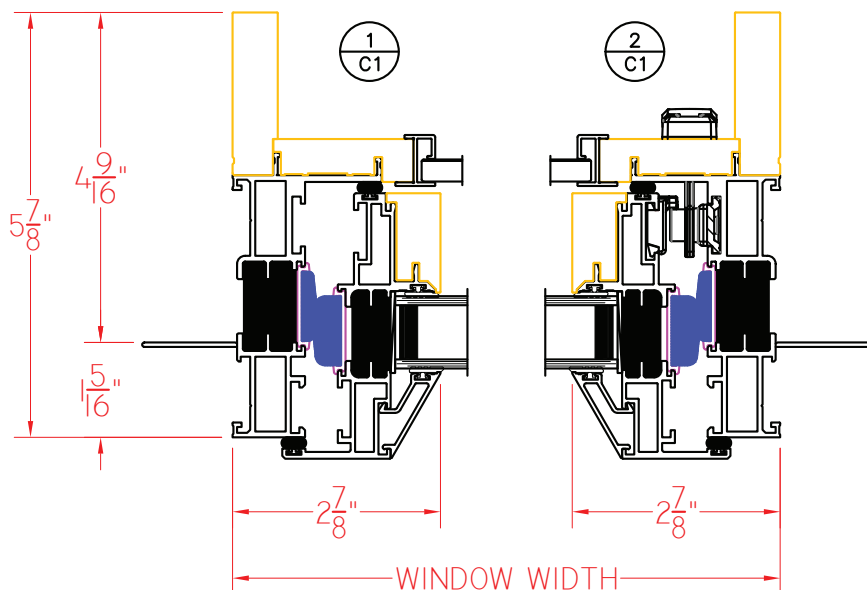


# W600/W605 Series 5 7/8" Overall Frame Depth Casement (Project-Out)

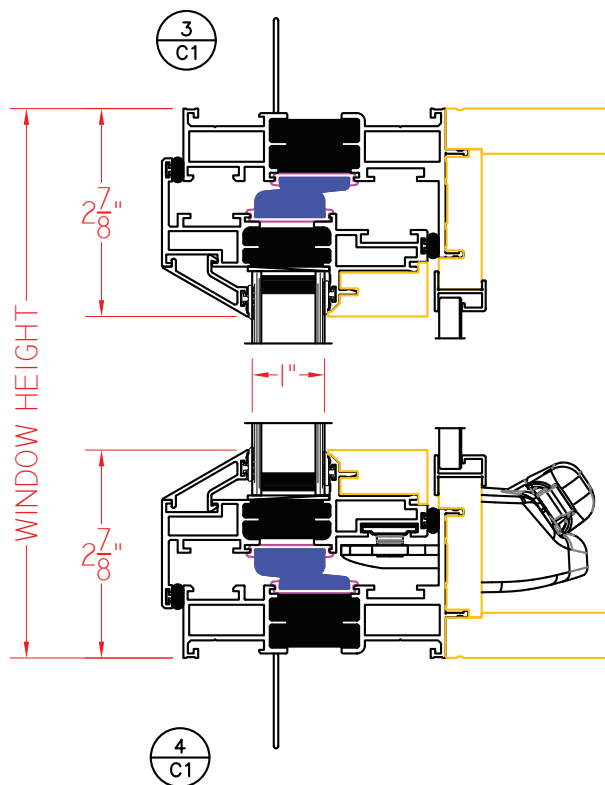
## W605 Series Casement (Project-Out)

Shown with Beveled Glazing  
Stops, Roto Hardware and  
Nailing Fin

This document contains confidential and proprietary information intended for the private use of Quaker.  
© 2019 Quaker Window Products Co., All rights reserved.  
Quaker reserves the right to change any/all designs without notice.



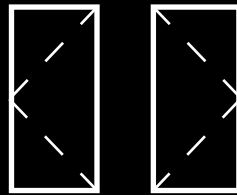
ELEVATION SCALE 3/4" = 1'-0"



SCALE 1:3

Our products are tested to the standards of and certified by some of the foremost organizations in the fenestration industry.



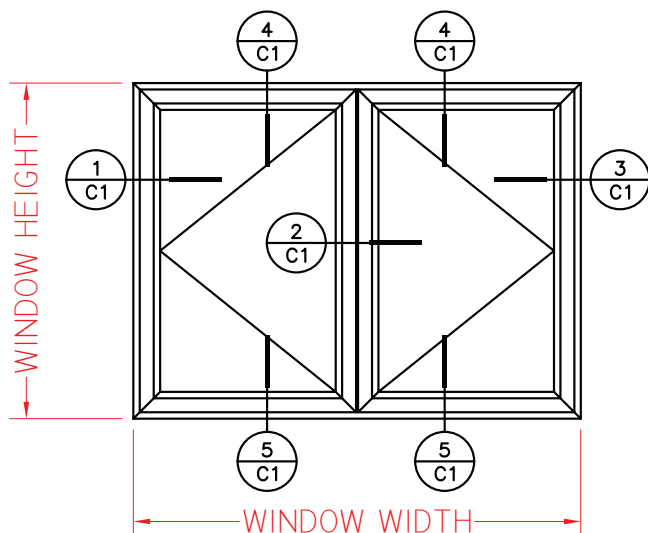
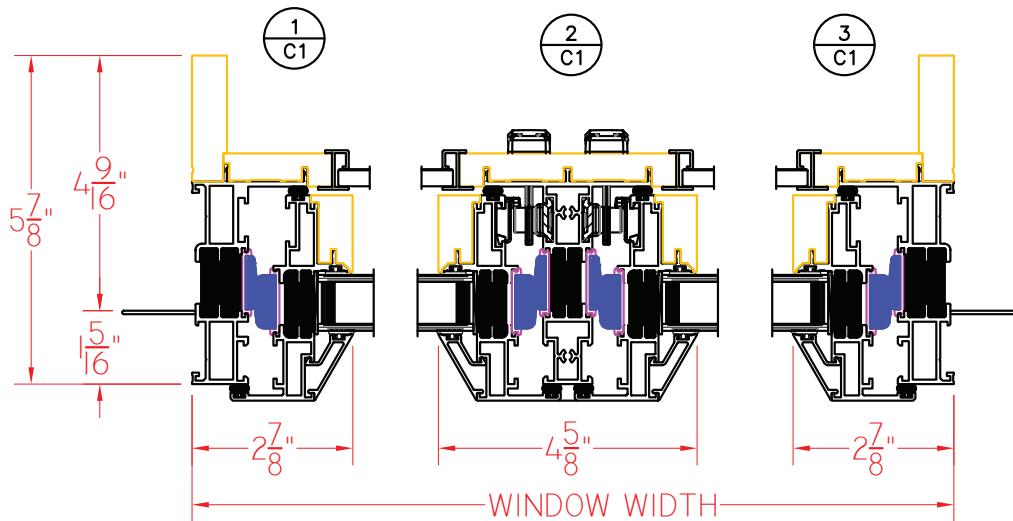


# W600/W605 Series 5 7/8" Overall Frame Depth Casement (Project-Out)

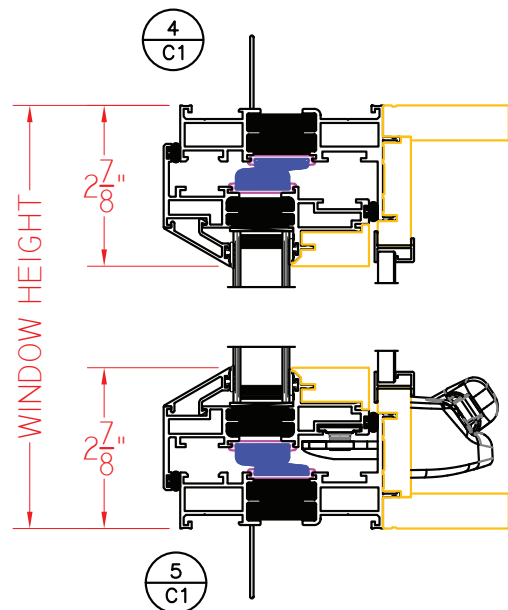
## W605 Series Casement/Casement

Shown with Beveled  
Glazing Stops, Roto  
Hardware and Nailing Fin

This document contains confidential and proprietary information intended for the private use of Quaker.  
© 2019 Quaker Window Products Co., All rights reserved.  
Quaker reserves the right to change any/all designs without notice.



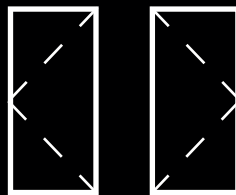
ELEVATION SCALE 1/2" = 1'-0"



SCALE 3" = 1'-0"

Our products are tested to the standards of and certified by some of the foremost organizations in the fenestration industry.



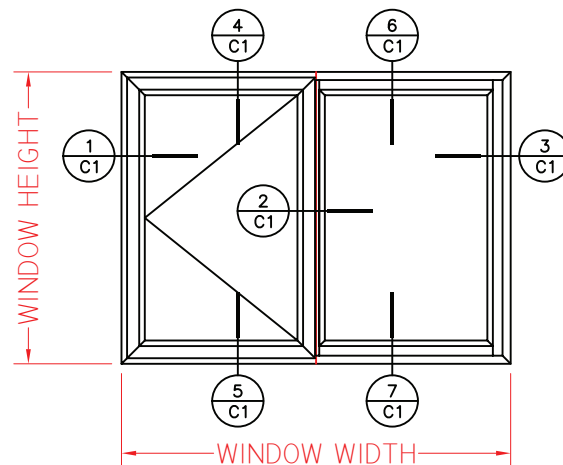
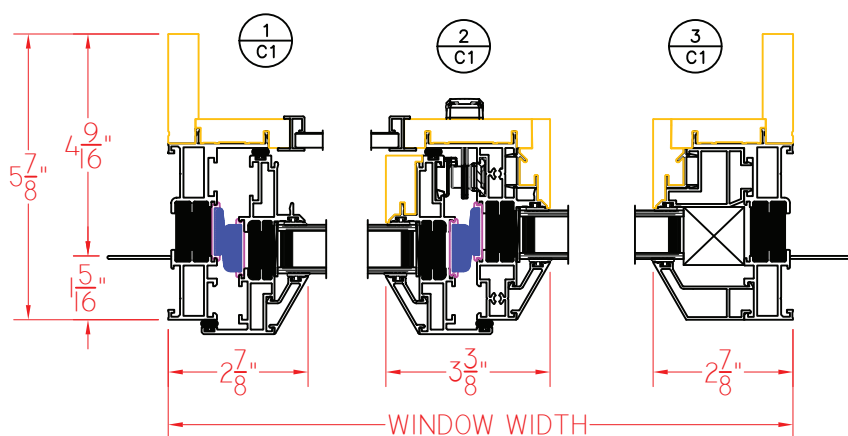


# W600/W605 Series 5 7/8" Overall Frame Depth Casement (Project-Out)

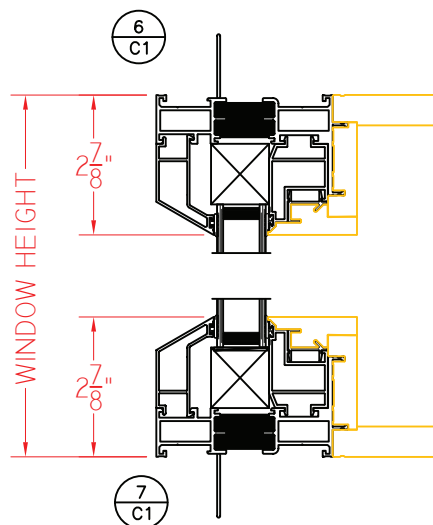
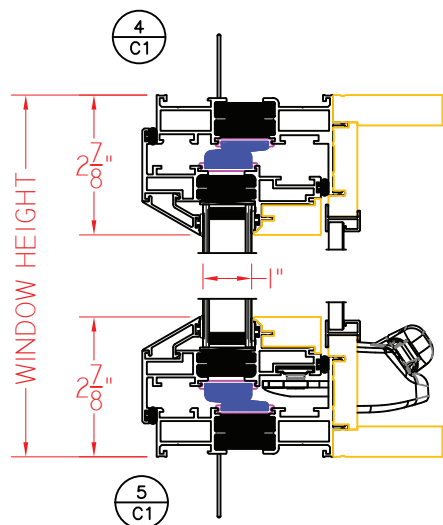
## W605 Series Casement/Fixed

Shown with Beveled Glazing  
Stops, Roto Hardware and  
Nailing Fin

This document contains confidential and proprietary information  
intended for the private use of Quaker.  
© 2019 Quaker Window Products Co., All rights reserved.  
Quaker reserves the right to change any/all designs without notice.



ELEVATION SCALE 1/2" = 1'-0"

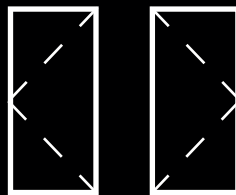


SCALE 3" = 1'-0"

Our products are tested to the standards of and  
certified by some of the foremost organizations  
in the fenestration industry.





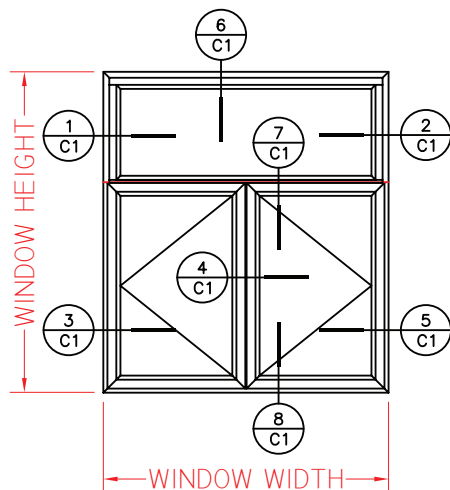
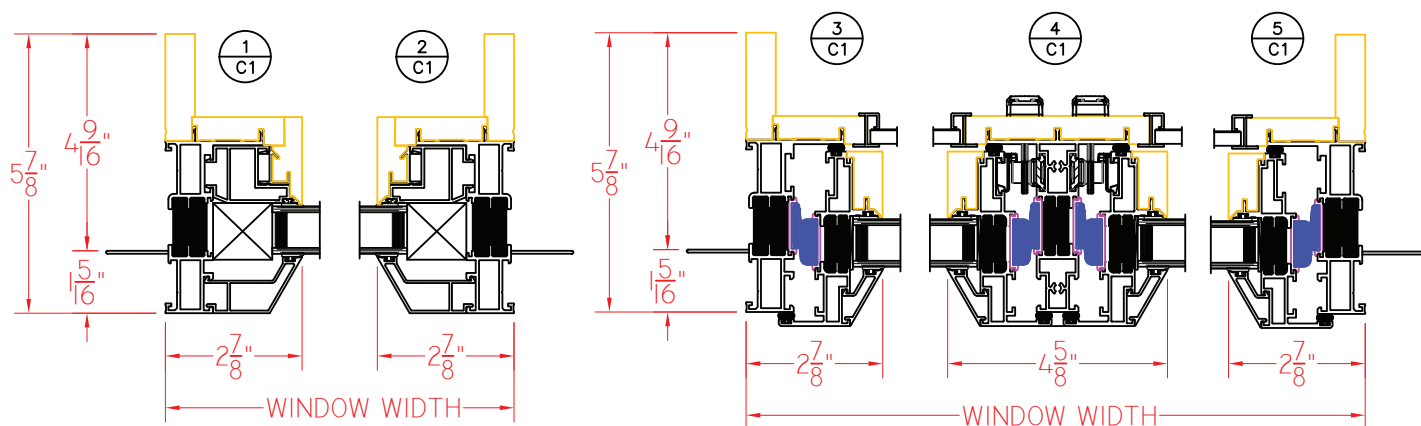


# W600/W605 Series 5 7/8" Overall Frame Depth Casement (Project-Out)

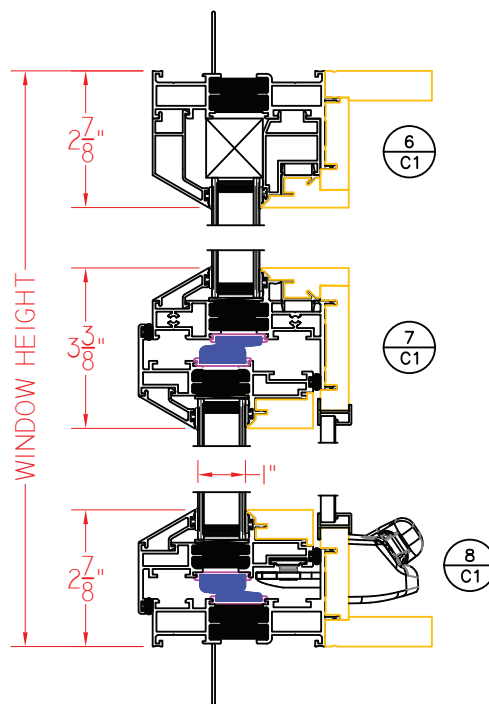
## W605 Series Casement/Casement/Fixed

Shown with Beveled  
Glazing Stops, Roto  
Hardware and Nailing Fin

This document contains confidential and proprietary information intended for the private use of Quaker.  
© 2019 Quaker Window Products Co., All rights reserved.  
Quaker reserves the right to change any/all designs without notice.



ELEVATION SCALE 3/8" = 1'-0"



SCALE 3" = 1'-0"

Our products are tested to the standards of and certified by some of the foremost organizations in the fenestration industry.

