

E300/E350/E500 Series 3 1/4" Frame Depth Fixed (Picture Window)

E300/E350/E500 Series Fixed (Picture Window)

Features

- ◇ Commercial Framing System
 - 3 1/4" main frame
 - 0.062" wall thickness of frame
 - Frame and sill mortised and joined with screw fasteners
- ◇ Enhanced Design
 - Azon pour and debridge thermal break is 1/2" wide in all main frame and vent rail extrusions
- ◇ Glazing
 - 1" insulating glass

Benefits

- ◇ The capacity to match exterior colors for unique project facades
- ◇ The ability to facilitate large sizes for taller and wider window openings

Performance

- ◇ Structural & Thermal (test reports or thermal simulations available upon request)

Model	Fixed (Picture Window)
Test Size	60" x 99"
NAFS Rating	AW-50
Structural Load P.S.F.	105
Air Infiltration	<0.10
Water (No Penetration) P.S.F.	10
U-Value (ranges based on multiple Low-E/Argon combinations)	0.14-0.45
SHGC (ranges based on multiple Low-E/Argon combinations)	0.11-0.68

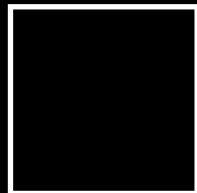
Due to periodic re-certification requirements, result shown may vary.

Options

- ◇ Available Configurations
 - Picture window
 - Geometric shapes
- ◇ Muntin Choices
 - Internal or simulated divided lites available
- ◇ Nailing Fin
- ◇ Glazing
 - Multiple Low-E and argon glazing choices
 - Capillary tubes
 - Wide variety of glazing, tinting and thickness options
- ◇ Panning & Trim Choices
 - Wide variety of panning, receptor and trim available
- ◇ Mulling
 - Wide variety of structural mulls

Our products are tested to the standards of and certified by some of the foremost organizations in the fenestration industry.





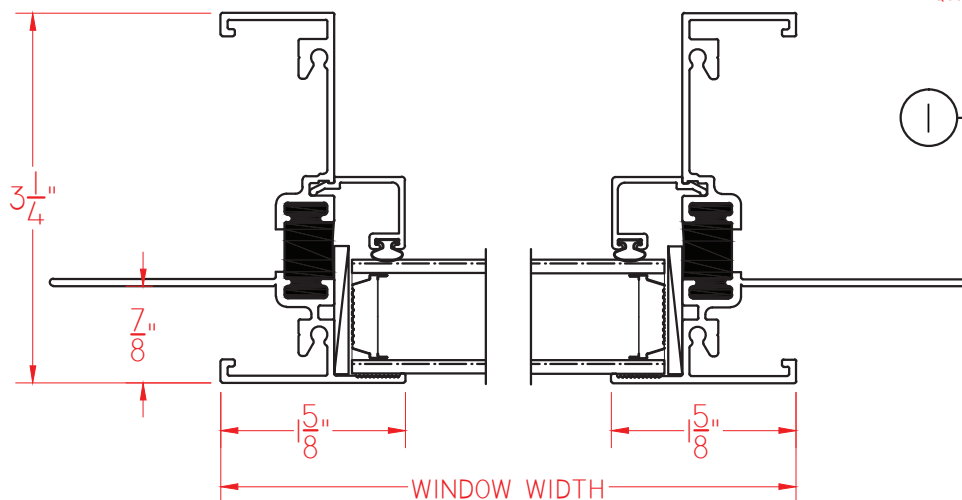
E300/E350/E500 Series 3 1/4" Frame Depth Fixed (Picture Window)

E300/E350/E500 Series Fixed (Picture Window)

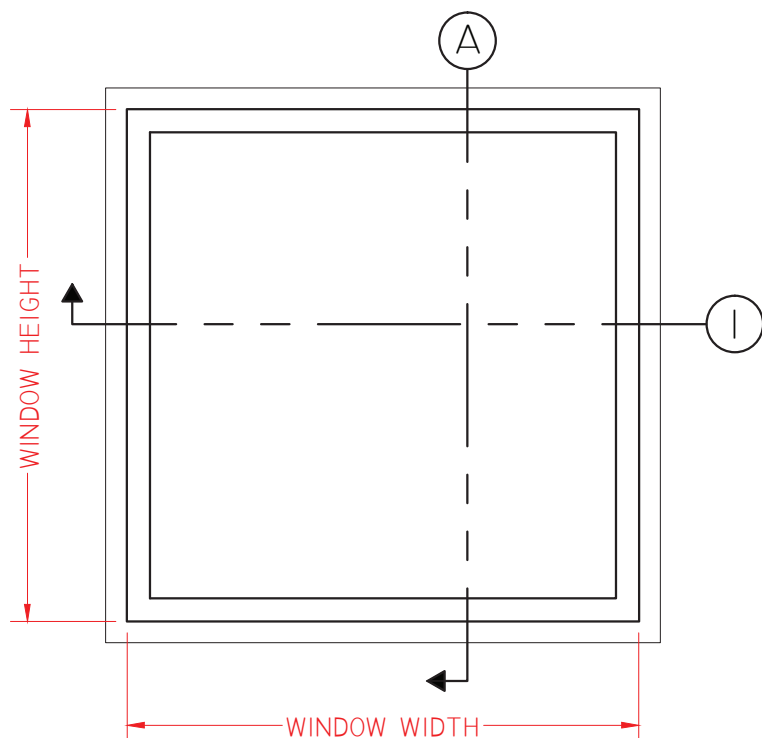
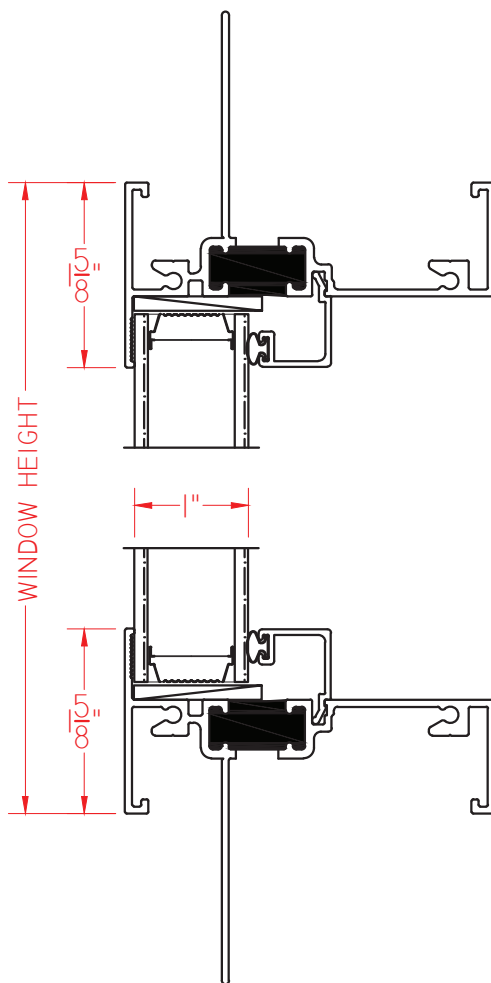
Shown with
Nailing Fin

This document contains confidential and proprietary information intended for the private use of Quaker.
© 2016 Quaker Window Products Co., Inc. All rights reserved.
Quaker reserves the right to change any/all designs without notice.

① HORIZONTAL
CROSS SECTION



Ⓐ VERTICAL
CROSS SECTION

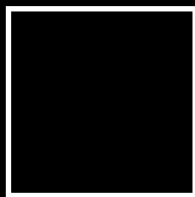


ELEVATION SCALE 3/4" = 1'-0"

SCALE 1:2

Our products are tested to the standards of and certified by some of the foremost organizations in the fenestration industry.



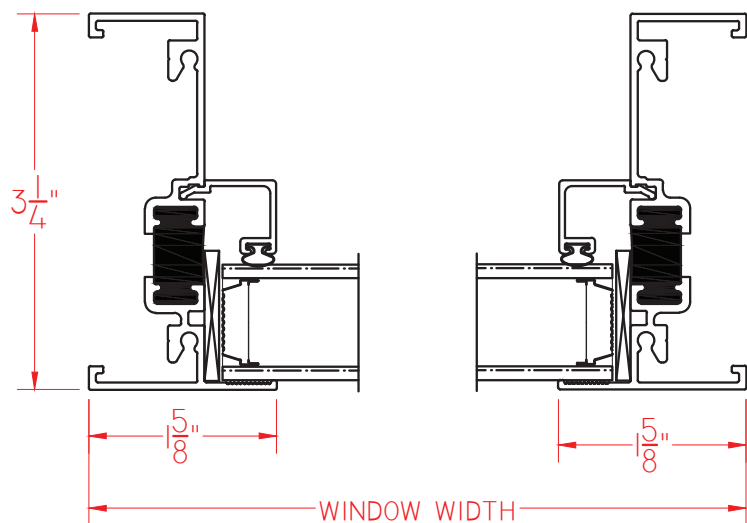


E300/E350/E500 Series 3 1/4" Frame Depth Fixed (Picture Window)

E300/E350/E500 Series Fixed (Picture Window)

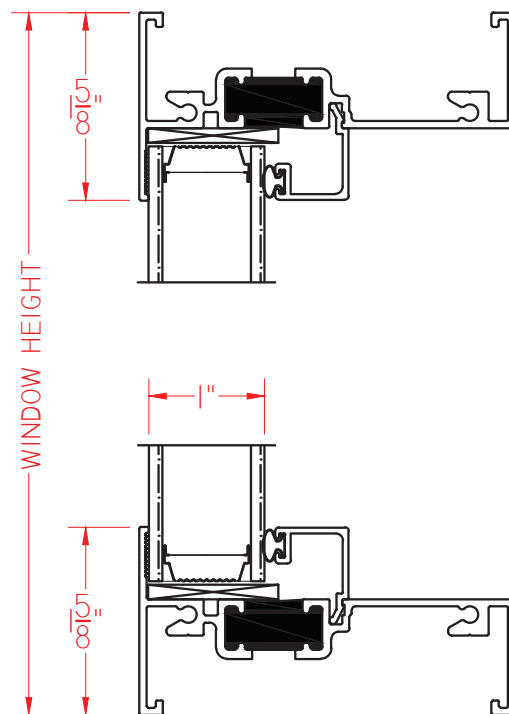
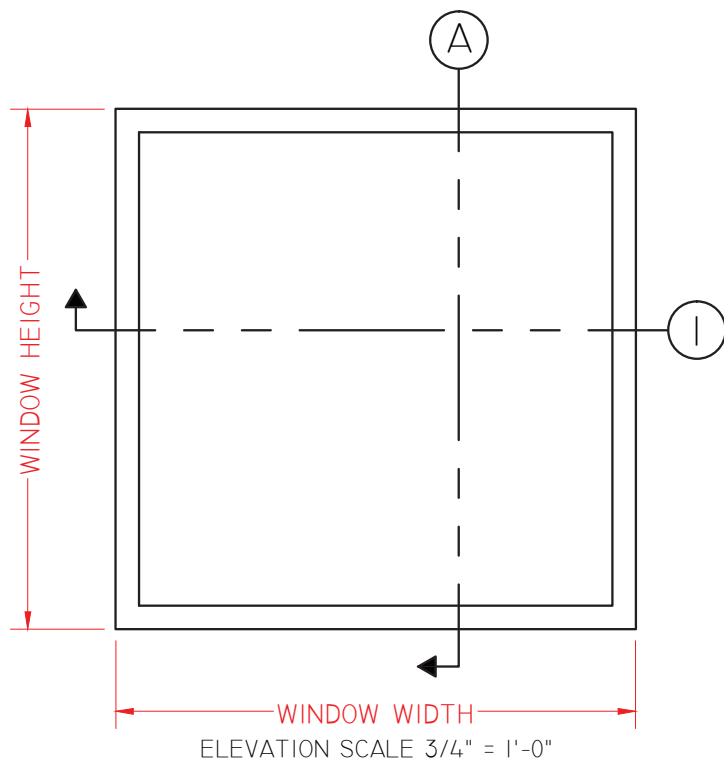
Shown without
Nailing Fin

This document contains confidential and proprietary information intended for the private use of Quaker.
© 2016 Quaker Window Products Co., Inc. All rights reserved.
Quaker reserves the right to change any/all designs without notice.



① HORIZONTAL
CROSS SECTION

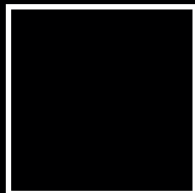
Ⓐ VERTICAL
CROSS SECTION



SCALE 1:2

Our products are tested to the standards of and certified by some of the foremost organizations in the fenestration industry.



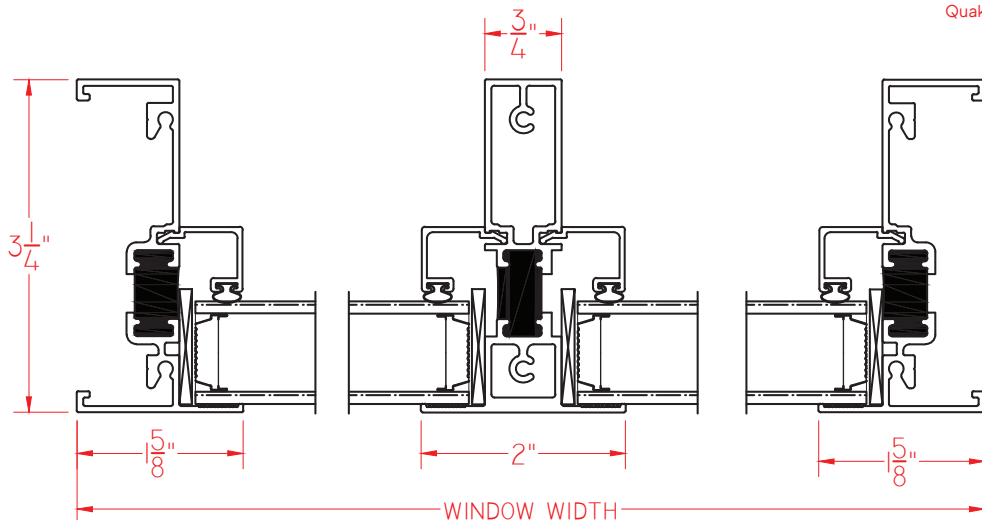


E300/E350/E500 Series 3 1/4" Frame Depth Fixed (Picture Window)

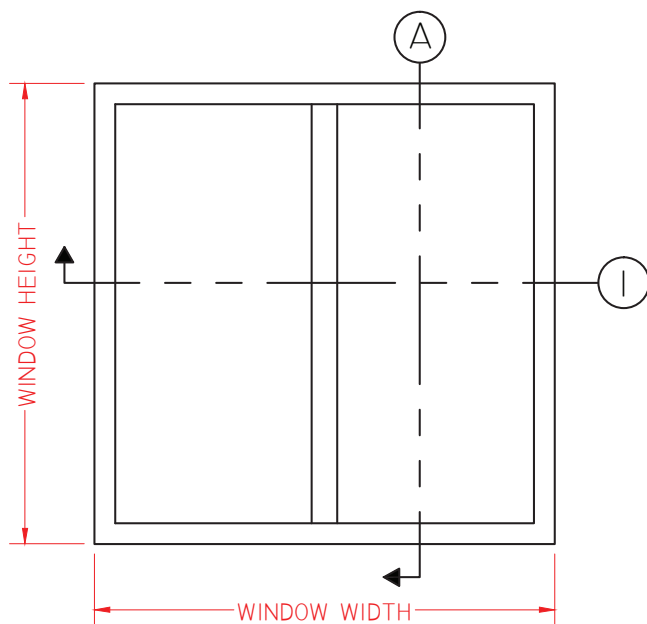
E300/E350/E500 Series Fixed (Picture Window)

Shown with Double Jamb
(M-18867) and
2" vertical center sightline

This document contains confidential and proprietary information intended for the private use of Quaker.
© 2016 Quaker Window Products Co., Inc. All rights reserved.
Quaker reserves the right to change any/all designs without notice.

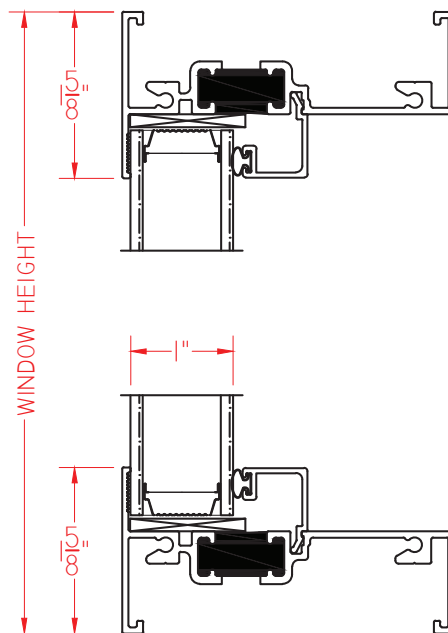


① HORIZONTAL
CROSS SECTION



ELEVATION SCALE 3/4" = 1'-0"

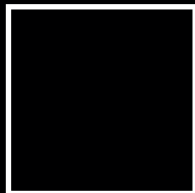
Ⓐ VERTICAL
CROSS SECTION



SCALE 1:2

Our products are tested to the standards of and certified by some of the foremost organizations in the fenestration industry.



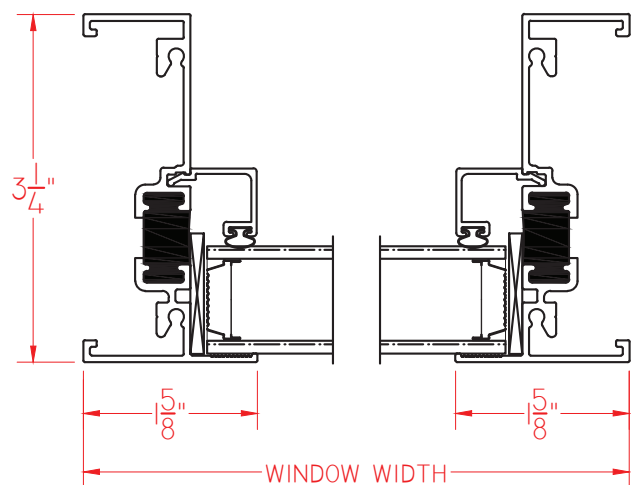


E300/E350/E500 Series 3 1/4" Frame Depth Fixed (Picture Window)

E300/E350/E500 Series Fixed (Picture Window)

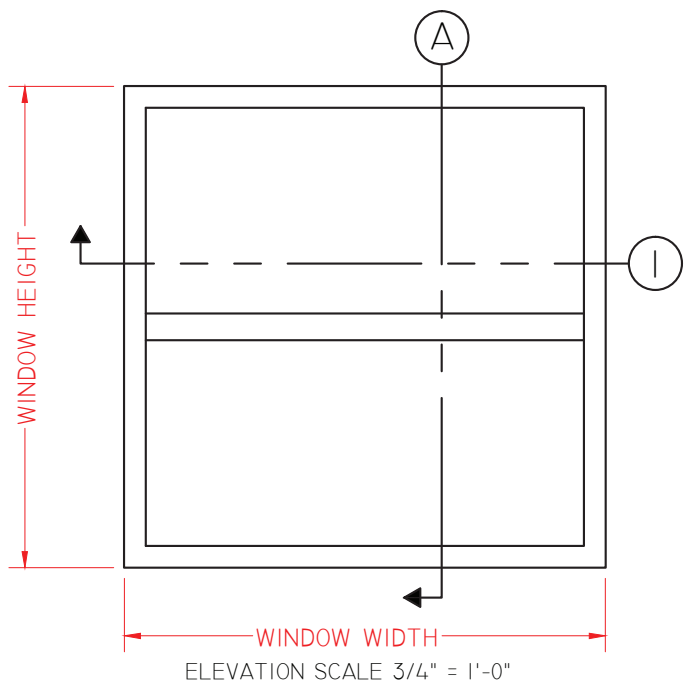
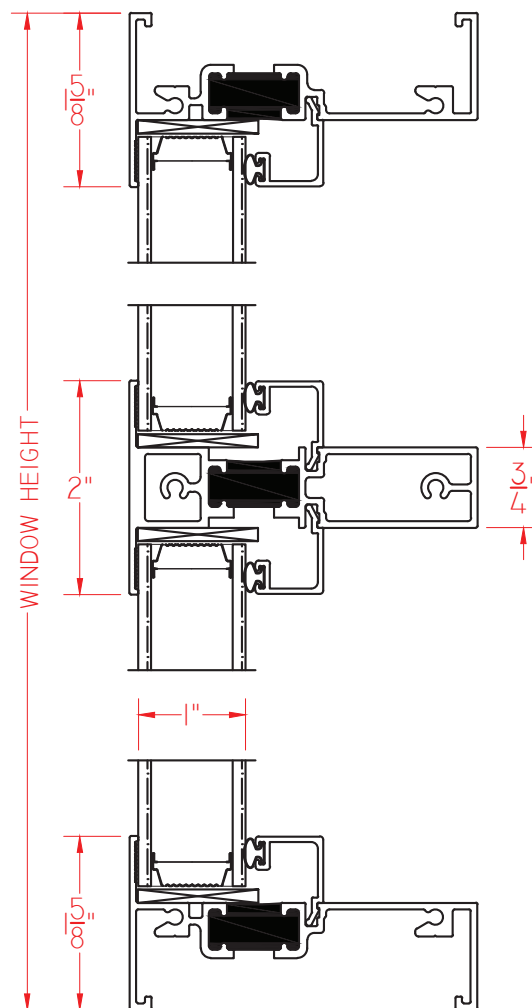
Shown with Double Jamb
(M-18867) and 2"
horizontal center sightline

This document contains confidential and proprietary information intended for the private use of Quaker.
© 2016 Quaker Window Products Co., Inc. All rights reserved.
Quaker reserves the right to change any/all designs without notice.



① HORIZONTAL
CROSS SECTION

Ⓐ VERTICAL
CROSS SECTION



SCALE 1:2

Our products are tested to the standards of and certified by some of the foremost organizations in the fenestration industry.

