

## V250 Series 3 1/4" Frame Depth Horizontal Slider

### V250 Series Horizontal Slider

#### Features

- ◇ **Material**
  - uPVC Vinyl
- ◇ **Commercial Framing System**
  - 3 1/4" main frame
  - 0.060" wall thickness of frame, 0.055" wall thickness of sash
- ◇ **Enhanced Design**
  - Mitered and welded corners
- ◇ **Glazing**
  - 3/4" insulating glass
- ◇ **Hardware**
  - Brass rollers with stainless steel axle pins for easy operation
- ◇ **Screen**
  - Extruded aluminum screen frame with BetterVue™ mesh with WaterShed® technology
- ◇ **Colors**
  - White or Sandstone vinyl (interior/exterior)

#### Benefits

- ◇ The capacity to match exterior colors for unique project facades
- ◇ The ability to facilitate large sizes for taller and wider window openings

#### Performance

- ◇ Structural & Thermal (test reports or thermal simulations available upon request)

Model	Horizontal Slider
AAMA/WDMA/CSA 101/I.S.2/A440-08 Rating	LC-35
Test Size	63" x 44"
Structural Load P.S.F.	75
Air Infiltration (cfm/ft <sup>2</sup> )	<0.30
Water (No Penetration) P.S.F.	7.5
U-Value (ranges based on multiple Low-E/Argon combinations)	0.25-0.52
SHGC (ranges based on multiple Low-E/Argon combinations)	0.12-0.62

Due to periodic re-certification requirements, result shown may vary.

#### Options

- ◇ **Available Configurations**
  - Fixed-Active
  - Active-Fixed
  - Active-Fixed-Active
  - Fixed-Active-Fixed
- ◇ **Muntin Choices**
  - Internal or simulated divided lites available
- ◇ **Limited Travel Hardware**
- ◇ **Nailing Fin**
- ◇ **Screen**
  - Extruded aluminum screen frame with aluminum wire mesh
  - Extruded aluminum screen frame with sunscreen mesh
  - Extruded aluminum screen frame with stainless steel 0.009" thickness mesh
- ◇ **Glazing**
  - Triple glazing (Energy TG)
  - Capillary tubes
  - Wide variety of glazing, tinting and thickness options
- ◇ **Panning & Trim Choices**
  - Wide variety of panning, receptor and trim available
- ◇ **Mulling**
  - Wide variety of structural mulls
- ◇ **Colors**
  - High-performance Textured Black laminate (interior/exterior)
  - High-performance Textured Black laminate, Textured Dark Bronze laminate, Textured Dark Grey laminate or Resembles Clear Anodized laminate (exterior only with White vinyl)
  - Twelve painted exterior colors (with White or Sandstone vinyl interior)
  - Unlimited custom painted exterior colors

Operating Force: 24 lbf (Initiate motion), 7 lbf (Maintain motion), 1 lbf (Locks)

Our products are tested to the standards of and certified by some of the foremost organizations in the fenestration industry.

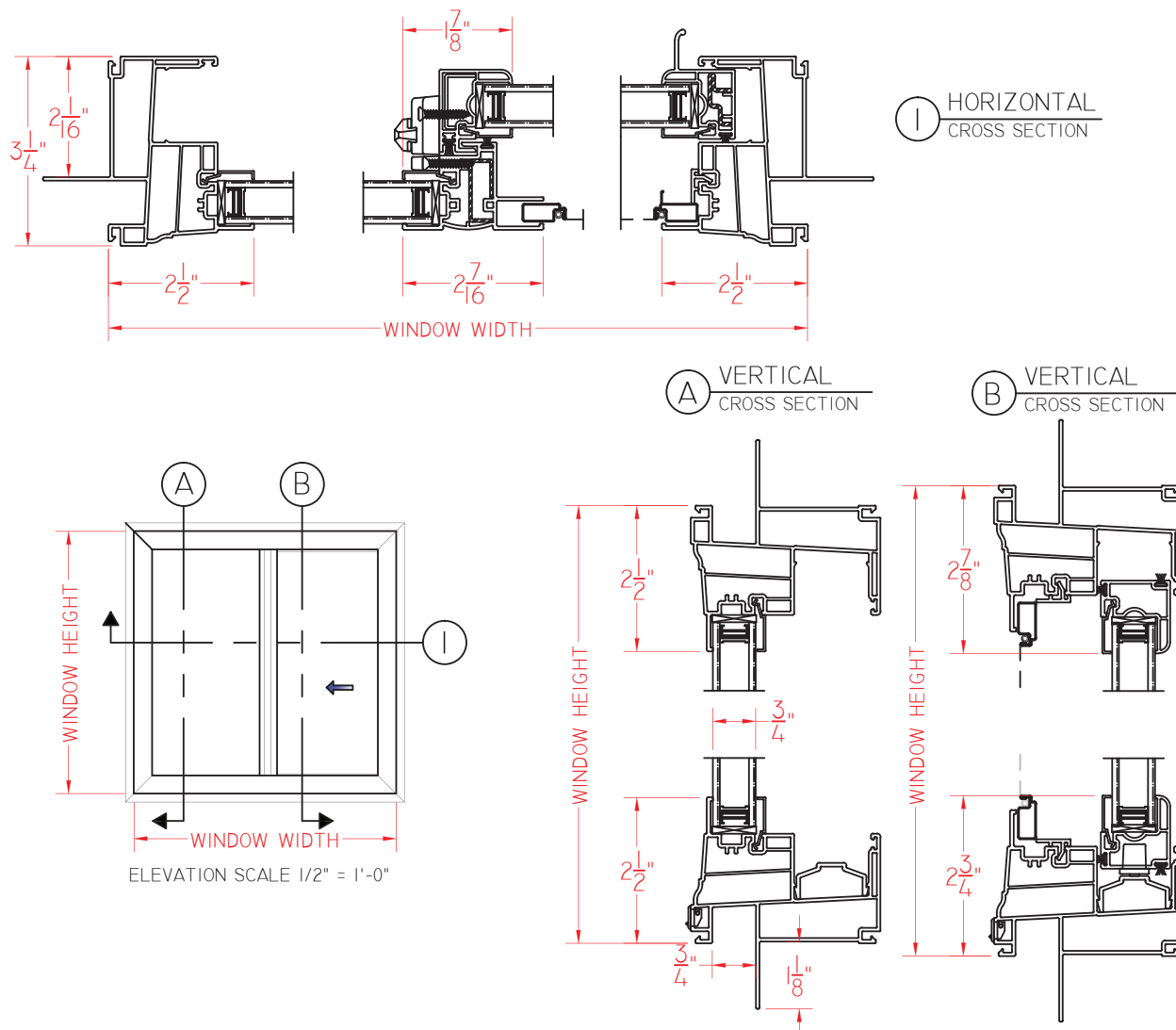




# V250 Series 3 1/4" Frame Depth Horizontal Slider

## V250 Series Horizontal Slider

This document contains confidential and proprietary information intended for the private use of Quaker.  
© 2016 Quaker Window Products Co., Inc. All rights reserved.  
Quaker reserves the right to change any/all designs without notice.



SCALE 1:3

Our products are tested to the standards of and certified by some of the foremost organizations in the fenestration industry.

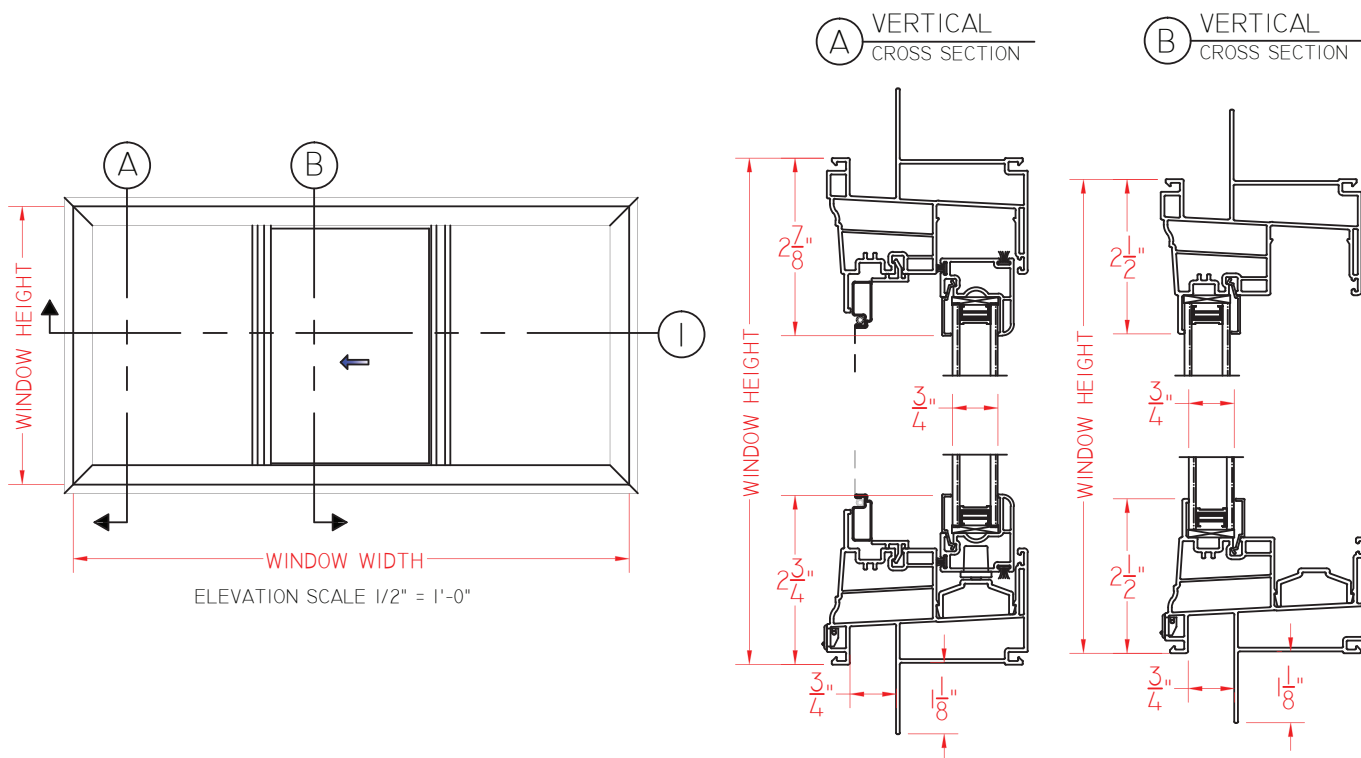
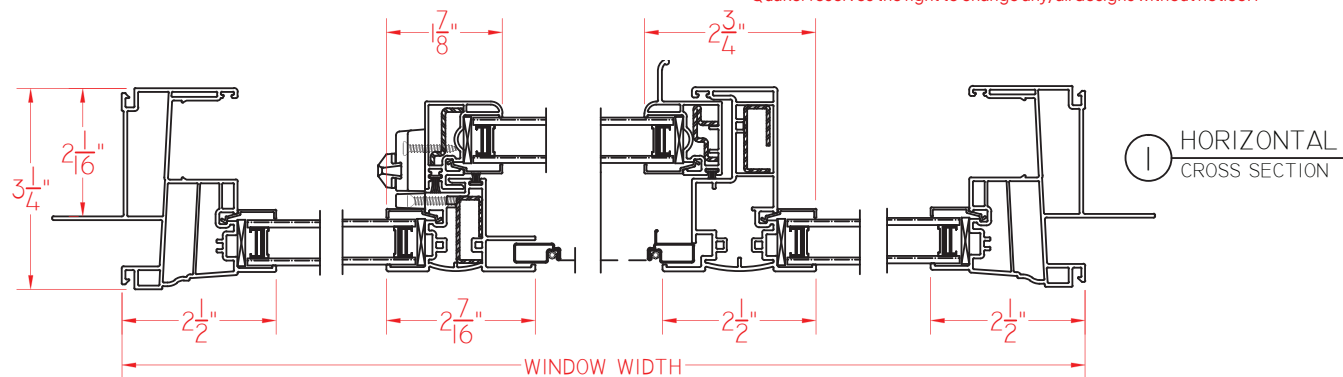




# V250 Series 3 1/4" Frame Depth Horizontal Slider

## V250 Series Center Vent Horizontal Slider

This document contains confidential and proprietary information intended for the private use of Quaker.  
© 2016 Quaker Window Products Co., Inc. All rights reserved.  
Quaker reserves the right to change any/all designs without notice.



SCALE 1:3

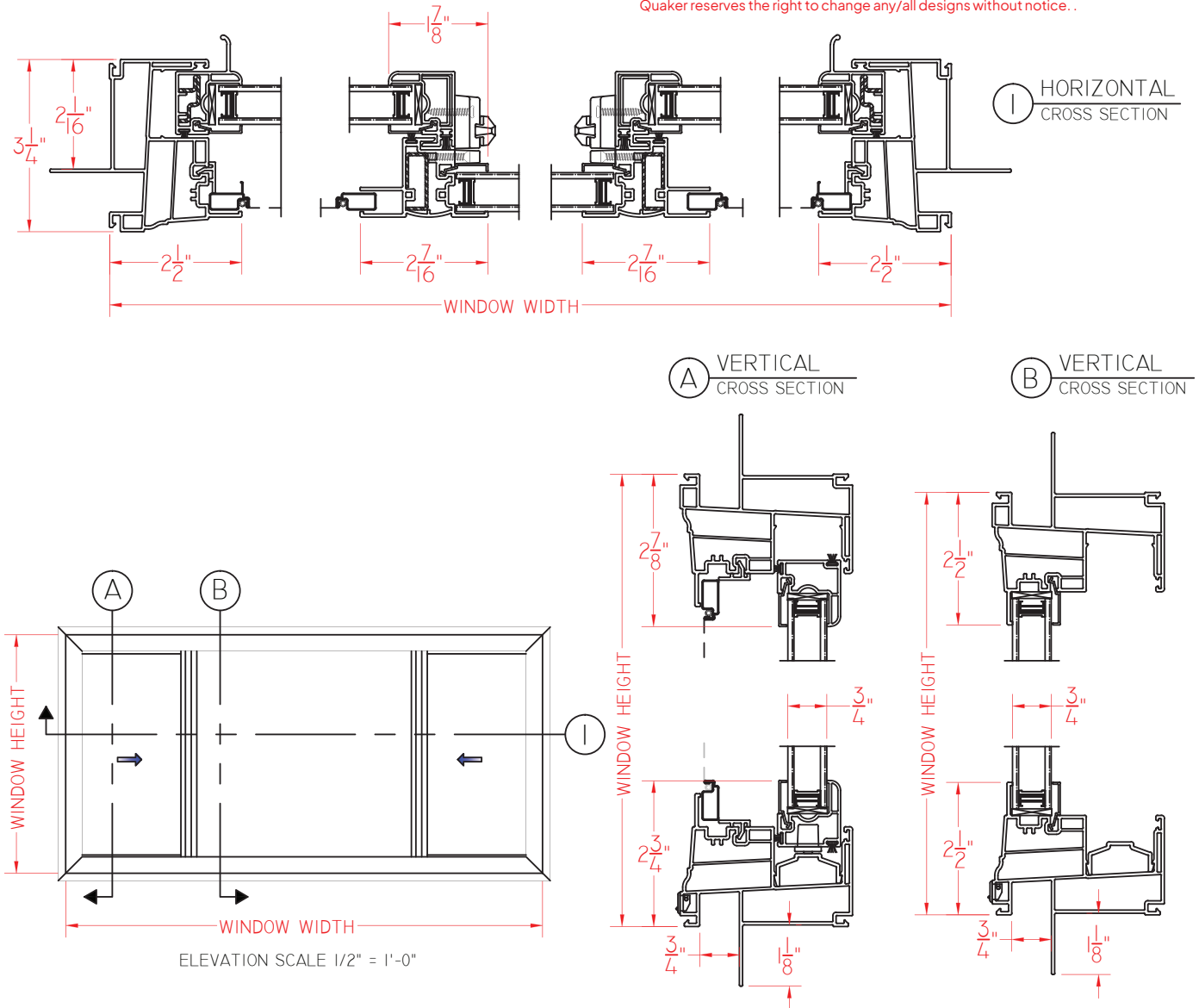
Our products are tested to the standards of and certified by some of the foremost organizations in the fenestration industry.





## V250 Series End Vent Horizontal Slider

This document contains confidential and proprietary information intended for the private use of Quaker.  
© 2016 Quaker Window Products Co., Inc. All rights reserved.  
Quaker reserves the right to change any/all designs without notice.



SCALE 1:3

Our products are tested to the standards of and certified by some of the foremost organizations in the fenestration industry.

