

M700 Series 3 1/4" Frame Depth Casement (Project-Out)

M700 Series Casement (Project-Out)

Features

- ◇ **Material**
 - Extruded Aluminum
- ◇ **Commercial Framing System**
 - 3 1/4" main frame
 - Sealable corner keys
 - Crimp/Screw connections
 - 0.094" wall thickness of interior and exterior walls, 0.070" wall thickness elsewhere
- ◇ **Enhanced Design**
 - Azo-braided channel receives Azon pour and debridge thermal break which is 1/2" wide in all main frame and vent rail extrusions
 - Clean squared edges
- ◇ **Integral Nailing Fin**
- ◇ **Glazing**
 - Impact-rated insulating glass
- ◇ **Hardware**
 - Heavy-commercial Truth Contour™ locking system (Crank-out only)
 - Low profile cam handle (Push-out only)
 - Crank-out available (4-Bar hinges or butt hinges)
 - Push-out available (4-Bar hinges)
- ◇ **Anchorage Methods**
 - Nailing Fin
 - Trim/Clips
- ◇ **Screen**
 - Standard screens (Crank-out only)
- ◇ **Meets ADA Requirements** (ADA Handle Required, Crank-out only)

Performance

- ◇ Structural & Thermal (test reports or thermal simulations available upon request)

Model	Casement (Project-Out)
Test Size	36" x 84"
NAFS Rating	AW-70
Structural Load P.S.F.	105
Air Infiltration (cfm/ft²)	<0.30
Water (No Penetration) P.S.F.	15
U-Value (ranges based on multiple Low-E/Argon combinations)	
SHGC (ranges based on multiple Low-E/Argon combinations)	
Missile Level	Level D
Wind Zone	Zone 4

Due to periodic re-certification requirements, result shown may vary.

Options

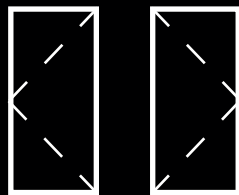
- ◇ **Available Configurations**
 - Project-out Casement
 - Push-out or Crank-out (Left or Right)
- ◇ **Muntin Choices**
 - Internal or simulated divided lites available
- ◇ **Limited travel hardware**
- ◇ **Glazing**
 - Multiple Low-E and argon glazing choices
 - Capillary tubes
 - Wide variety of glazing, tinting and thickness options
- ◇ **Panning & Trim Choices**
 - Wide variety of panning, receptor and trim available

Benefits

- ◇ Meets ASTM 1886 (Large Missile Impact testing)
- ◇ The capacity to match exterior colors for unique project facades
- ◇ The ability to facilitate large sizes for taller and wider window openings
- ◇ Modern appearance merged with superior structural integrity

Our products are tested to the standards of and certified by some of the foremost organizations in the fenestration industry.



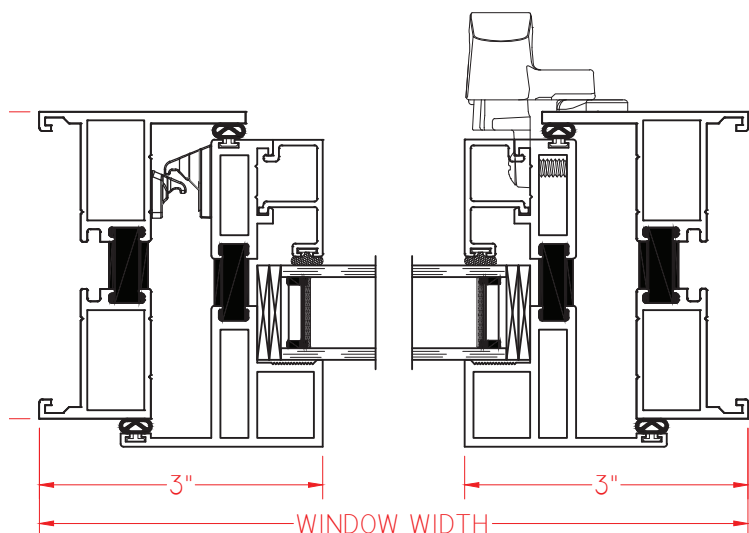


M700 Series 3 1/4" Frame Depth Casement (Project-Out)

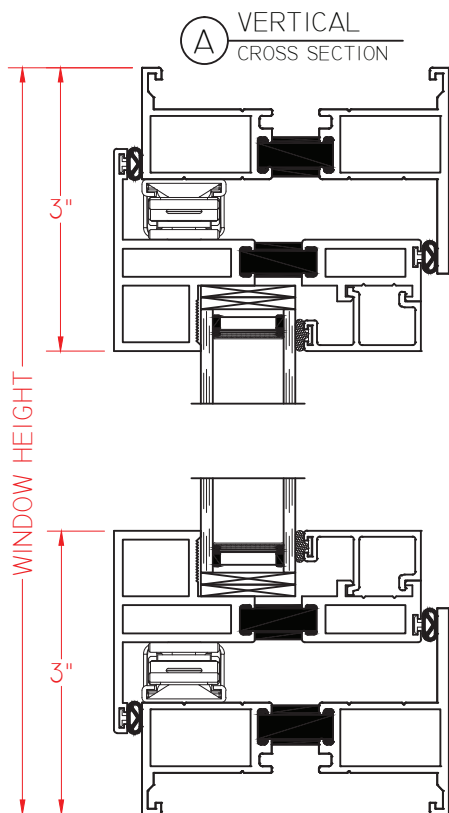
Shown with
Push Out
hardware

M700 Series Casement (Project-Out)

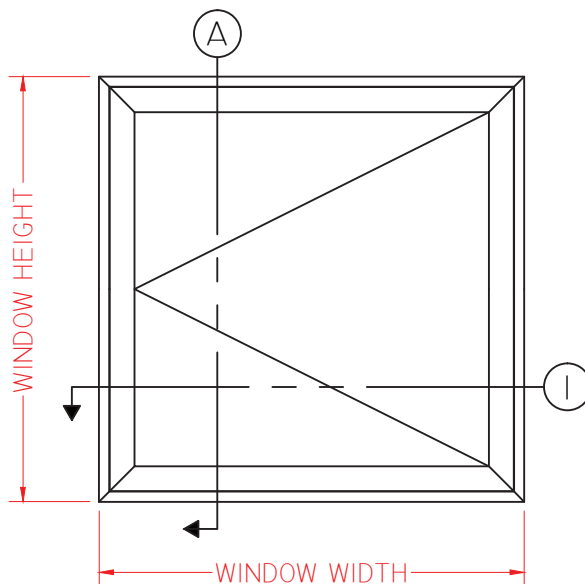
This document contains confidential and proprietary information intended for the private use of Quaker.
© 2019 Quaker Window Products Co., Inc. All rights reserved.
Quaker reserves the right to change any/all designs without notice.



① HORIZONTAL
CROSS SECTION



Ⓐ VERTICAL
CROSS SECTION

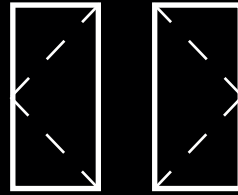


ELEVATION SCALE 3/4" = 1'-0"

SCALE 1:2

Our products are tested to the standards of and certified by some of the foremost organizations in the fenestration industry.



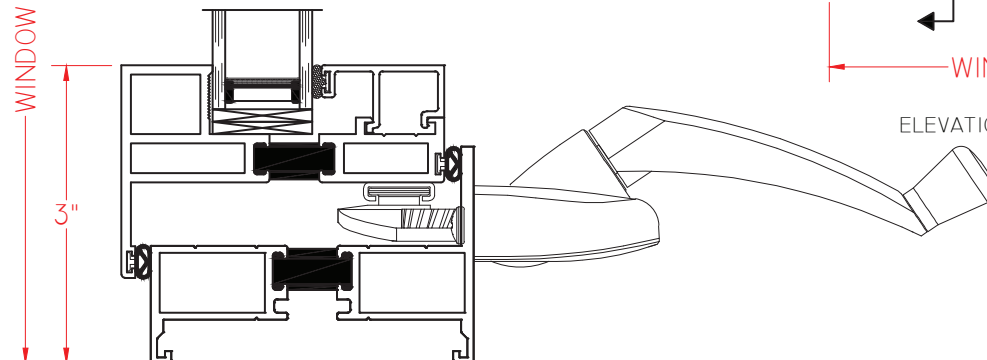
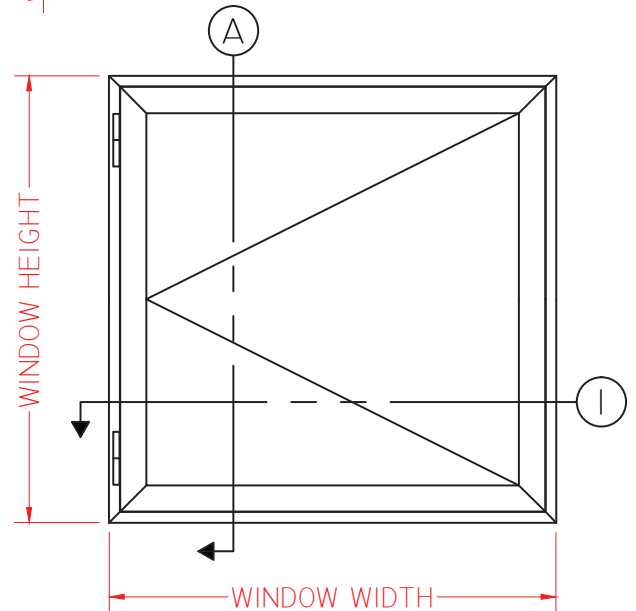
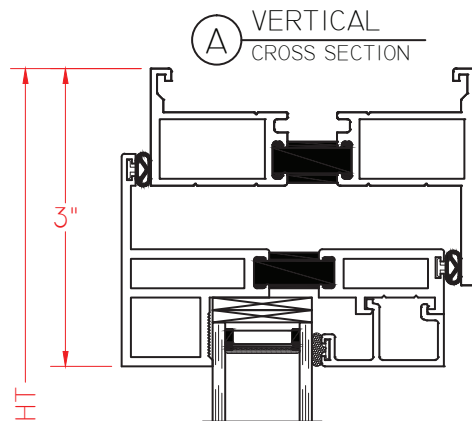
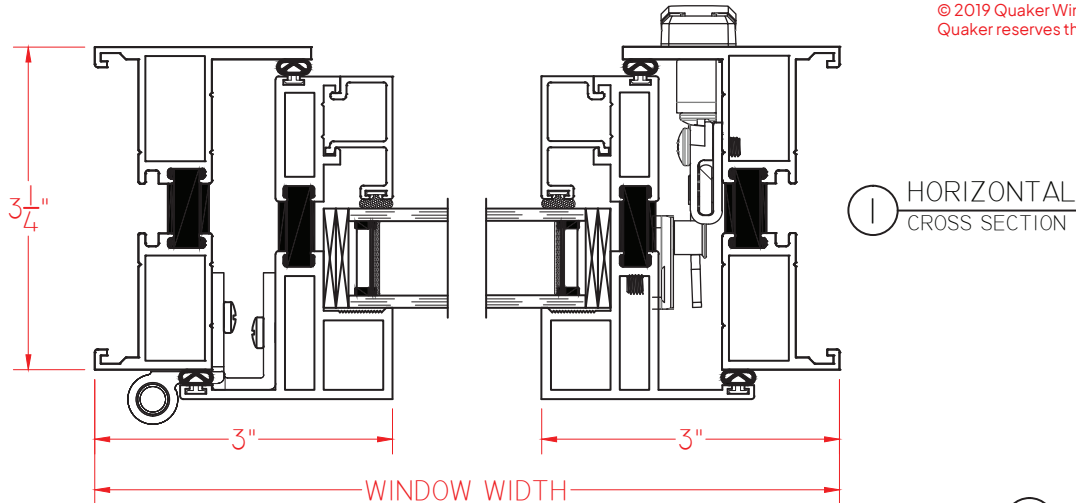


M700 Series 3 1/4" Frame Depth Casement (Project-Out)

M700 Series Casement (Project-Out)

Shown with
Roto
hardware

This document contains confidential and proprietary information intended for the private use of Quaker.
© 2019 Quaker Window Products Co., Inc. All rights reserved.
Quaker reserves the right to change any/all designs without notice.



SCALE 1:2

Our products are tested to the standards of and certified by some of the foremost organizations in the fenestration industry.

