

W700/W705 Series 5 7/8" Overall Frame Depth Casement (Project-Out)

W700/W705 Series Casement (Picture Window)

Features

- ◇ **Material**
 - Extruded Aluminum (Exterior)
 - Pine Wood (Interior)
- ◇ **Framing System**
 - Patented OptiCore Technology
 - Architectural grade aluminum exterior
 - Dual Euro-Groove frame system
 - 5 7/8" overall frame depth (4 9/16" from fin to interior)
- ◇ **Enhanced Design**
 - Azo-Core Thermal Barrier System for reduced thermal conductivity and increased energy-efficiency
 - Modern, squared frame glazing (W700 Series) or Traditional/Historic beveled frame glazing (W705 Series)
- ◇ **Glazing**
 - Impact-rated glazing package
 - Dual-sealed Warm Edge Super Spacer system
- ◇ **Hardware**
 - Heavy-commercial Amesbury/Truth lock and crank-out system
- ◇ **Anchorage Methods**
 - Integral Nailing Fin
 - Trim/Clips
- ◇ **Screen**
 - Easily removable FlexScreen system

Options

- ◇ **Available Configurations**
 - Project-out Casement (Left or Right)
- ◇ **Muntin Choices**
 - Internal or simulated divided lites available
- ◇ **Hardware and Screen**
 - ADA Hardware
 - Limited travel hardware
 - Retractable screen systems
- ◇ **Glazing**
 - Multiple Low-E and argon glazing choices
 - Capillary tubes
 - Wide variety of tinting and pane thickness options
- ◇ **Panning & Trim Choices**
 - Wide variety of panning, receptor and trim available

Benefits

- ◇ Meets ASTM 1886 (Large Missile Impact testing)
- ◇ Capacity to match exterior colors for unique project facades
- ◇ Maximum sizing affords the facilitation of large sizes for taller and wider window openings
- ◇ Dynamic thermal performance for a wood clad window

Performance

- ◇ Structural & Thermal (test reports available upon request)

| Model | Casement (Project-Out) |
|---|---------------------------|
| NAFS Rating | AW-70 |
| Test Size | 42" x 84" (Maximum) |
| Design Pressure (P.S.F.) | 70 |
| Air Infiltration | <0.10 |
| Water Resistance (P.S.F.) | |
| CR (Condensation Resistance) | |
| U-Value (ranges based on multiple Low-E/Argon combinations) | |
| SHGC (ranges based on multiple Low-E/Argon combinations) | |
| OITC/STC | |
| Missile Level | D |
| Wind Zone | 3 |

Operating Force (per ASTM E2068): 13 N 3 lbf
(Initiate motion and Maintain Motion)

Due to periodic re-certification requirements, result shown may vary.

Our products are tested to the standards of and certified by some of the foremost organizations in the fenestration industry.



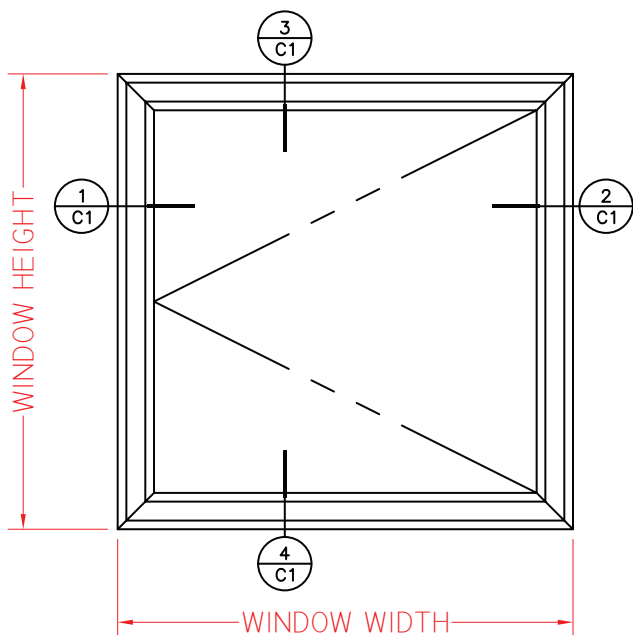
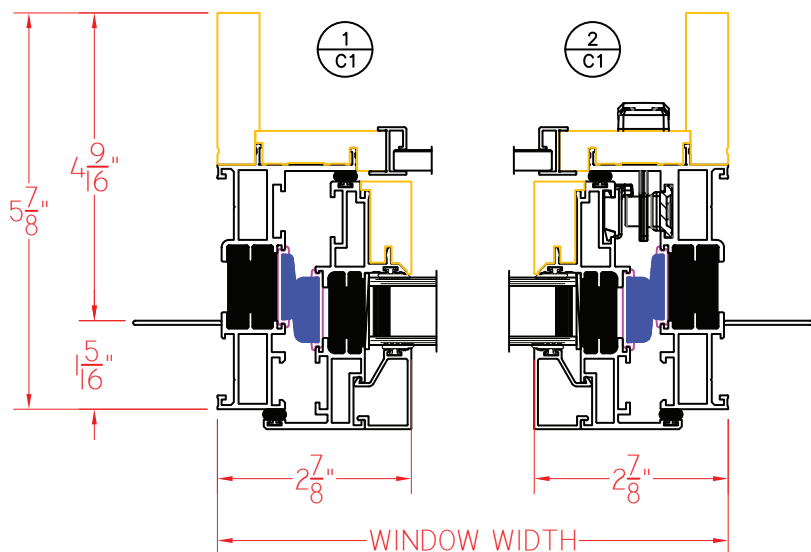


W700 Series 5 7/8" Overall Frame Depth Casement (Project-Out)

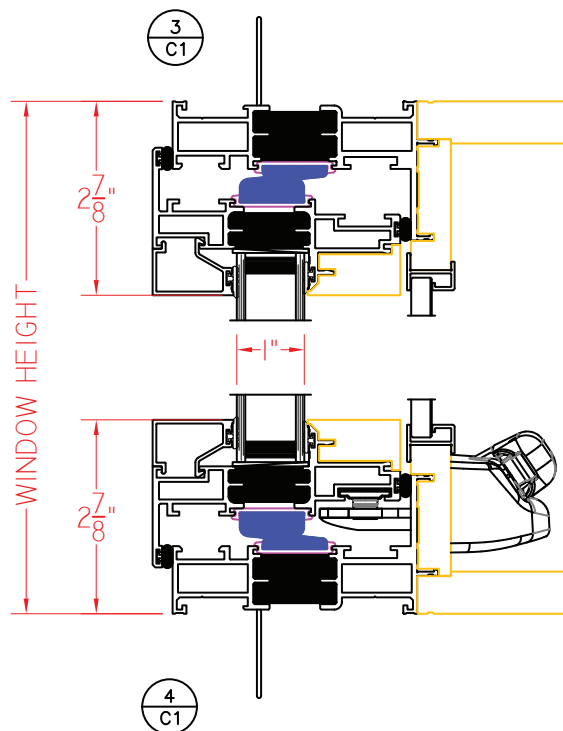
W700 Series Casement (Picture Window)

Shown With Nailing
Fin and Square
Glazing Stops

This document contains confidential and proprietary information intended for the private use of Quaker.
© 2019 Quaker Window Products Co., INC. All rights reserved.
Quaker reserves the right to change any/all designs without notice.



ELEVATION SCALE 3/4" = 1'-0"



Our products are tested to the standards of and certified by some of the foremost organizations in the fenestration industry.



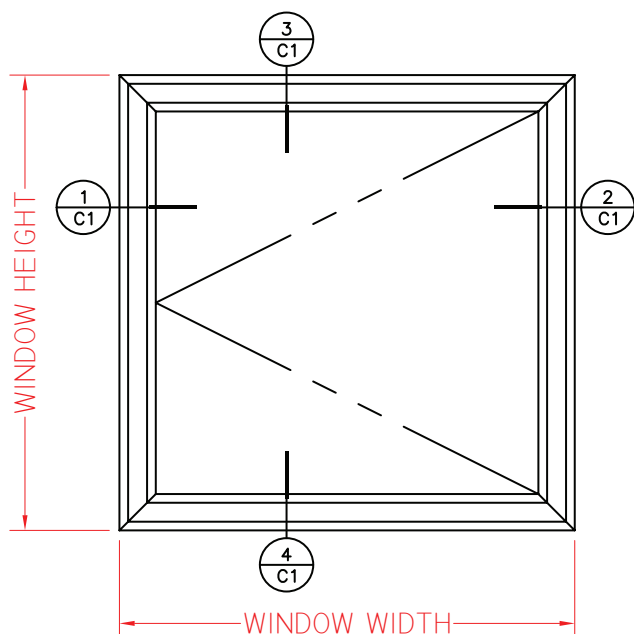
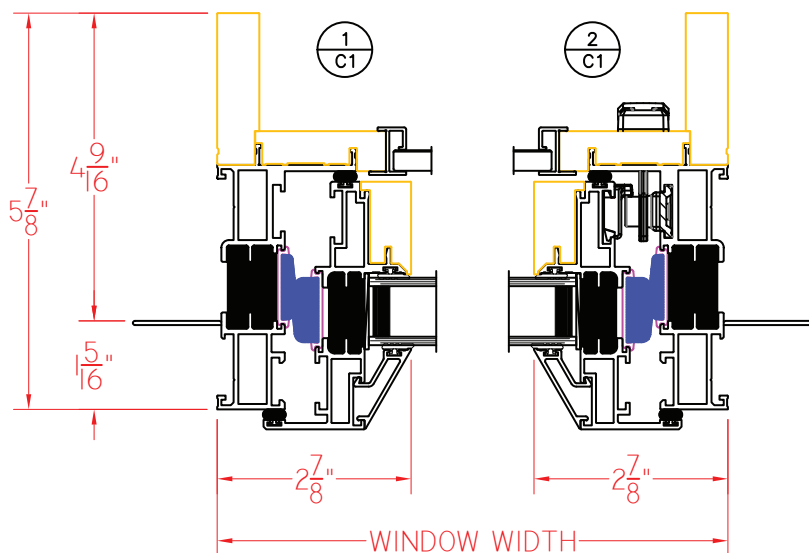


W705 Series 5 7/8" Overall Frame Depth Casement (Project-Out)

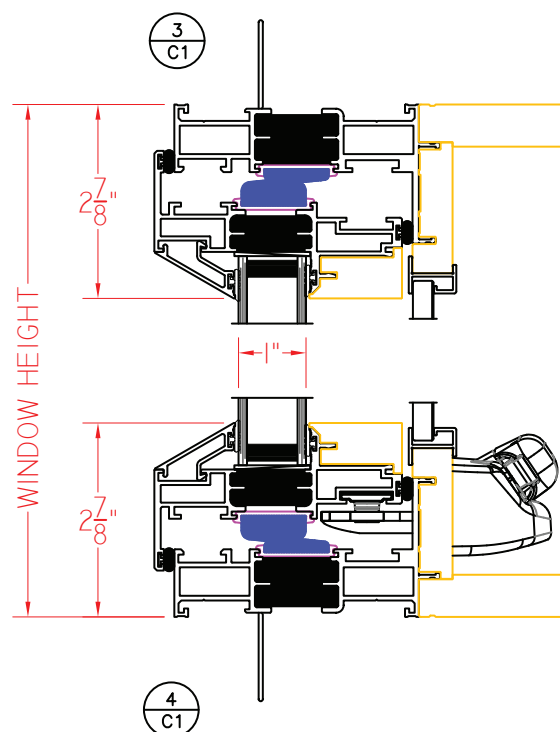
W705 Series Casement (Project-Out)

Shown With Nailing Fin,
Roto Hardware and
Bevel Glazing Stops

This document contains confidential and proprietary information intended for the private use of Quaker.
© 2019 Quaker Window Products Co., INC. All rights reserved.
Quaker reserves the right to change any/all designs without notice.



ELEVATION SCALE 3/4" = 1'-0"



Our products are tested to the standards of and certified by some of the foremost organizations in the fenestration industry.

