

## W700/W705 Series 5 7/8" Overall Frame Depth Fixed (Picture Window)

### W700/W705 Series Fixed (Picture Window)

#### Features

- ◇ **Material**
  - Extruded Aluminum (Exterior)
  - Pine Wood (Interior)
- ◇ **Framing System**
  - Patented OptiCore Technology
  - Architectural grade aluminum exterior
  - Dual Euro-Groove frame system
  - 5 7/8" Overall Frame Depth (4 9/16" from fin to interior)
- ◇ **Enhanced Design**
  - Azo-Core Thermal Barrier System for reduced thermal-conductivity and increased energy-efficiency
  - Modern, squared frame glazing (W700 Series) or Traditional/Historic beveled frame glazing (W705 Series)
- ◇ **Anchorage Methods**
  - Integral Nailing Fin
  - Trim/Clips
  - Subframe
- ◇ **Glazing**
  - Impact-rated glazing package
  - Dual-sealed Warm Edge Super Spacer system

#### Options

- ◇ **Available Configurations**
  - Fixed
- ◇ **Muntin Choices**
  - Internal or simulated divided lites available
- ◇ **Glazing**
  - Multiple Low-E and argon glazing choices
  - Capillary tubes
  - Wide variety of tinting and pane thickness options
- ◇ **Panning & Trim Choices**
  - Wide variety of panning, receptor and trim available

#### Benefits

- ◇ Meets ASTM 1886 (Large Missile Impact testing)
- ◇ Capacity to match exterior colors for unique project facades
- ◇ Maximum sizing affords the facilitation of large sizes for taller and wider window openings
- ◇ Dynamic thermal performance for a wood clad window

#### Performance

- ◇ Structural & Thermal (test reports available upon request)

Model	Fixed (Picture Window)
NAFS Rating	AW-70
Test Size	60" x 96"
Design Pressure (P.S.F.)	70
Air Infiltration (cfm/ft <sup>2</sup> )	<0.10
Water Resistance (P.S.F.)	
CR (Condensation Resistance)	
U-Value (ranges based on multiple Low-E/Argon combinations)	
SHGC (ranges based on multiple Low-E/Argon combinations)	
OITC/STC	
Missile Level	D
Wind Zone	3

Due to periodic re-certification requirements, result shown may vary.

Our products are tested to the standards of and certified by some of the foremost organizations in the fenestration industry.



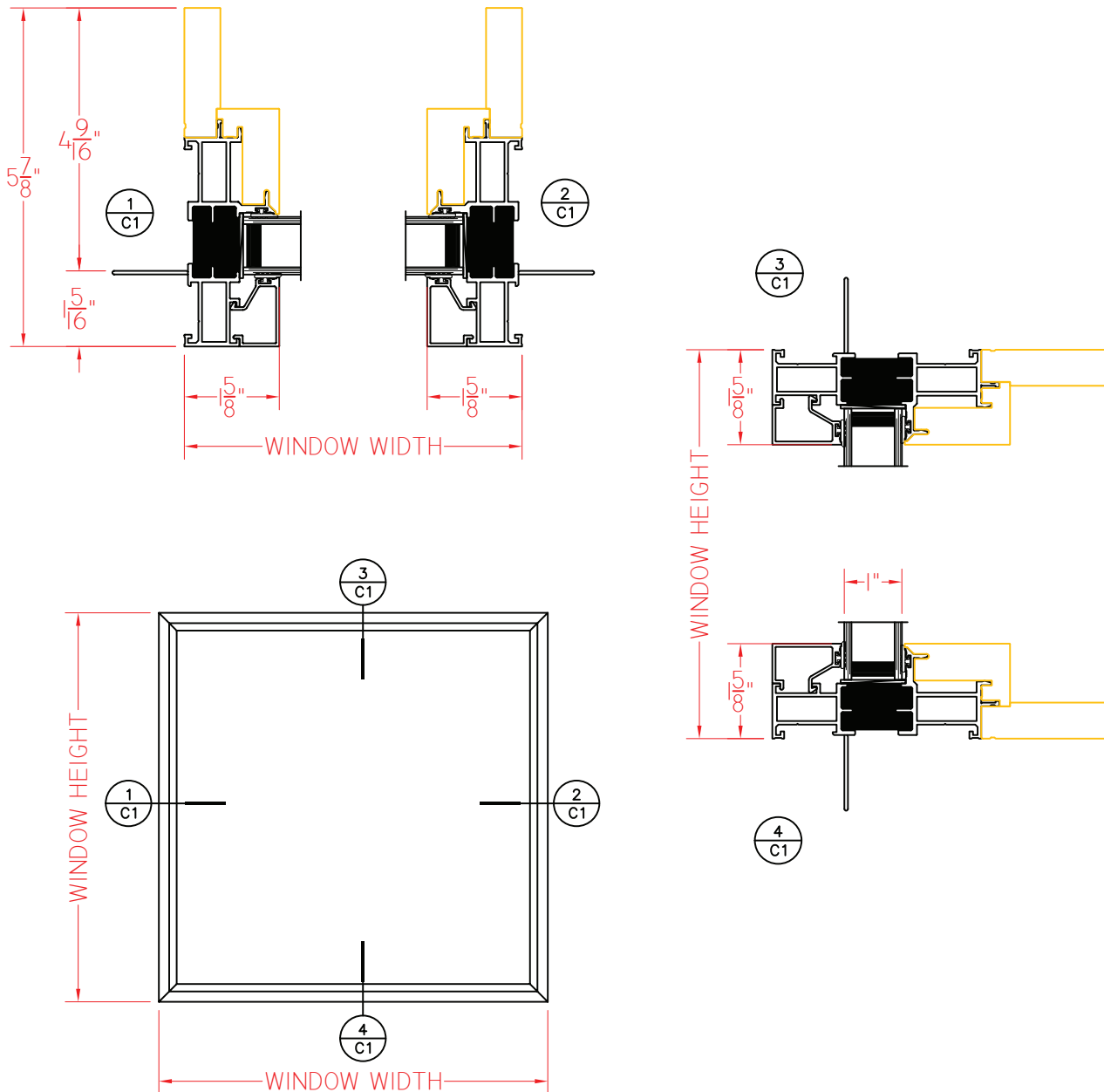


## W700 Series 5 7/8" Overall Frame Depth Fixed (Picture Window)

### W700 Series Fixed (Picture Window)

Shown With Nailing Fin and  
Squared Glazing Stops

This document contains confidential and proprietary information  
intended for the private use of Quaker.  
© 2019 Quaker Window Products Co., INC. All rights reserved.  
Quaker reserves the right to change any/all designs without notice.



ELEVATION SCALE 3/4" = 1'-0"

SCALE 1:3

Our products are tested to the standards of and  
certified by some of the foremost organizations  
in the fenestration industry.



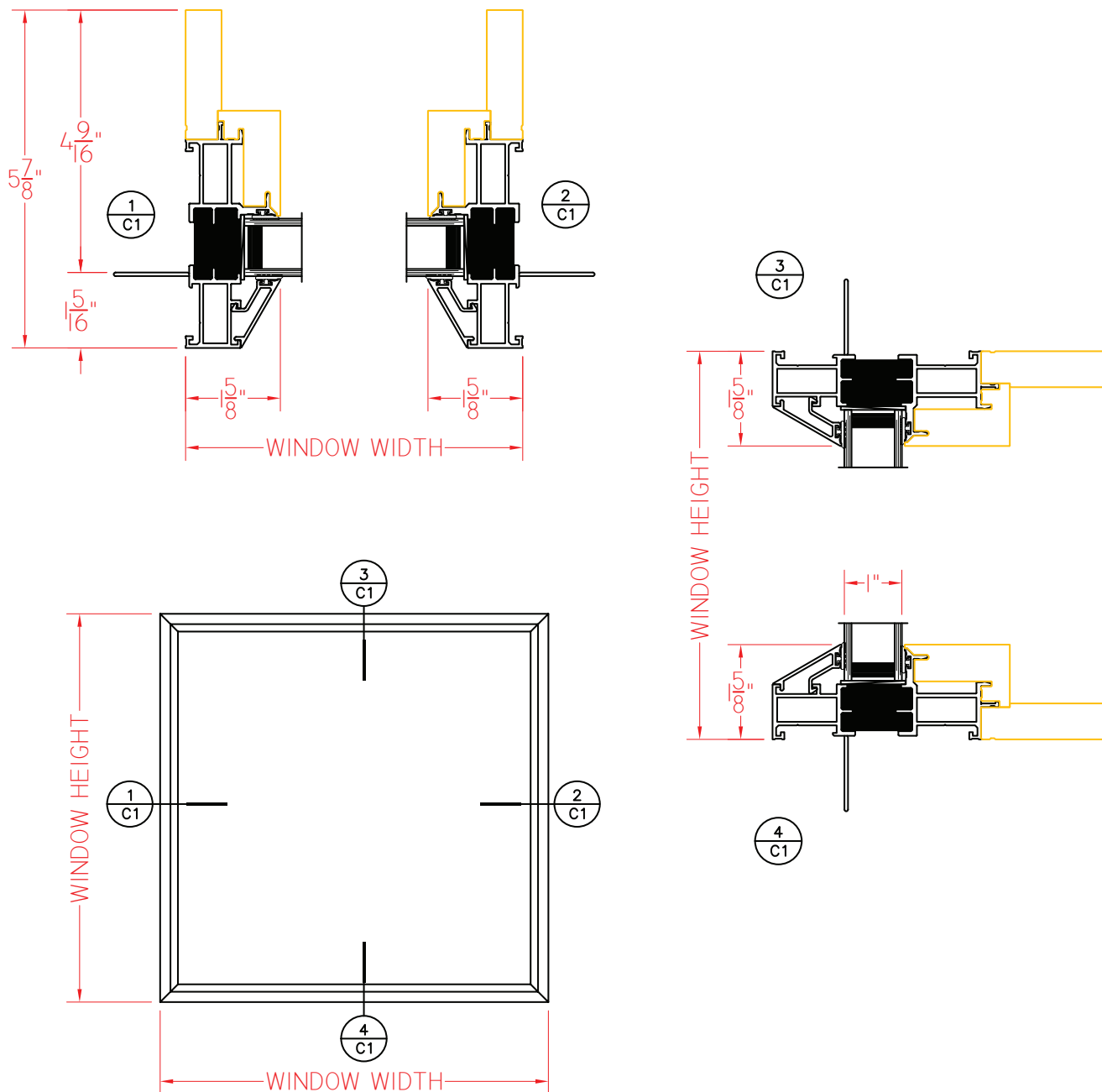


# W705 Series 5 7/8" Overall Frame Depth Fixed (Picture Window)

## W705 Series Fixed (Picture Window)

Shown With Nailing Fin and  
Beveled Glazing Stops

This document contains confidential and proprietary information intended for the private use of Quaker.  
© 2019 Quaker Window Products Co., INC. All rights reserved.  
Quaker reserves the right to change any/all designs without notice.



ELEVATION SCALE 3/4" = 1'-0"

Our products are tested to the standards of and certified by some of the foremost organizations in the fenestration industry.



WINDOW & DOOR  
MANUFACTURERS ASSOCIATION  
**WDMA**  
M E M B E R

SCALE 1:3