



# M600

COMMERCIAL ALUMINUM SERIES

Casement | Project-Out | Fixed | Sliding Door | Terrace Door



*Credit: Jason Keen Photography*

**Architectural Window & Door Solutions  
for the Modern Building World**

[www.QuakerCommercialWindows.com](http://www.QuakerCommercialWindows.com)

# M600

COMMERCIAL ALUMINUM SERIES

## The Modern Solution

Building in the 21st century is more complex than ever. In fact, it's no longer just building. It's harmonizing. It's modernizing. It's stylizing. It's building for today with the future in mind. The windows and doors that will help you do that are right here: Quaker's M600 Series -- the modern solution.

### Engineered for Strength

- Life cycle tested to achieve NAFS certified AW-ratings
- Heavy-gauge aluminum allows for taller/wider sizes
- Impact Tested and FBC-approved models

### Designed for Flexibility

- Integral nailing flange for new construction
- Multiple retrofit installation accessories
- Structural mull systems
- Interior and exterior trim packages
- Any color in the rainbow is available with our custom color capabilities

### Built for Long-Term Durability

- Quaker powder coat paint finishes resist fading and chipping much better than liquid paint alternatives
- Only high-quality components found throughout all models
- One of the industry's best commercial warranties

### Developed for Optimal Thermal Performance

- Effective glass choices for every part of the U.S.
- Standard 1" glass pocket with optional 1 3/8" to support and strengthen thermal performance
- Pour-and-Debridge thermal barriers

Saint Teresa de Calcutta Villa  
San Diego, CA  
Developer: 14th & Commercial CIC, LP  
Contractor: Level 10 Construction LP  
Architect: Joseph Wong Design Associates  
Glazing Contractor: Lunstrum Windows  
LEED: Gold



Credit: Joseph Wong Design Associates / jwdainc.com



[www.QuakerCommercialWindows.com](http://www.QuakerCommercialWindows.com)

# M600

COMMERCIAL ALUMINUM SERIES

## Selection Guide

Model	Frame Depth	Structural Test Rating	Test Size	Design Pressure	Air Infiltration	Water Resistance	U-Value Range <sup>#</sup>	SHGC Range <sup>#</sup>	STC Range <sup>x</sup>	OITC Range <sup>x</sup>
Casement	3 1/4"	AW-PG70	36" x 60"	70	<0.10	15	0.32-0.57	0.11-0.54	29-43	23-34
Project-Out	3 1/4"	AW-PG70	60" x 36"	70	<0.10	15	0.33-0.59	0.11-0.54	41-43	33-34
Fixed	3 1/4"	AW-PG70	60" x 60"	70	<0.10	12	0.18-0.50	0.13-0.68	30-41	27-33
Terrace Door (inswing)	4 1/2"	AW-50	48" x 96"	50		10	0.33-0.58	0.09-0.52	34-38	30-33
Terrace Door (outswing)	4 1/2"	AW-70	39" x 95"	70		12	0.33-0.57	0.09-0.52	34-38	30-33
Terrace Door (outswing w/ADA sill)	4 1/2"	AW-50	48" x 96"	50		12	0.36-0.58	0.09-0.48	34-38	30-33
Sliding Door (M600)	5"	AW-50	123" x 96"	50		12	0.36-0.56	0.14-0.59		
Sliding Door (M300)	5"	CW-50	95" x 83"	50		7.5	0.35-0.40	0.14-0.50		

<sup>#</sup> -U-Value and SHGC ranges are NFRC certified based on I.G. combinations incorporating some or all the following: Low-E glass, clear glass, argon gas and/or air fill, and grids

<sup>x</sup> -STC and OITC Ranges based on multiple I.G. combinations

All ratings listed are NAFS certified. Periodic re-certification testing is required thus data shown may vary slightly.



Legacy 202  
Champaign, IL  
Contractor: Wells & Wells  
Architect: Mode 3 Architecture  
Comm. Window Dealer: LS Building

Credit: The Daily Illini / dailyillini.com

800-347-0438



# M600

COMMERCIAL ALUMINUM SERIES

## Products

### Casement

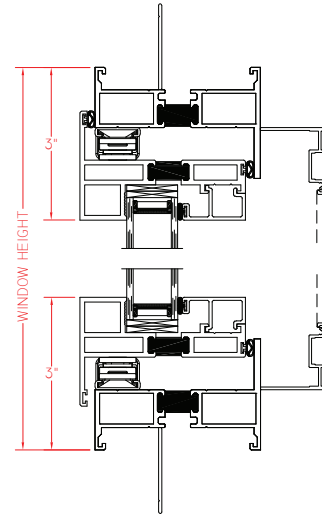
- AW-70 Rating
- Architectural grade aluminum
- Pour and debridge thermal barrier system
- 1" I.G. with warm-edge spacer
- Roto and Cam-Handle hardware
- Clean corner joints for greater aesthetic appeal
- Heavy-duty, sealed corner key construction eliminates sag
- With or without Integral nailing fin
- Single-frame combination capability
- Impact and Florida Building approved (M700)
- Standard and custom sizing for all models

Riva Row  
 The Woodlands, TX  
 Developer: The Woodland Development Mgmt., LLC  
 Contractor: Hoar Construction  
 Architect: Allford, Hall, Monaghan, Morris  
 Glazing Contractor: Ranger Specialized Glass

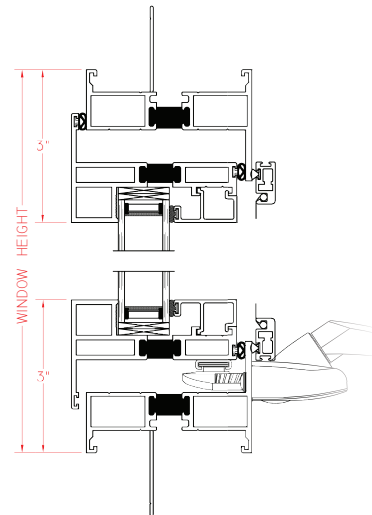


Credit: The Woodlands / thewoodlandsarea.org

M600 Push-out Casement  
 shown with nail fin



M600 Roto Casement  
 shown with nail fin



# M600

COMMERCIAL ALUMINUM SERIES

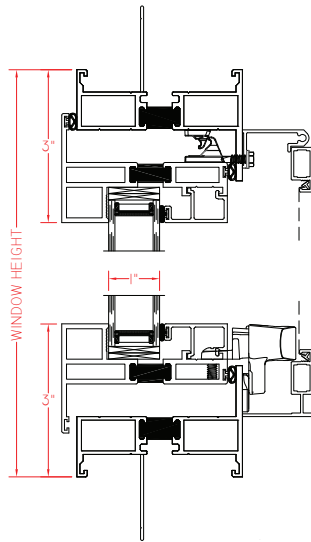
## Products

### Project-Out

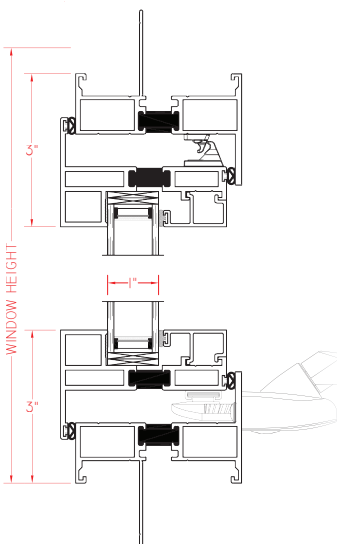
- AW-70 Ratings
- Architectural grade aluminum
- Pour and debridge thermal barrier system
- 1" I.G. with warm-edge spacer
- Roto and Cam-Handle hardware
- Clean corner joints for greater aesthetic appeal

- Heavy-duty, sealed corner key construction eliminates sag
- With or without Integral nailing fin
- Single-frame combination capability
- Impact and Florida Building approved (M700)
- Standard and custom sizing for all models

M600 Push-Out Project-Out  
shown with nail fin



M600 Roto Project-Out  
shown with nail fin



Moontower  
Phoenix, AZ  
Developer: Lincoln Ventures LLC  
Contractor: JE Dunn  
Architect: Shepley Bulfinch  
Glazing Contractor: Ever-Ready Glass  
LEED: Silver

Credit: Shepley Bulfinch

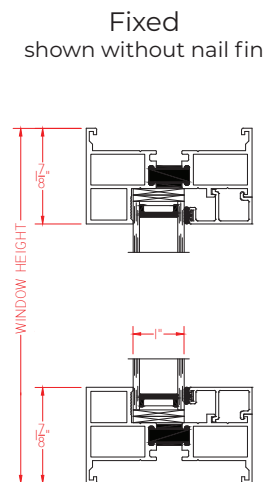
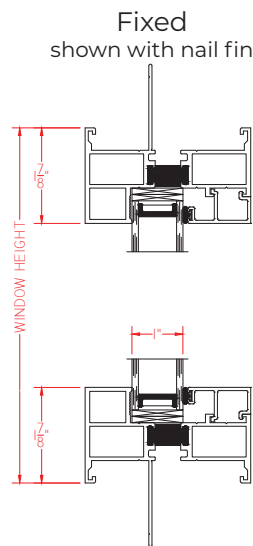
# M600

COMMERCIAL ALUMINUM SERIES

## Products

### Fixed

- AW-70 Rating
- Architectural grade aluminum
- Pour and debridge thermal barrier system
- 1" I.G. with warm-edge spacer
- With or without Integral nailing fin
- Single-frame combination capability
- Heavy-duty, sealed corner key construction eliminates sag
- Clean corner joints for greater aesthetic appeal
- Geometric shapes
- Impact and Florida Building approved (M700)
- Standard and custom sizing for all models



Dollywood Heartsong Lodge & Resort  
Pigeon Forge, TN  
Developer: The Dollywood Company  
Contractor: D & S Builders LLC  
Architect: NELSON Worldwide



Credit: [www.dollywood.com](http://www.dollywood.com)



# M600

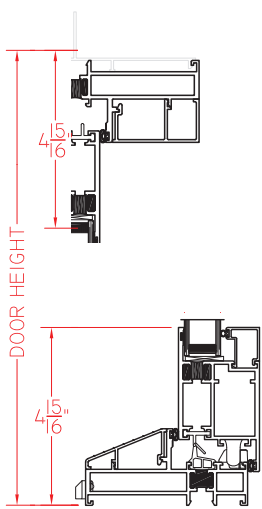
COMMERCIAL ALUMINUM SERIES

## Products

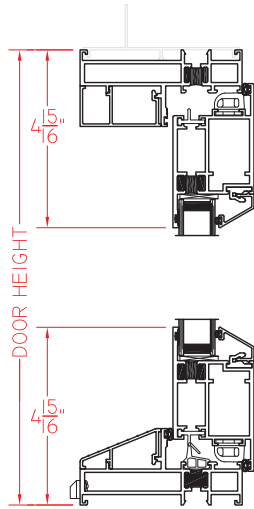
### Terrace Doors

- AW-50/AW-70 Ratings
- Architectural grade aluminum
- Pour-and-debridge thermal barrier
- 1" I.G. with warm-edge spacer
- Inswing or Outswing operation
- Concealed or barrel hinges
- Multi-point hardware standard
- Single-point hardware optional
- Keyed or unkeyed hardware option
- Heavy-duty corner keys eliminate sag
- Clean corner joints for greater aesthetic appeal
- Impact and Florida Building approved (M700)
- Optional ADA sill
- With or without nailing fin
- Standard and custom sizing
- Optional Fixed Transom and Sidelite

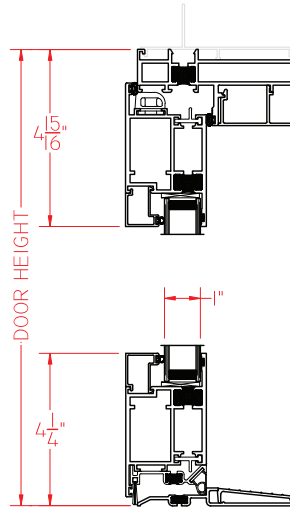
M600 Inswing  
shown w/nail fin, standard sill & square exterior glazing profile



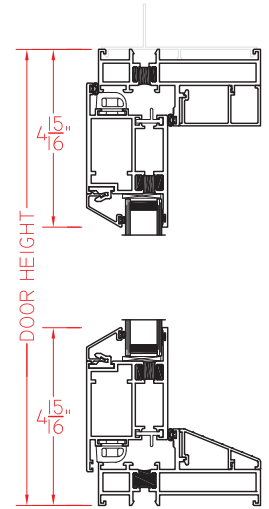
M605 Inswing  
shown w/nail fin, standard sill & beveled exterior glazing profile



M600 Outswing  
shown w/nail fin, optional ADA sill & square exterior glazing profile



M605 Outswing  
shown w/nail fin, standard sill & beveled exterior glazing profile



The Tower at Henry  
Philadelphia, PA  
Developer: M & M Partners  
Contractor: Axis Construction Management LLC  
Architect: LRK Architects  
Comm. Window Dealer: Architectural Window

Render Credit: The Tower at Henry / towerathenry.com

# M600

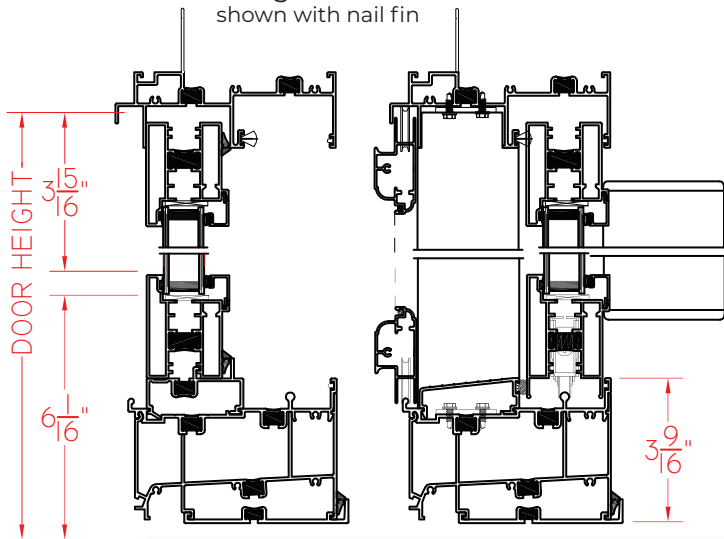
COMMERCIAL ALUMINUM SERIES

## Products

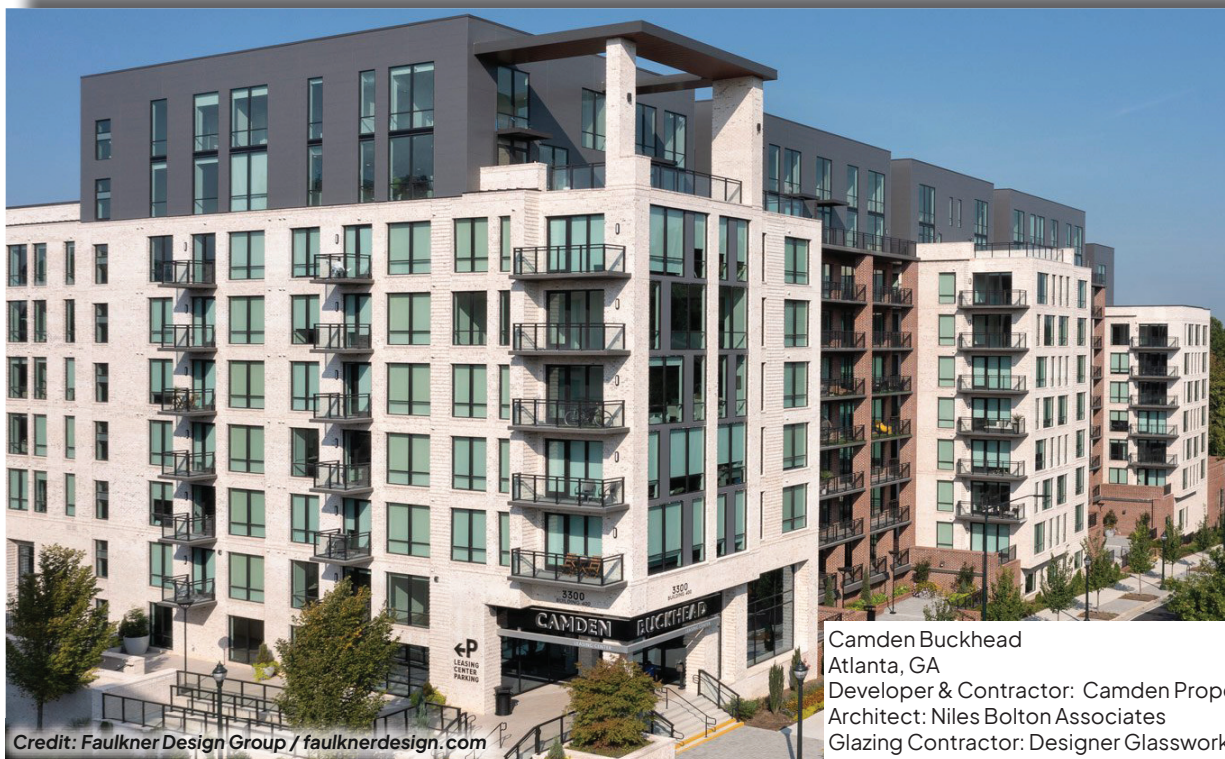
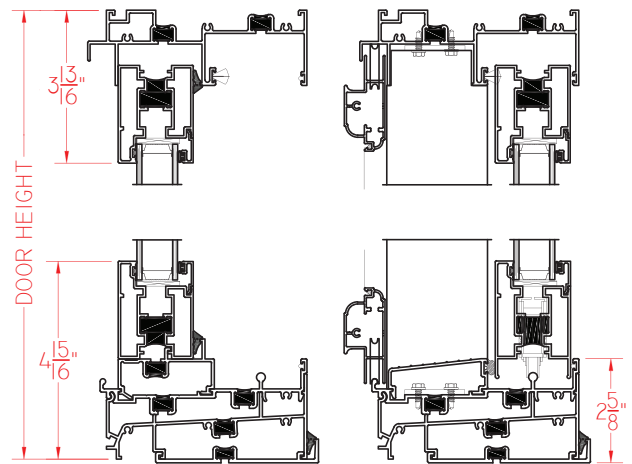
### Sliding Doors

- Up to AW-50 Ratings
- Architectural grade aluminum
- Pour-and-debridge thermal barrier
- 1" I.G. with warm-edge spacer
- 2-, 3- or 4-panel operation
- Steel rollers for smooth operation
- 3 3/8" threshold (M600)
- Optional 2 5/8" threshold (M300)
- Multiple handle choices
- Keyed or unkeyed hardware option
- Clean corner joints for greater aesthetic appeal
- Heavy-duty corner keys
- Impact and Florida Building approved (M700)
- With or without nailing fin
- Standard and custom sizing
- Fixed Transom and Sidelite

M600 Sliding Door w/ 3 3/16" sill  
shown with nail fin



M300 Sliding Door w/ 2 5/8" sill  
shown with no nail fin



Credit: Faulkner Design Group / [faulknerdesign.com](http://faulknerdesign.com)

Camden Buckhead  
Atlanta, GA  
Developer & Contractor: Camden Property Trust  
Architect: Niles Bolton Associates  
Glazing Contractor: Designer Glassworks



[www.QuakerCommercialWindows.com](http://www.QuakerCommercialWindows.com)

# M600

COMMERCIAL ALUMINUM SERIES

## Products



Union at San Antonio  
Austin, TX  
Developer: Greystar Development  
Contractor: Hensel Phelps Construction Co.  
Architect: Page/  
Glazing Contractor: Eastern Glass & Aluminum

Credit: Hensel Phelps Construction / [henselphelps.com](http://henselphelps.com)

800-347-0438



# M600

COMMERCIAL ALUMINUM SERIES

## Colors & Finishes

Quaker makes it easy to get your color right with more than 40 "Quick Pick" powder-coat paint colors. If that's not enough, Quaker offers full custom color capabilities, meaning you can grab any color in the spectrum for your project.

**The Basics:** Nearly 30 color tones that never go out of style.

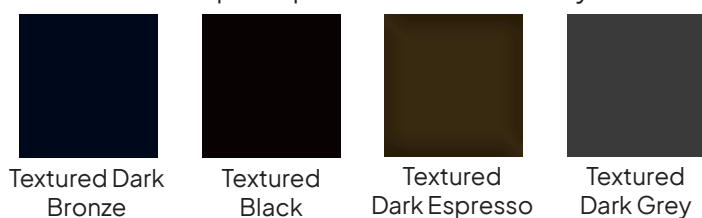


**Resembles:** Powder coat, paint finishes made to resemble an anodized look.



- Resembles painted finishes have double the warranty (10 years vs. 5 years for anodized)
- Shorter lead times as Quaker paints all aluminum lineals in-house while anodized must be outsourced.
- Better pricing across the board vs. anodized
- Consistent painted finish for each rail as opposed to the industry-accepted ranges that come with the anodizing process.

**Textured:** Unique depth and feel to elevate your color choice.



**Custom Colors:**

- Custom colors are a Quaker specialty.
- Our state-of-the-art, in-house painting facilities allow you to easily choose a custom color without incurring an exorbitant cost.
- From the purest white to the darkest black, any color is right at your fingertips.



# M600

COMMERCIAL ALUMINUM SERIES

## Options

### Colors & Finishes

#### Paint Finishes:

- Standard: High-performance 2604 Powder Coat finish (an FGIA specification)
- Upgrade: Max-performance 2605 Powder Coat finish\* (an FGIA specification)

*\*2605 finish not available for all colors*

#### Heat Reflective: Keeps aluminum window and door exteriors cooler by repelling excessive solar heat.

- Available with these colors: Black, Dark Bronze, Textured Black, Textured Dark Bronze, & Textured Dark Espresso
- Proven technology adapted to work with windows and doors
- Paint additive works much like Low-E works in glass
- Reduces the possibility of thermal heat transfer through windows and doors

#### Anodized:

Available by request if commercial anodized finishes are a must for your project.

- Quaker offers only Class I anodized finishes, the highest grade available for exterior usage and vastly superior to Class II anodized
- Seven Anodized colors ranging from clear to black

#### Paint & Finish Warranty:

- 10 year limited warranty on 2604 paint finish
- Up to 20 year limited warranty on 2605 paint finish
- 5 year limited warranty on Anodized finishes
- See complete warranty details at [QuakerCommercialWindows.com](http://QuakerCommercialWindows.com)

*Although every effort is made, the sample colors shown in this brochure may not perfectly reflect the actual paint color once it has been applied. For an exact color match, please contact Quaker.*

*Quaker Windows & Doors does not assume any responsibility for possible misrepresentations of our colors and reserves the right to add, remove or alter the color offerings and/or information shown here without notice.*



Midtown Plaza Apartments  
Kansas City, MO  
Developer: MTP1, LLC  
Contractor: Construction Tech LLC  
Architect: B & A Architecture, LLC  
Comm. Window Dealer: Sightline Windows

Credit: B+A Architecture / [baarchitecture.com](http://baarchitecture.com)

# M600

COMMERCIAL ALUMINUM SERIES

## Options

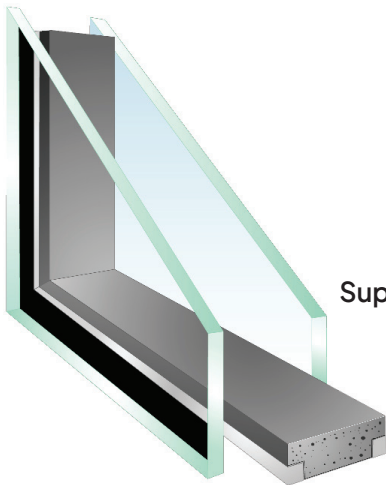
### Glass

#### Pane thickness

- $\frac{3}{32}$ "
- $\frac{1}{8}$ "
- $\frac{5}{32}$ "
- $\frac{3}{16}$ "
- $\frac{1}{4}$ "
- $\frac{5}{16}$ "

#### I.G. thickness

- 1" (Double pane)
- 1 $\frac{3}{8}$ " (Triple pane)



#### Glass Types

- Dual Silver Low-E
  - Triple Silver Low-E
  - Interior Pane Low-E
  - Tempered Safety Glass
  - Laminated
  - Bird Glass
  - Spandrel
  - Neat+™ Low Maintenance
  - Obscure (for privacy)
  - Tinted
- and many others

*Some limitations may apply based upon several variables including, but not limited to, the window/door series chosen and requested/required specifications.*

#### Super Spacer® Premium Enhanced

- Low conductivity
- Edge-seal durability
- High desiccant content for moisture absorption
- Superior argon gas retention
- Pleasing aesthetics
- Excellent condensation resistance
- Great impedance to ozone, UV light and oxidation
- Optimized energy savings



26th & Alcott  
Denver, CO  
Owner: GPAI Highlands, LLC  
Contractor: The Weitz Company  
Architects: OZ Architecture

Render Credit: OZ Architecture / ozarch.com

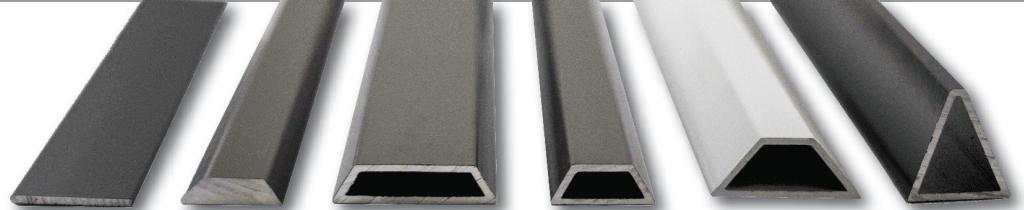
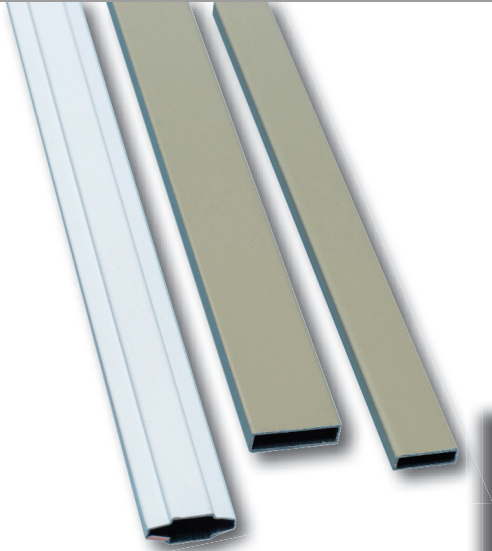


# M600

COMMERCIAL ALUMINUM SERIES

## Options

### Grids



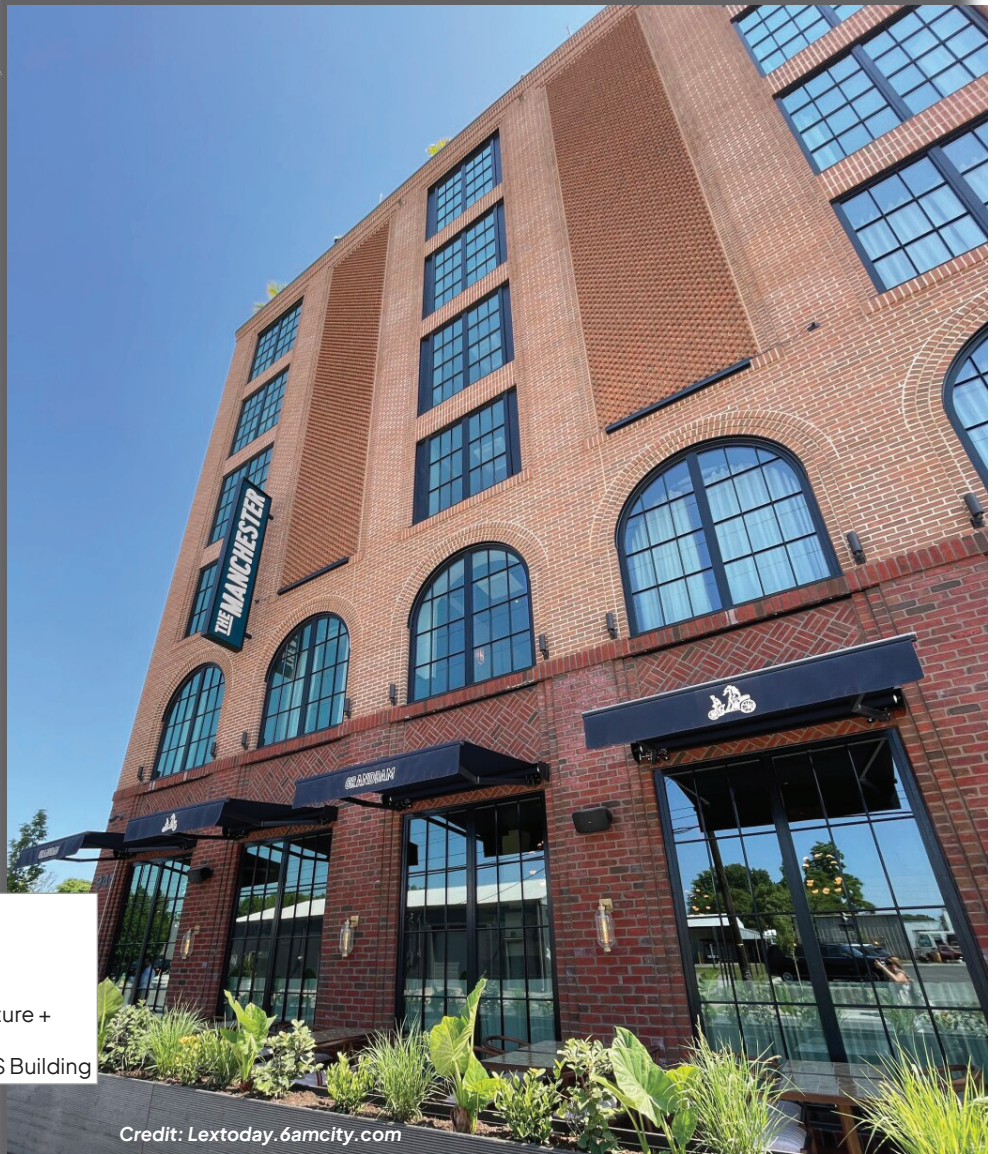
### Simulated Divided Lites

- Dozens of flat and raised profiles with numerous combinations available

*SDL profiles shown above are just a sampling of the many Quaker offers. Custom profiles available.*

### Grids Between the Glass

- Flat ( $\frac{5}{8}$ "
- Flat ( $\frac{3}{4}$ "
- Flat (1")
- Contoured ( $\frac{3}{4}$ "



The Manchester Hotel  
Lexington, KY  
Owner: Astana LLC  
Contractor: Wells and Wells  
Architects: Champlin Architecture +  
EOP Architects  
Comm. Window Distributor: LS Building

*Credit: Lextoday.6amcity.com*

# M600

COMMERCIAL ALUMINUM SERIES

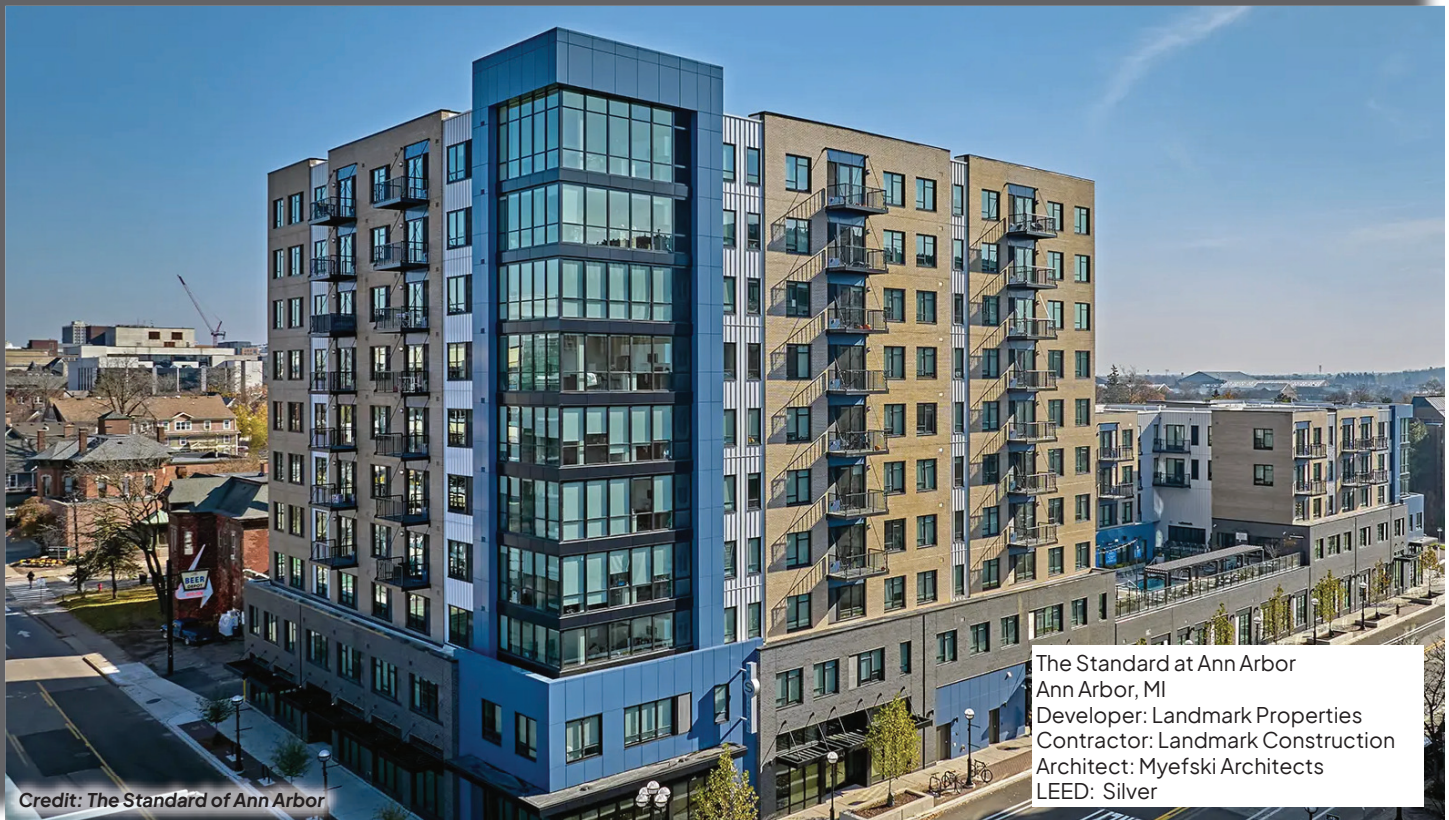
## Options

### Mulls

M600 Structural Mull Systems deliver confidence, whether you're stacking units or pairing them side-by-side. Or both.

- Vertical mulls - Up to 3" wide
- Horizontal mulls - 1" to 7" tall
- Post Mulls
- Mull Covers - up to 8" wide
- 120° Angle Mull

*Usage limitations may apply*



# M600

COMMERCIAL ALUMINUM SERIES

## Options

### Installation Accessories

Quaker can provide a multitude of accessories for your M600 installation.

- Panning
- Receptor
- Subsill
- Anchor straps
- Interior and exterior trim
- Drywall channel

Other factory-applied\* options and accessories include:

- Louver systems to accommodate HVAC (horizontal or vertical)
- WOCD (Window Operating Control Device). Meets ASTM F2090 requirements for window fall prevention.
- Trickle Vent (aka Background Ventilators) to allow for small amounts of air transfer
- Preserve Film protects against glass damage during construction stage

and many more.

*\*Some limitations may apply*

Block 5 Apartments/Hyatt Place  
Rapid City, SD  
Developer: Block 5 LLC  
Contractor: Lloyd Construction Co.  
Architect: VanDeWalle Architects  
Glazing Contractor: Hagen Glass Company



Credit: Lloyd Construction / lloydcompanies.com

# M600

COMMERCIAL ALUMINUM SERIES

## Solutions for Special Applications

### Impact (M700)

- Casement, Project-Out and Fixed window models
- Sliding and Terrace Door models
- Products meet ASTM 1886 (Large Missile Impact - Level D) testing requirements
- Nail Fin or Trim/Clip anchorage systems for operating window models
- Nail Fin anchorage system for Fixed window and Sliding Door
- Through frame anchorage system for Terrace Door

### Texas Dept. of Insurance (M700)

- Products satisfy TDI's criteria for protection from windborne debris
- Fixed (60" x 96" test size): Evaluation ID: WIN-2500
- Fixed w/louver (60"x 94" test size): Evaluation ID: WIN-2501
- Fixed (48"x60" test size): Evaluation ID: WIN-2502
- Must be installed at height on structure that does not exceed DP rating for the assemblies
- See full info at [tdi.texas.gov](http://tdi.texas.gov)

### Florida Building Commission

- Meets all required FBC calculations
- Casement: FL27673 (2020 Code Version)
- Project-Out: FL27676 (2020 Code Version)
- Fixed: FL23998 (w/louver) (2020 Code Version)
- Sliding Door: FL30496 (2020 Code Version)
- Terrace Door: FL28083 (2020 Code Version)
- Approved anchorage systems
- See full info at [FloridaBuilding.org](http://FloridaBuilding.org)

Threefoot Hotel  
Meridian, MS  
Developer & Contractor: Ascent Hospitality  
Architect: Campo Architects  
Commercial Dealer: Commercial Glass Fabr.



Credit: [VisitMississippi.org](http://VisitMississippi.org)



QUAKER

[www.QuakerCommercialWindows.com](http://www.QuakerCommercialWindows.com)

# M600

COMMERCIAL ALUMINUM SERIES

## LEED®

All window and door models from the M600 Series can assist with garnering LEED points for your commercial project

- LEED Building Design and Construction (LEED BD+C) works for both new construction and replacement commercial projects.
- Go to [usgbc.org/leed](http://usgbc.org/leed) for more information.

\*Quaker Window Products, Inc. does not make any guarantee of LEED-accreditation or Level Certification with the use of Quaker products.

## BABAA

Quaker certifies M600 Series windows and doors satisfy the domestic pricing preference requirements set forth under **Build America, Buy America Act (BABAA)**.

- M600 Series products are manufactured in the U.S. at our facilities in Missouri
- The cost of the domestically sourced components of M600 Series products is greater than 55% of the total cost of the products

\*Some projects may require project specific reviews based on product options selected to ensure that a 55% threshold is retained. Contact Quaker for project specific documentation.

öLiv Hetzel  
State College, PA  
Developer: CORE Spaces  
Contractor: Findorff & Son  
Architect: OGP Architects  
LEED: Certified



Credit: Findorff & Son Construction / [findorff.com](http://findorff.com)

800-347-0438



# M600

COMMERCIAL ALUMINUM SERIES

## Architectural Support Services

Quaker's Architectural Support Services Group brings together a range of experience to help navigate the complexities of modern architectural planning. The group assists by providing product-related insights that complement your design goals and professional responsibilities.

Using a proactive approach to risk mitigation, Quaker's Architectural Support Services Group can assist across a broad spectrum of architectural considerations:



- Project Specification Review



- Product Performance Data and Application Guidance



- Local and Architectural Sales Support



- Job-Specific Testing: In-House and In-The-Field



- Architectural Product Guidance



- Design, Drafting and Thermal Modeling

Plus, Quaker has a dedicated commercial team with more than 200 years of combined industry experience.



Discover more details regarding Quaker's unique Architectural Support Services, and connect with your local Sales & Architectural Consultant.



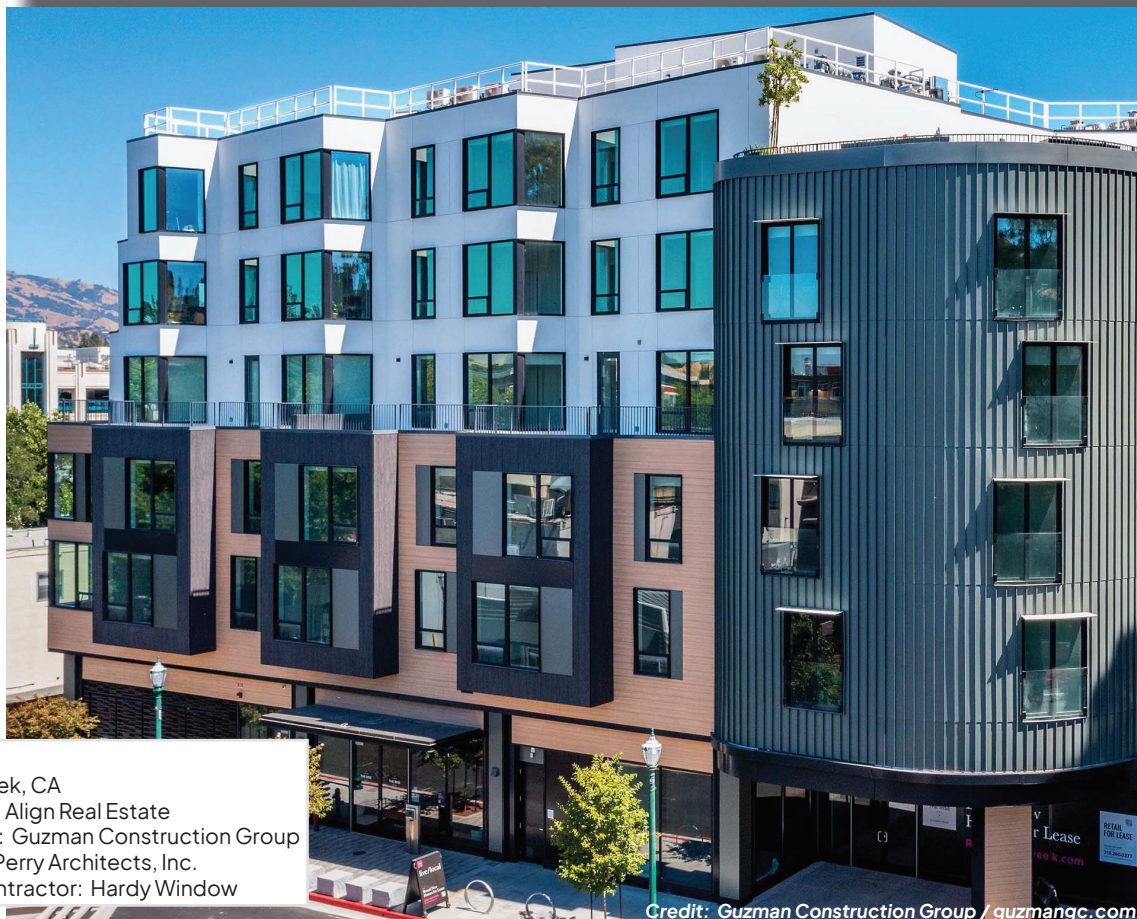
# The Quaker Difference: More than meets the eye.

What distinguishes Quaker from all other window and door companies? The Quaker Difference. All Quaker products are comprised of tangible and intangible assets, working together to form the most sought-after windows in the market.

- It's a standard of craftsmanship and engineering excellence we build into every product.
- It's professional manufacturing specialists, some with more than 40 years of window experience, providing unparalleled attention to detail from start to finish.
- It's shying away from testing at only entry-level, gateway sizes. Instead, we test using exaggerated and even maximum sizing.
- It's multiple quality checks implemented throughout the manufacturing process to provide a paramount product.
- It's our state-of-the-art paint facilities. Unlike many manufacturers who must outsource, Quaker controls the quality and consistency of our finish in-house.
- It's employing thicker glass panes which will both lower the amount of stress cracks and raise your ability to control sound intrusion.
- It's our "can-do" attitude toward custom projects. Our option and accessory choices allow us to do what others often can't.
- It's doing more than just selling windows and doors. It's helping you find the right window and door solution for your project.



That's *The Quaker Difference*.



The Rise  
Walnut Creek, CA  
Developer: Align Real Estate  
Contractor: Guzman Construction Group  
Architect: Perry Architects, Inc.  
Glazing Contractor: Hardy Window

Credit: Guzman Construction Group / [guzmangc.com](http://guzmangc.com)

800-347-0438






# M600

COMMERCIAL ALUMINUM SERIES

Find more information on Quaker windows and doors



 [www.QuakerCommercialWindows.com](http://www.QuakerCommercialWindows.com)

 1-800-347-0438

 [commercial@quakerwindows.com](mailto:commercial@quakerwindows.com)



Made in America: All Quaker products are designed and manufactured in the United States at our state-of-the-art facilities in Eldon, MO (above) and Freeburg, MO.



May, 2026 - V6a



**ON THE COVER:**

Brush & Watson  
Detroit, MI  
Developer: American Community Developers  
Architect: Oombra Architects  
Contractor: St. Clair Construction

Quaker Window Products reserves the right to change or discontinue any products or options within this brochure without notice.