



# V200

COMMERCIAL VINYL SERIES

Single Hung | Double Hung | Horizontal Slider | Fixed



Product Material  
uPVC Vinyl



Frame Depth  
3 1/4"



Rating  
Single Hung: R35  
Double Hung: R40  
Slider: R40  
Fixed: R35 / CW50

Danbury on 5th  
Columbus, OH  
Developer: Danbury Senior Living  
Contractor: The Daimler Group  
Dealer: Northern Window & Doors Ltd.



<p><b>Design Pressure</b> Single Hung: 35 Double Hung: 40 Slider: 40 Fixed: up to 50</p>	<p><b>U-Value*</b> Single Hung: .25 - .52 Double Hung: .24 - .51 Slider: .25 - .52 Fixed: .22 - .51</p>
<p><b>Air Infiltration</b> Single Hung: &lt;.30 Double Hung: &lt;.30 Slider: &lt;.30 Fixed: &lt;.10</p>	<p><b>SHGC*</b> Single Hung: .12 - .62 Double Hung: .11 - .62 Slider: .12 - .62 Fixed: .12 - .65</p>
<p><b>Water Resistance</b> Single Hung: 5.43 Double Hung: 6 Slider: 6 Fixed: up to 7.5</p>	<p><b>CR*</b> Single Hung: 31 - 60 Double Hung: 31 - 59 Slider: 31 - 59 Fixed: 30 - 62</p>
<p><b>OITC<sup>x</sup></b> Single Hung: 27 Double Hung: Contact Quaker Slider: 24-28 Fixed: Contact Quaker</p>	<p><b>STC<sup>x</sup></b> Single Hung: 29 - 35 Double Hung: Contact Quaker Slider: 29-31 Fixed: Contact Quaker</p>
<p>*-Ranges based on multiple Low-E/Argon I.G. combinations x-Ranges based on multiple I.G. combinations</p>	

## FEATURES:

- ▶ Versatile uPVC vinyl window series with built-in budgetary advantages
- ▶ 3/4" insulating glass
- ▶ Mitered and welded corners
- ▶ Integral nail fin
- ▶ Block & Tackle balancers in Hung models
- ▶ Brass rollers with stainless steel axle pins (Sliding model)
- ▶ Metal reinforcements added for additional strength
- ▶ Numerous mull systems for multi-unit combos
- ▶ White or Sandstone vinyl
- ▶ White and Sandstone vinyl (exterior/interior)
- ▶ Optional painted exterior (meets FGIA 615 finish)
- ▶ Textured laminate options for exterior and interior
- ▶ Use up to 4 floors.

[www.QuakerCommercialWindows.com](http://www.QuakerCommercialWindows.com)

Information listed is deemed accurate as of date shown. Quaker Windows reserves the right to change or discontinue any product, feature or option without notice.

May, 2026 V7

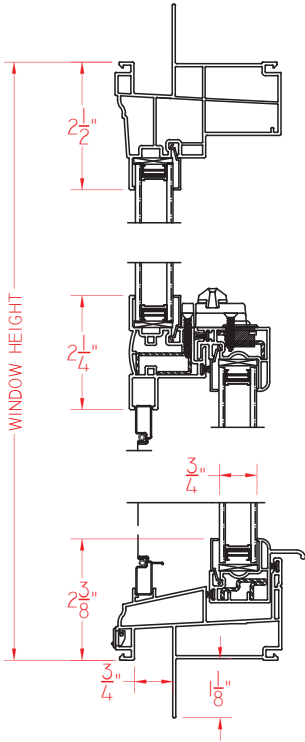


# V200

COMMERCIAL VINYL SERIES

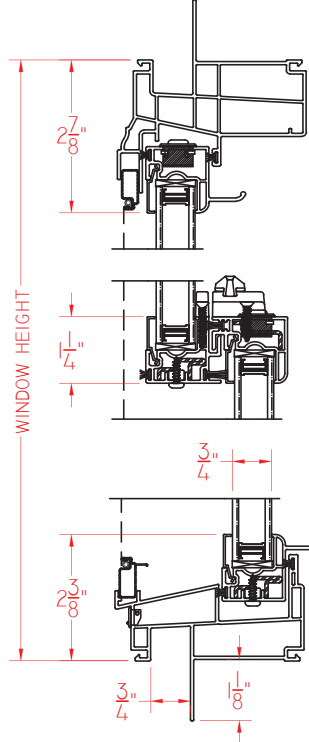
## Single Hung

Test size = 40" x 63"



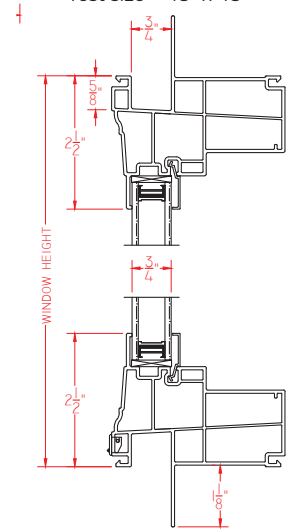
## Double Hung

Test size = 40" x 63"



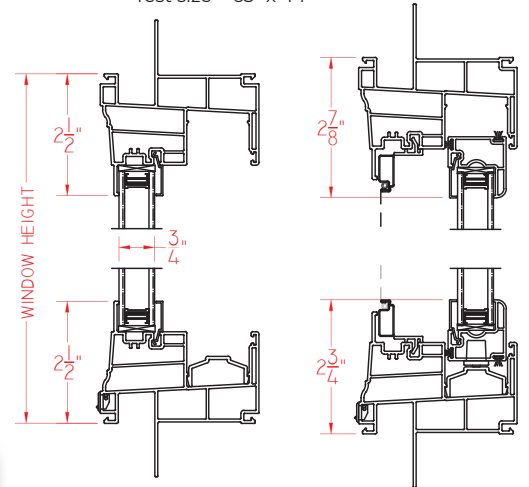
## Fixed

Test size = 48" x 48"



## Horizontal Slider

Test size = 63" x 44"



[QuakerCommercialWindows.com](http://QuakerCommercialWindows.com)  
1-800-347-0438  
[Commercial@quakerwindows.com](mailto:Commercial@quakerwindows.com)