

C600/C605 Series 4 1/8" Frame Depth Casement (Project-Out)

C600/C605 Series Casement (Project-Out)

Features

- ◇ **Material**
 - Extruded Aluminum
- ◇ **Framing System**
 - Patented OptiCore Technology
 - Architectural grade aluminum frame
 - Dual Euro-Groove frame system
- ◇ **Enhanced Design**
 - Azo-Core Thermal Barrier System for reduced thermal-conductivity and increased energy-efficiency
 - Modern, squared frame glazing
 - 2 7/8" narrow sitelines
 - With or without Integral Nailing Fin
- ◇ **Glazing**
 - 1" insulating glass
 - Dual-sealed Warm Edge Super Spacer system
- ◇ **Hardware**
 - Heavy-commercial Amesbury/Truth lock and crank-out system
- ◇ **Screen**
 - Easily removable FlexScreen system carries a lifetime warranty

Performance

- ◇ Structural & Thermal (test reports available upon request)

Model	Casement (Project-Out)
NAFS Rating	AW-100
Test Size	36" x 60"
Design Pressure (P.S.F.)	100
Air Infiltration (cfm/ft ²)	<0.10
Water Resistance (P.S.F.)	15
CR (Condensation Resistance)	45-81
U-Value (ranges based on multiple Low-E/Argon combinations)	0.19-0.36
SHGC (ranges based on multiple Low-E/Argon combinations)	0.11-0.45
OITC/STC (ranges are based on the use of multiple glass pane thicknesses)	23-34 / 28-41

Due to periodic re-certification requirements, result shown may vary.

Options

- ◇ **Available Configurations**
 - Project-out Casement (Left or Right)
 - Continuous frame capabilities
- ◇ **Enhanced Design**
 - Traditional/Historic beveled frame glazing (C605 Series)
- ◇ **Muntin Choices**
 - Internal or simulated divided lites available
- ◇ **Hardware and Screen**
 - ADA Hardware
 - Limited travel hardware
 - Retractable screen systems
- ◇ **Glazing**
 - Multiple Low-E and argon glazing choices
 - Impact-rated glazing package
 - Glazing pocket can accept up to 1 3/8" insulating glass for sound attenuation purposes
 - Triple glazing
 - WACI Blind System
 - Capillary tubes
 - Wide variety of tinting and pane thickness options
- ◇ **Panning & Trim Choices**
 - Wide variety of panning, receptor and trim available
- ◇ **Mulling**
 - Wide variety of structural mulls

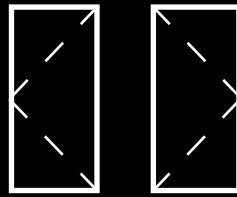
Benefits

- ◇ Capacity to match exterior colors for unique project facades
- ◇ Two-tone capabilities with a color to match the building interior and another to match the exterior
- ◇ Maximum sizing affords the facilitation of large sizes for taller and wider window openings
- ◇ Thermal performances never thought achievable in aluminum windows

Operating Force (per ASTM E2068):
AW-PG100-C: Initiate motion - 36 N (8 lbf)
Maintain motion - 18 N (6 lbf)
AW-PG70-C: Initiate motion and Maintain motion - 13 N (3 lbf)

Our products are tested to the standards of and certified by some of the foremost organizations in the fenestration industry.



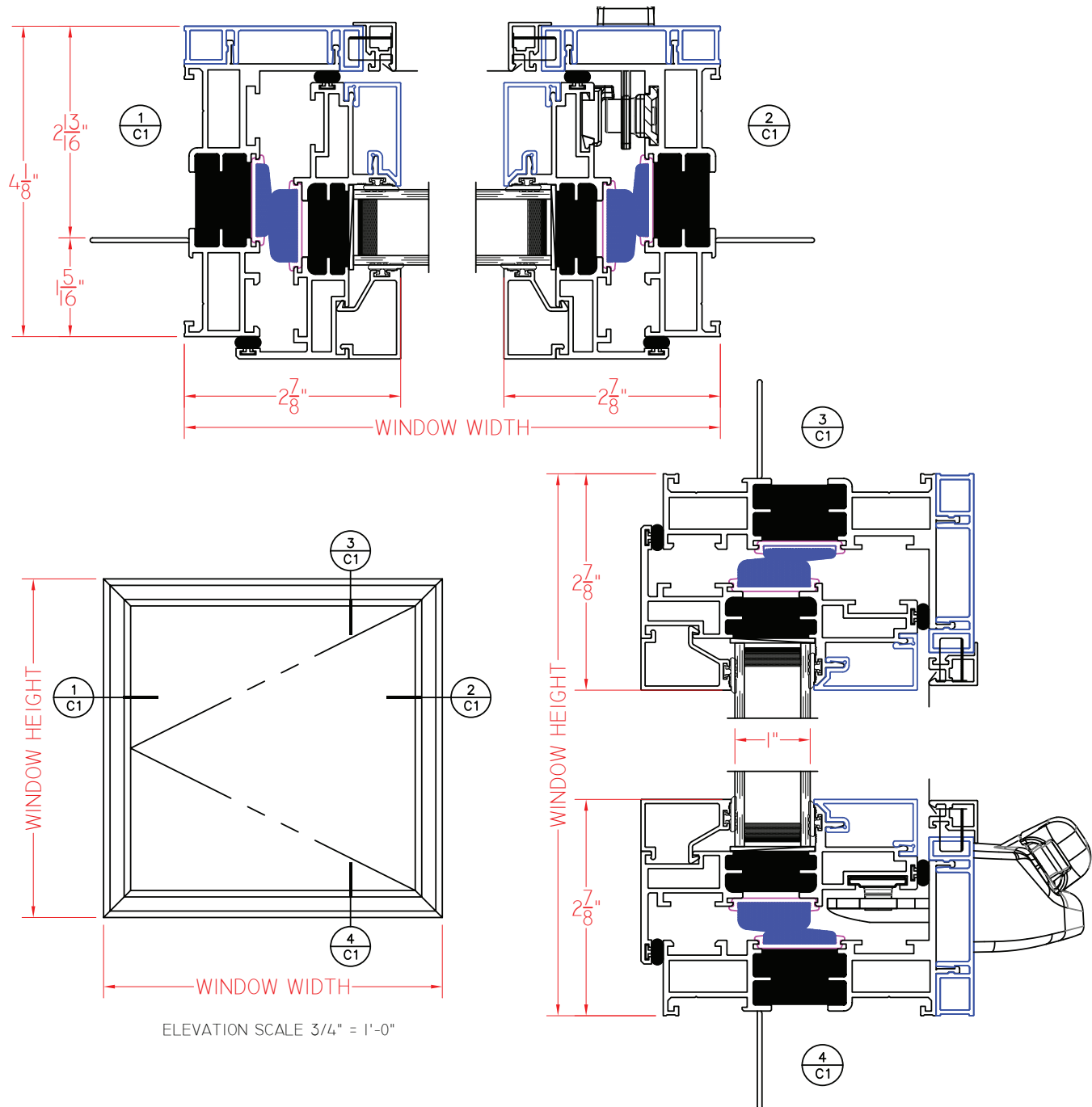


C600 Series 4 1/8" Frame Depth Casement (Project-Out)

C600 Series Casement (Project-Out)

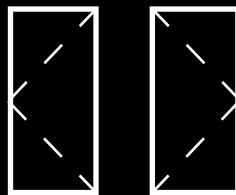
With Nailing Fin,
Square Glazing Stops
and Roto Hardware

This document contains confidential and proprietary information intended for the private use of Quaker.
© 2019 Quaker Window Products Co., All rights reserved.
Quaker reserves the right to change any/all designs without notice.



Our products are tested to the standards of and certified by some of the foremost organizations in the fenestration industry.



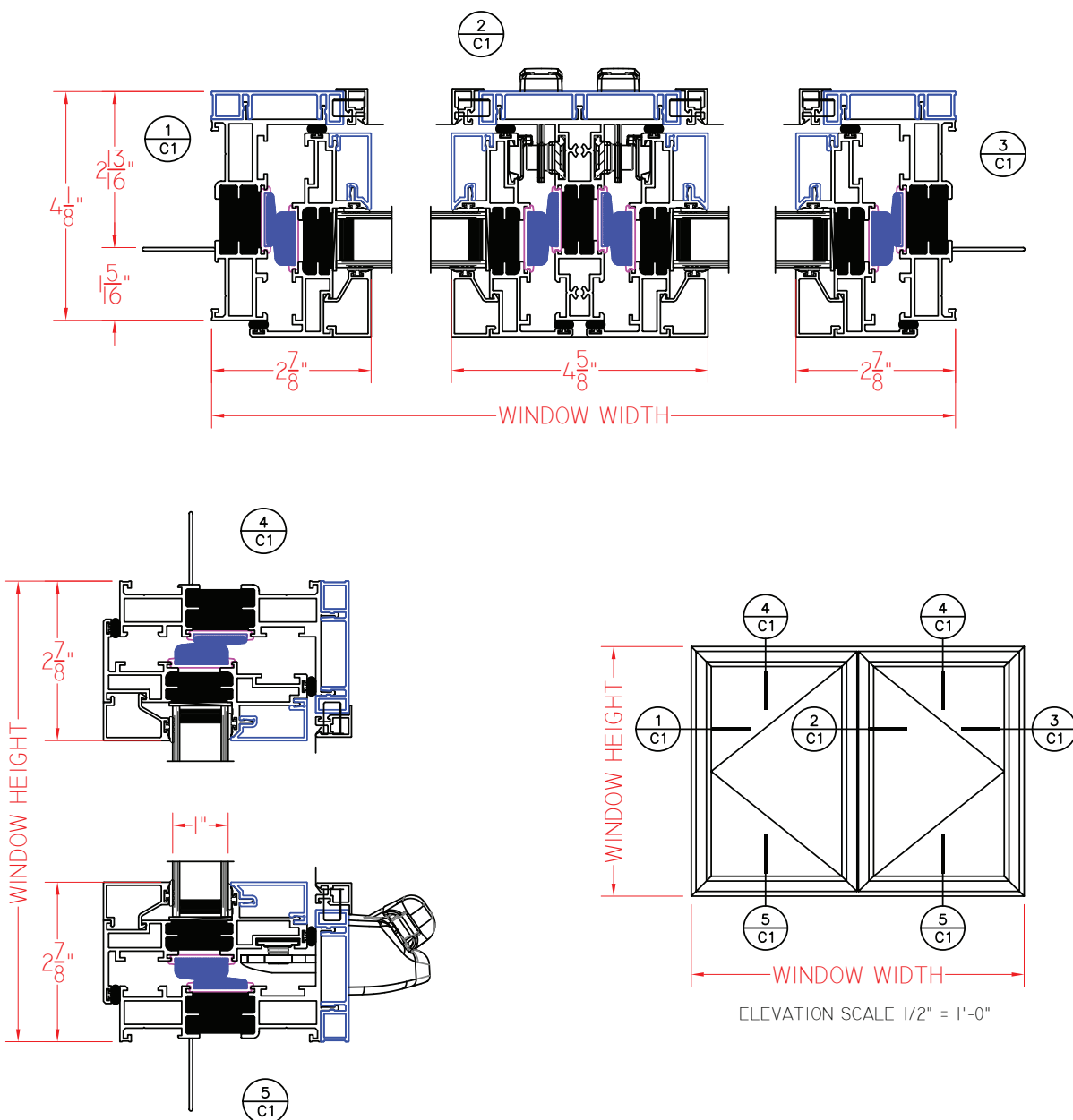


C600 Series 4 1/8" Frame Depth Casement (Project-Out)

C600 Series Casement/Casement (Project-Out)

With Nailing Fin,
Square Glazing Stops
and Roto Hardware

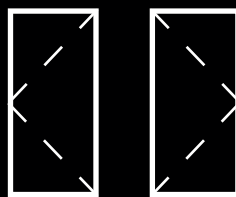
This document contains confidential and proprietary information intended for the private use of Quaker.
© 2019 Quaker Window Products Co., All rights reserved.
Quaker reserves the right to change any/all designs without notice.



SHEET C1
SCALE 1:3

Our products are tested to the standards of and certified by some of the foremost organizations in the fenestration industry.



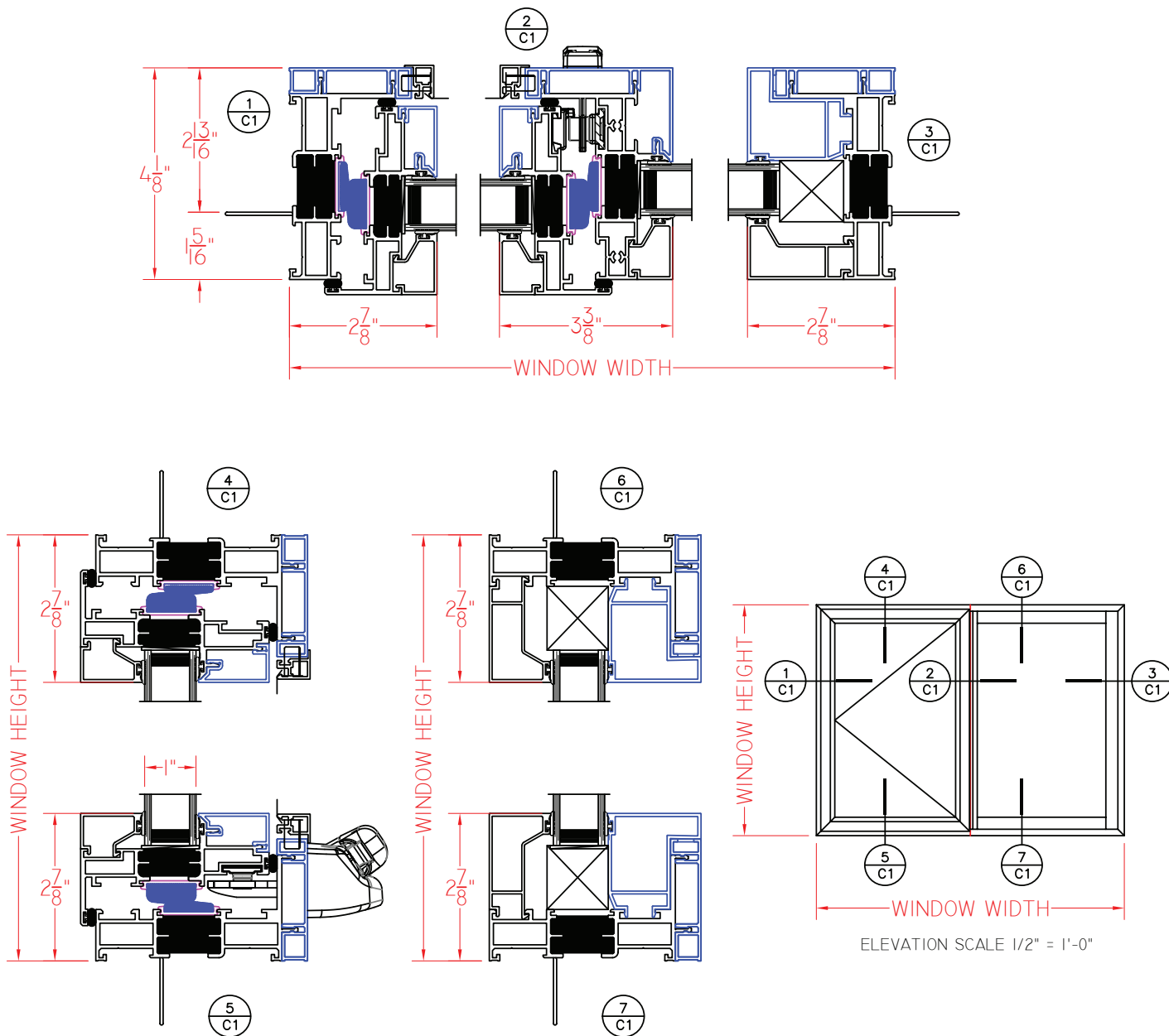


C600 Series 4 1/8" Frame Depth Casement (Project-Out)

C600 Series Casement/Fixed (Project-Out)

With Nailing Fin,
Square Glazing Stops
and Roto Hardware

This document contains confidential and proprietary information intended for the private use of Quaker.
© 2019 Quaker Window Products Co., All rights reserved.
Quaker reserves the right to change any/all designs without notice.

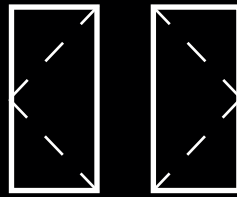


SHEET C1
SCALE 1:3

Our products are tested to the standards of and certified by some of the foremost organizations in the fenestration industry.



WINDOW & DOOR
MANUFACTURERS ASSOCIATION
WDMA
M E M B E R

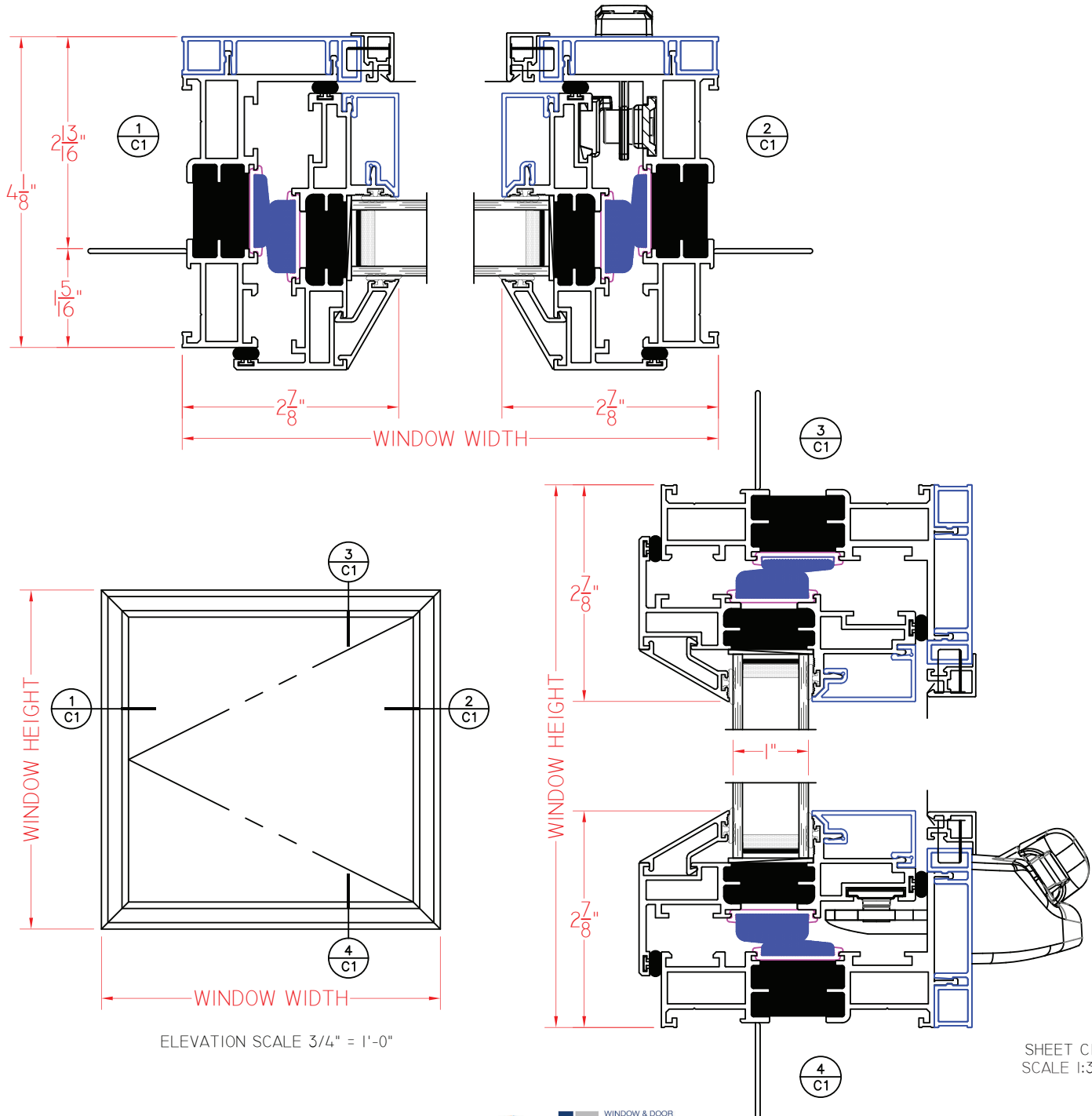


C605 Series 4 1/8" Frame Depth Casement (Project-Out)

C605 Series Casement (Project-Out)

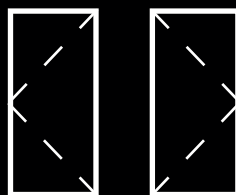
With Nailing Fin, Beveled
Glazing Stops and Roto
Hardware

This document contains confidential and proprietary information intended for the private use of Quaker.
© 2019 Quaker Window Products Co., All rights reserved.
Quaker reserves the right to change any/all designs without notice.



Our products are tested to the standards of and certified by some of the foremost organizations in the fenestration industry.



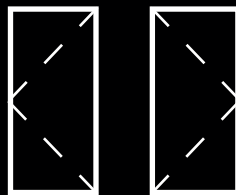


C605 Series Casement/Casement (Project-Out)

This document contains confidential and proprietary information intended for the private use of Quaker.
© 2019 Quaker Window Products Co., All rights reserved.
Quaker reserves the right to change any/all designs without notice.



WINDOW & DOOR
MANUFACTURERS ASSOCIATION
WDMA
MEMBERS

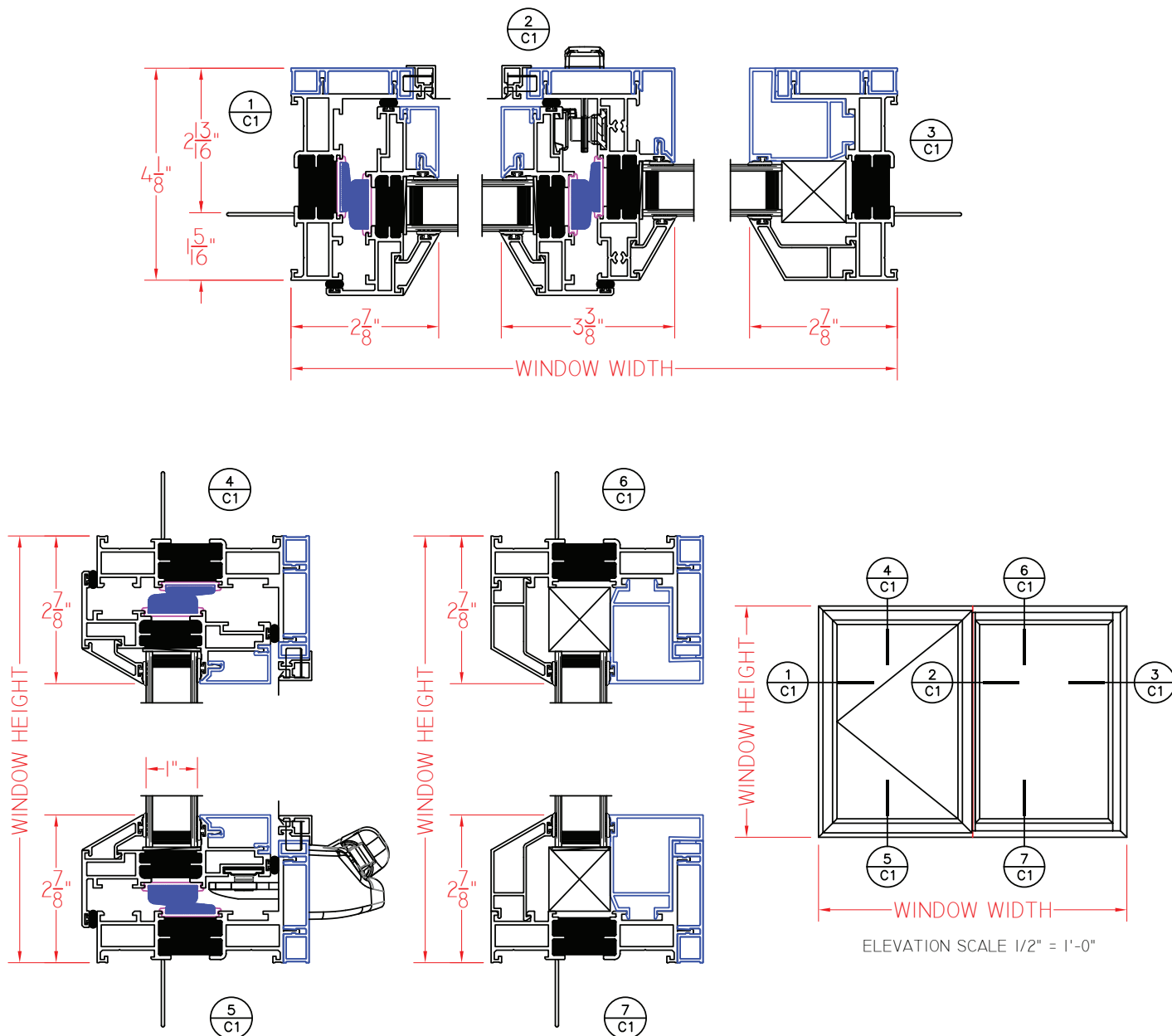


C605 Series 4 1/8" Frame Depth Casement (Project-Out)

C605 Series Casement/Fixed (Project-Out)

With Nailing Fin, Beveled
Glazing Stops and Roto
Hardware

This document contains confidential and proprietary information
intended for the private use of Quaker.
© 2019 Quaker Window Products Co., All rights reserved.
Quaker reserves the right to change any/all designs without notice.



SHEET C1
SCALE 1:3

Our products are tested to the standards of and
certified by some of the foremost organizations
in the fenestration industry.

