

E600 Series 3 1/4" Frame Depth Casement

E600 Series Casement (Project-Out)

Features

- ◇ **Material**
 - Extruded Aluminum
- ◇ **Commercial Framing System**
 - 3 1/4" main frame
 - 0.094" wall thickness of interior and exterior walls, 0.078" wall thickness elsewhere
- ◇ **Thermally Enhanced Design**
 - Azon pour and debridge thermal break is 1/2" wide in all main frame and vent rail extrusions
 - Assembled with heavy duty Monticelli cast aluminum corner keys
 - Mitered and pressure sealed internally with injected silicone through corner key passages. Wrap-around marine glazing
- ◇ **Glazing**
 - 1" insulating glass
 - 3/4" insulating glass (Egress)
- ◇ **Hardware**
 - Butt hinges, 4-Bar hinges and Euro hinges available on both project-out and project-in windows
 - Heavy-commercial Truth Contour™ locking system (Crank-out only)
 - Heavy-commercial Truth Contour™ multipoint lock with push handle (no crank hardware)
 - Low profile cam handle (Push-out and Pull-in only)
 - Pole Operated handle (Push-out and Pull-in only)
 - Custodial lock (Pull-in only)
 - Custodial lock with removable handle (Push-out only)
- ◇ **Screen**
 - Wicket screen (Push-out only)
 - Extruded aluminum screen frame with BetterVue™ mesh (Crank-out only)
- ◇ Meets ADA Requirements (ADA Handle Required, Crank-out only)

Options

- ◇ **Available Configurations**
 - Project-out and Project-in casement
 - Push-out, Crank-out or Pull-in
 - Wire frame capabilities
- ◇ **Muntin Choices**
 - Internal or simulated divided lites available
- ◇ **Limited Travel Hardware**
- ◇ **Screen**
 - Extruded aluminum screen frame with aluminum wire mesh
 - Extruded aluminum screen frame with sunscreen mesh
 - Extruded aluminum screen frame with stainless steel 0.009" thickness mesh
- ◇ **Glazing**
 - Multiple Low-E and argon glazing choices
 - Capillary tubes
 - Optional glazing stop to accept 1 3/8" triple glazing (Energy TG)
 - Wide variety of glazing, tinting and thickness options
- ◇ **Panning & Trim Choices**
 - Wide variety of panning, receptor and trim available
- ◇ **Mulling**
 - Wide variety of structural mulls

Benefits

- ◇ The capacity to match exterior colors for unique project facades
- ◇ The ability to facilitate large sizes for taller and wider window openings

Performance

- ◇ Structural & Thermal (test reports or thermal simulations available upon request)

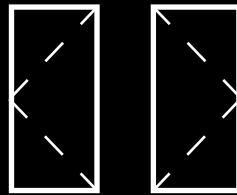
Model	Casement (Project-Out)	Casement (Project-In)
Test Size	36" x 72"	
NAFS Rating	AW-70	
Structural Load P.S.F.	100	
Air Infiltration (cfm/ft ²)	<0.10	
Water (No Penetration) P.S.F.	12	
U-Value (ranges based on multiple Low-E/Argon combinations)	0.27-0.58	
SHGC (ranges based on multiple Low-E/Argon combinations)	0.09-0.49	

Operating Force: 9 lbf (project-out casement), 14 lbf (project-in casement), 3 lbf (ADA Handle maintain motion), 3 lbf (ADA Handle lock)

Due to periodic re-certification requirements, result shown may vary.

Our products are tested to the standards of and certified by some of the foremost organizations in the fenestration industry.



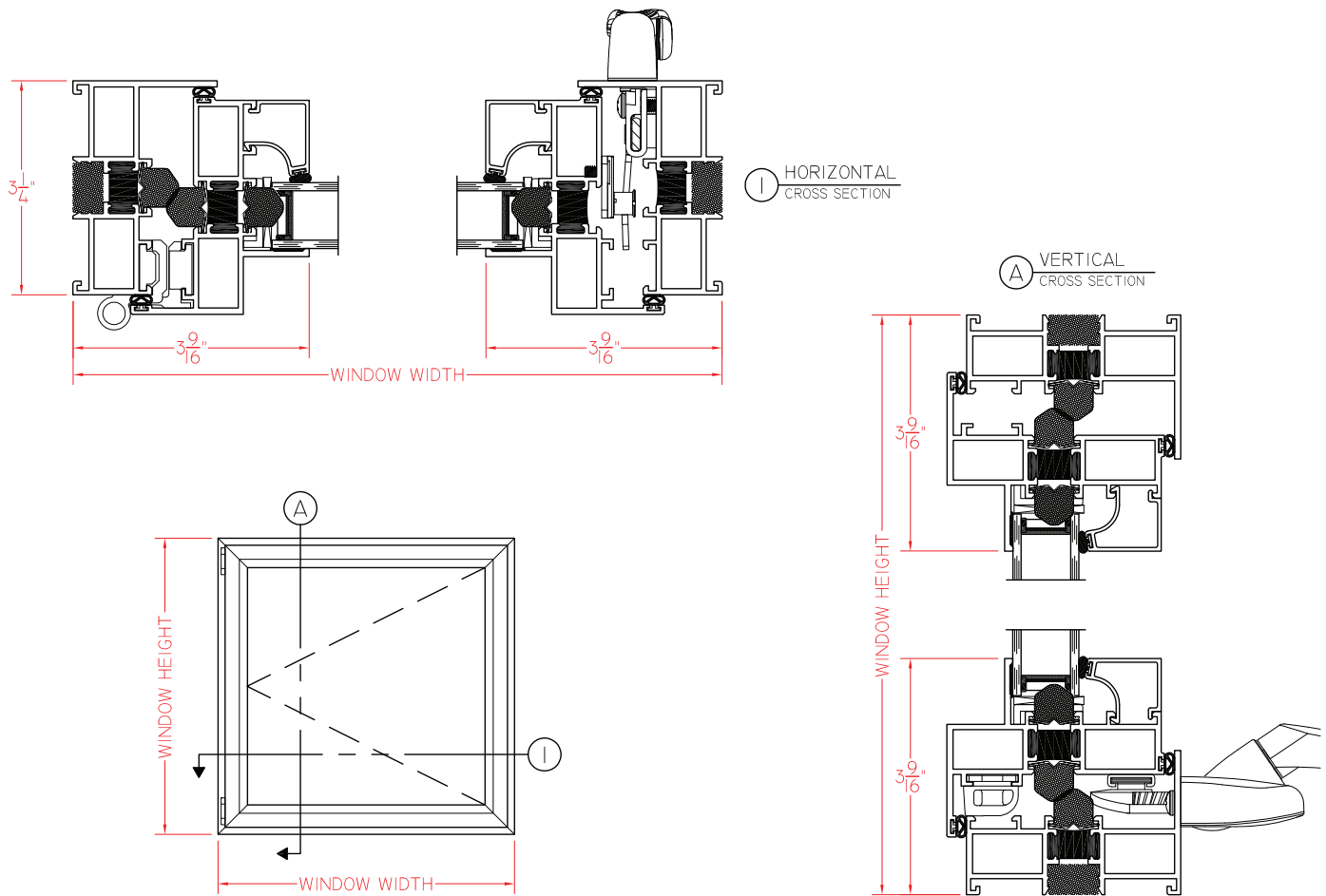


E600 Series 3 1/4" Frame Depth Casement

With Roto
Hardware

E600 Series Casement (Project-Out)

This document contains confidential and proprietary information intended for the private use of Quaker.
© 2016 Quaker Window Products Co., All rights reserved.
Quaker reserves the right to change any/all designs without notice.

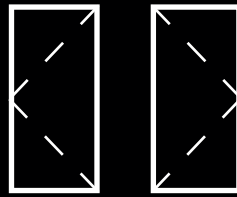


ELEVATION SCALE 3/4" = 1'-0"

SCALE 1:2

Our products are tested to the standards of and certified by some of the foremost organizations in the fenestration industry.



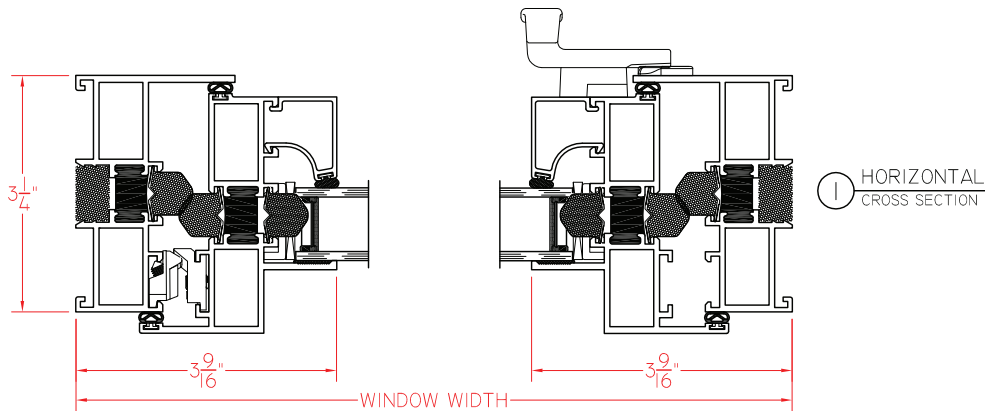


E600 Series 3 1/4" Frame Depth Casement

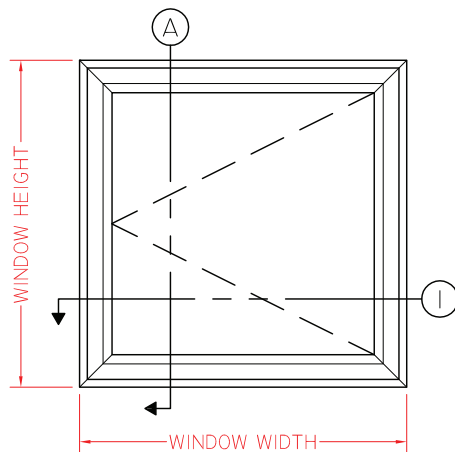
E600 Series Casement (Project-Out)

With Push-Out
Hardware

This document contains confidential and proprietary information intended for the private use of Quaker. © 2016 Quaker Window Products Co., All rights reserved. Quaker reserves the right to change any/all designs without notice.

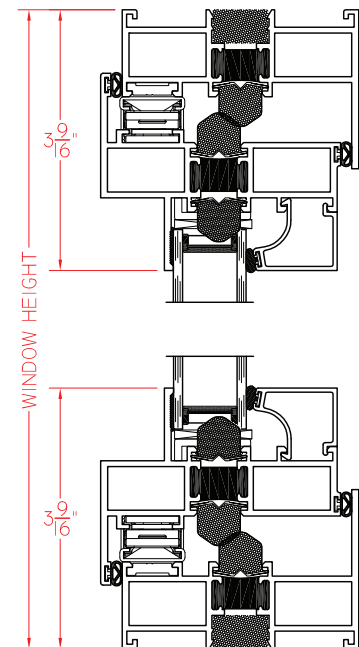


① HORIZONTAL
CROSS SECTION



ELEVATION SCALE 3/4" = 1'-0"

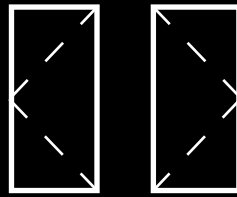
② VERTICAL
CROSS SECTION



SCALE 1:2

Our products are tested to the standards of and certified by some of the foremost organizations in the fenestration industry.



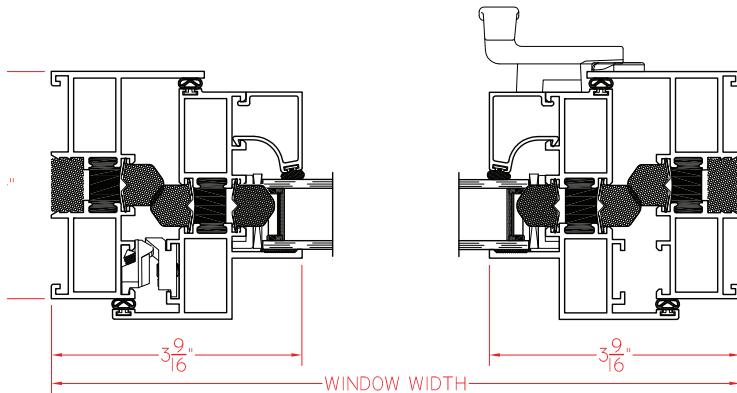


E600 Series 3 1/4" Frame Depth Casement

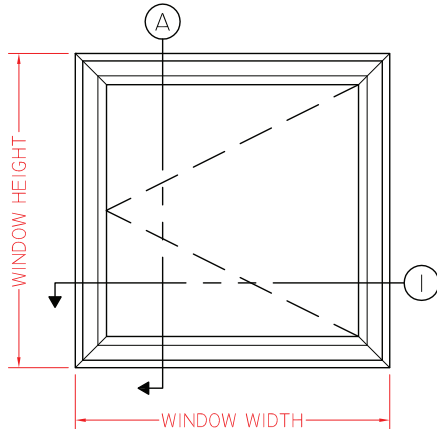
E600 Series Egress Casement (Project-Out)

With Push-Out
Hardware

This document contains confidential and proprietary information intended for the private use of Quaker. © 2016 Quaker Window Products Co., All rights reserved. Quaker reserves the right to change any/all designs without notice.

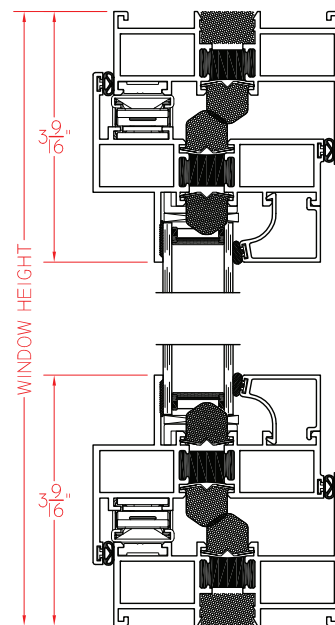


① HORIZONTAL
CROSS SECTION



ELEVATION SCALE 3/4" = 1'-0"

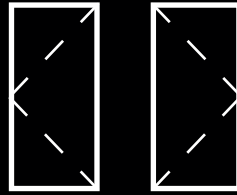
② VERTICAL
CROSS SECTION



SCALE 1:2

Our products are tested to the standards of and certified by some of the foremost organizations in the fenestration industry.



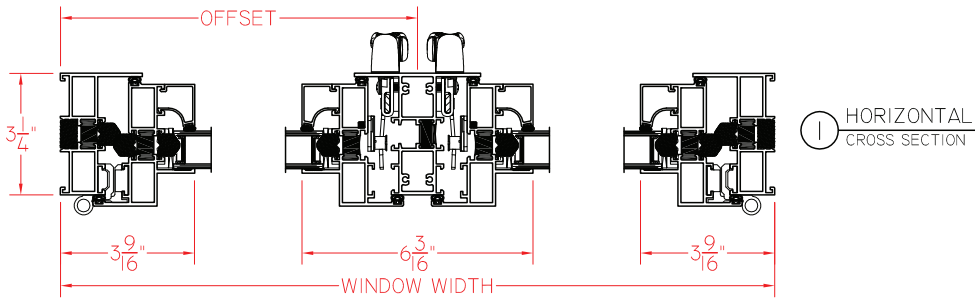


E600 Series 3 1/4" Frame Depth Casement

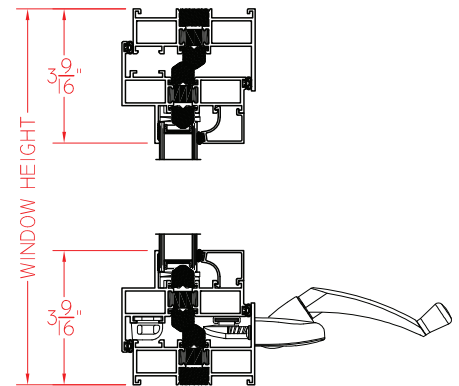
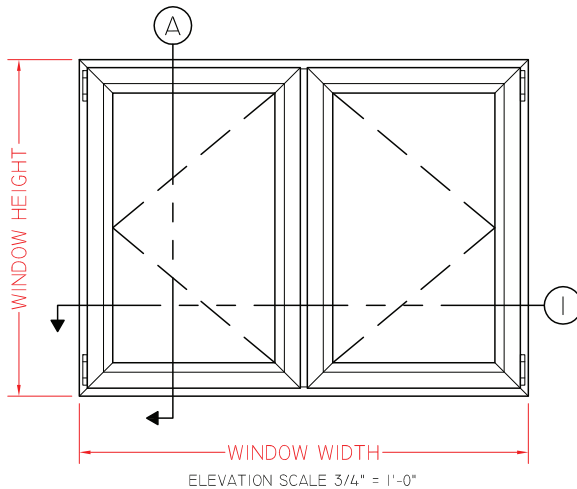
With Roto
Hardware

E600 Series Casement/Casement

This document contains confidential and proprietary information intended for the private use of Quaker.
© 2016 Quaker Window Products Co., All rights reserved.
Quaker reserves the right to change any/all designs without notice.

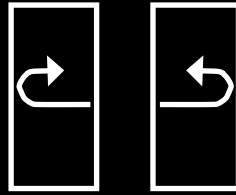


Ⓐ VERTICAL
CROSS SECTION



Our products are tested to the standards of and certified by some of the foremost organizations in the fenestration industry.



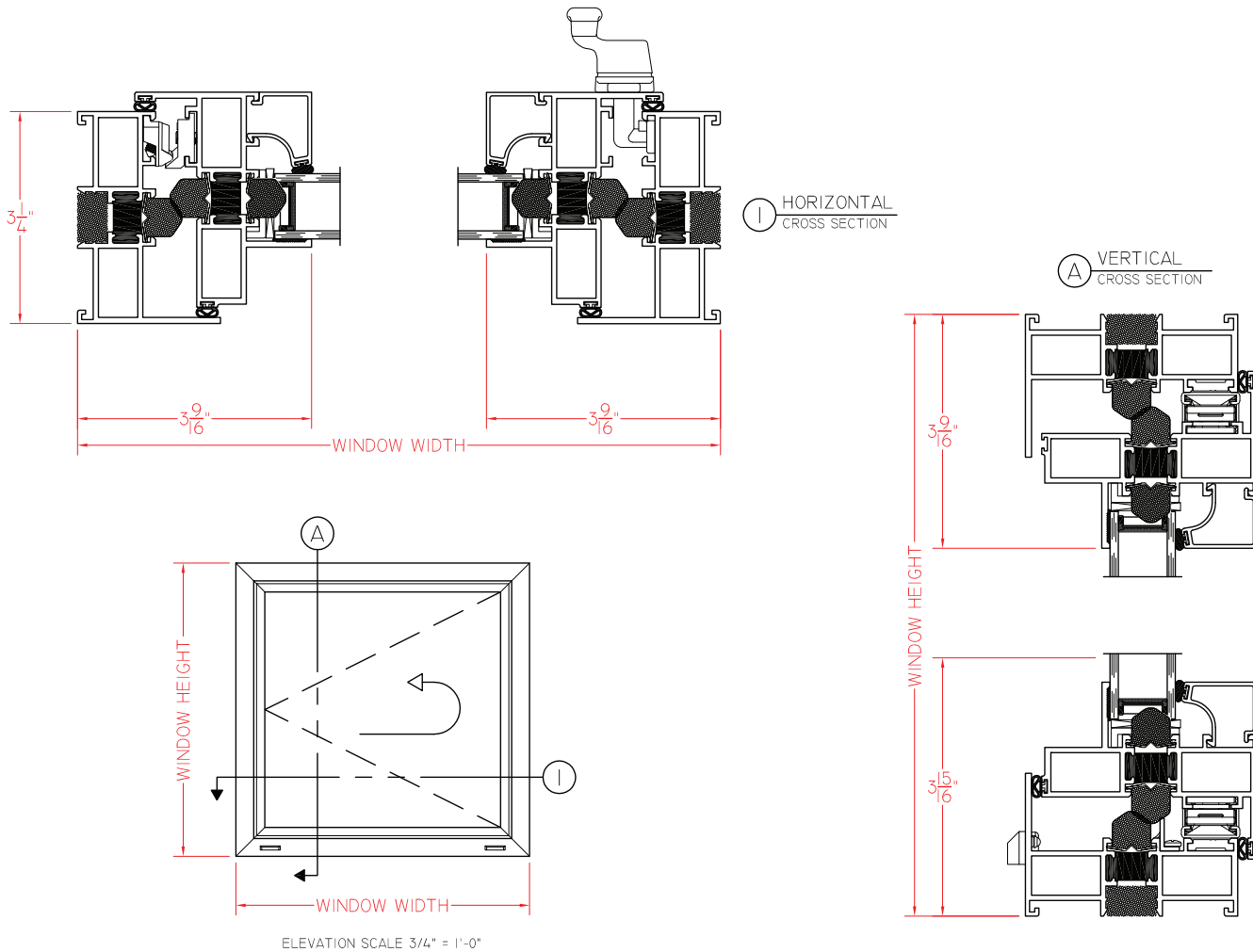


E600 Series 3 1/4" Frame Depth Inswing Casement

With Euro Lock
Hardware

E600 Series Casement (Project-In)

This document contains confidential and proprietary information intended for the private use of Quaker.
© 2016 Quaker Window Products Co., All rights reserved.
Quaker reserves the right to change any/all designs without notice.



SCALE 1:2

Our products are tested to the standards of and certified by some of the foremost organizations in the fenestration industry.

