

H450 Series 3 1/4" Frame Depth Casement

H450 Series Casement (Project-Out)

Features

- ◇ **Material**
 - Extruded Aluminum
- ◇ Commercial Framing System
 - 3 1/4" main frame
 - Historically-correct bevel frame exterior
 - Minimum of 0.080" wall thickness
 - Dual Euro Groove System
 - Available with or without integral nailing fin
- ◇ Thermally Enhanced Design
 - Thermally-broken main frame and vent rails
 - Azon pour and debridge thermal break technology
- ◇ Glazing
 - 1" insulating glass
- ◇ Hardware
 - Maxim LP Locking System, Chic Hinge and Roto Hardware on crankout model
 - Maxim LP Locking System, 4-Bar Hinge and Cam Turn Hardware on push-out model
- ◇ Screen
 - Easily removable FlexScreen

Options

- ◇ Available Configurations
 - Project-out casement
 - Push out or Roto (Left or Right)
 - Continuous frame capabilities
 - Fixed
- ◇ Muntin Choices
 - Internal or simulated divided lites available
- ◇ Hardware
 - Limit Travel Accessories
- ◇ Screen
 - Wicket Screen (Push-out model only)
- ◇ Glazing
 - Multiple Low-E and argon glazing choices
 - Capillary tubes
 - Wide variety of glazing, tinting and thickness options
- ◇ Panning & Trim Choices
 - Wide variety of panning, receptor and trim available
- ◇ Mulling
 - Wide variety of structural mulls

Benefits

- ◇ Historically accurate profiles to help your project meet Historic Preservation codes
- ◇ The capacity to match exterior colors for unique project facades
- ◇ The ability to facilitate large sizes for taller and wider window openings

Performance

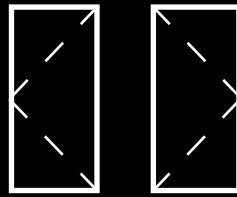
- ◇ Structural & Thermal (test reports or thermal simulations available upon request)

Model	Casement (Project-Out)
Test Size:	36" x 60"
NAFS Rating	Up to CW-90
Air Infiltration (cfm/ft ²)	<0.30
Water (No Penetration) P.S.F.	Up to 15
U-Value (ranges based on multiple Low-E/Argon combinations)	0.39–0.59
SHGC (ranges based on multiple Low-E/Argon combinations)	0.12–0.58
CR (ranges based on multiple Low-E/Argon combinations)	32–48

Due to periodic re-certification requirements, result shown may vary.

Our products are tested to the standards of and certified by some of the foremost organizations in the fenestration industry.



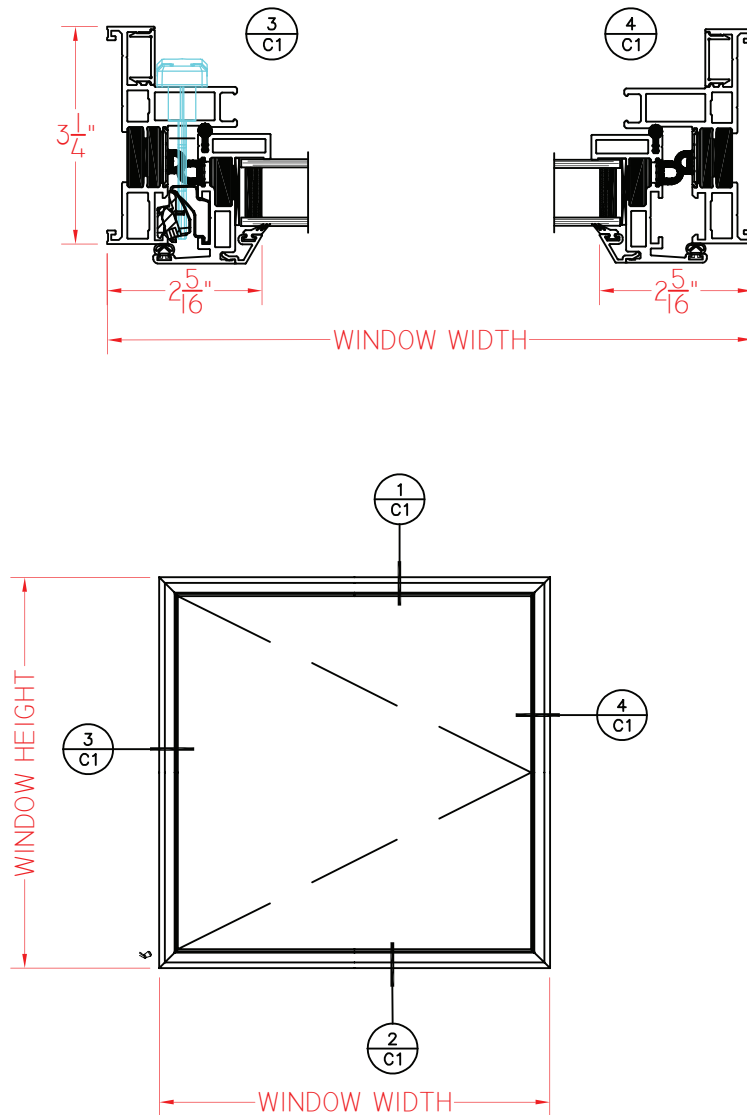


H450 Series 3 1/4" Frame Depth Casement (Project-Out)

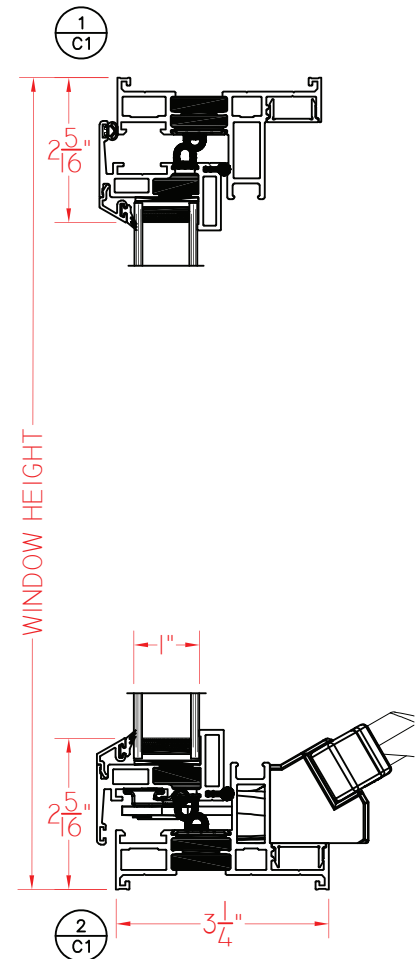
H450 Series Casement (Project-Out)

With Roto Hardware
and Without Nailing Fin

This document contains confidential and proprietary information intended for the private use of Quaker.
© 2020 Quaker Window Products Co., All rights reserved.
Quaker reserves the right to change any/all designs without notice.



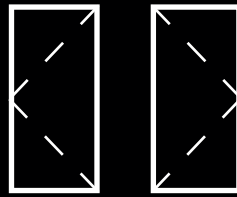
ELEVATION SCALE 3/4" = 1'-0"



SHEET C1
SCALE 1:2

Our products are tested to the standards of and certified by some of the foremost organizations in the fenestration industry.



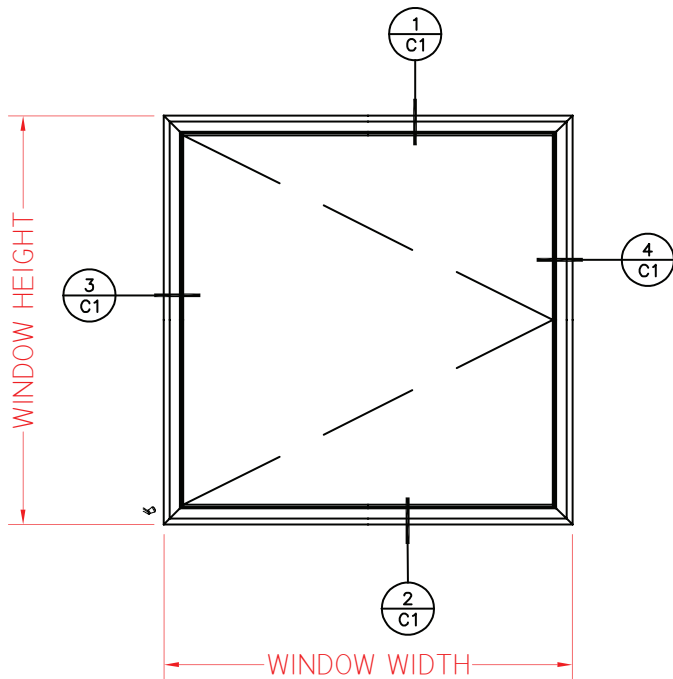
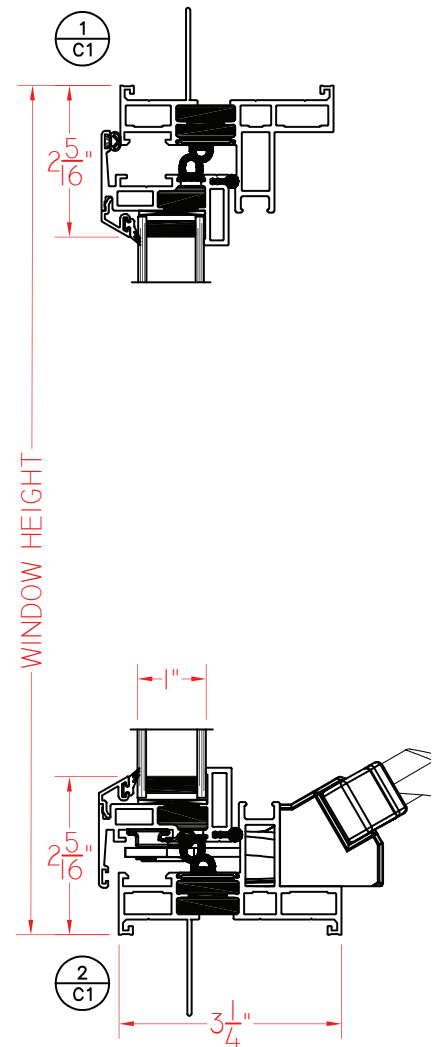
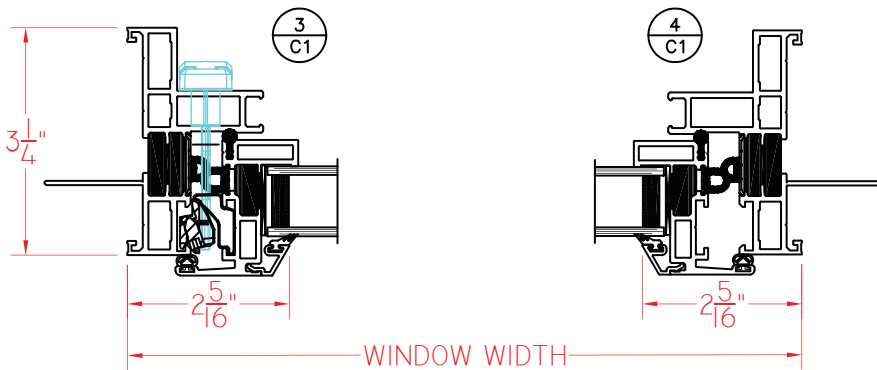


H450 Series 3 1/4" Frame Depth Casement

With Roto Hardware
and Nailing Fin

H450 Series Casement (Project-Out)

This document contains confidential and proprietary information intended for the private use of Quaker.
© 2020 Quaker Window Products Co., All rights reserved.
Quaker reserves the right to change any/all designs without notice.

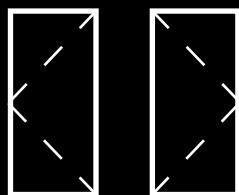


ELEVATION SCALE 3/4" = 1'-0"

SCALE 1:2

Our products are tested to the standards of and certified by some of the foremost organizations in the fenestration industry.



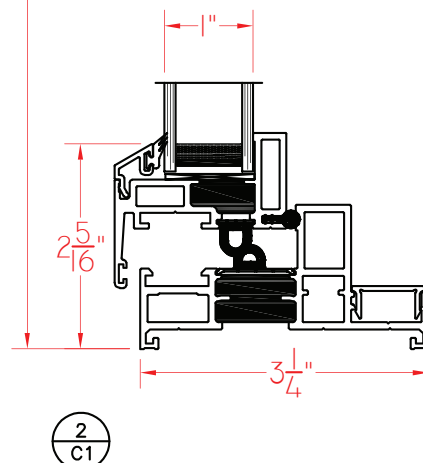
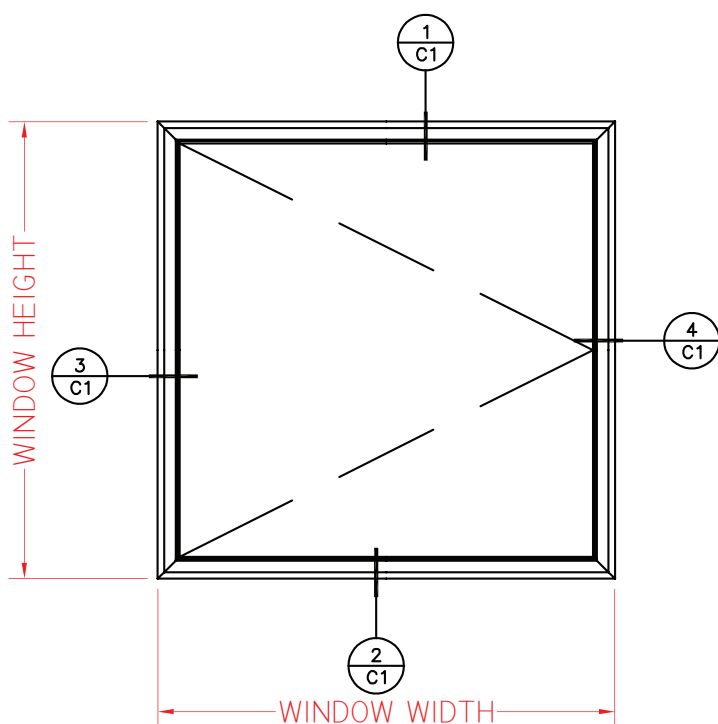
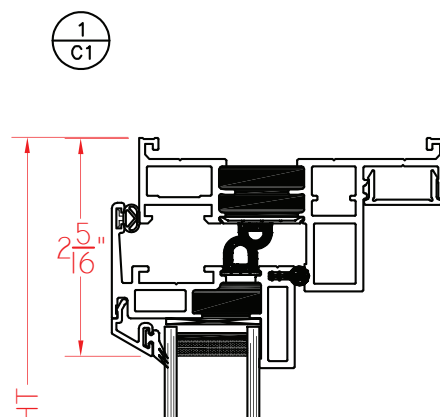
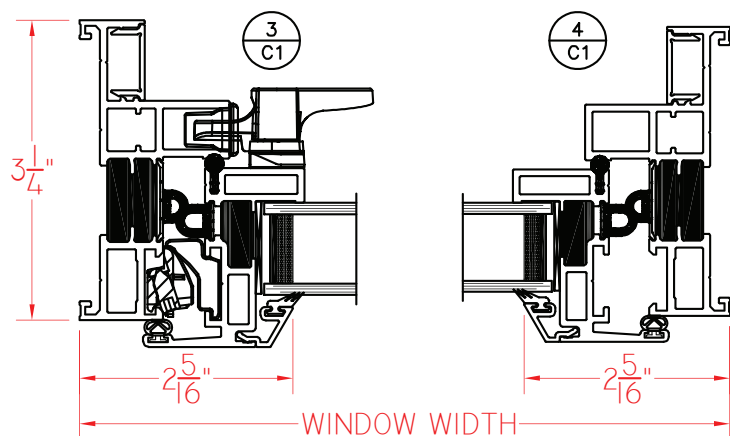


H450 Series 3 1/4" Frame Depth Casement

H450 Series Casement (Project-Out)

With Push-Out
Hardware and
Without Nailing Fin

This document contains confidential and proprietary information intended for the private use of Quaker.
© 2020 Quaker Window Products Co., All rights reserved.
Quaker reserves the right to change any/all designs without notice.

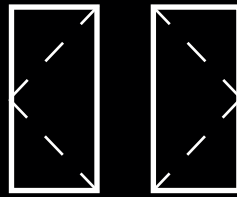


ELEVATION SCALE 3/4" = 1'-0"

Our products are tested to the standards of and certified by some of the foremost organizations in the fenestration industry.



SHEET C1
SCALE 1:2

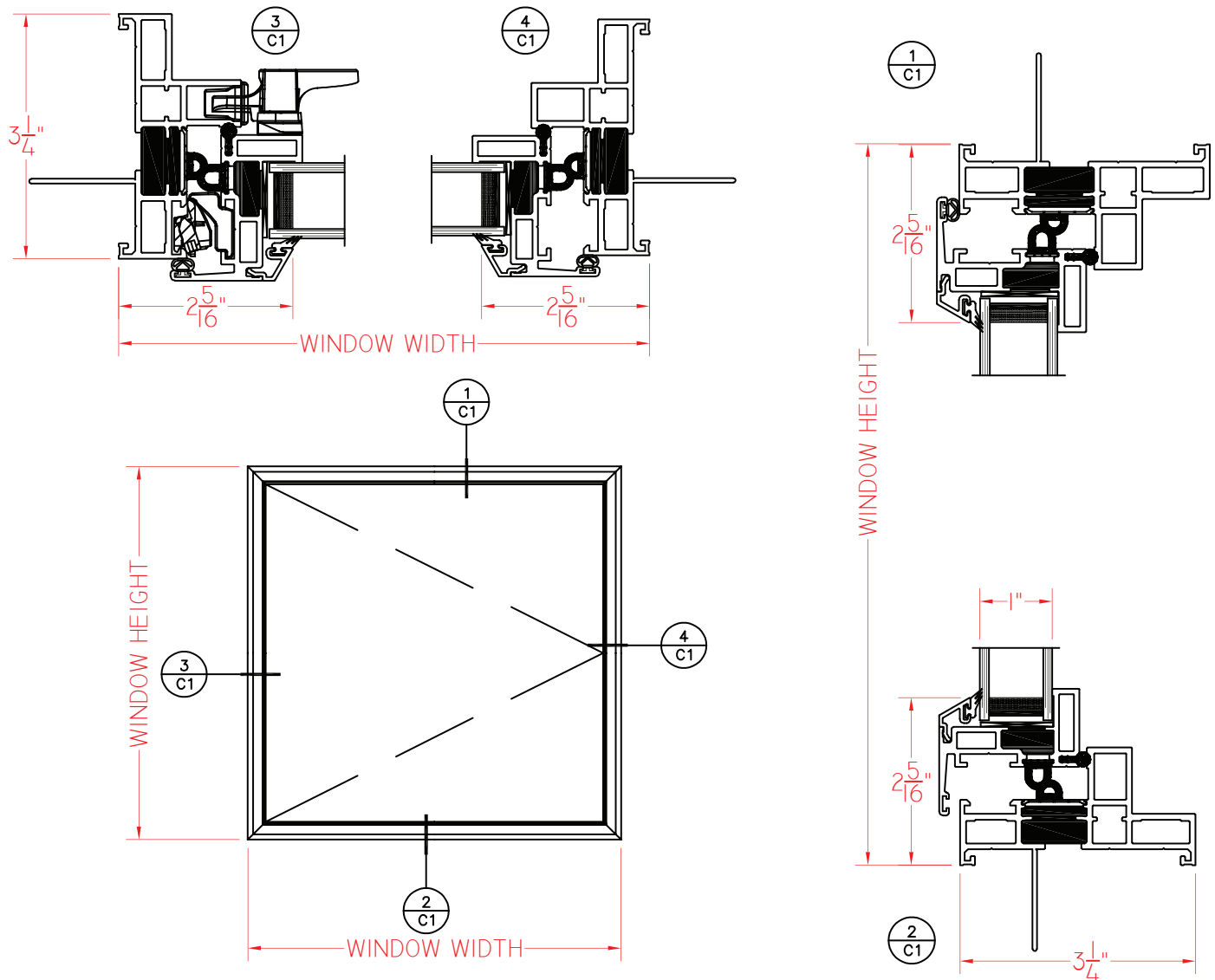


H450 Series 3 1/4" Frame Depth Casement

H450 Series Casement (Project-Out)

With Push-Out
Hardware and
Nailing Fin

This document contains confidential and proprietary information intended for the private use of Quaker.
© 2020 Quaker Window Products Co., All rights reserved.
Quaker reserves the right to change any/all designs without notice.

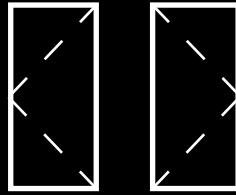


ELEVATION SCALE 3/4" = 1'-0"

SHEET C1
SCALE 1:2

Our products are tested to the standards of and certified by some of the foremost organizations in the fenestration industry.



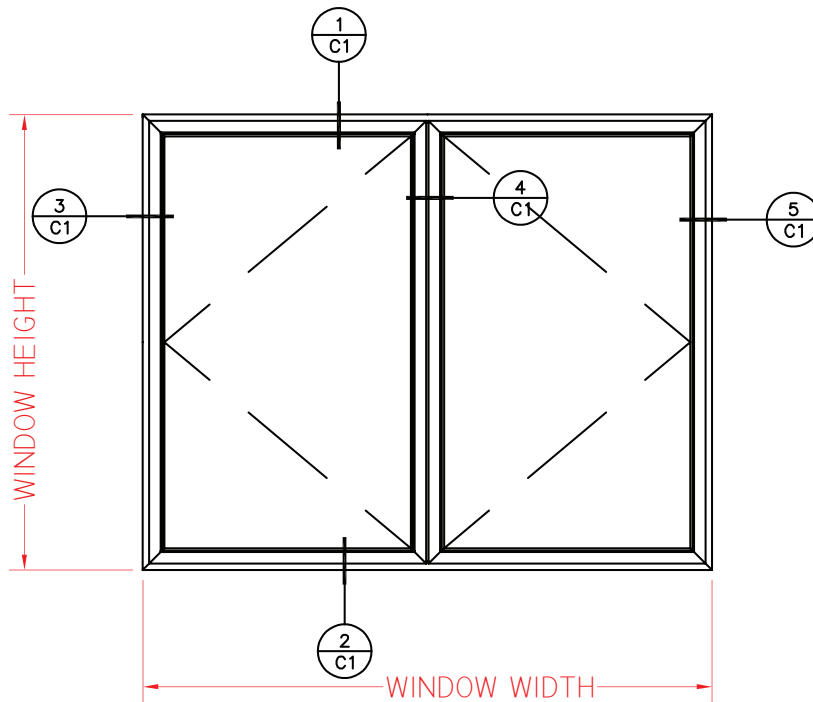
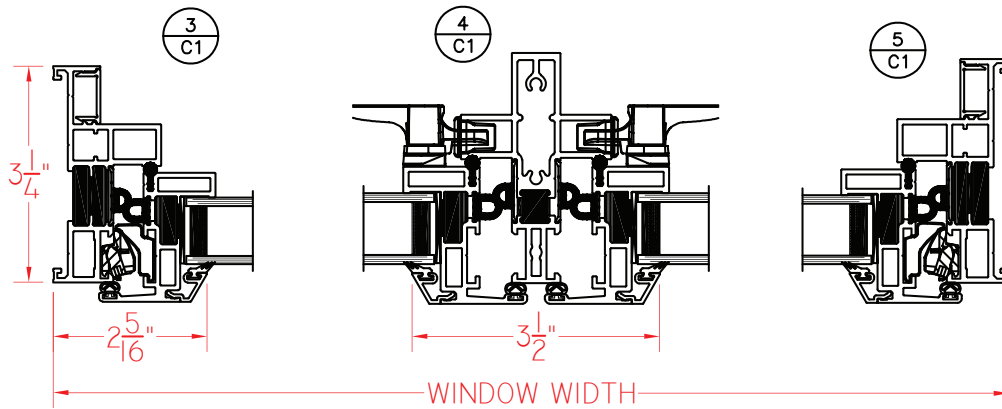


H450 Series 3 1/4" Frame Depth Casement

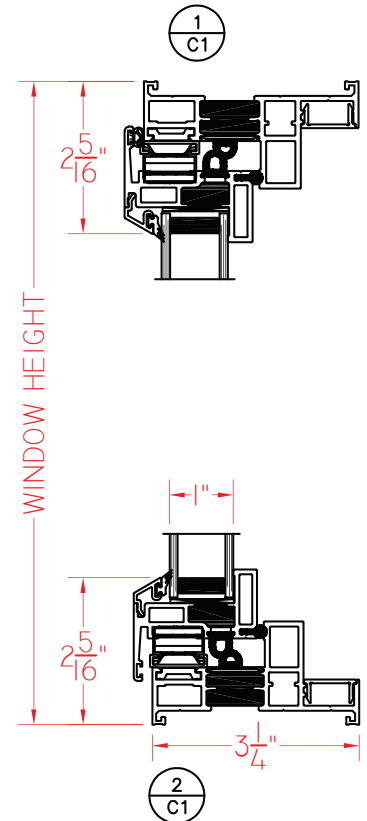
H450 Series Casement/Casement (Project-Out)

With Push-Out
Hardware and
Without Nailing Fin

This document contains confidential and proprietary information intended for the private use of Quaker.
© 2020 Quaker Window Products Co., All rights reserved.
Quaker reserves the right to change any/all designs without notice.



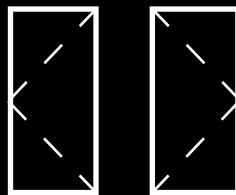
ELEVATION SCALE 3/4" = 1'-0"



SHEET C1
SCALE 1:2

Our products are tested to the standards of and certified by some of the foremost organizations in the fenestration industry.



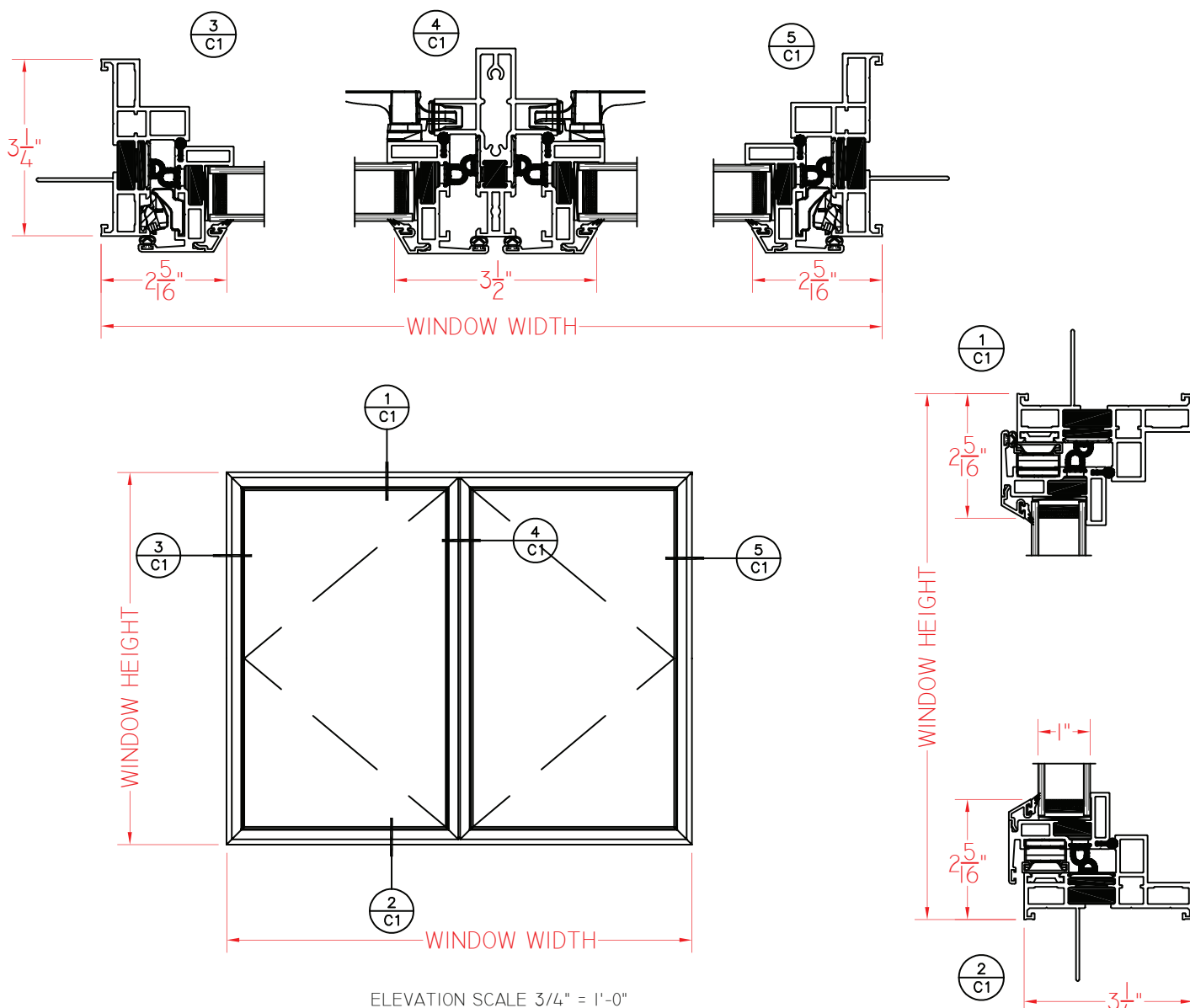


H450 Series 3 1/4" Frame Depth Casement

H450 Series Casement/Casement (Project-Out)

With Push-Out
Hardware and
Nailing Fin

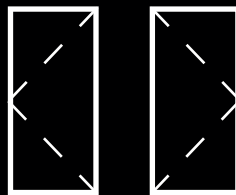
This document contains confidential and proprietary information intended for the private use of Quaker.
© 2020 Quaker Window Products Co., All rights reserved.
Quaker reserves the right to change any/all designs without notice.



SHEET C1
SCALE 1:2

Our products are tested to the standards of and certified by some of the foremost organizations in the fenestration industry.



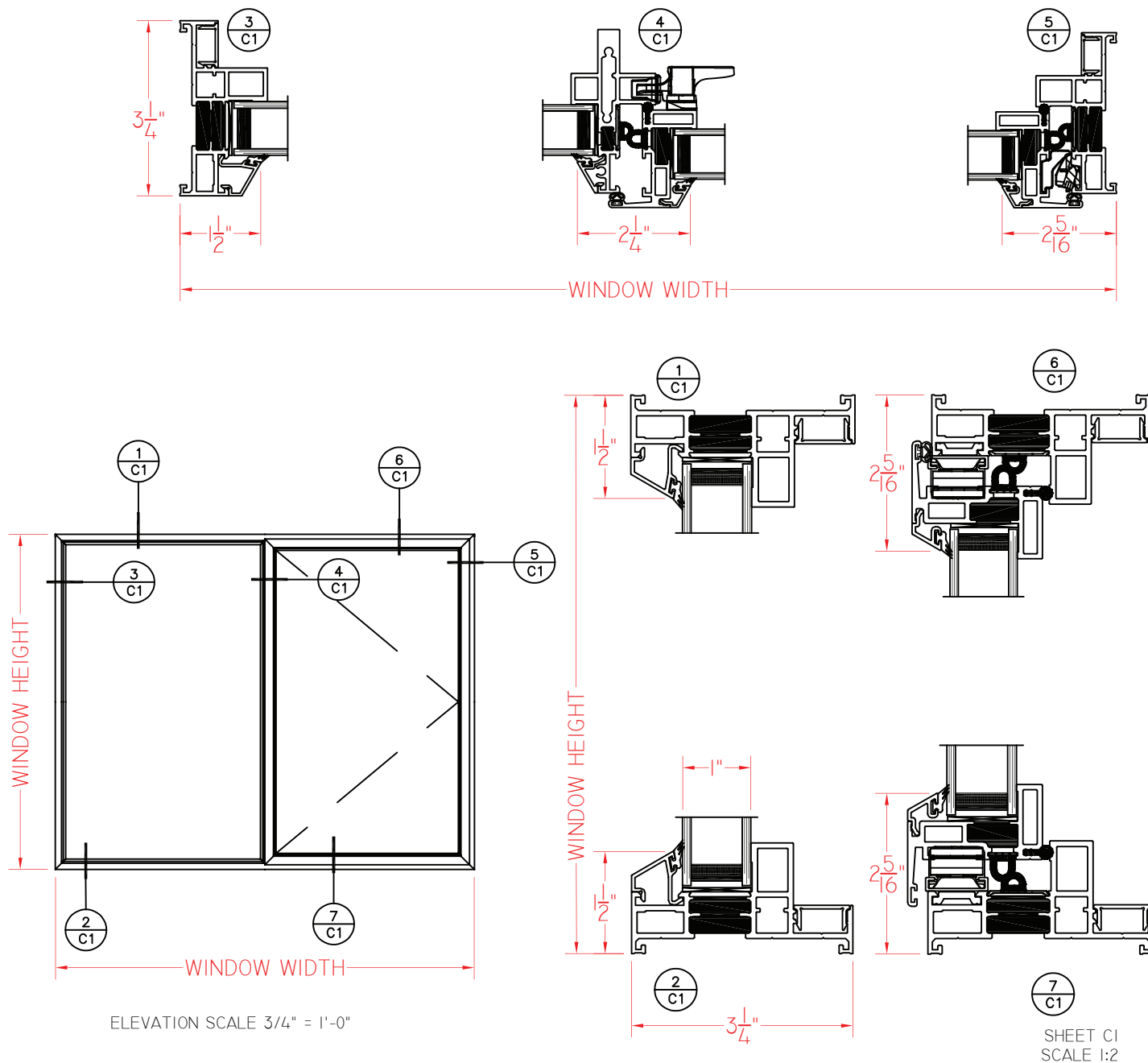


H450 Series 3 1/4" Frame Depth Casement

H450 Series Casement (Project-Out)/Fixed

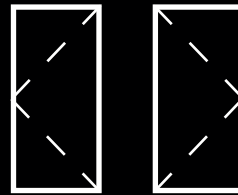
With Push-Out
Hardware and
Without Nailing Fin

This document contains confidential and proprietary information intended for the private use of Quaker.
© 2020 Quaker Window Products Co., All rights reserved.
Quaker reserves the right to change any/all designs without notice.



Our products are tested to the standards of and certified by some of the foremost organizations in the fenestration industry.



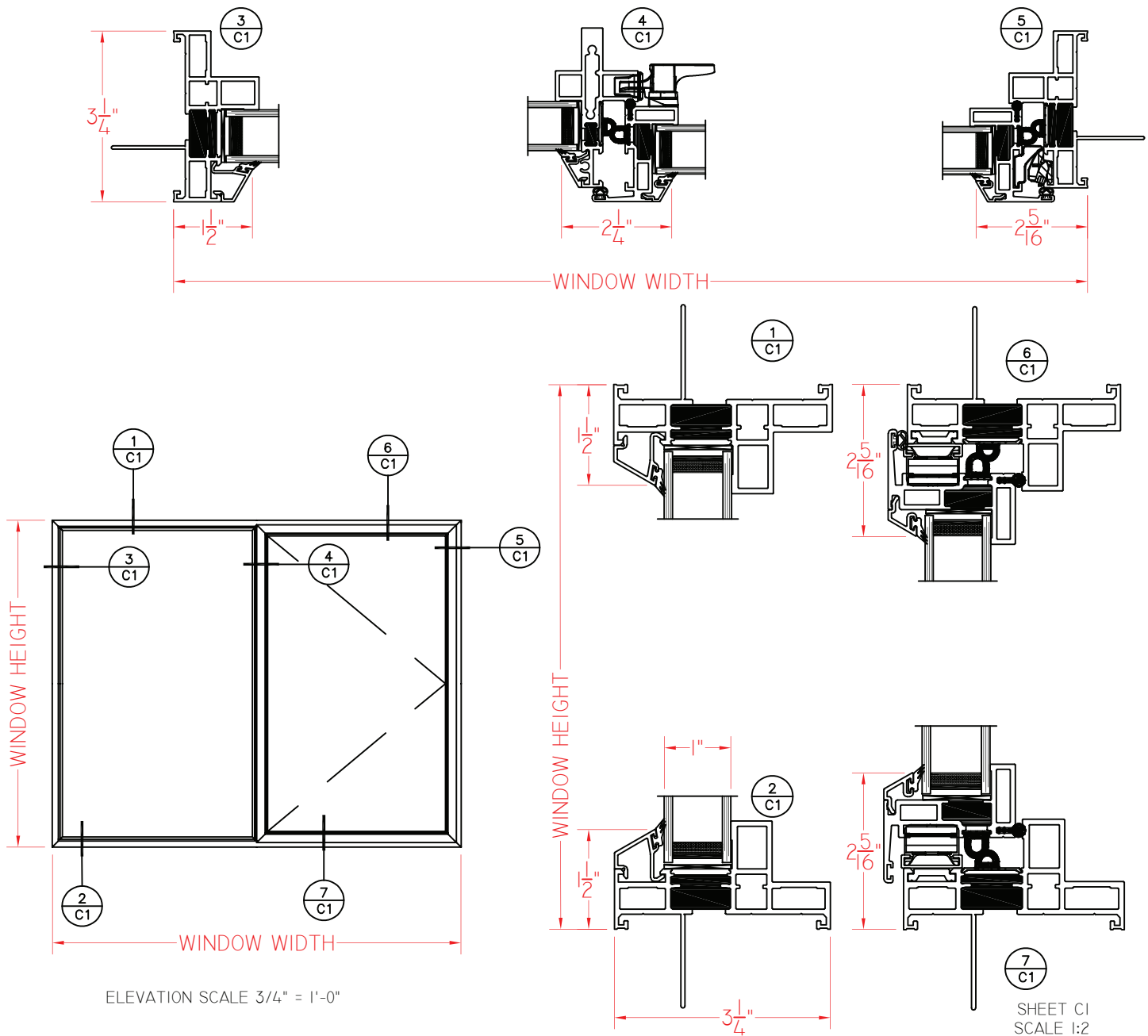


H450 Series 3 1/4" Frame Depth Casement

H450 Series Casement (Project-Out)/Fixed

With Push-Out
Hardware and
Nailing Fin

This document contains confidential and proprietary information intended for the private use of Quaker.
© 2020 Quaker Window Products Co., All rights reserved.
Quaker reserves the right to change any/all designs without notice.



Our products are tested to the standards of and certified by some of the foremost organizations in the fenestration industry.

