

M600 Series 3 1/4" Frame Depth Casement (Project-Out)

M600 Series Casement (Project-Out)

Features

- ◇ Commercial Framing System
 - 3 1/4" main frame
 - Sealable corner keys
 - Crimp/Screw connections
 - 0.094" wall thickness of interior and exterior walls, 0.070" wall thickness elsewhere
- ◇ Enhanced Design
 - Azo-braided channel receives Azon pour and debridge thermal break which is 1/2" wide in all main frame and vent rail extrusions
 - Clean squared edges
 - 3" narrow sitelines
- ◇ With or Without Integral Nailing Fin
- ◇ Glazing
 - 1" insulating glass
- ◇ Hardware
 - Heavy-commercial Truth Contour™ locking system (Crank-out only)
 - Low profile cam handle (Push-out only)
 - Crank-out available (4-Bar hinges or butt hinges)
 - Push-out available (4-Bar hinges)
- ◇ Screen
 - Standard screens (Crank-out only)
- ◇ Meets ADA Requirements (ADA Handle Required, Crank-out only)

Options

- ◇ Available Configurations
 - Project-out Casement
 - Push-out or Crank-out (Left or Right)
 - Continuous frame capabilities
- ◇ Muntin Choices
 - Internal or simulated divided lites available
- ◇ Limited travel hardware
- ◇ Glazing
 - Multiple Low-E and argon glazing choices
 - Triple glazing (Energy TG)
 - Capillary tubes
 - Wide variety of glazing, tinting and thickness options
- ◇ Panning & Trim Choices
 - Wide variety of panning, receptor and trim available
- ◇ Mulling
 - Wide variety of structural mulls

Benefits

- ◇ The capacity to match exterior colors for unique project facades
- ◇ The ability to facilitate large sizes for taller and wider window openings
- ◇ Modern appearance merged with superior structural integrity

Performance

- ◇ Structural & Thermal (test reports or thermal simulations available upon request)

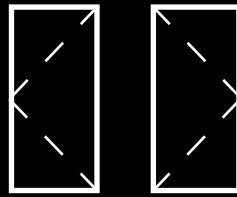
Model	Casement (Project-Out)
Test Sizes	36" x 60"
NAFS Rating	AW-70
Air Infiltration (cfm/ft ²)	<0.10
Water (No Penetration) P.S.F.	up to 15
CR (Condensation Resistance)	29-47
U-Value (ranges based on multiple Low-E/Argon combinations)	0.32-0.57
SHGC (ranges based on multiple Low-E/Argon combinations)	
STC/OITC (ranges are based on the use of multiple glass pane thicknesses)	29-43/23-34

Operating Force: 6 lbf (maintain motion), 8 lbf (latches), 3 lbf (ADA Handle)

Due to periodic re-certification requirements, result shown may vary.

Our products are tested to the standards of and certified by some of the foremost organizations in the fenestration industry.



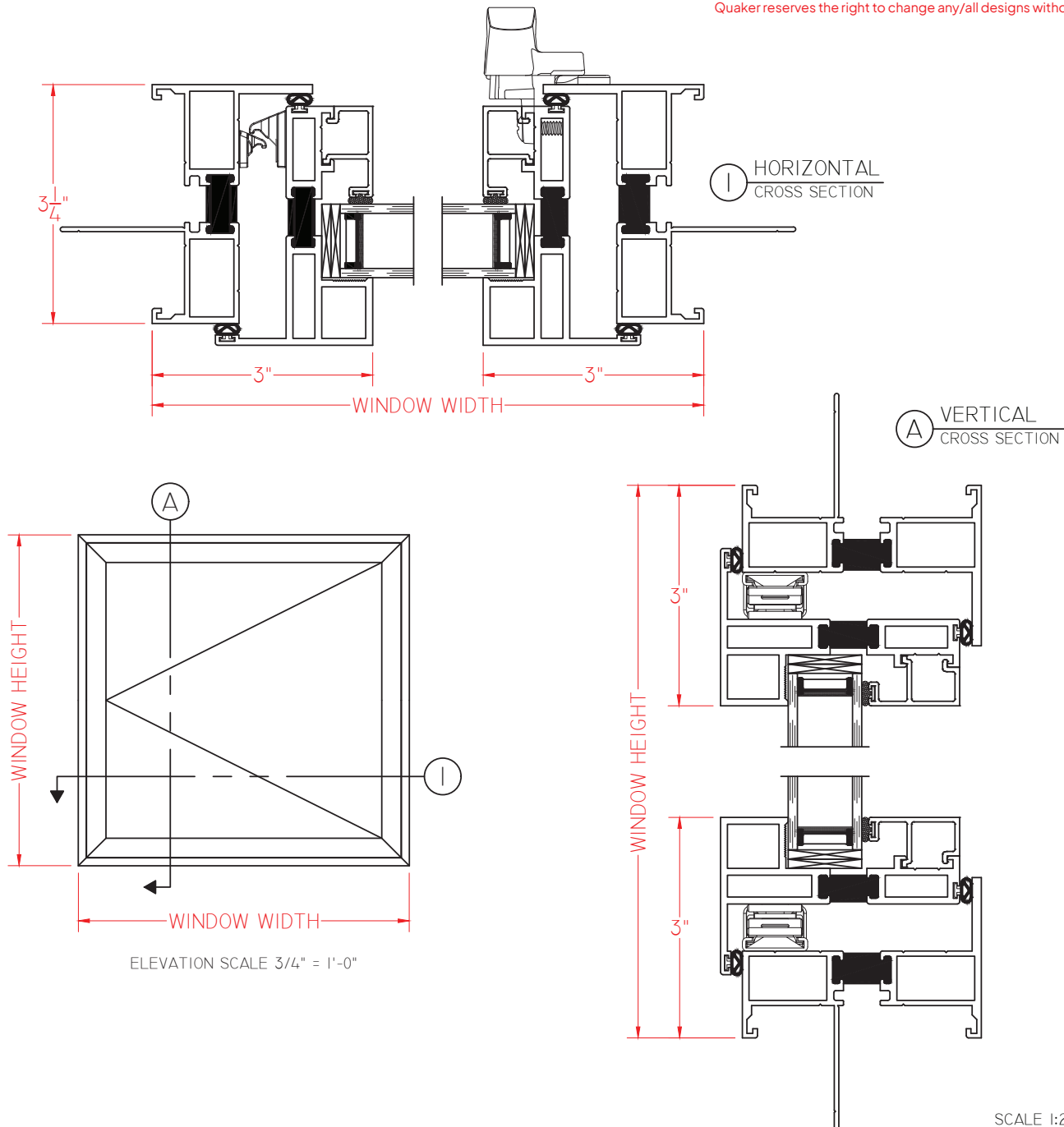


M600 Series 3 1/4" Frame Depth Casement (Project-Out)

M600 Series Casement (Project-Out)

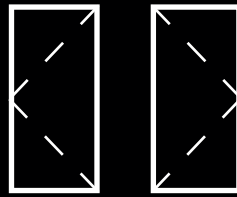
Shown with Push-Out
Hardware and Nailing Fin

This document contains confidential and proprietary information
intended for the private use of Quaker.
© 2016 Quaker Window Products Co., All rights reserved.
Quaker reserves the right to change any/all designs without notice.



Our products are tested to the standards of and
certified by some of the foremost organizations
in the fenestration industry.



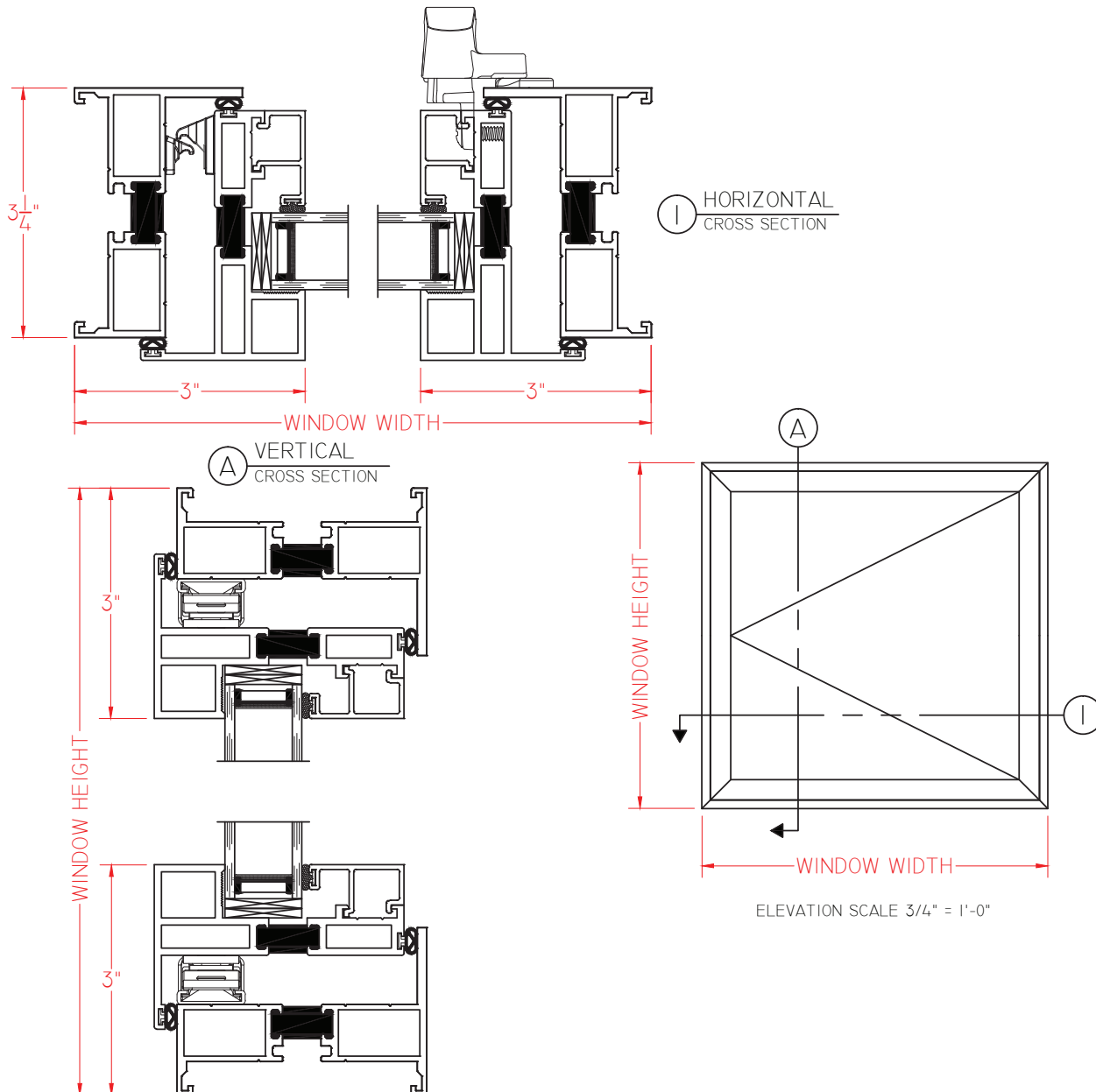


M600 Series 3 1/4" Frame Depth Casement (Project-Out)

M600 Series Casement (Project-Out)

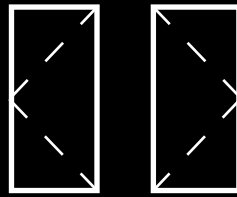
Shown with Push-Out
Hardware and without
Nailing Fin

This document contains confidential and proprietary information intended for the private use of Quaker.
© 2016 Quaker Window Products Co., All rights reserved.
Quaker reserves the right to change any/all designs without notice.



Our products are tested to the standards of and certified by some of the foremost organizations in the fenestration industry.



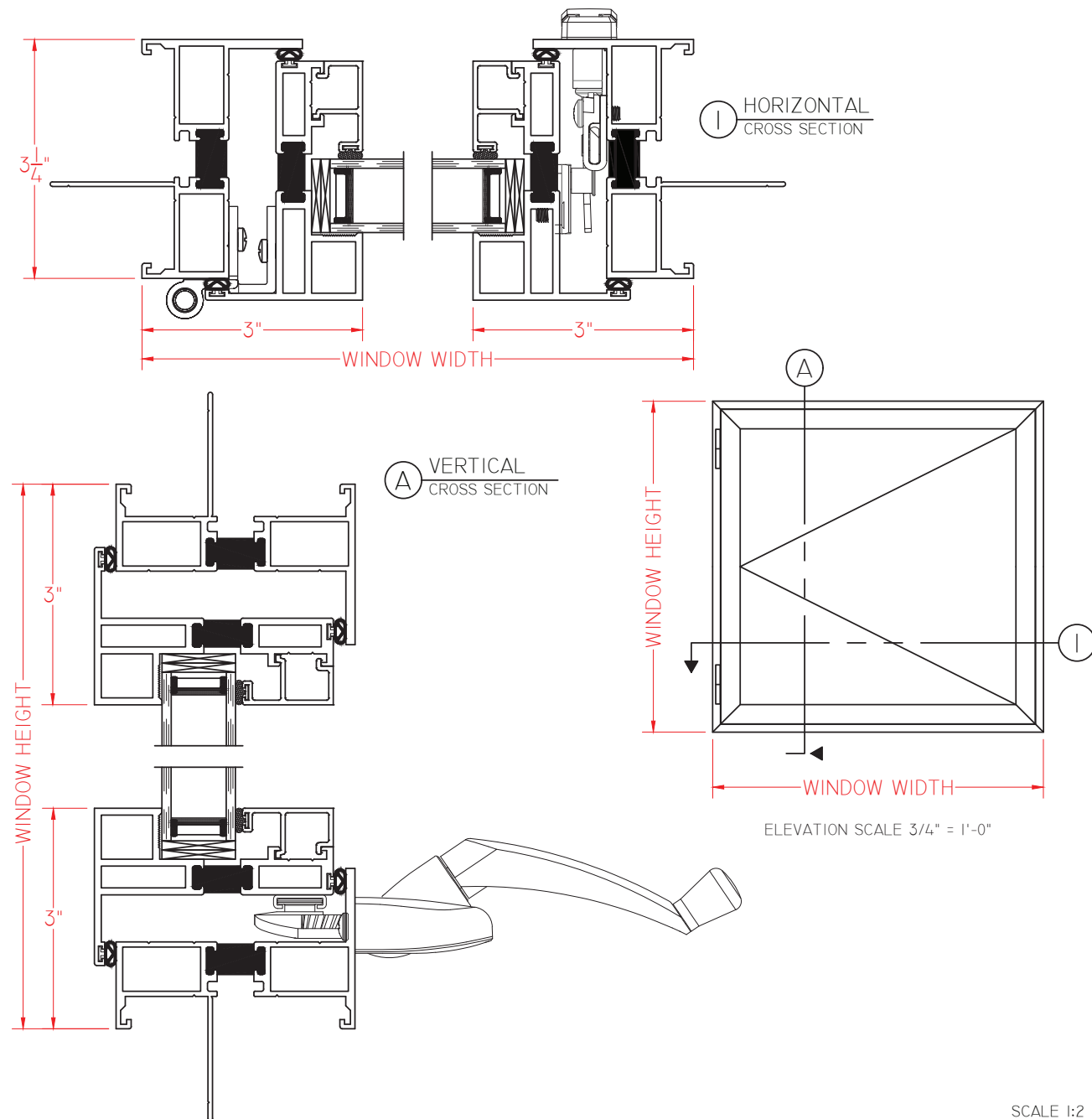


M600 Series 3 1/4" Frame Depth Casement (Project-Out)

M600 Series Casement (Project-Out)

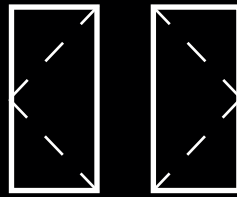
Shown with Roto
Hardware and Nailing Fin

This document contains confidential and proprietary information intended for the private use of Quaker.
© 2016 Quaker Window Products Co., All rights reserved.
Quaker reserves the right to change any/all designs without notice.



Our products are tested to the standards of and certified by some of the foremost organizations in the fenestration industry.



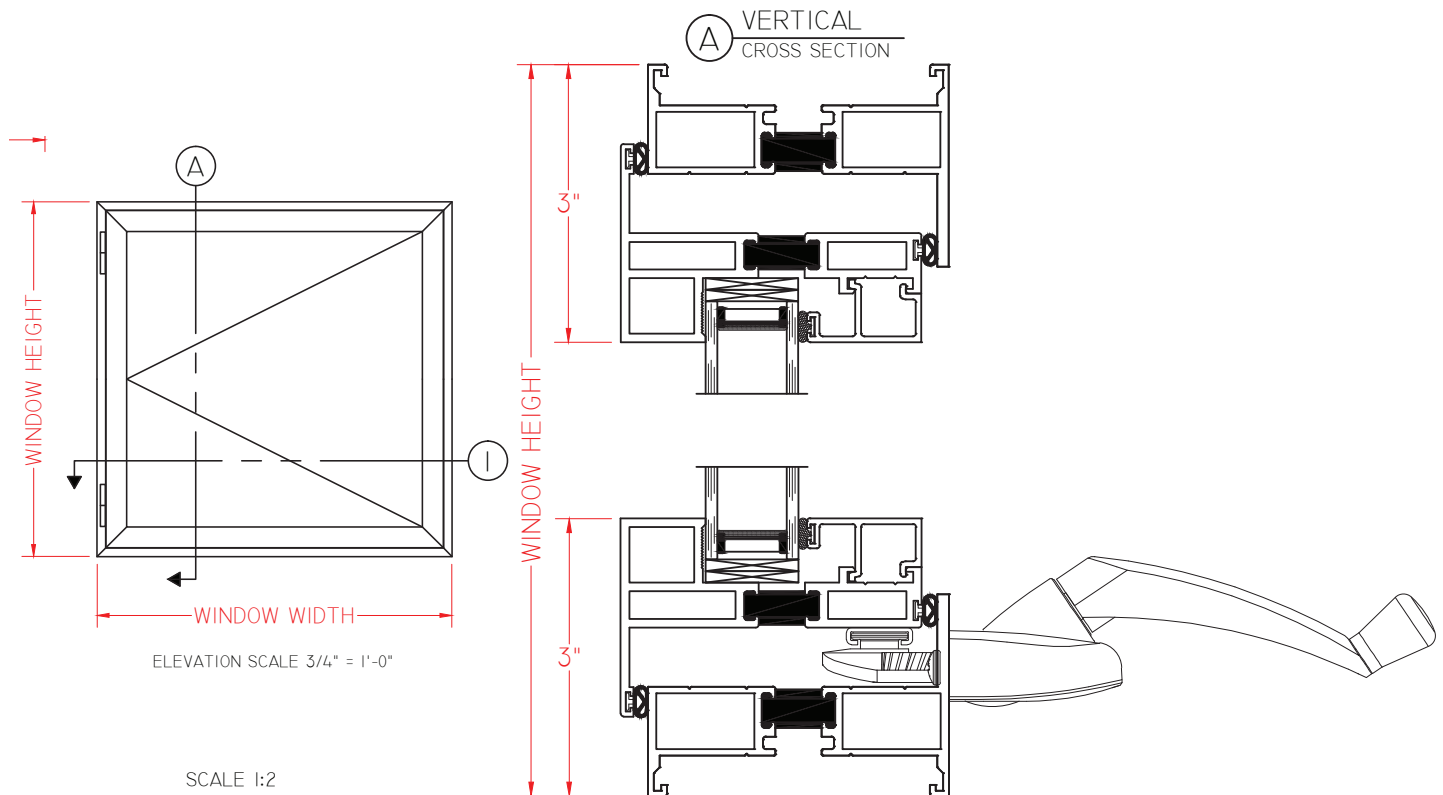
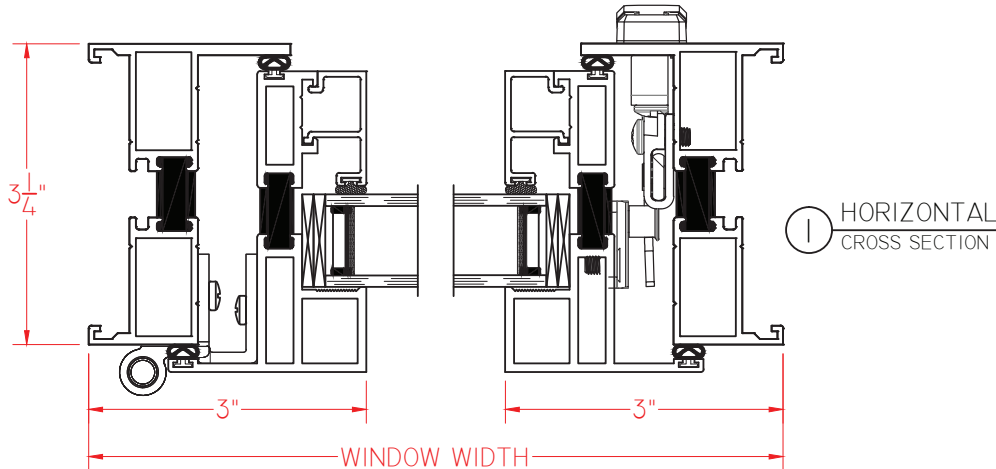


M600 Series 3 1/4" Frame Depth Casement (Project-Out)

M600 Series Casement (Project-Out)

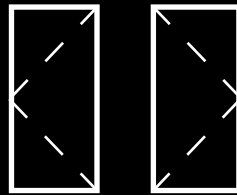
Shown with Roto
Hardware and without
Nailing Fin

This document contains confidential and proprietary information
intended for the private use of Quaker.
© 2016 Quaker Window Products Co., All rights reserved.
Quaker reserves the right to change any/all designs without notice.



Our products are tested to the standards of and
certified by some of the foremost organizations
in the fenestration industry.





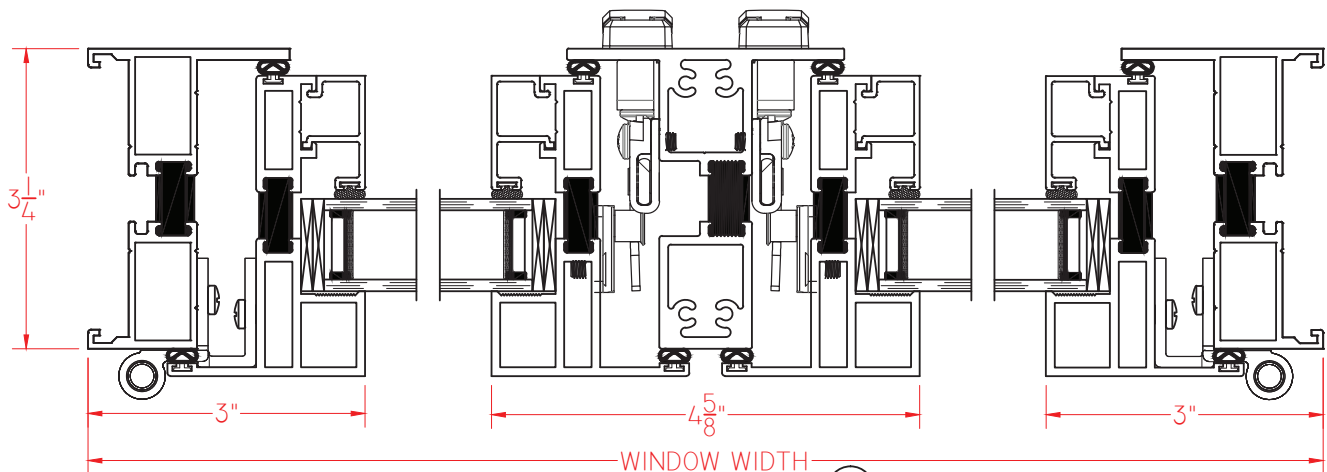
M600 Series 3 1/4" Frame Depth Casement (Project-Out)

M600 Series Casement/Casement (Project-Out)

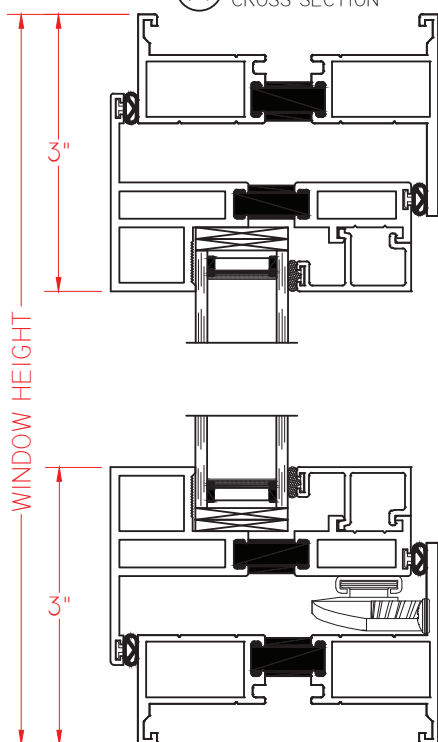
Shown with Roto
Hardware and
without Nailing Fin

This document contains confidential and proprietary information intended for the private use of Quaker.
© 2016 Quaker Window Products Co., All rights reserved.
Quaker reserves the right to change any/all designs without notice.

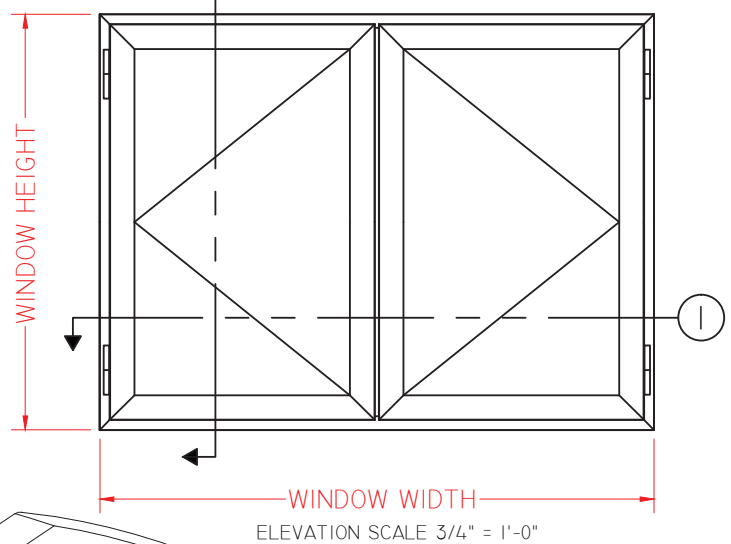
① HORIZONTAL
CROSS SECTION



Ⓐ VERTICAL
CROSS SECTION



Ⓐ



Our
certified by some of the foremost organizations
in the fenestration industry.



SCALE 1:2