



C600/C605 Series 4 1/8" Frame Depth Fixed (Picture Window)

C600/C605 Series Fixed (Picture Window)

Features

- ♦ **Framing System**
 - Patented OptiCore Technology
 - 4 1/8" architectural grade aluminum frame
 - Dual Euro-Groove frame system
- ♦ **Enhanced Design**
 - Azo-Core Thermal Barrier System for reduced thermal-conductivity and increased energy-efficiency
 - Modern, squared frame glazing (C600 Series) or Traditional/Historic beveled frame glazing (C605 Series)
 - 1 5/8" narrow sitelines
 - With or without Integral Nailing Fin
- ♦ **Glazing**
 - 1" insulating glass
 - Dual-sealed Warm Edge Super Spacer system

Benefits

- ♦ Capacity to match exterior colors for unique project facades
- ♦ Two-tone capabilities with a color to match the building interior and another to match the exterior
- ♦ Maximum sizing affords the facilitation of large sizes for taller and wider window openings
- ♦ Thermal performances never thought achievable in aluminum windows

Performance

- ♦ Structural & Thermal (test reports available upon request)

Model	Fixed (Picture Window)
NAFS Rating	AW-100
Test Size	60" x 99"
Design Pressure (P.S.F.)	100
Air Infiltration (cfm/ft ²)	<0.10
Water Resistance (P.S.F.)	15
CR (Condensation Resistance)	47-77
U-Value (ranges based on multiple Low-E/ Argon combinations)	0.15-0.30
SHGC (ranges based on multiple Low-E/Argon combinations)	0.13-0.57
OITC/STC (ranges are based on the use of multiple glass pane thicknesses)	28-35 / 28-41

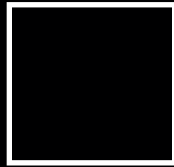
Due to periodic re-certification requirements, result shown may vary.

Options

- ♦ **Available Configurations**
 - Fixed
 - Continuous frame capabilities
- ♦ **Enhanced Design**
 - If using wire-frame set-up with an operating unit as part of the design, 2 7/8" casement framing will be used
- ♦ **Muntin Choices**
 - Internal or simulated divided lites available
- ♦ **Glazing**
 - Multiple Low-E and argon glazing choices
 - Impact-rated glazing package
 - Glazing pocket can accept up to 1 3/8" insulating glass for sound attenuation purposes
 - Triple glazing
 - WACI Blind System
 - Capillary tubes
 - Wide variety of tinting and pane thickness options
- ♦ **Panning & Trim Choices**
 - Wide variety of panning, receptor and trim available
- ♦ **Mulling**
 - Wide variety of structural mulls

Our products are tested to the standards of and certified by some of the foremost organizations in the fenestration industry.



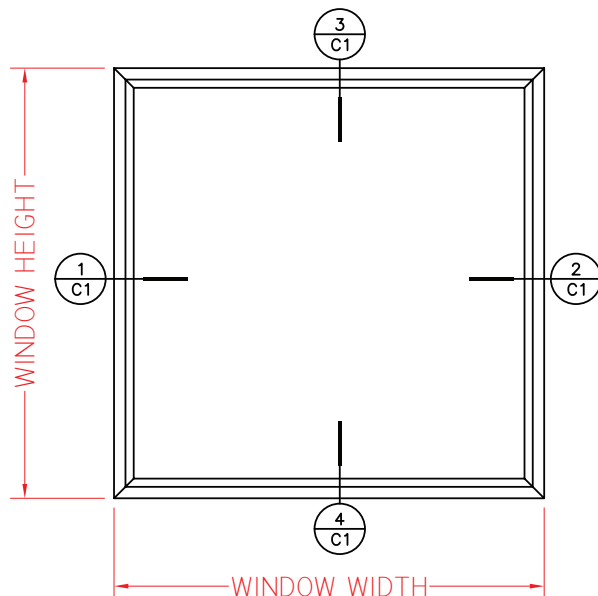
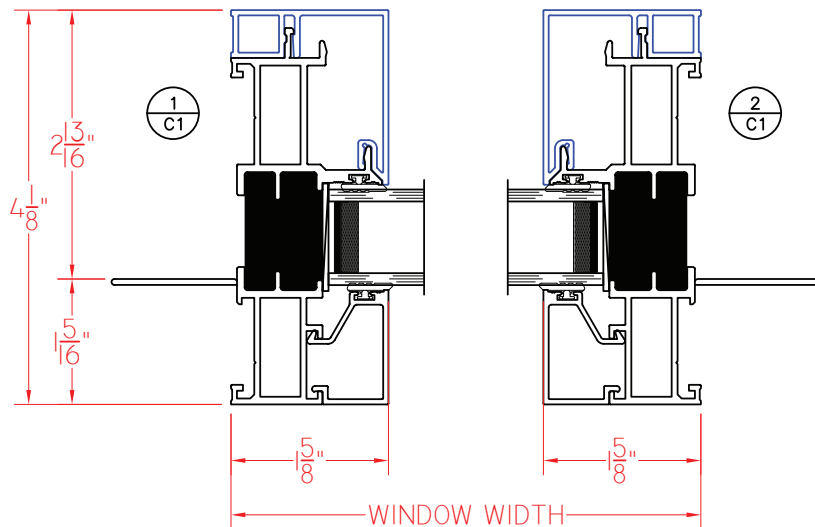


C600 Series 4 1/8" Frame Depth Fixed (Picture Window)

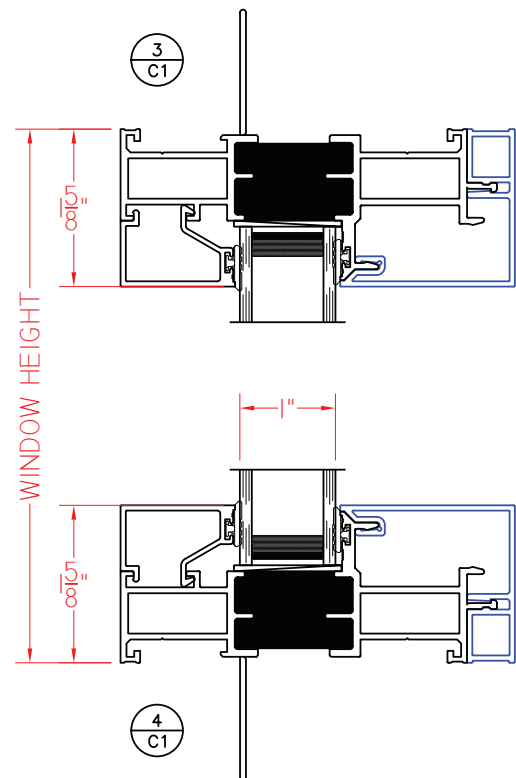
C600 Series Fixed (Picture Window)

Shown with Nailing Fin and
Square Glazing Stops

This document contains confidential and proprietary information
intended for the private use of Quaker.
© 2019 Quaker Window Products Co., Inc. All rights reserved.
Quaker reserves the right to change any/all designs without notice.



ELEVATION SCALE 3/4" = 1'-0"



Our products are tested to the standards of and
certified by some of the foremost organizations
in the fenestration industry.



WINDOW & DOOR
MANUFACTURERS ASSOCIATION
WDMA
M E M B E R

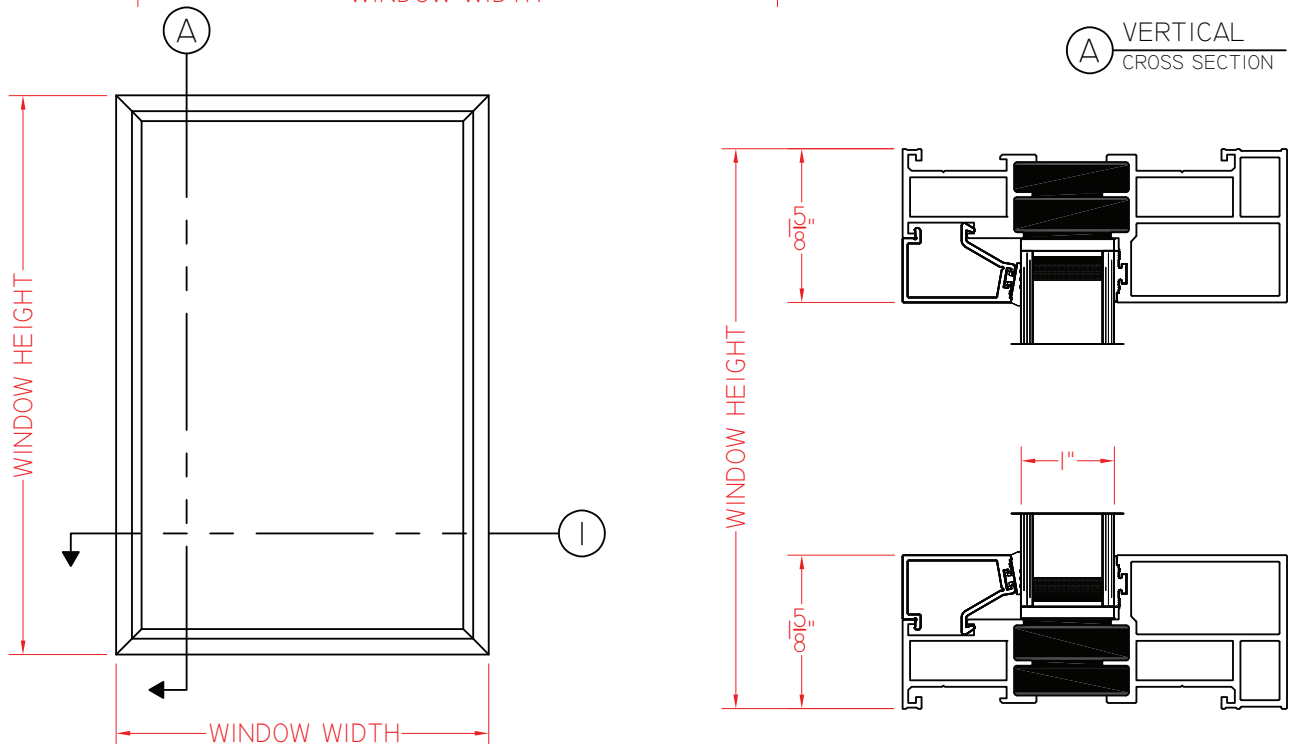
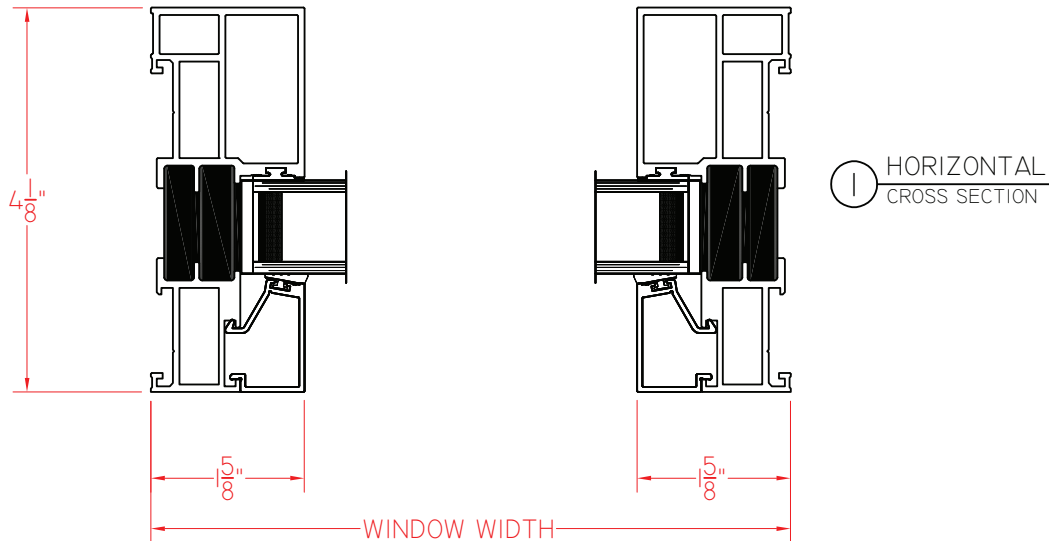


C600 Series 4 1/8" Frame Depth Fixed (Picture Window)

C600 Series Fixed (Picture Window)

Shown without Nailing Fin
and Square Glazing Stops

This document contains confidential and proprietary information
intended for the private use of Quaker.
© 2019 Quaker Window Products Co., Inc. All rights reserved.
Quaker reserves the right to change any/all designs without notice.



ELEVATION SCALE 1" = 1'-0"

Our products are tested to the standards of and
certified by some of the foremost organizations
in the fenestration industry.



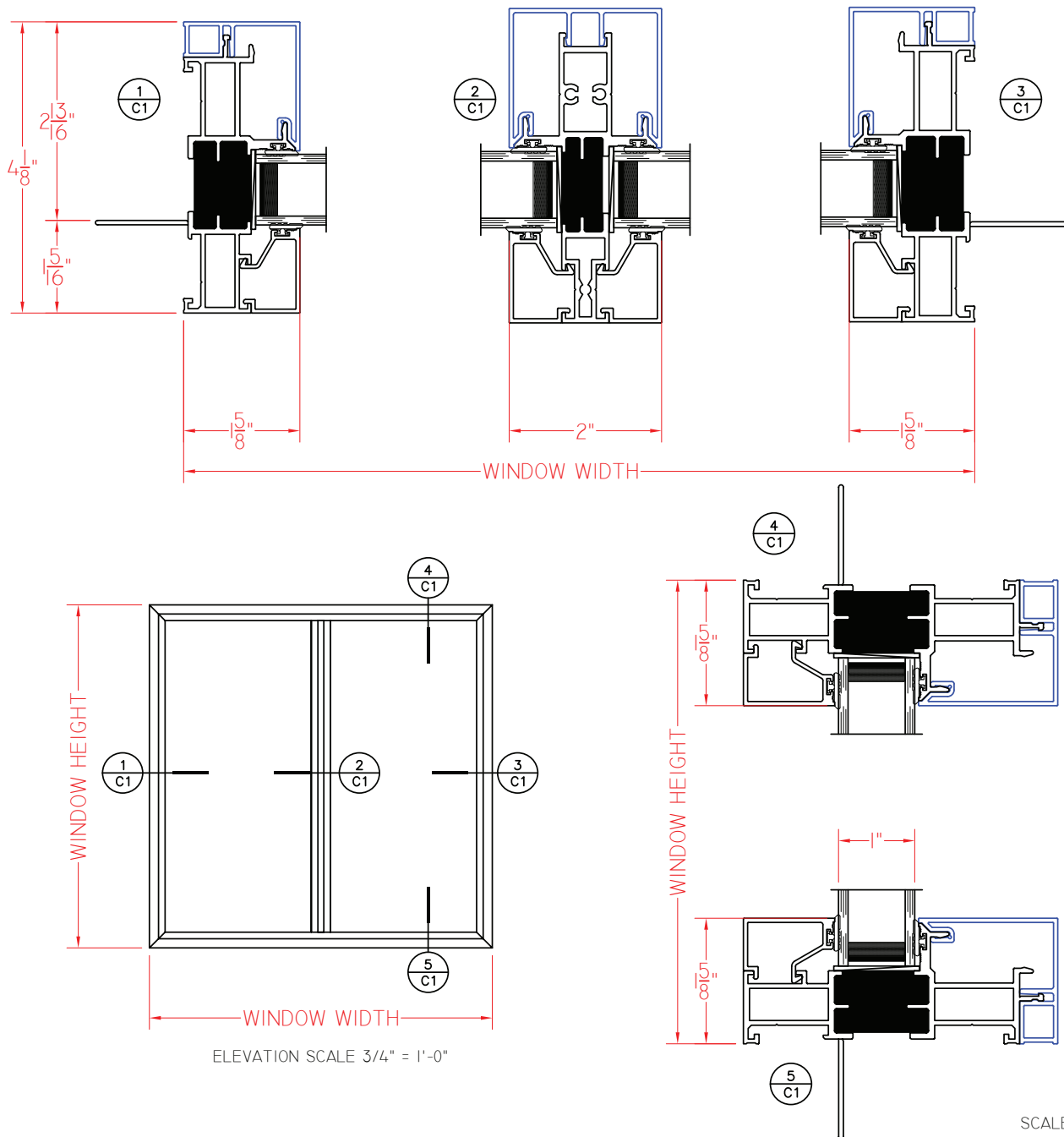


C600 Series 4 1/8" Frame Depth Fixed (Picture Window)

C600 Series Fixed/Fixed (Picture Window)

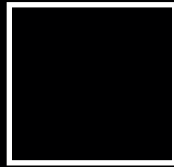
Shown with Nailing Fin and
Square Glazing Stops

This document contains confidential and proprietary information
intended for the private use of Quaker.
© 2019 Quaker Window Products Co., Inc. All rights reserved.
Quaker reserves the right to change any/all designs without notice.



Our products are tested to the standards of and
certified by some of the foremost organizations
in the fenestration industry.



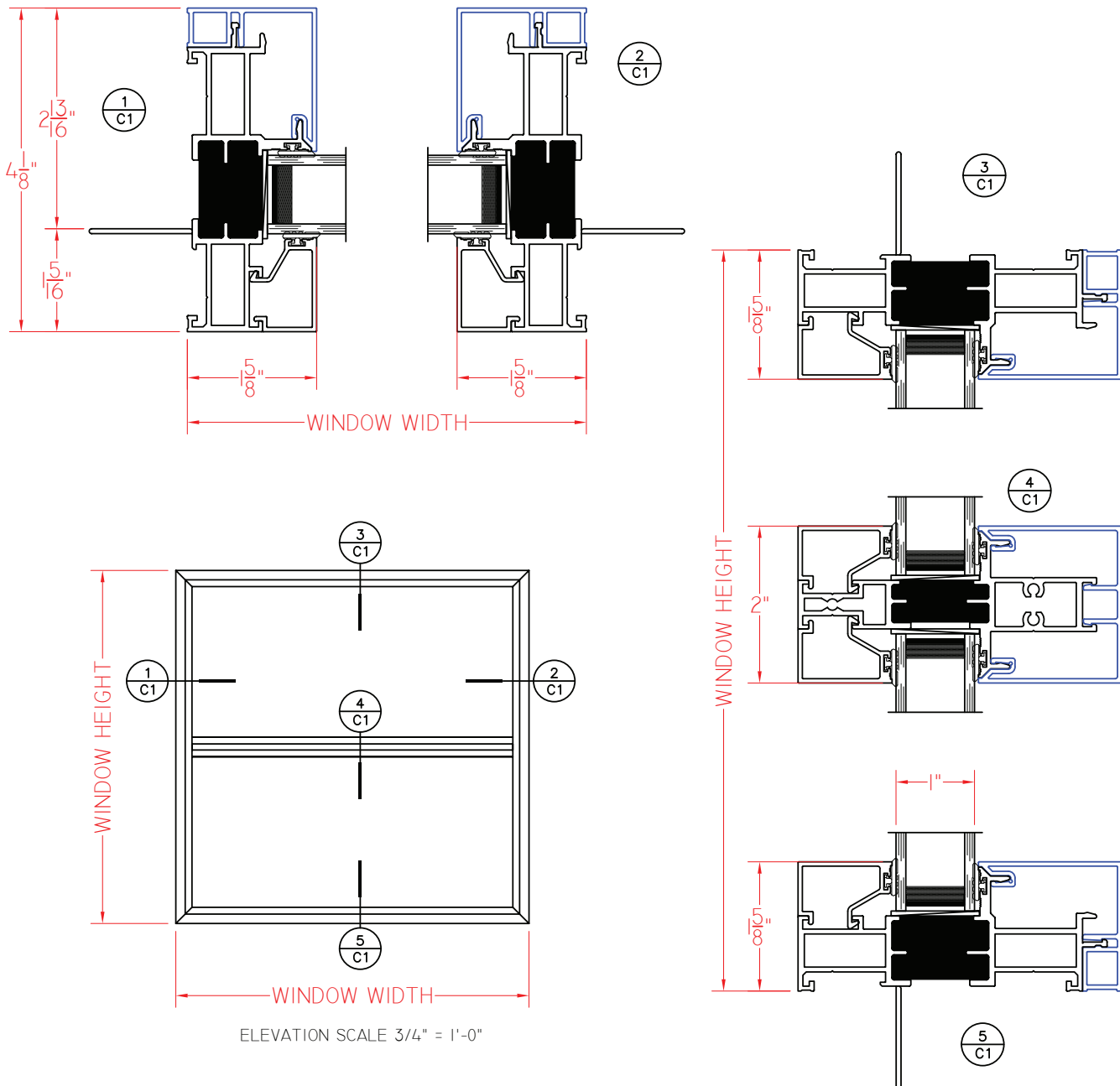


C600 Series 4 1/8" Frame Depth Fixed (Picture Window)

C600 Series Fixed/Fixed (Picture Window)

Shown with Nailing Fin and
Square Glazing Stops

This document contains confidential and proprietary information
intended for the private use of Quaker.
© 2019 Quaker Window Products Co., Inc. All rights reserved.
Quaker reserves the right to change any/all designs without notice.



SCALE 1:2

Our products are tested to the standards of and
certified by some of the foremost organizations
in the fenestration industry.

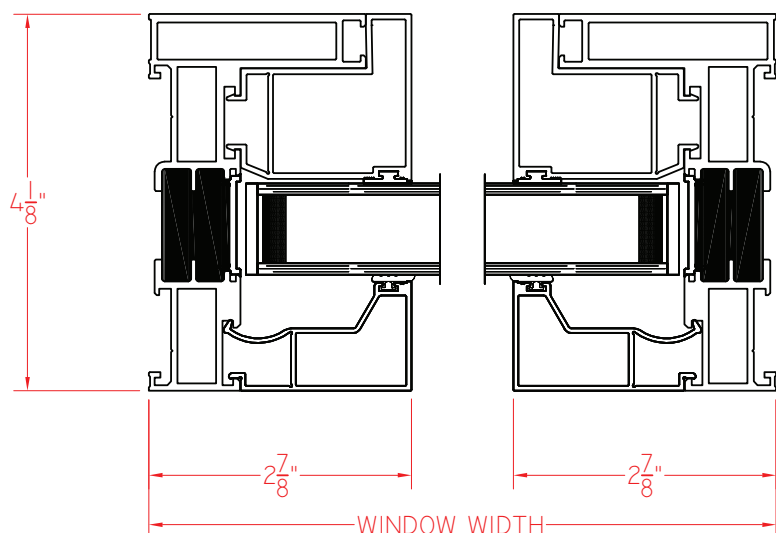




C600 Series Fixed (Picture Window)

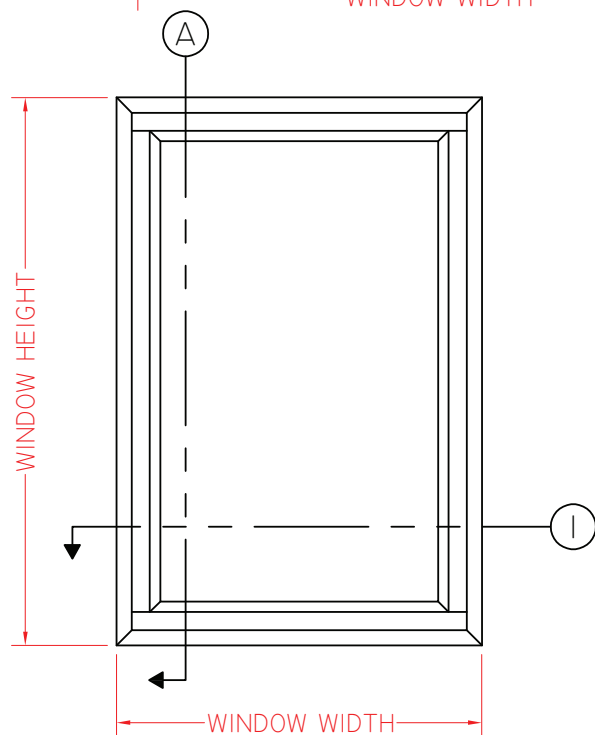
Shown without Nailing Fin
and Square Glazing Stops

This document contains confidential and proprietary information
intended for the private use of Quaker.
© 2019 Quaker Window Products Co., Inc. All rights reserved.
Quaker reserves the right to change any/all designs without notice.

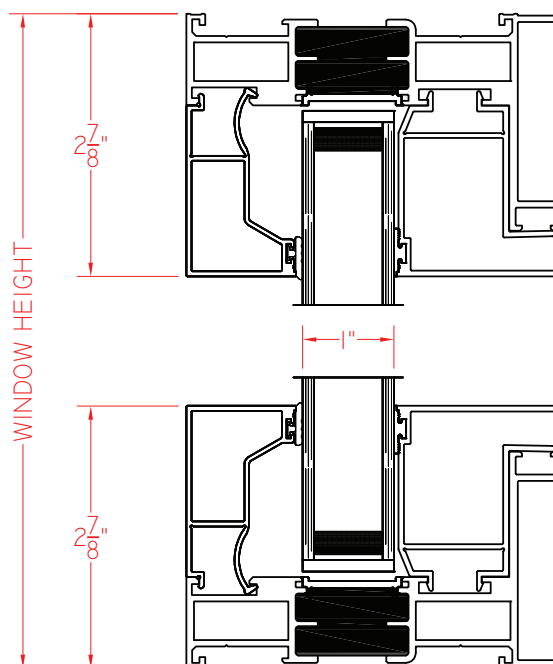


① HORIZONTAL
CROSS SECTION

Ⓐ VERTICAL
CROSS SECTION

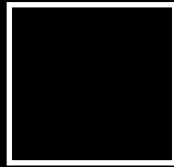


ELEVATION SCALE 1" = 1'-0"



Our products are tested to the standards of and
certified by some of the foremost organizations
in the fenestration industry.



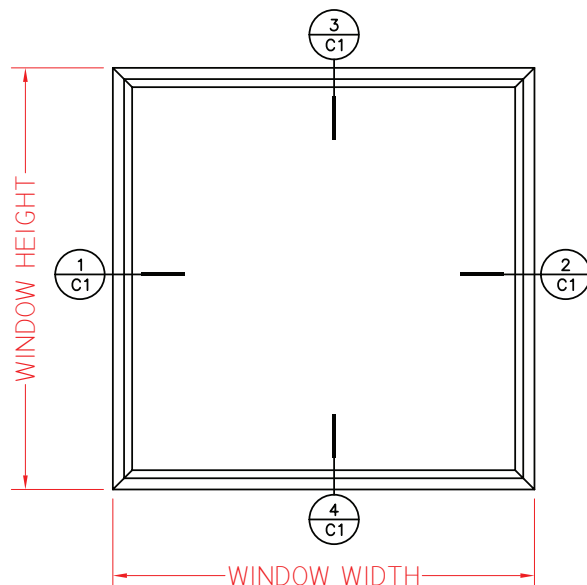
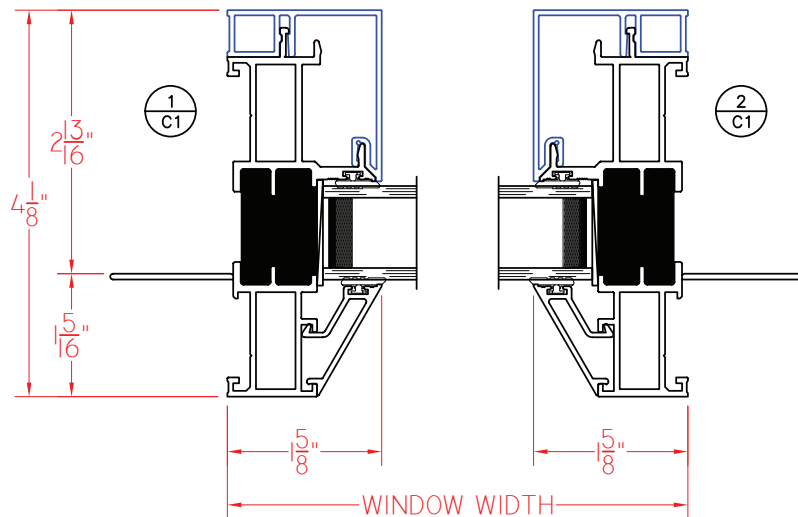


C605 Series 4 1/8" Frame Depth Fixed (Picture Window)

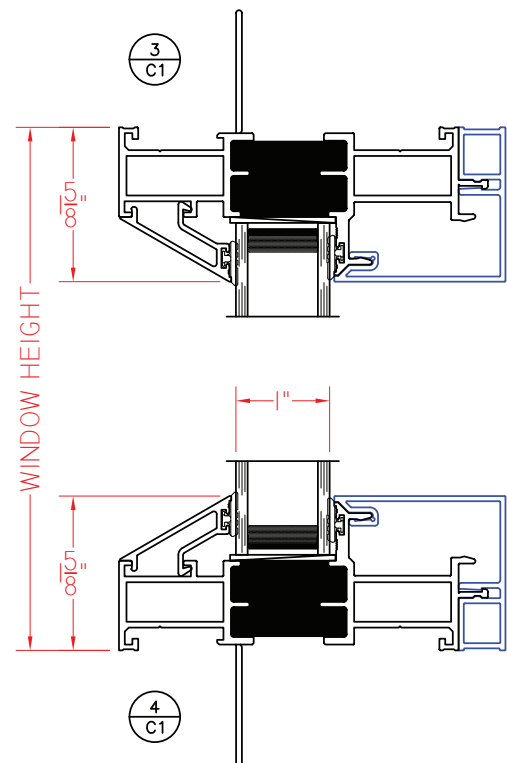
C605 Series Fixed (Picture Window)

Shown with Nailing Fin and
Beveled Glazing Stops

This document contains confidential and proprietary information
intended for the private use of Quaker.
© 2019 Quaker Window Products Co., Inc. All rights reserved.
Quaker reserves the right to change any/all designs without notice.



ELEVATION SCALE 3/4" = 1'-0"



SCALE 1:2

Our products are tested to the standards of and
certified by some of the foremost organizations
in the fenestration industry.



WINDOW & DOOR
MANUFACTURERS ASSOCIATION
WDMA
M E M B E R

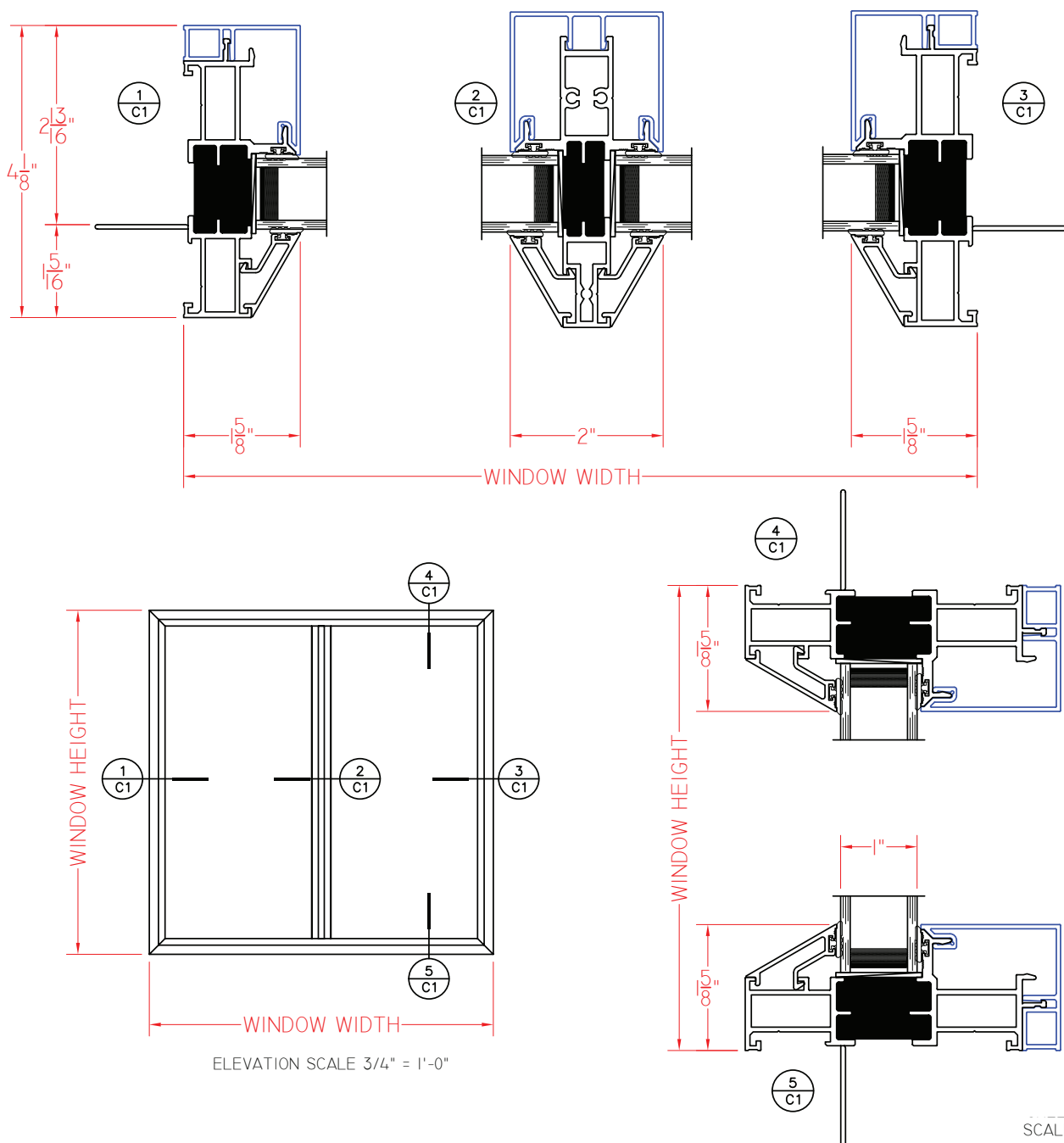


C605 Series 4 1/8" Frame Depth Fixed (Picture Window)

C605 Series Fixed/Fixed (Picture Window)

Shown with Nailing Fin and
Beveled Glazing Stops

This document contains confidential and proprietary information intended for the private use of Quaker.
© 2019 Quaker Window Products Co., Inc. All rights reserved.
Quaker reserves the right to change any/all designs without notice.



Our products are tested to the standards of and certified by some of the foremost organizations in the fenestration industry.



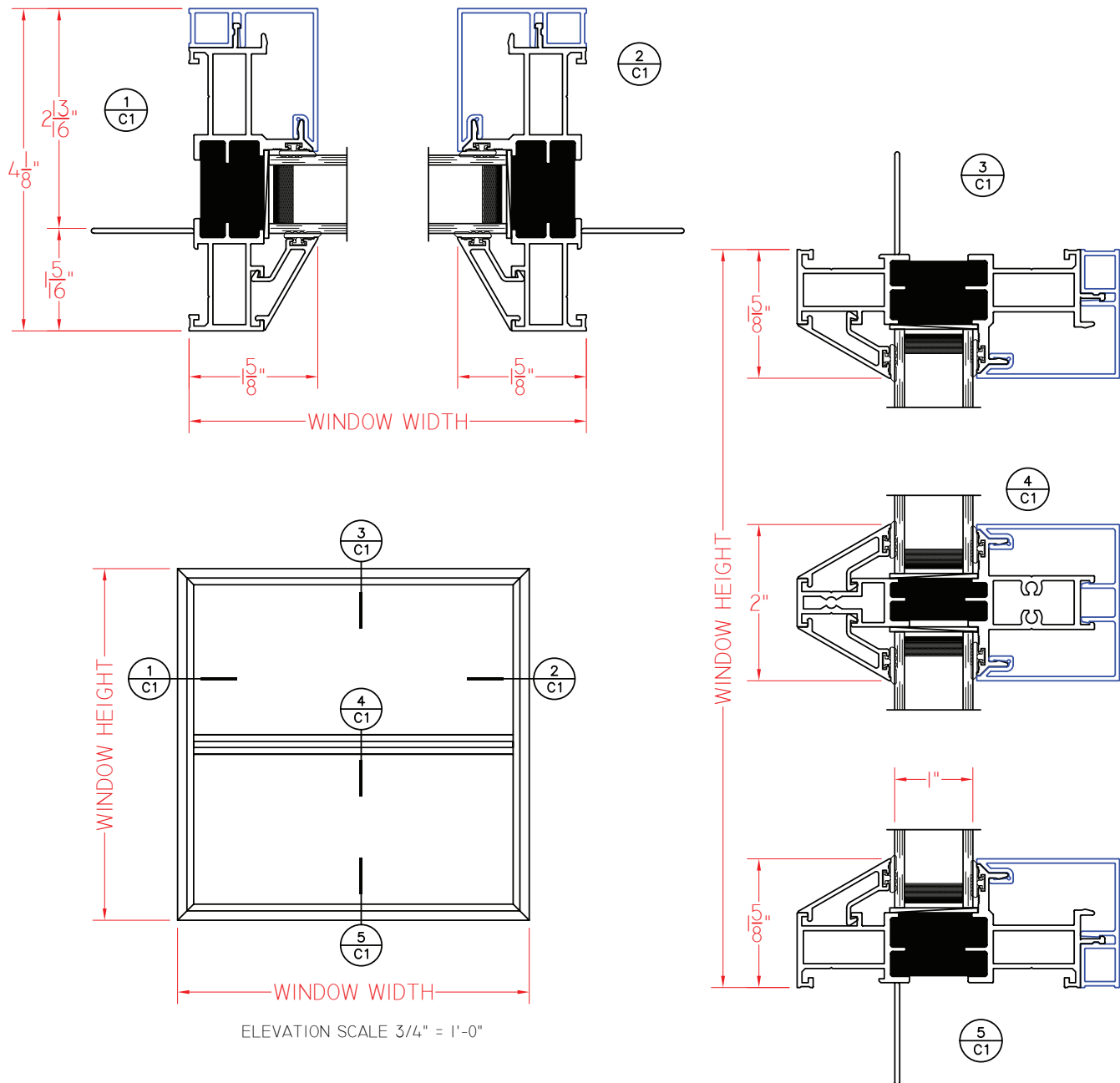


C605 Series 4 1/8" Frame Depth Fixed (Picture Window)

C605 Series Fixed/Fixed (Picture Window)

Shown with Nailing Fin and
Square Glazing Stops

This document contains confidential and proprietary information
intended for the private use of Quaker.
© 2019 Quaker Window Products Co., Inc. All rights reserved.
Quaker reserves the right to change any/all designs without notice.



Our products are tested to the standards of and
certified by some of the foremost organizations
in the fenestration industry.

