

E600 Series 3 1/4" Frame Depth Fixed (Picture Window)

E600 Series Fixed (Picture Window)

Features

- ◇ Commercial Framing System
 - 3 1/4" main frame
 - Sealable corner keys
 - Screw connections
 - 0.094" wall thickness of interior and exterior walls, 0.070" wall thickness elsewhere
- ◇ Enhanced Design
 - Azon pour and debridge thermal break is 1/2" wide in all main frame and vent rail extrusions
 - Clean squared edges
 - 2" narrow sitelines
- ◇ Glazing
 - 1" insulating glass

Benefits

- ◇ The capacity to match exterior colors for unique project facades
- ◇ The ability to facilitate large sizes for taller and wider window openings

Performance

- ◇ Structural & Thermal (test reports or thermal simulations available upon request)

Model	Fixed (Picture Window)
Test Size	60" x 99"
NAFS Rating	AW-100
Structural Load P.S.F.	150
Air Infiltration (cfm/ft ²)	<0.10
Water (No Penetration) P.S.F.	up to 15
U-Value (ranges based on multiple Low-E/Argon combinations)	0.18–0.51
SHGC (ranges based on multiple Low-E/Argon combinations)	0.11–0.67

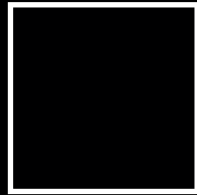
Due to periodic re-certification requirements, result shown may vary.

Options

- ◇ Available Configurations
 - Wire frame capabilities
- ◇ Muntin Choices
 - Internal or simulated divided lites available
- ◇ Nailing Fin
- ◇ Glazing
 - Multiple Low-E and argon glazing choices Capillary tubes
 - Optional glazing stop to accept 1 3/8" triple glazing (Energy TG)
 - Wide variety of glazing, tinting and thickness options
- ◇ Panning & Trim Choices
 - Wide variety of panning, receptor and trim available
- ◇ Mulling
 - Wide variety of structural mulls

Our products are tested to the standards of and certified by some of the foremost organizations in the fenestration industry.

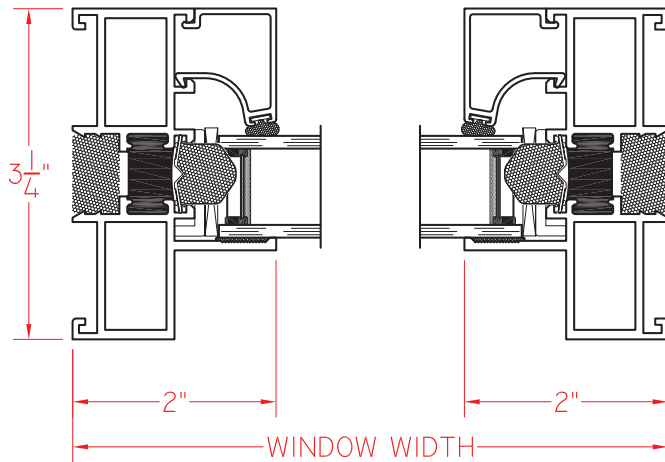




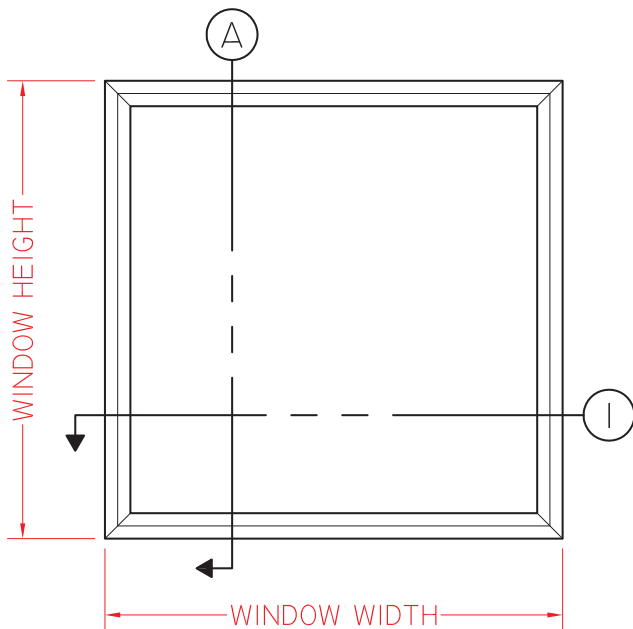
E600 Series 3 1/4" Frame Depth Fixed (Picture Window)

E600 Series Fixed (Picture Window)

This document contains confidential and proprietary information intended for the private use of Quaker.
© 2016 Quaker Window Products Co., Inc. All rights reserved.
Quaker reserves the right to change any/all designs without notice.

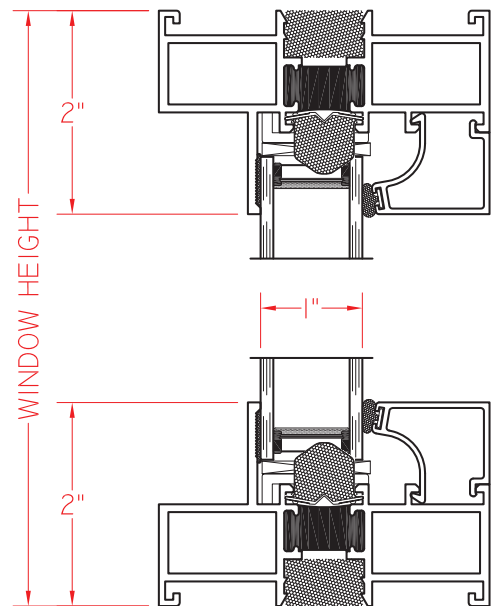


① HORIZONTAL
CROSS SECTION



ELEVATION SCALE 3/4" = 1'-0"

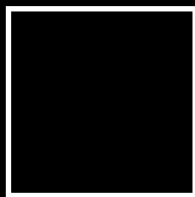
Ⓐ VERTICAL
CROSS SECTION



SCALE 1:2

Our products are tested to the standards of and certified by some of the foremost organizations in the fenestration industry.

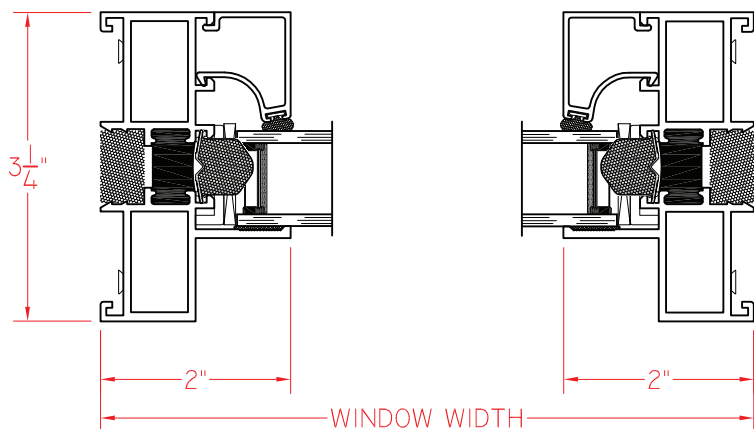




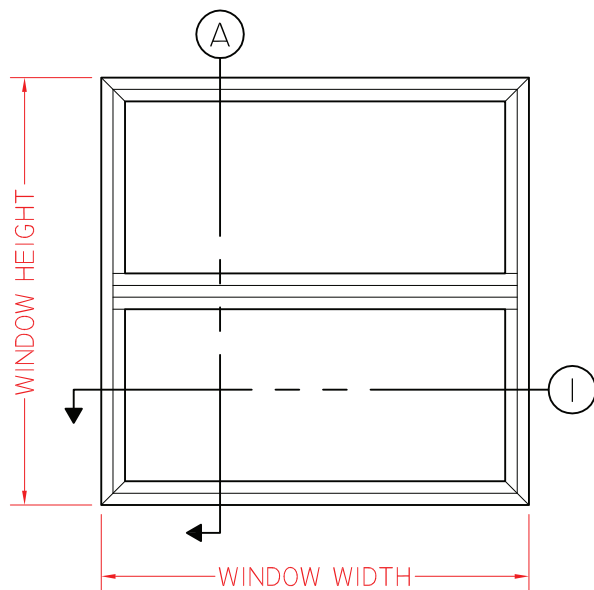
E600 Series 3 1/4" Frame Depth Fixed (Picture Window)

E600 Series Fixed/Fixed (Picture Window)

This document contains confidential and proprietary information intended for the private use of Quaker.
© 2016 Quaker Window Products Co., Inc. All rights reserved.
Quaker reserves the right to change any/all designs without notice.

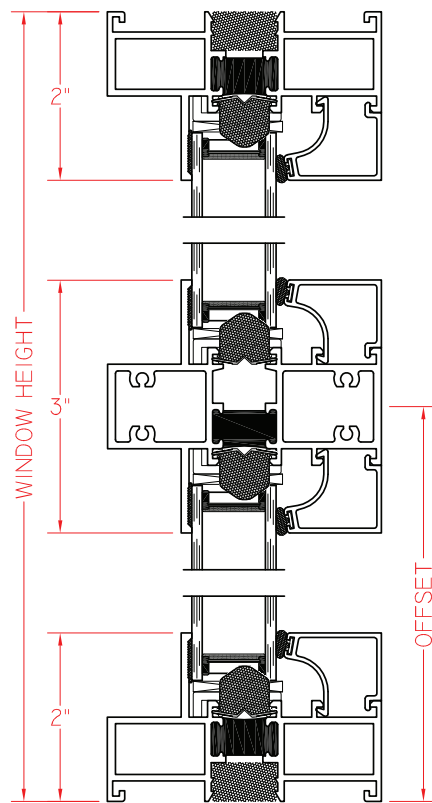


① HORIZONTAL
CROSS SECTION



ELEVATION SCALE 3/4" = 1'-0"

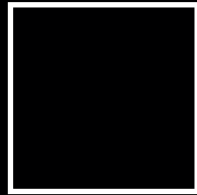
Ⓐ VERTICAL
CROSS SECTION



SCALE 1:2

Our products are tested to the standards of and certified by some of the foremost organizations in the fenestration industry.

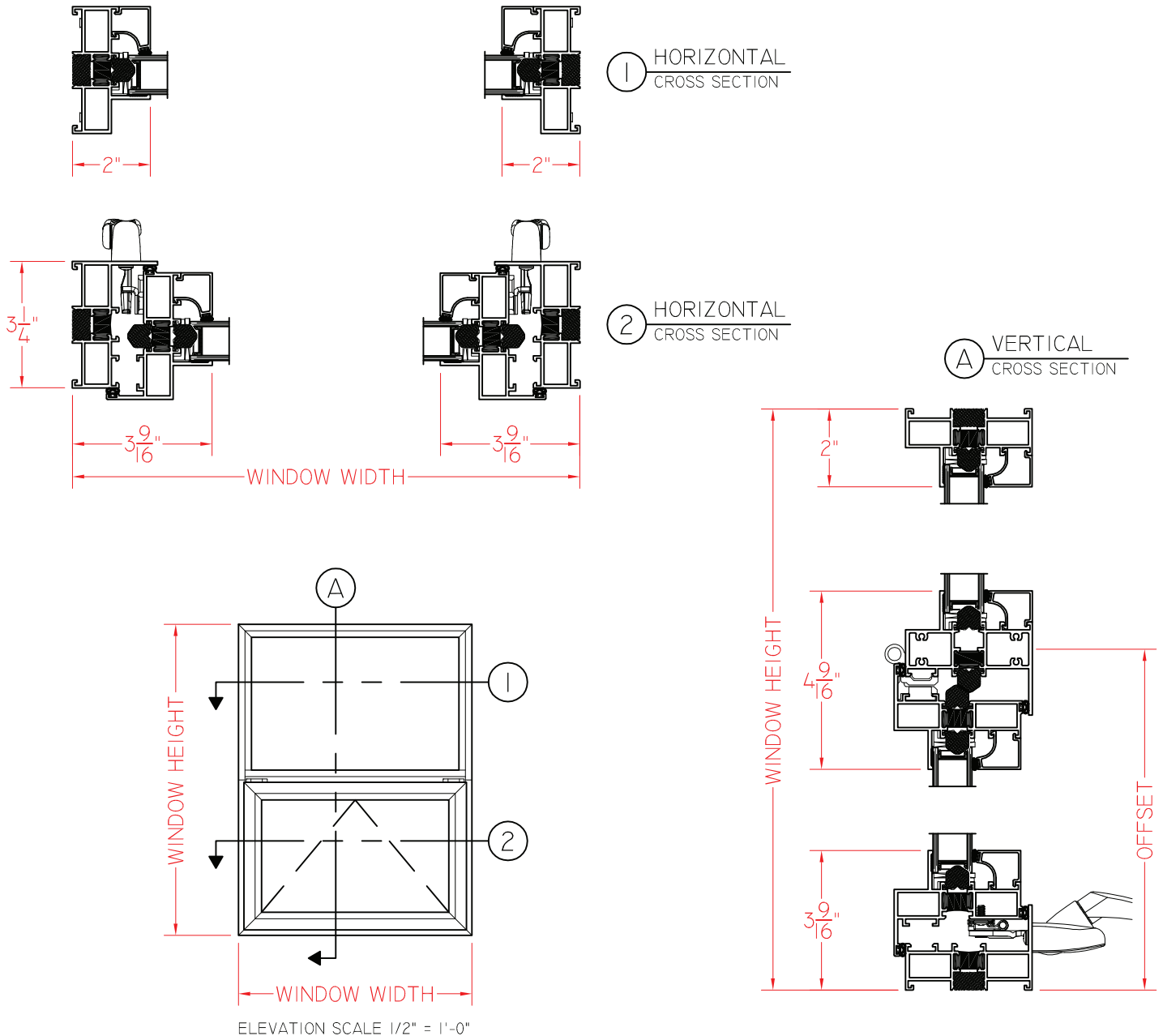




E600 Series 3 1/4" Frame Depth Fixed (Picture Window)

E600 Series Fixed/Fixed (Picture Window)

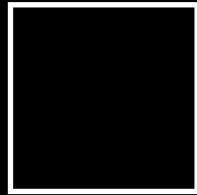
This document contains confidential and proprietary information intended for the private use of Quaker.
© 2016 Quaker Window Products Co., Inc. All rights reserved.
Quaker reserves the right to change any/all designs without notice.



SCALE 1:4

Our products are tested to the standards of and certified by some of the foremost organizations in the fenestration industry.

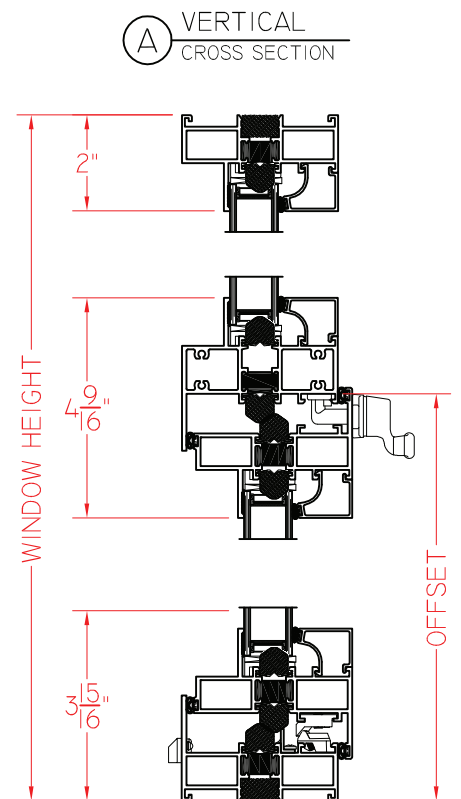
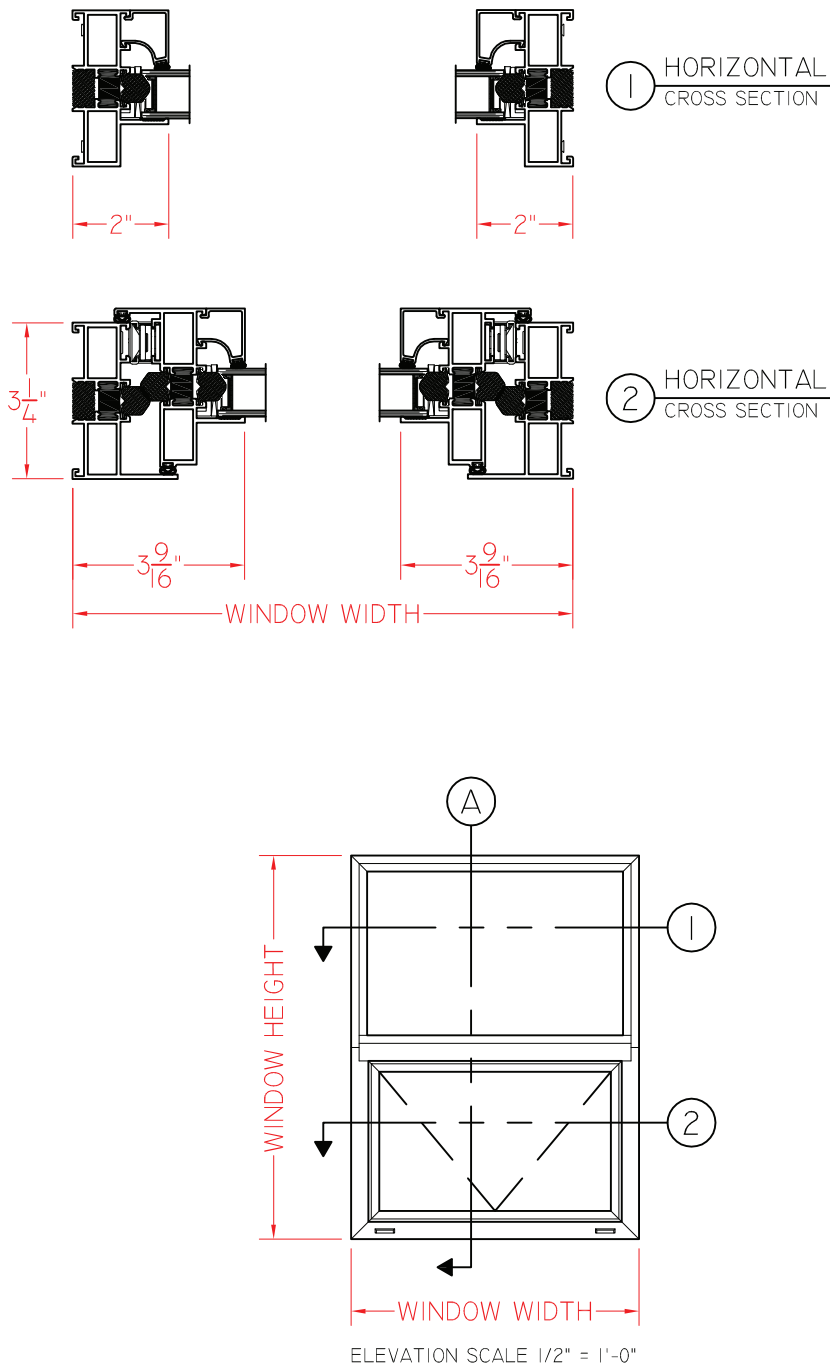




E600 Series 3 1/4" Frame Depth Fixed (Picture Window)

E600 Series Fixed/Fixed (Picture Window)

This document contains confidential and proprietary information intended for the private use of Quaker.
© 2016 Quaker Window Products Co., Inc. All rights reserved.
Quaker reserves the right to change any/all designs without notice.



SCALE 1:4

Our products are tested to the standards of and certified by some of the foremost organizations in the fenestration industry.

