

M600 Series 3 1/4" Frame Depth Fixed (Picture Window)

M600 Series Fixed (Picture Window)

Features

- ◇ Commercial Framing System
 - 3 1/4" main frame
 - Sealable corner keys
 - Crimp/Screw connections
 - 0.094" wall thickness of interior and exterior walls, 0.070" wall thickness elsewhere
- ◇ Enhanced Design
 - Azo-braided channel receives Azon pour and debridge thermal break which is 1/2" wide in all main frame and vent rail extrusions
 - Clean squared edges
 - 1 7/8" narrow sitelines
- ◇ Glazing
 - 1" insulating glass

Benefits

- ◇ The capacity to match exterior colors for unique project facades
- ◇ The ability to facilitate large sizes for taller and wider window openings
- ◇ Modern appearance merged with superior structural integrity

Performance

- ◇ Structural & Thermal (test reports or thermal simulations available upon request)

Model	Fixed (Picture Window)
Test Sizes	72" x 120"
NAFS Rating	AW-70
Structural Load P.S.F.	105
Air Infiltration (cfm/ft ²)	<0.10
Water (No Penetration) P.S.F.	12
CR (Condensation Resistance)	31-60
U-Value (ranges based on multiple Low-E/Argon combinations)	0.18-0.50
SHGC (ranges based on multiple Low-E/Argon combinations)	0.13-0.68
STC/OITC	30-39/27-41

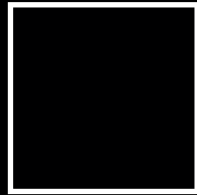
Due to periodic re-certification requirements, result shown may vary.

Options

- ◇ Available Configurations
 - Fixed
 - Continuous Frame capabilities
- ◇ Muntin Choices
 - Internal or simulated divided lites available
- ◇ Nailing Fin
- ◇ Glazing
 - Multiple Low-E and argon glazing choices
 - 1 3/8" Triple glazing (Energy TG)
 - Capillary tubes
 - Wide variety of glazing, tinting and thickness options
- ◇ Panning & Trim Choices
 - Wide variety of panning, receptor and trim available
 - Jamb filler
- ◇ Mulling
 - Wide variety of structural mulls

Our products are tested to the standards of and certified by some of the foremost organizations in the fenestration industry.



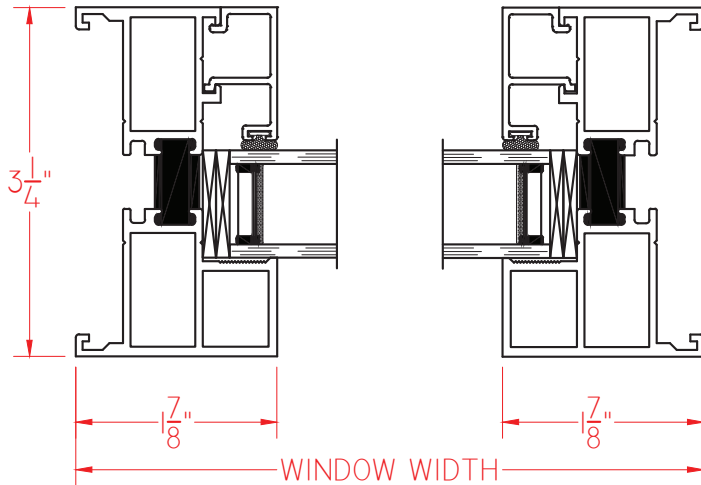


M600 Series 3 1/4" Frame Depth Fixed (Picture Window)

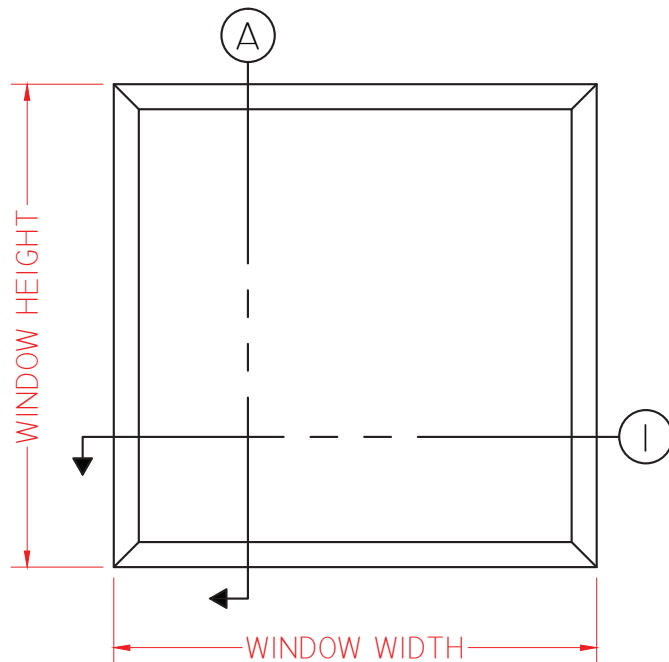
M600 Series Fixed (Picture Window)

Shown without
Nailing Fin

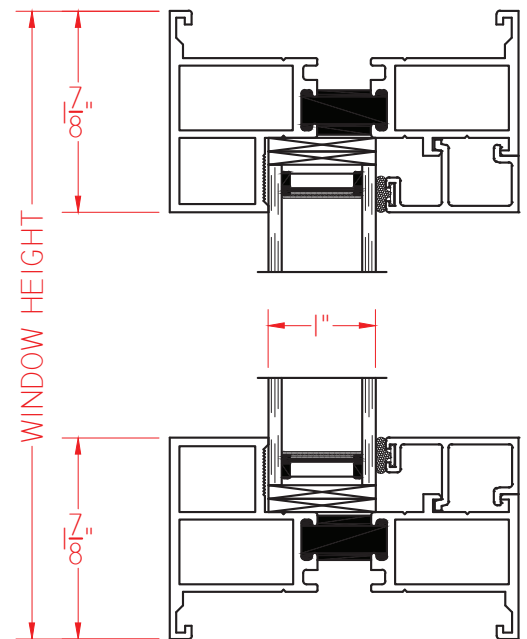
This document contains confidential and proprietary information intended for the private use of Quaker.
© 2016 Quaker Window Products Co., Inc. All rights reserved.
Quaker reserves the right to change any/all designs without notice.



① HORIZONTAL
CROSS SECTION



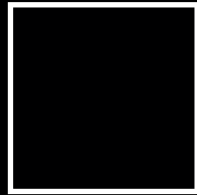
Ⓐ VERTICAL
CROSS SECTION



ELEVATION SCALE 3/4" = 1'-0"

Our products are tested to the standards of and certified by some of the foremost organizations in the fenestration industry.



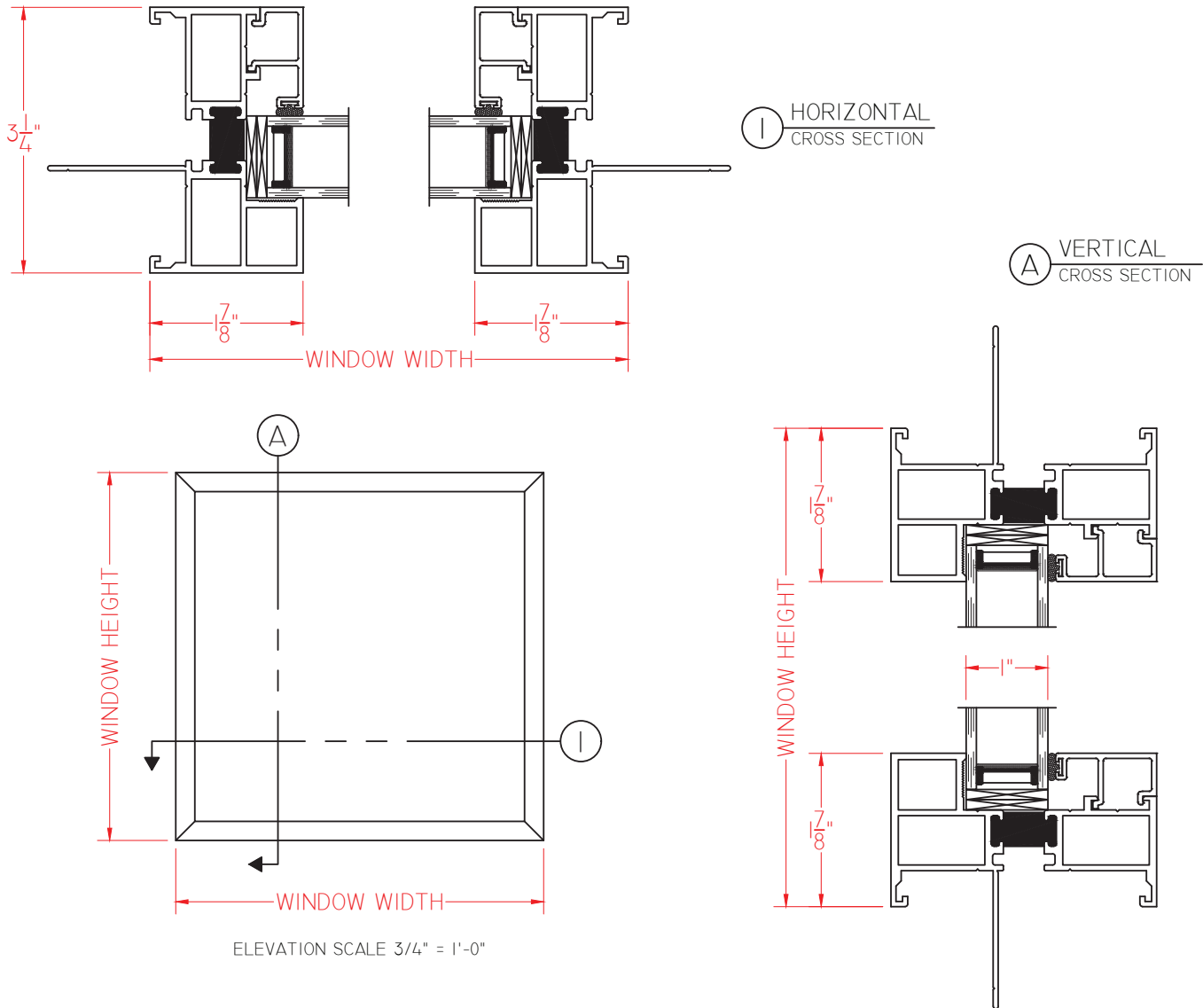


M600 Series 3 1/4" Frame Depth Fixed (Picture Window)

M600 Series Fixed (Picture Window)

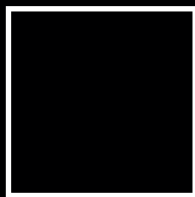
Shown with
Nailing Fin

This document contains confidential and proprietary information intended for the private use of Quaker.
© 2016 Quaker Window Products Co., Inc. All rights reserved.
Quaker reserves the right to change any/all designs without notice.



Our products are tested to the standards of and certified by some of the foremost organizations in the fenestration industry.





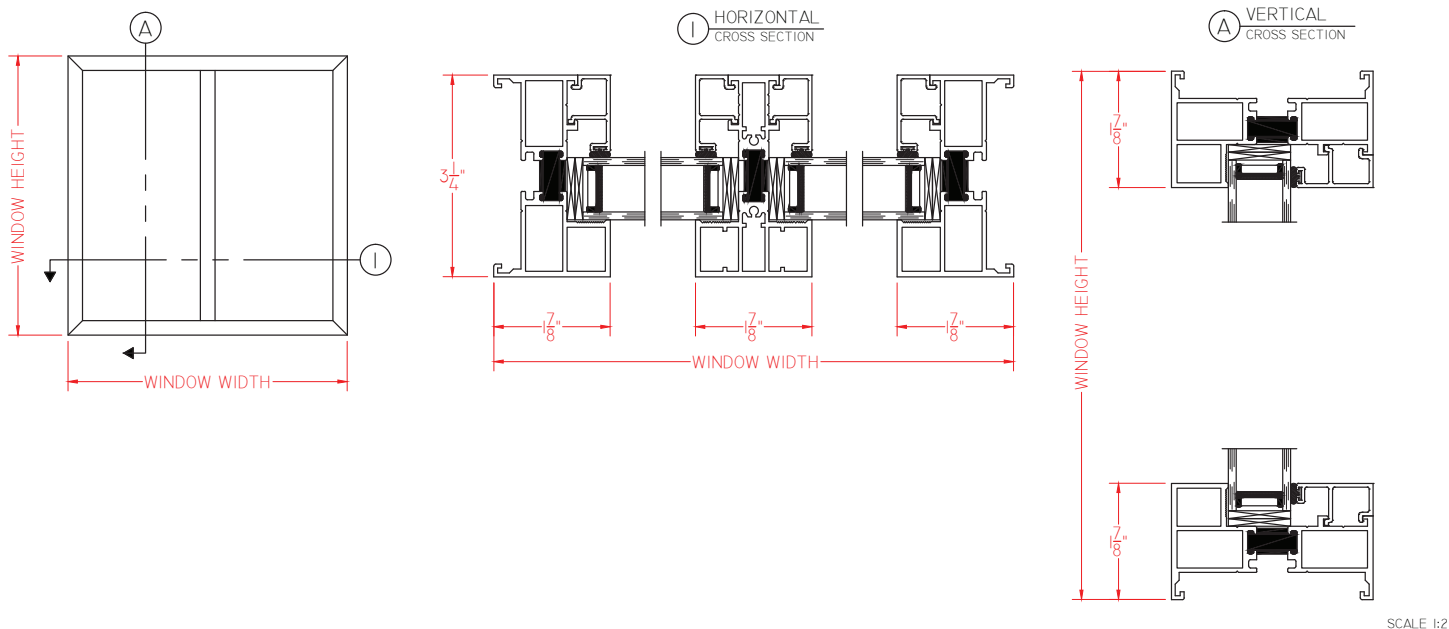
M600 Series 3 1/4" Frame Depth Fixed (Picture Window)

M600 Series Fixed/Fixed (Picture Window)

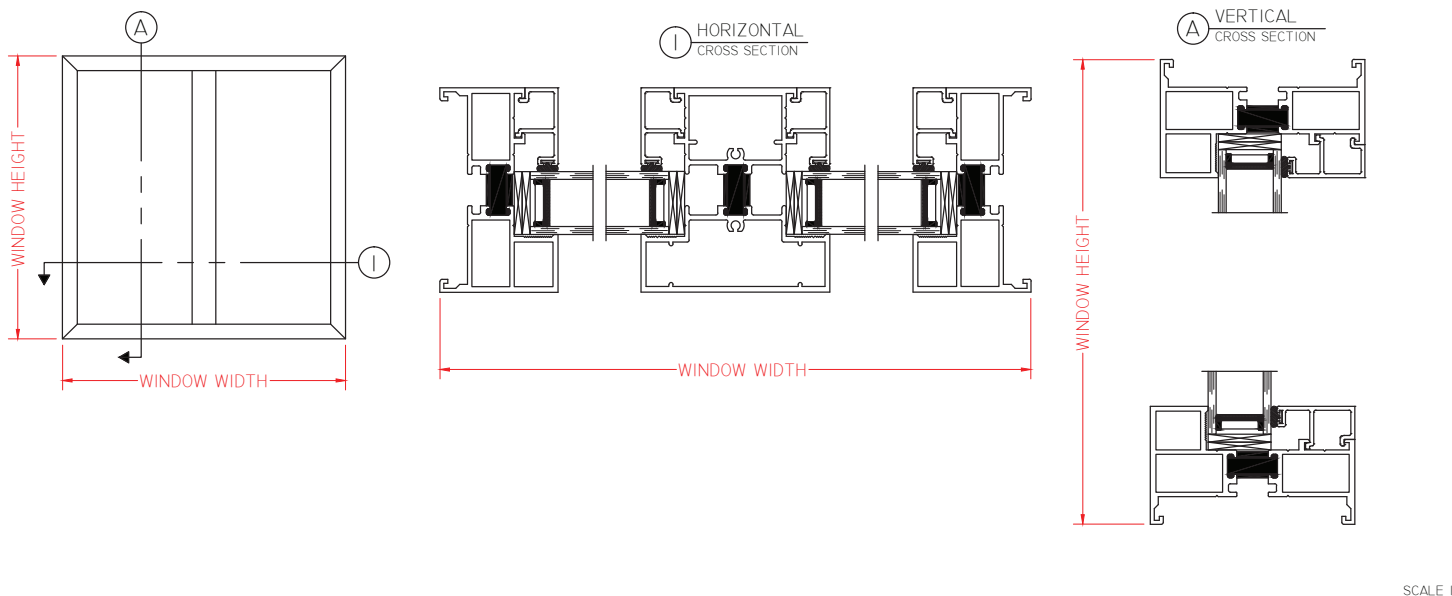
Shown with Double Jamb and
1 7/8" vertical center sightline (top
graphics) or 3" vertical center
sightline (bottom graphics)

This document contains confidential and proprietary information
intended for the private use of Quaker.
© 2016 Quaker Window Products Co., Inc. All rights reserved.
Quaker reserves the right to change any/all designs without notice.

Double Jamb with 1 7/8" Sightline

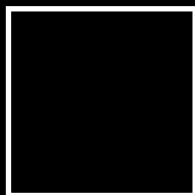


Double Jamb with Wide 3" Sightline



Our products are tested to the standards of and
certified by some of the foremost organizations
in the fenestration industry.

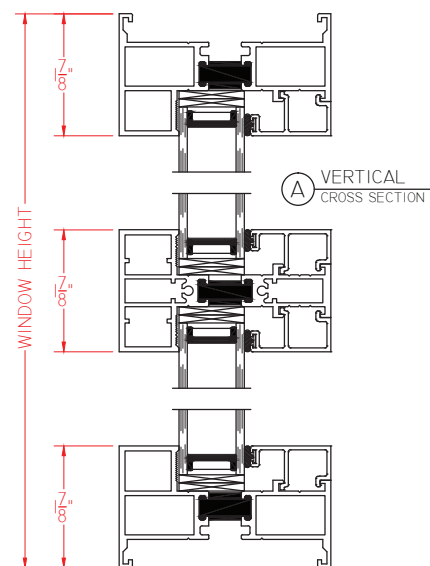
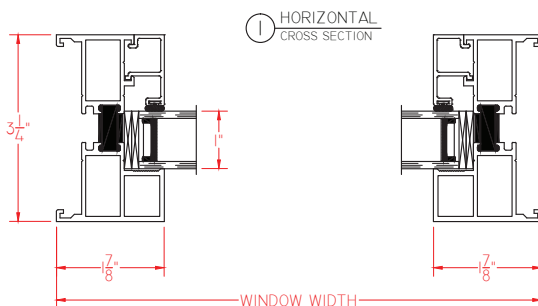




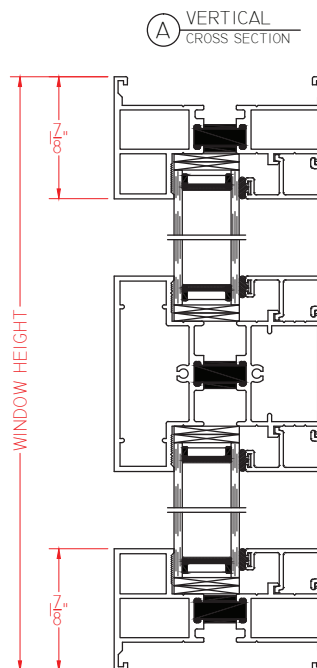
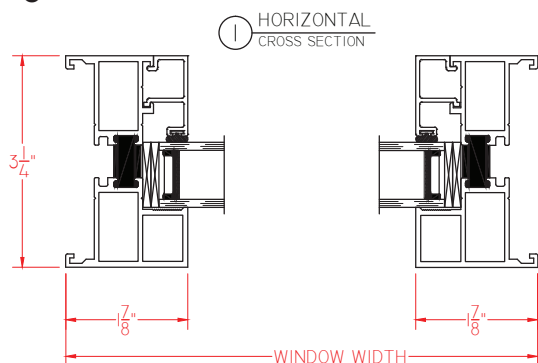
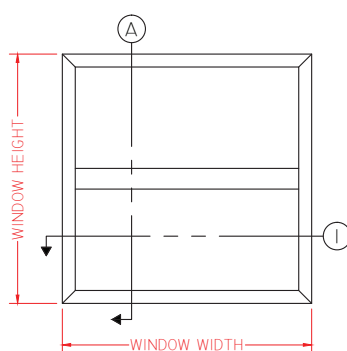
M600 Series Fixed/Fixed (Picture Window)

Meeting Rail with Narrow 1 7/8" Sightline

A diagram of a window frame. The frame is rectangular with a double-pane design. The top pane is labeled 'A' in a circle. The bottom pane is labeled 'I' in a circle. A horizontal dashed line separates the two panes. Red dimension lines indicate the 'WINDOW HEIGHT' on the left and 'WINDOW WIDTH' at the bottom. Arrows point from the labels 'A' and 'I' to their respective panes.



Double Jamb with Wide 3" Sightline



800-347-0438