

## V250 Series 3 1/4" Overall Frame Depth Fixed (Picture Window)

### V250 Series Fixed (Picture Window)

#### Features

- ♦ **Commercial Framing System**
  - 3 1/4" main frame
  - 0.060" wall thickness of frame, 0.070" wall thickness of sash
- ♦ **Enhanced Design**
  - Mitered and welded corners
- ♦ **Glazing**
  - 3/4" insulating glass
- ♦ **Colors**
  - White or Sandstone vinyl (interior/exterior)

#### Benefits

- ♦ The capacity to match exterior colors for unique project facades
- ♦ The ability to facilitate large sizes for taller and wider window openings

#### Performance

- ♦ Structural & Thermal (test reports or thermal simulations available upon request)

Model	Fixed (Picture Window)	Casement Fixed (Picture Window)
NAFS Rating	LC-35	
Test Size	56" x 56"	
Structural Load P.S.F.	75	
Air Infiltration (cfm/ft <sup>2</sup> )	<0.30	
Water (No Penetration) P.S.F.	7.5	
U-Value (ranges based on multiple Low-E/ Argon combinations)	0.25-0.52	0.20-0.32
SHGC (ranges based on multiple Low-E/ Argon combinations)	0.12-0.65	0.13-0.50

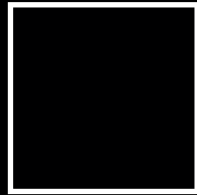
Due to periodic re-certification requirements, result shown may vary.

#### Options

- ♦ **Available Configurations**
  - Picture window
  - Geometric shapes
- ♦ **Muntin Choices**
  - Internal or simulated divided lites available
- ♦ **Nailing Fin**
- ♦ **Glazing**
  - Multiple Low-E and argon glazing choices
  - Triple glazing (Energy TG)
  - Capillary tubes
  - Wide variety of glazing, tinting and thickness options
- ♦ **Panning & Trim Choices**
  - Wide variety of panning, receptor and trim available
- ♦ **Mulling**
  - Wide variety of structural mulls
- ♦ **Colors**
  - High-performance Textured Black laminate (interior/exterior)
  - High-performance Textured Black, Textured Dark Bronze, Textured Dark Grey, or Textured Resembles Clear Anodized laminate (exterior only with White vinyl interior)
  - Twelve painted exterior colors (with White or Sandstone vinyl interior)
  - Unlimited custom painted exterior colors

Our products are tested to the standards of and certified by some of the foremost organizations in the fenestration industry.

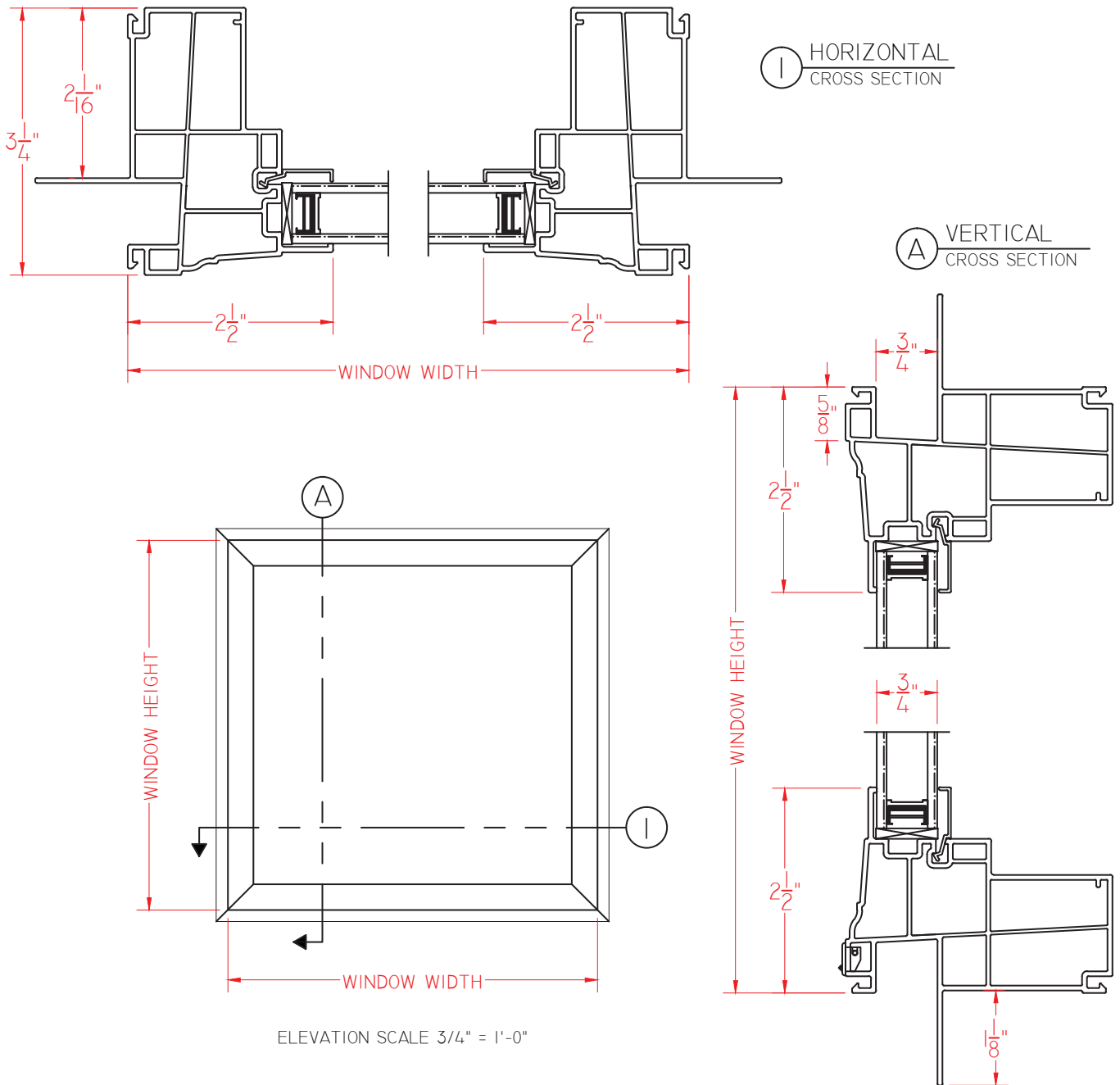




## V250 Series 3 1/4" Overall Frame Depth Fixed (Picture Window)

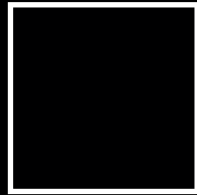
### V250 Series Fixed (Picture Window)

This document contains confidential and proprietary information intended for the private use of Quaker.  
© 2016 Quaker Window Products Co., Inc. All rights reserved.  
Quaker reserves the right to change any/all designs without notice.



Our products are tested to the standards of and certified by some of the foremost organizations in the fenestration industry.

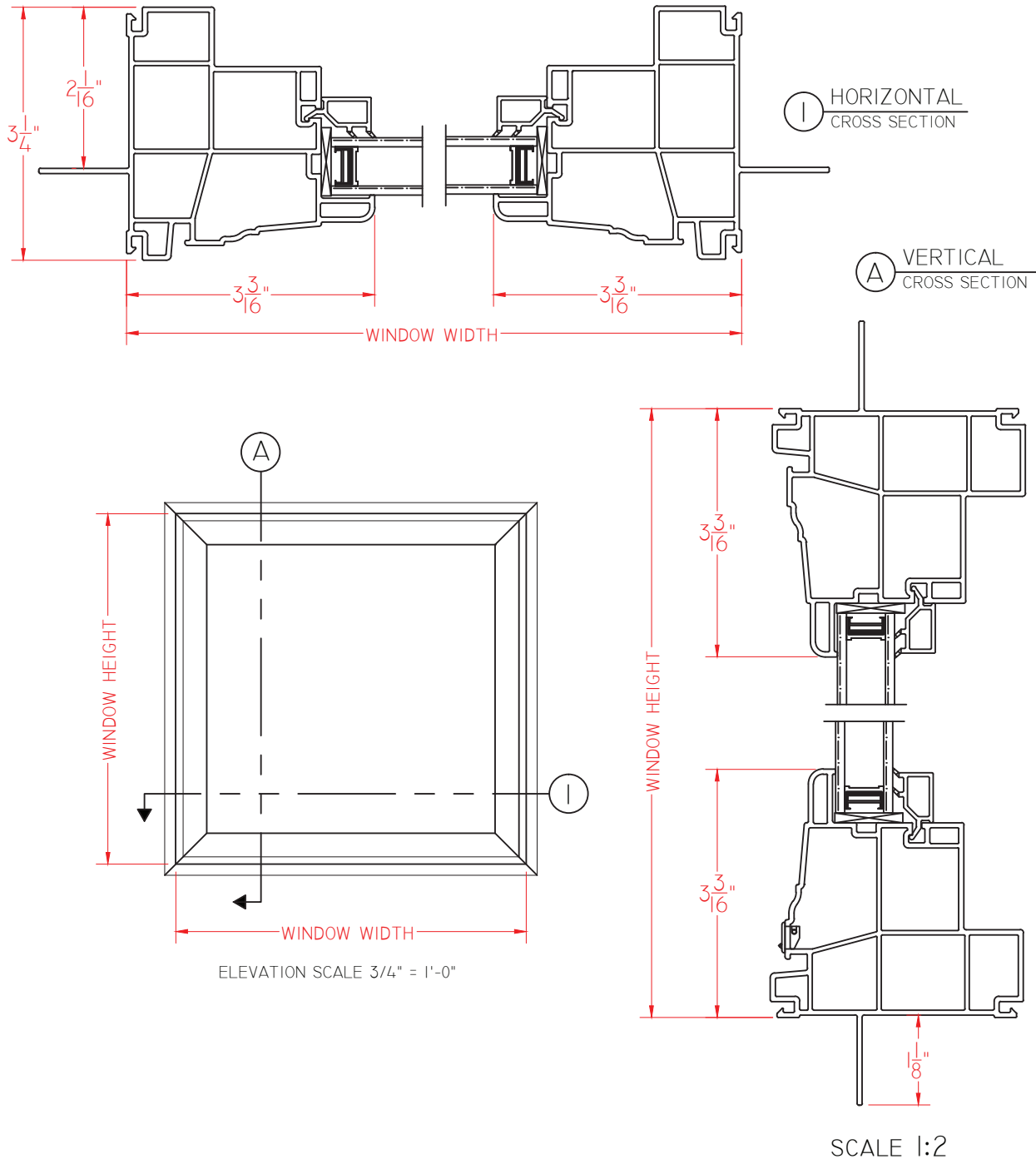




## V250 Series 3 1/4" Overall Frame Depth Fixed (Picture Window)

### V250 Series Casement Fixed (Picture Window)

This document contains confidential and proprietary information intended for the private use of Quaker.  
© 2016 Quaker Window Products Co., Inc. All rights reserved.  
Quaker reserves the right to change any/all designs without notice.



Our products are tested to the standards of and certified by some of the foremost organizations in the fenestration industry.

