

V300 Series 3 1/4" Frame Depth Fixed (Picture Window) to match V300 Casement and V300 Project-Out

V300 Series Fixed (Picture Window)

To match V300 Casement
and V300 Project-Out

Features

- ♦ **Commercial Framing System**
 - 3 1/4" main frame
- ♦ **Enhanced Design**
 - Mitered and welded corners
 - 2 1/8" sightlines
- ♦ **Glazing**
 - 1" insulating glass
- ♦ **Integral Nailing Fin**
- ♦ **Colors**
 - White or Sandstone vinyl (interior/exterior)

Benefits

- ♦ Perfect alternative product for commercial projects 8-stories and less. (up to 11 stories using receptor and subsill system)

Performance

- ♦ Structural & Thermal (test reports or thermal simulations available upon request)

Model	Fixed (Picture Window)	Fixed (Wide Rail Picture Window)
Test Size	72" x 84"	78" x 78"
NAFS Rating	CW-50	CW-50
Structural Load P.S.F.	75	75.19
Air Infiltration (cfm/ft ²)	<0.10	<0.10
Water (No Penetration) P.S.F.	7.5	7.5
U-Value (ranges based on multiple Low-E/Argon combinations)	0.15–0.43	0.10–0.59
SHGC (ranges based on multiple Low-E/Argon combinations)	0.10–0.59	0.09–0.60

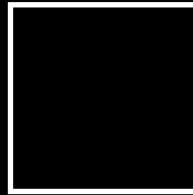
Due to periodic re-certification requirements, result shown may vary.

Options

- ♦ **Available Configurations**
 - Fixed
 - Fixed Wide Rail with 3 3/8" sightlines
- ♦ **Muntin Choices**
 - Internal or simulated divided lites available
- ♦ **Glazing**
 - Multiple Low-E and argon glazing choices
 - Triple glazing (Energy TG)
 - Capillary tubes
 - Wide variety of glazing, tinting and thickness options
- ♦ **Panning & Trim Choices**
 - Wide variety of panning, receptor and trim available
- ♦ **Mulling**
 - Wide variety of structural mulls
- ♦ **Color**
 - High-performance Textured Black laminate (interior/exterior)
 - High-performance Textured Black, Textured Dark Bronze, Textured Dark Grey or Textured Resembles Clear Anodized laminate (exterior only with White vinyl interior)
 - Twelve painted exterior colors (with White or Sandstone vinyl interior)
 - Unlimited custom painted exterior colors

Our products are tested to the standards of and certified by some of the foremost organizations in the fenestration industry.



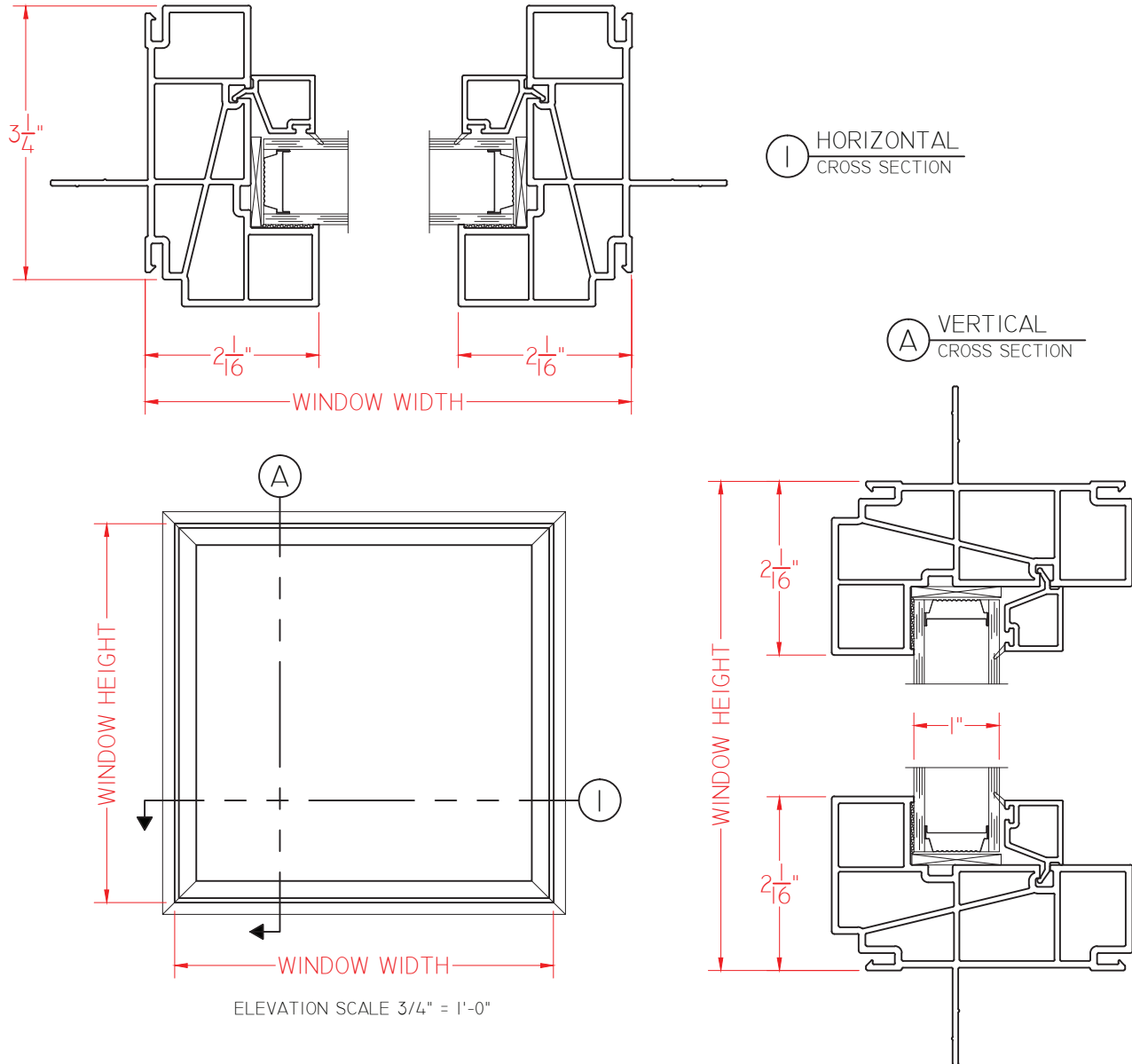


V300 Series 3 1/4" Frame Depth Fixed (Picture Window) to match V300 Casement and V300 Project-Out

V300 Series Fixed (Picture Window)

To match V300 Casement
and V300 Project-Out

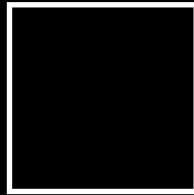
This document contains confidential and proprietary information intended for the private use of Quaker.
© 2016 Quaker Window Products Co., Inc. All rights reserved.
Quaker reserves the right to change any/all designs without notice.



SCALE 1:2

Our products are tested to the standards of and certified by some of the foremost organizations in the fenestration industry.



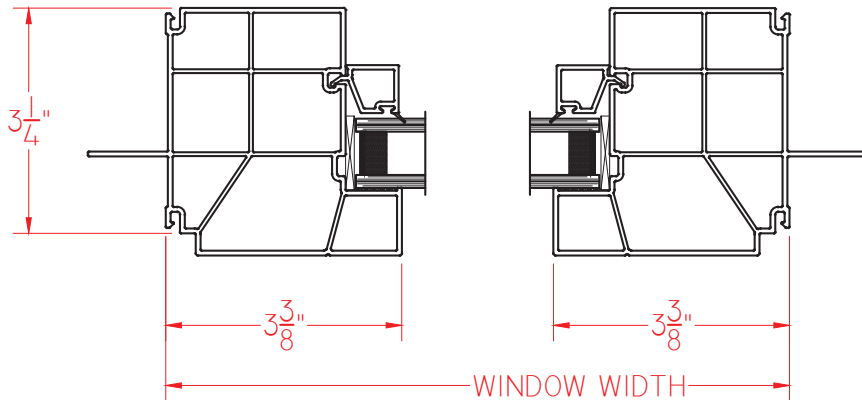


V300 Series 3 1/4" Frame Depth Fixed (Picture Window) to match V300 Casement and V300 Project-Out

V300 Series Fixed Wide Rail (Picture Window)

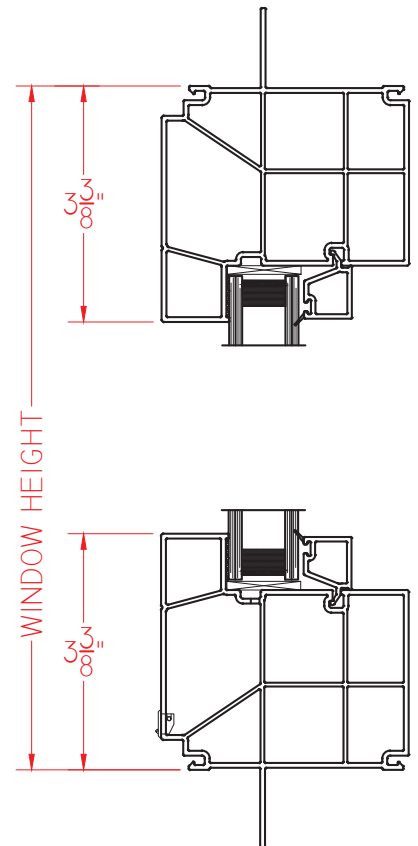
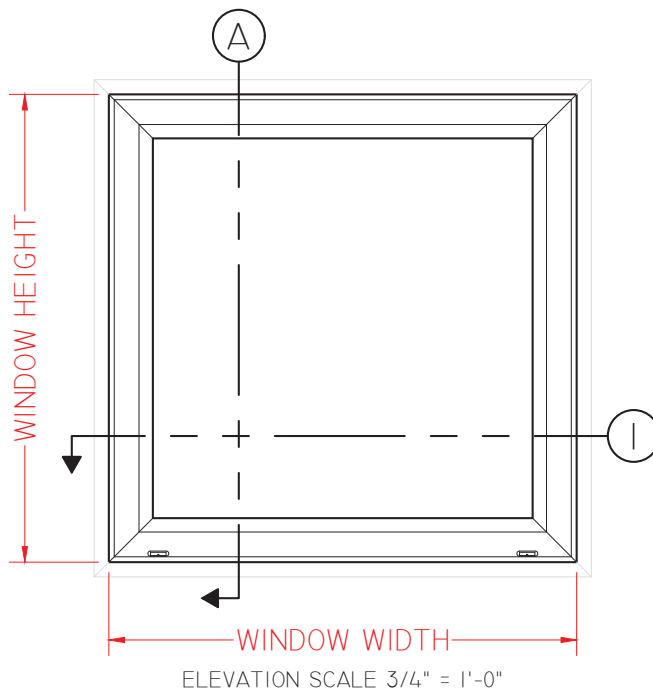
To match V300 Casement
and V300 Project-Out

This document contains confidential and proprietary information intended for the private use of Quaker.
© 2016 Quaker Window Products Co., Inc. All rights reserved.
Quaker reserves the right to change any/all designs without notice.



① HORIZONTAL
CROSS SECTION

Ⓐ VERTICAL
CROSS SECTION



Our products are tested to the standards of and certified by some of the foremost organizations in the fenestration industry.



SCALE 1:3