



## T600 Series 3 1/4" Frame Depth Project-Out

### T600 Series Project-Out

#### Features

- ◇ Material
  - Extruded Aluminum
- ◇ Commercial Framing System
  - 3 1/4" main frame
  - 0.094" wall thickness of interior and exterior walls
  - 0.078" wall thickness elsewhere
- ◇ Thermally Enhanced Design
  - Azon pour and debridge thermal break is 1/2" wide in all main frame and vent rail extrusions
  - Assembled with heavy duty Monticelli cast aluminum corner keys
  - Mitered and pressure sealed internally with injected silicone through corner key passages.
  - Wrap-around marine glazing
- ◇ Glazing
  - 1" insulating glass
- ◇ Hardware
  - 4-Bar hinges on both Crank-Out/Roto and Push-Out models
  - Heavy-commercial Truth Contour™ locking system (Crank-Out/Roto model only)
  - Heavy-commercial Truth Contour™ multipoint lock with push handle (no crank hardware)
  - Low profile cam handle (Push-Out model only)
  - Pole Operated handle (Push-Out model only)
  - Custodial lock with removable handle (Push-Out model only)
- ◇ Screen
  - Wicket screet (Push-Out model only)
  - Extruded aluminum screen frame with BetterVue™ mesh (Crank-Out/Roto model only)
- ◇ Meets ADA Requirements (ADA Handle Required, Crank-Out/Roto model only)

#### Performance

- ◇ Structural & Thermal (test reports or thermal simulations available upon request)

Model	T600 Project-Out
Test Size	60" x 36"
NAFS Rating	AW-70
Structural Load P.S.F.	105
Air Infiltration (cfm/ft <sup>2</sup> )	<0.10
Water (No Penetration) P.S.F.	12
U-Value (ranges based on multiple Low-E/Argon combinations)	0.41-0.58
SHGC (ranges based on multiple Low-E/Argon combinations)	0.12-0.49

Due to periodic re-certification requirements, result shown may vary.

#### Options

- ◇ Available Configurations
  - Project-out
  - Push-Out or Crank-Out
  - Continuous frame capabilities
- ◇ Muntin Choices
  - Internal or simulated divided lites available
- ◇ Limited travel hardware
- ◇ Screen
  - Extruded aluminum screen frame with aluminum wire mesh
  - Extruded aluminum screen frame with sunscreen mesh
  - Extruded aluminum screen frame with stainless steel 0.009" thickness mesh
- ◇ Glazing
  - Multiple Low-E and argon glazing choices
  - Capillary tubes
  - Wide variety of glazing, tinting and thickness options
- ◇ Panning & Trim Choices
  - Wide variety of panning, receptor and trim available
- ◇ Mulling
  - Wide variety of structural mulls

#### Benefits

- ◇ The capacity to match exterior colors for unique project facades
- ◇ The ability to facilitate large sizes for taller and wider window openings

Operating Force: 12 lbf (maintain motion), 17 lbf (latches)  
4 lbf (ADA Handle maintain motion), 2 lbf (ADA Handle latches)

Our products are tested to the standards of and certified by some of the foremost organizations in the fenestration industry.

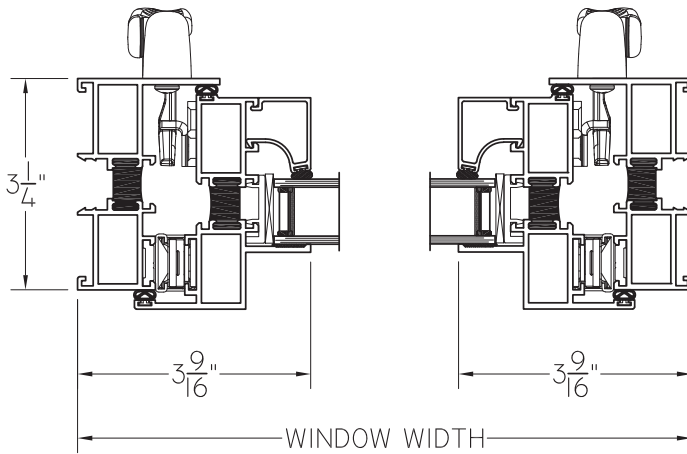




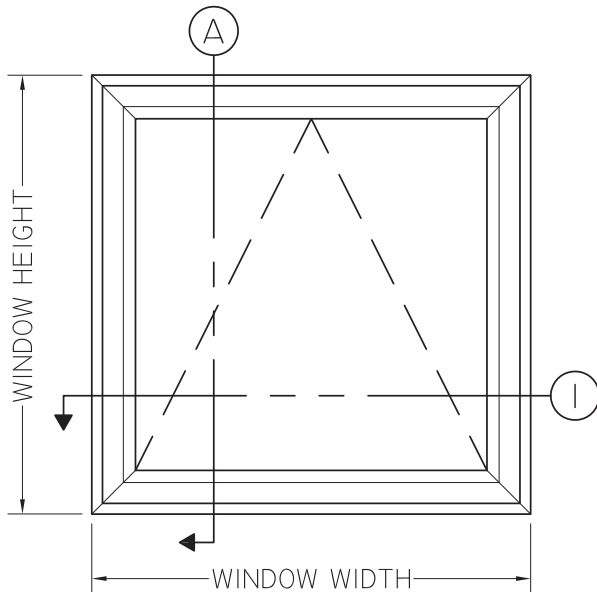
## T600 Series Project-Out (Crank-Out)

With Roto  
Hardware

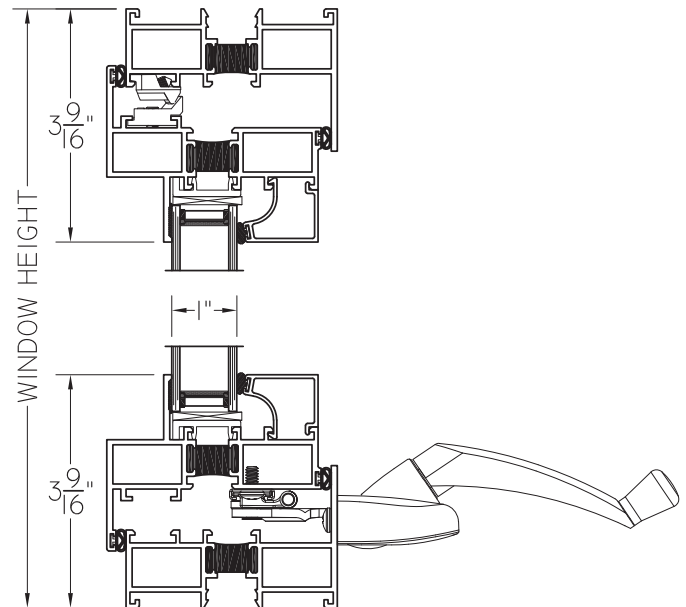
This document contains confidential and proprietary information intended for the private use of Quaker.  
© 2016 Quaker Window Products Co., Inc.. All rights reserved.  
Quaker reserves the right to change any/all designs without notice.



① HORIZONTAL  
CROSS SECTION



② VERTICAL  
CROSS SECTION



SCALE 1:3

Our products are tested to the standards of and certified by some of the foremost organizations in the fenestration industry.



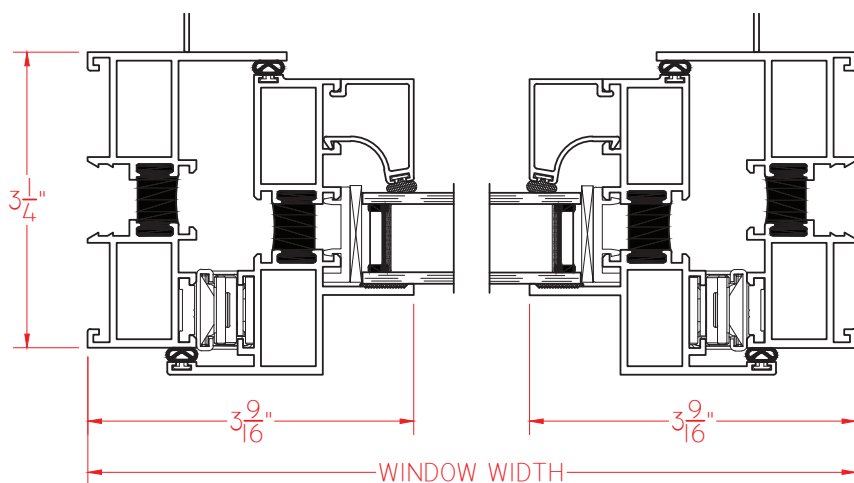


# T600 Series 3 1/4" Frame Depth Project-Out

## T600 Series Project-Out (Push-Out)

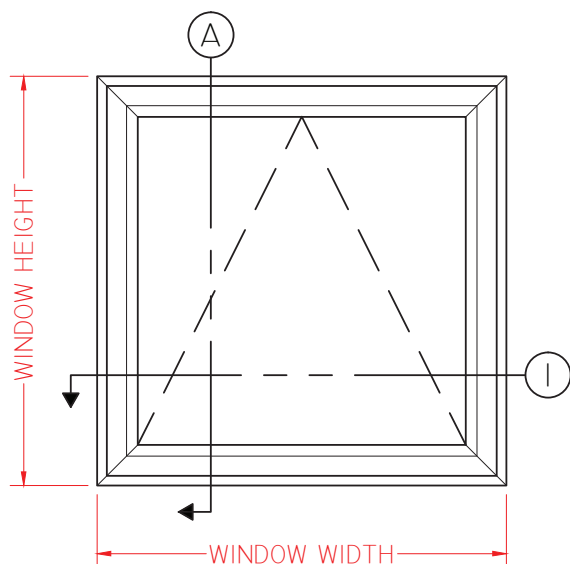
With Push-Out  
Hardware

This document contains confidential and proprietary information intended for the private use of Quaker.  
© 2016 Quaker Window Products Co., Inc.. All rights reserved.  
Quaker reserves the right to change any/all designs without notice.

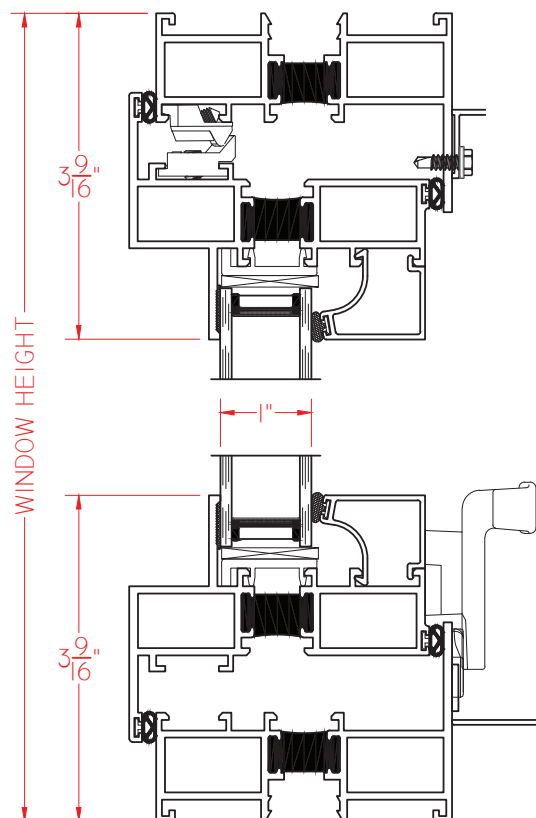


① HORIZONTAL  
CROSS SECTION

Ⓐ VERTICAL  
CROSS SECTION



ELEVATION SCALE 3/4" = 1'-0"



SCALE 1:2

Our products are tested to the standards of and certified by some of the foremost organizations in the fenestration industry.

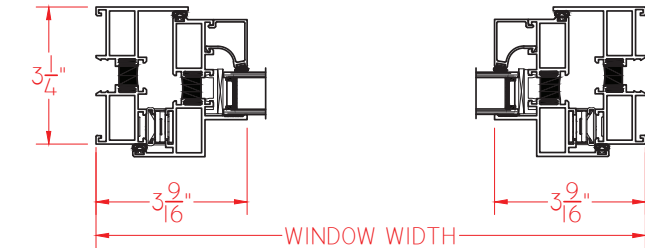




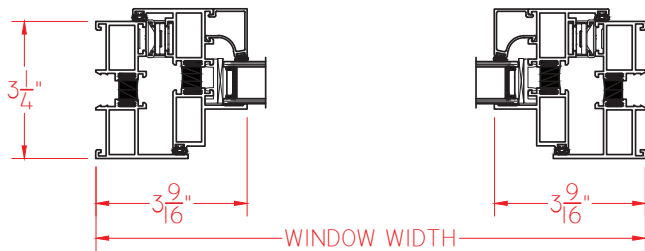
## E600 Series Project-Out/Project-In (Push-Out)

With Push-Out Hardware

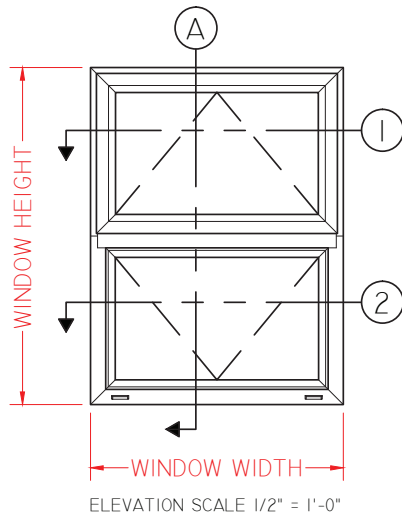
This document contains confidential and proprietary information intended for the private use of Quaker.  
© 2016 Quaker Window Products Co., Inc.. All rights reserved.  
Quaker reserves the right to change any/all designs without notice.



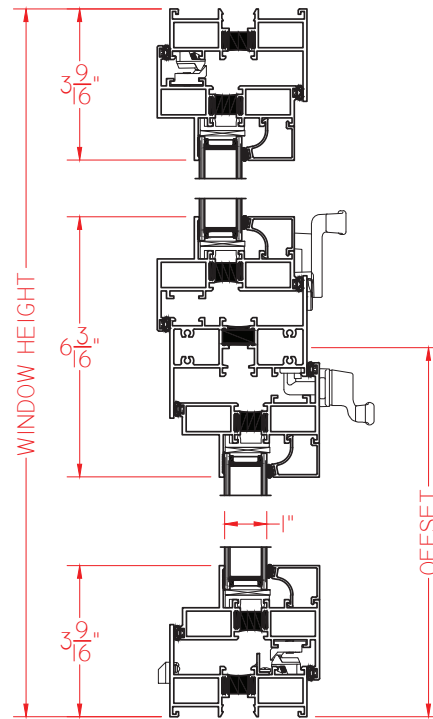
① HORIZONTAL CROSS SECTION



② HORIZONTAL CROSS SECTION



Ⓐ VERTICAL CROSS SECTION



SCALE 1:4

Our products are tested to the standards of and certified by some of the foremost organizations in the fenestration industry.

