



E600 Series 3 1/4" Frame Depth Project-In (Hopper)

E600 Series Project-In

Features

- ◇ Material
 - Extruded Aluminum
- ◇ Commercial Framing System
 - 3 1/4" main frame
 - 0.094" wall thickness of interior and exterior walls, 0.078" wall thickness elsewhere
- ◇ Thermally Enhanced Design
 - Azon pour and debridge thermal break is 1/2" wide in all main frame and vent rail extrusions
 - Assembled with heavy duty Monticelli cast aluminum corner keys
 - Mitered and pressure sealed internally with injected silicone through corner key passages. Wrap-around marine glazing
- ◇ Glazing
 - 1" insulated glass
- ◇ Hardware
 - 4-Bar hinges
 - Low profile cam handle
 - Pole Operated handle
 - Custodial lock
- ◇ Screen
 - Extruded aluminum screen frame with BetterVue™ mesh with Watershed® technology

Options

- ◇ Available Configurations
 - Project-in hopper
- ◇ Muntin Choices
 - Internal or simulated divided lites available
- ◇ Limited travel hardware
- ◇ Nailing Fin
- ◇ Screen
 - Extruded aluminum screen frame with aluminum wire mesh
 - Extruded aluminum screen frame with sunscreen mesh
 - Extruded aluminum screen frame with stainless steel 0.009" thickness mesh
- ◇ Glazing
 - Multiple Low-E and argon glazing choices
 - Capillary tubes
 - Optional glazing stop to accept 1 3/8" (triple) glazing
 - Wide variety of glazing, tinting and thickness options
- ◇ Panning & Trim Choices
 - Wide variety of panning, receptor and trim available
- ◇ Mulling
 - Wide variety of structural mulls

Benefits

- ◇ The capacity to match exterior colors for unique project facades
- ◇ The ability to facilitate large sizes for taller and wider window openings

Performance

- ◇ Structural & Thermal (test reports or thermal simulations available upon request)

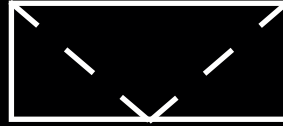
Model	E600 Project-In (Hopper)
Test Size	60" x 36"
NAFS Rating	AW-100
Structural Load P.S.F.	150
Air Infiltration (cfm/ft ²)	<0.10
Water (No Penetration) P.S.F.	up to 15
U-Value (ranges based on multiple Low-E/Argon combinations)	0.14-0.50
SHGC (ranges based on multiple Low-E/Argon combinations)	0.10-0.68

Operating Force: 12 lbf
(maintain motion), 9 lbf
(latches)

Due to periodic re-certification requirements, result shown may vary.

Our products are tested to the standards of and certified by some of the foremost organizations in the fenestration industry.

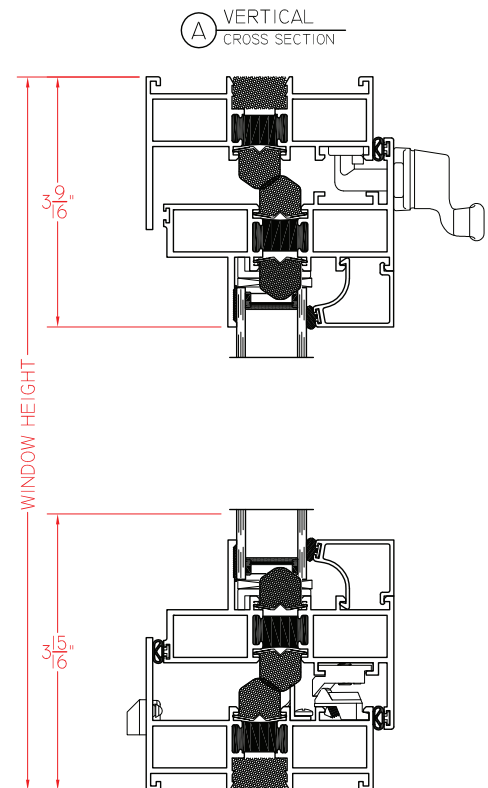
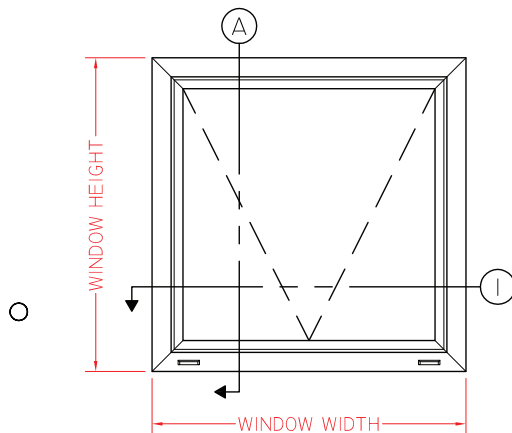
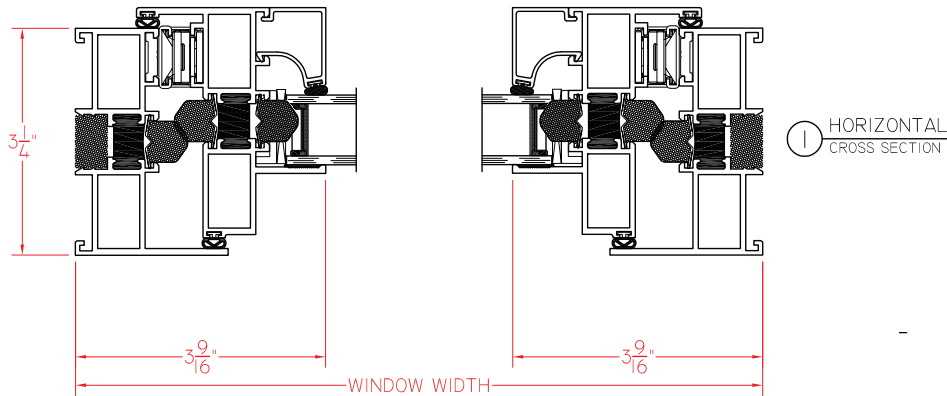




E600 Series 3 1/4" Frame Depth Project-In (Hopper)

E600 Project-in

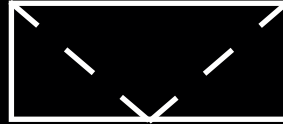
This document contains confidential and proprietary information intended for the private use of Quaker. © 2016 Quaker Window Products Co., Inc.. All rights reserved. Quaker reserves the right to change any/all designs without notice.



SCALE 1:2

Our products are tested to the standards of and certified by some of the foremost organizations in the fenestration industry.

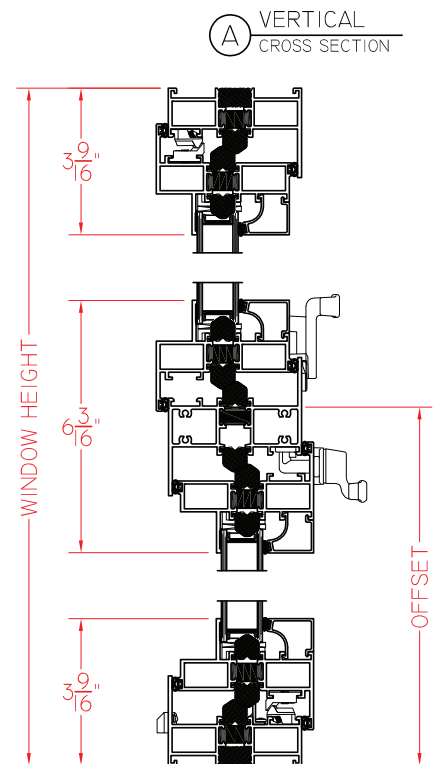
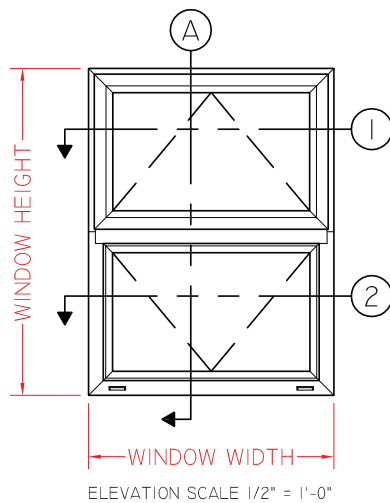
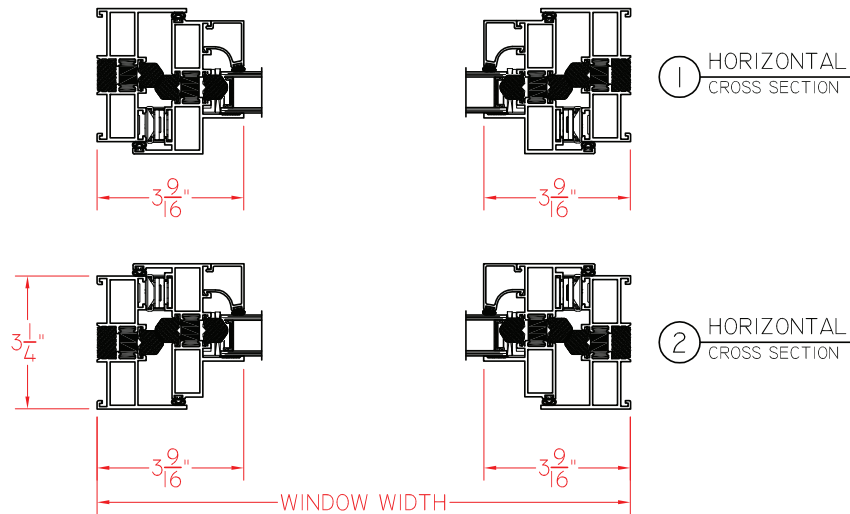




E600 Series 3 1/4" Frame Depth Project-In (Hopper)

E600 Project-out/Project-in (stacked)

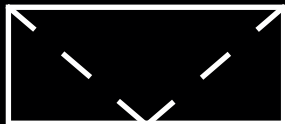
This document contains confidential and proprietary information intended for the private use of Quaker. © 2016 Quaker Window Products Co., Inc.. All rights reserved. Quaker reserves the right to change any/all designs without notice.



SCALE 1:4

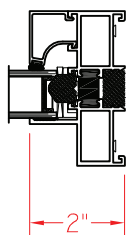
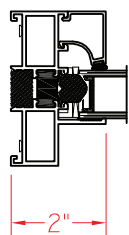
Our products are tested to the standards of and certified by some of the foremost organizations in the fenestration industry.



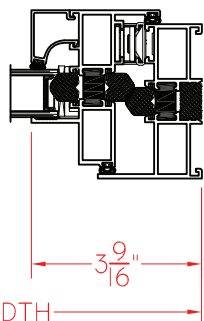
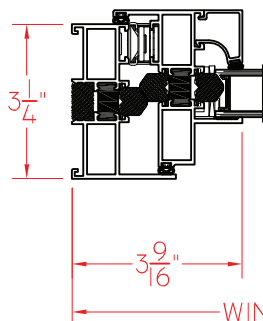


E600 Series 3 1/4" Frame Depth Project-In (Hopper)

E600 Fixed/Project-In (stacked)

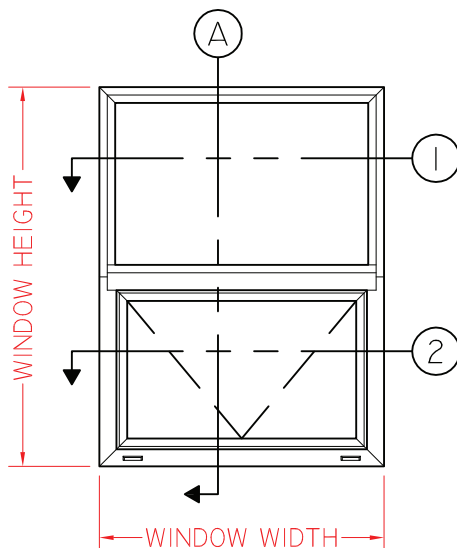
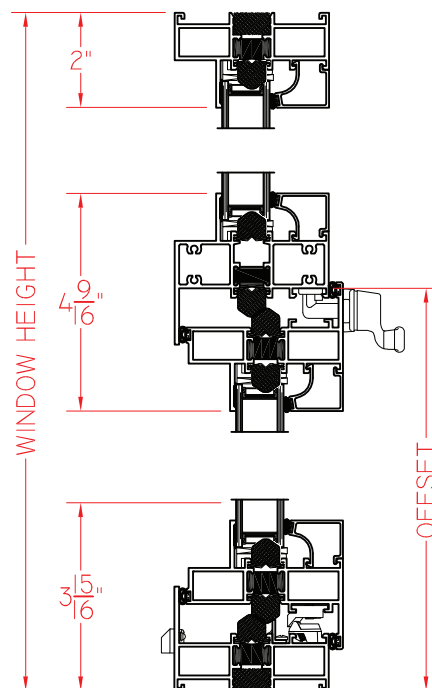


① HORIZONTAL
CROSS SECTION



② HORIZONTAL
CROSS SECTION

Ⓐ VERTICAL
CROSS SECTION



ELEVATION SCALE 1/2" = 1'-0"

This document contains confidential and proprietary information intended for the private use of Quaker. © 2016 Quaker Window Products Co., Inc.. All rights reserved. Quaker reserves the right to change any/all designs without notice.

SCALE 1:4

Our products are tested to the standards of and certified by some of the foremost organizations in the fenestration industry.

