



M600 Series Project-Out

Features

- ◇ Material
 - Extruded Aluminum
- ◇ Commercial Framing System
 - 3 1/4" main frame
 - Sealable corner keys
 - Crimp/Screw connections
 - 0.094" wall thickness of interior and exterior walls, 0.070" wall thickness elsewhere
- ◇ Enhanced Design
 - Azo-braided channel receives Azon pour and de-bridge thermal break which is 1/2" wide in all main frame and vent rail extrusions
 - Clean squared edges
 - 3" narrow sitelines
- ◇ With or Without Integral Nailing Fin
- ◇ Glazing
 - 1" insulated glass
- ◇ Hardware
 - Heavy-commercial Truth Contour™ locking system (Crank-out only)
 - Low profile cam handle (Push-Out only)
 - Crank-out available (4-Bar hinges or butt hinges)
 - Push-out available (4-Bar hinges)
- ◇ Screen
 - Wicket screen (Push-Out only)
 - Standard screens (Crank-Out/Roto only)
- ◇ Meets ADA Requirements (ADA Handle Required, Crank-Out/Roto only)

Options

- ◇ Available Configurations
 - Project-out
 - Push-Out or Crank-Out
 - Continuous frame capabilities
- ◇ Muntin Choices
 - Internal or simulated divided lites available
- ◇ Limited travel hardware
- ◇ Glazing
 - Multiple Low-E and argon glazing choices
 - Triple glazing (Energy TG)
 - Capillary tubes
 - Wide variety of glazing, tinting and thickness options
- ◇ Panning & Trim Choices
 - Wide variety of panning, receptor and trim available
- ◇ Mulling
 - Wide variety of structural mulls

Benefits

- ◇ The capacity to match exterior colors for unique project facades
- ◇ The ability to facilitate large sizes for taller and wider window openings
- ◇ Modern appearance merged with superior structural integrity
- ◇ Florida Product Approval # 27676

Performance

- ◇ Structural & Thermal (test reports or thermal simulations available upon request)

Model	M600 Project-Out
Test Sizes	60" x 36"
NAFS Rating	AW-70
Air Infiltration (cfm/ft ²)	<.10
Water (No Penetration) P.S.F.	up to 15
U-Value (ranges based on multiple Low-E/Argon combinations)	0.32-0.57
SHGC (ranges based on multiple Low-E/Argon combinations)	
CR (ranges based on multiple Low-E/Argon combinations)	29-47
STC/OITC	41-43/33-34

Operating Force: 6 lbf (maintain motion),
8 lbf (latches), 3 lbf (ADA Handle)

Due to periodic re-certification requirements, result shown may vary.

Our products are tested to the standards of and certified by some of the foremost organizations in the fenestration industry.



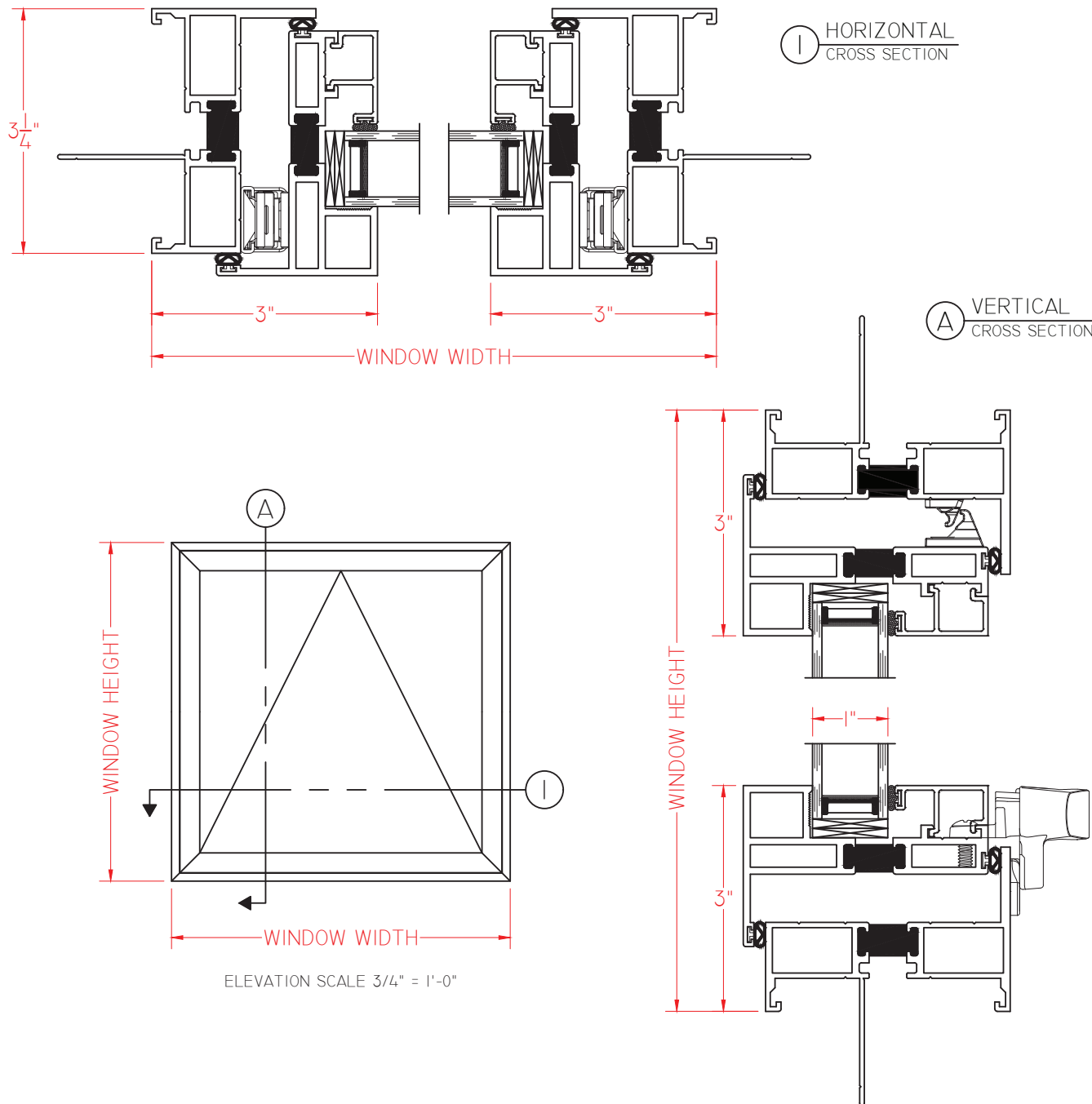


M600 Series 3 1/4" Frame Depth Project-Out

M600 Series Project-Out (Push-Out)

With Nailing Fin and
Push-Out Hardware

This document contains confidential and proprietary information intended for the private use of Quaker.
© 2016 Quaker Window Products Co., Inc.. All rights reserved.
Quaker reserves the right to change any/all designs without notice.



Our products are tested to the standards of and certified by some of the foremost organizations in the fenestration industry.



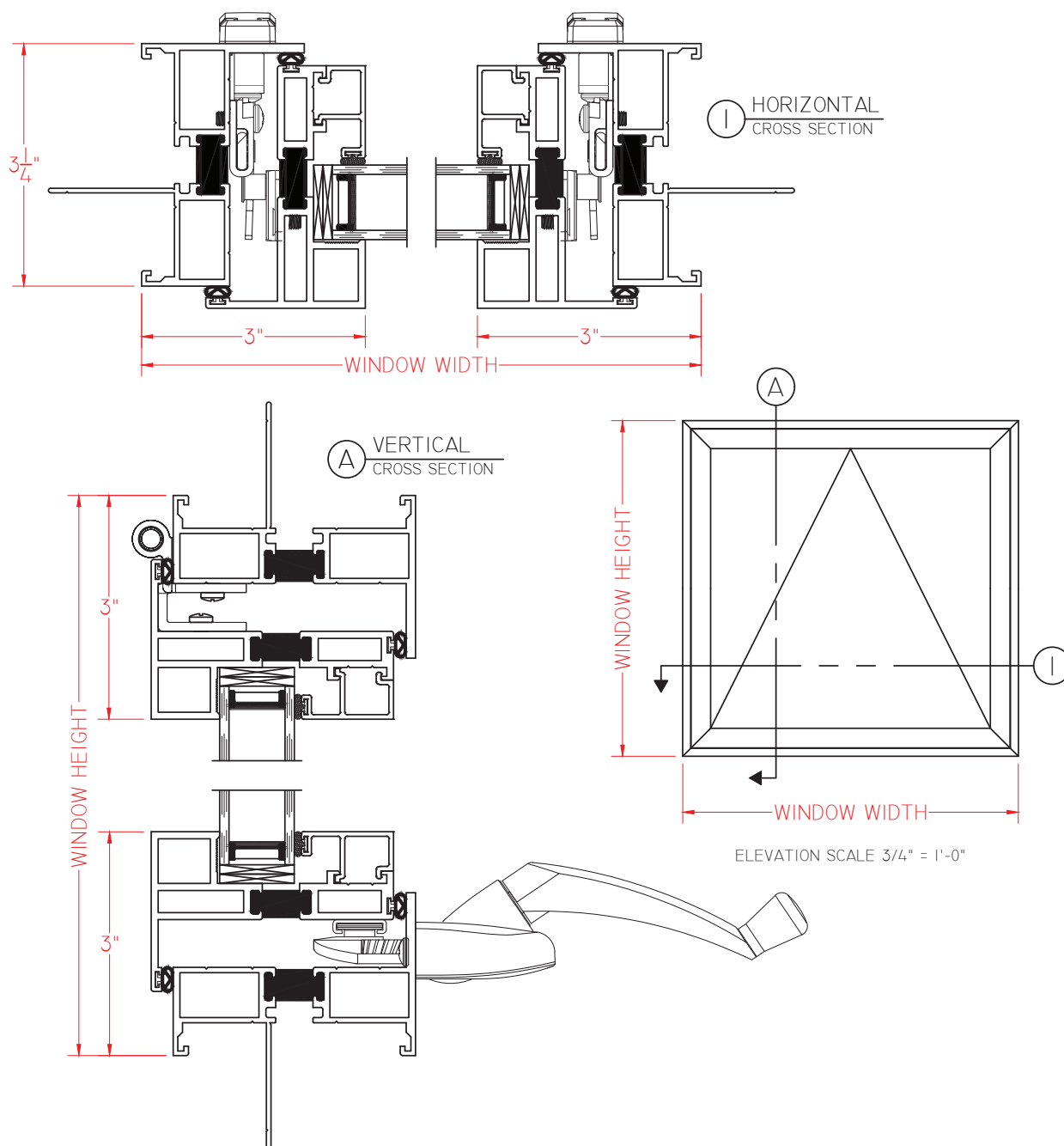




M600 Series Project-Out (Crank-Out)

With Nailing Fin and
Roto Hardware

This document contains confidential and proprietary information intended for the private use of Quaker.
© 2016 Quaker Window Products Co., Inc.. All rights reserved.
Quaker reserves the right to change any/all designs without notice.



Our products are tested to the standards of and certified by some of the foremost organizations in the fenestration industry.

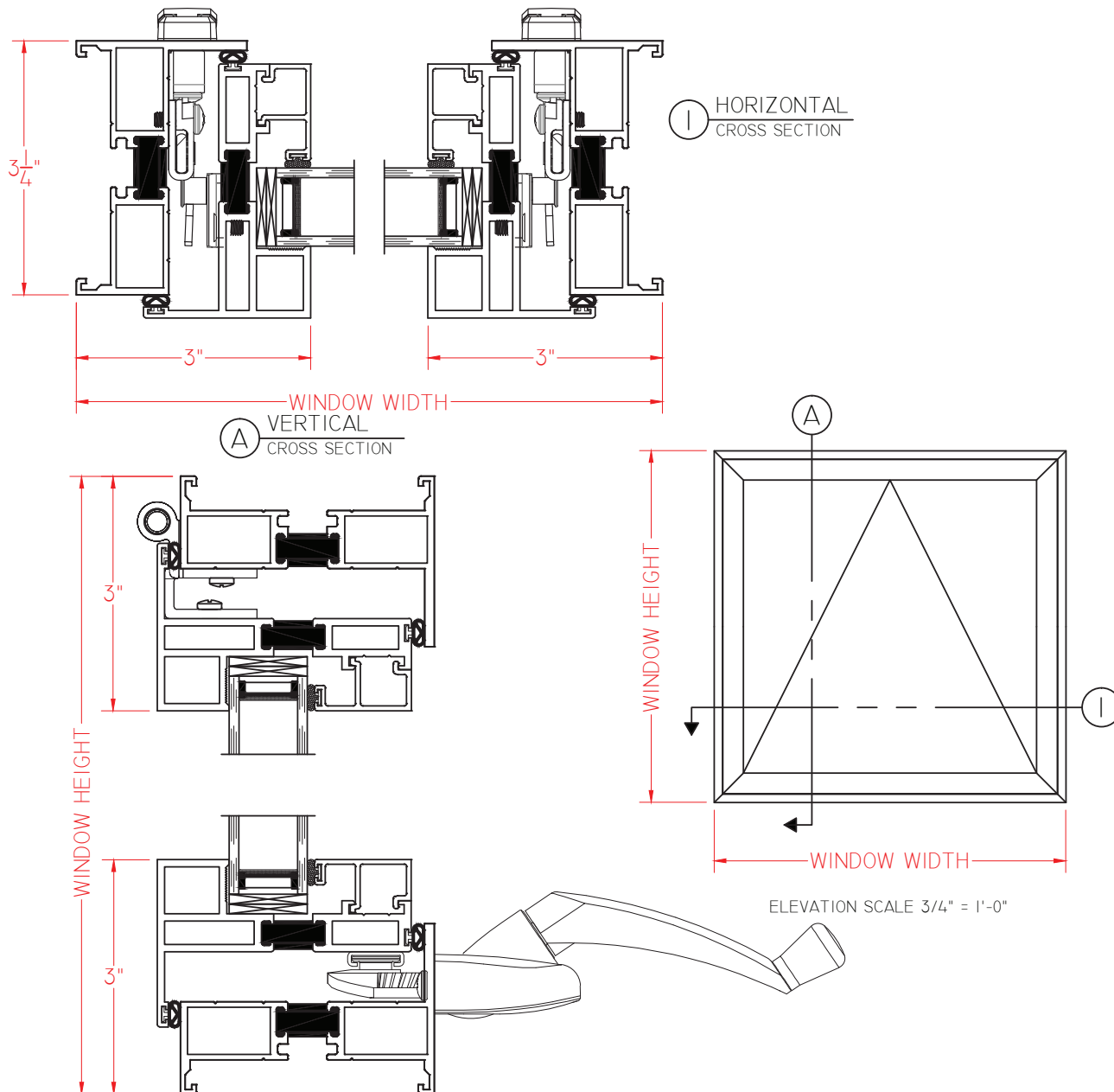




M600 Series Project-Out (Crank-Out)

Without Nailing Fin and
With Roto Hardware

This document contains confidential and proprietary information intended for the private use of Quaker.
© 2016 Quaker Window Products Co., Inc.. All rights reserved.
Quaker reserves the right to change any/all designs without notice.



Our products are tested to the standards of and certified by some of the foremost organizations in the fenestration industry.



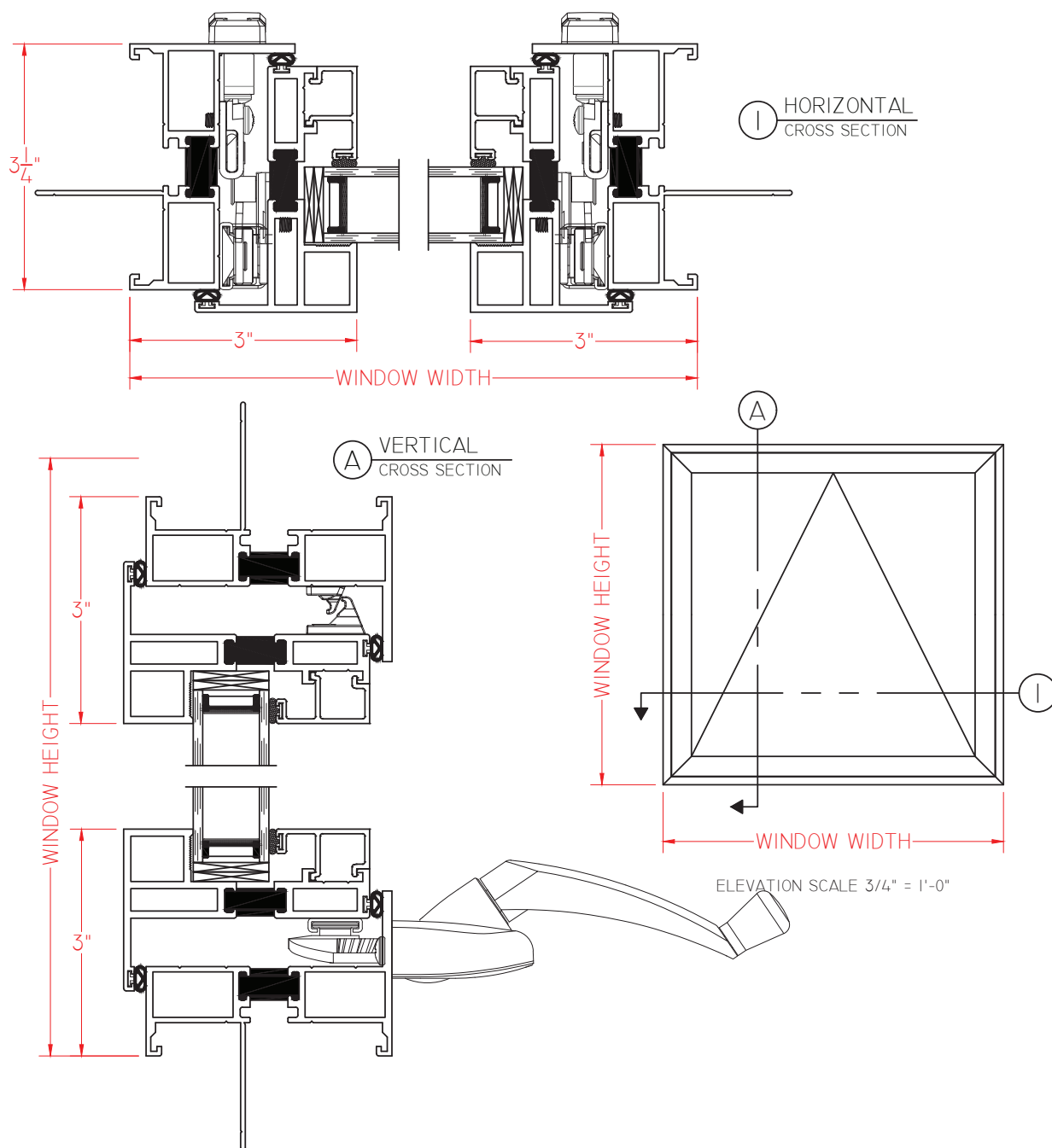


M600 Series 3 1/4" Frame Depth Project-Out

M600 Series Project-Out (Crank-Out)

With Nailing Fin,
4-bar Hinge and
Roto Hardware

This document contains confidential and proprietary information intended for the private use of Quaker.
© 2016 Quaker Window Products Co., Inc.. All rights reserved.
Quaker reserves the right to change any/all designs without notice.



Our products are tested to the standards of and certified by some of the foremost organizations in the fenestration industry.



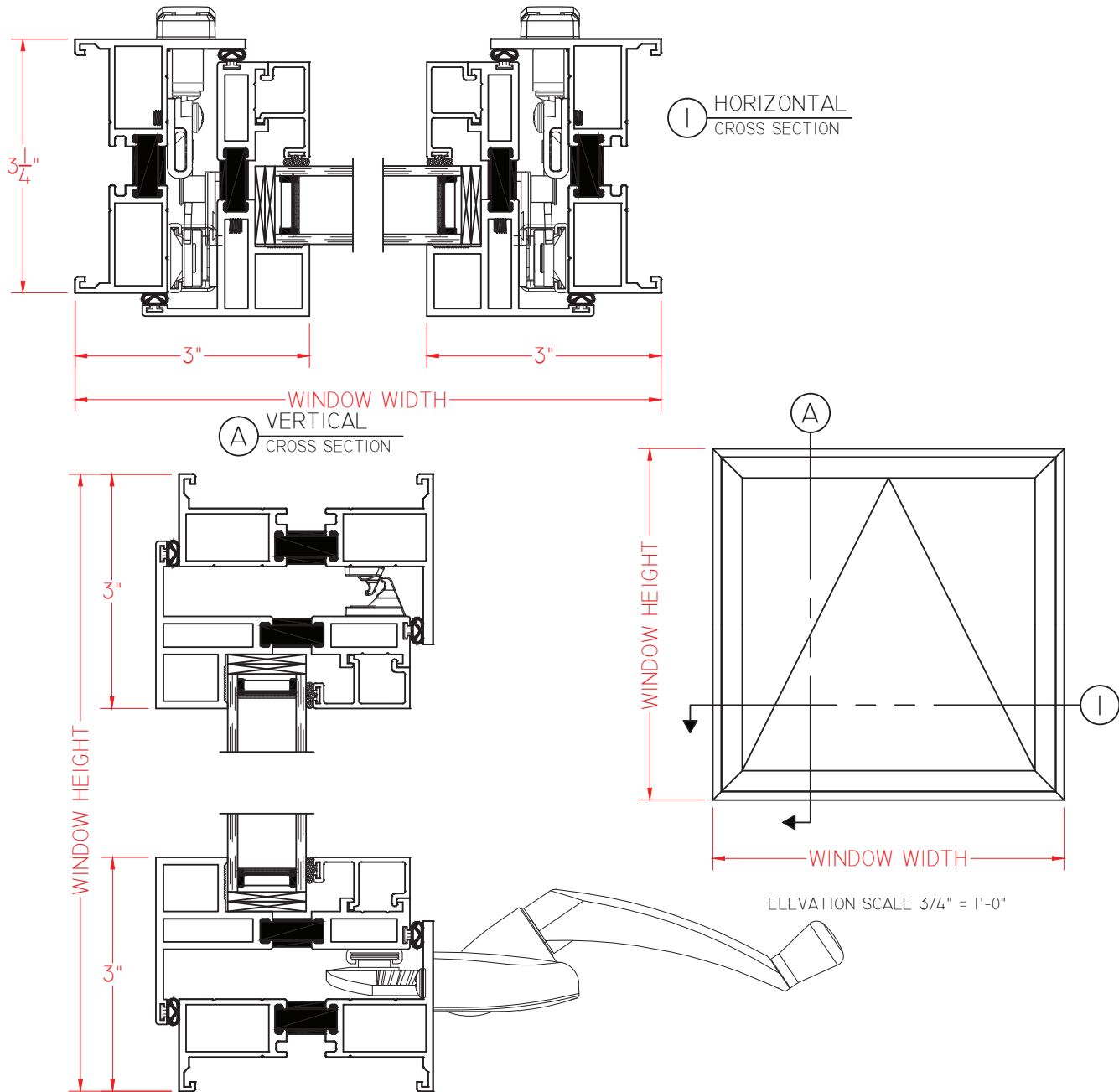


M600 Series 3 1/4" Frame Depth Project-Out

M600 Series Project-Out (Crank-Out)

Without Nailing Fin,
With 4-bar Hinge and
Roto Hardware

This document contains confidential and proprietary information intended for the private use of Quaker.
© 2016 Quaker Window Products Co., Inc.. All rights reserved.
Quaker reserves the right to change any/all designs without notice.



Our products are tested to the standards of and certified by some of the foremost organizations in the fenestration industry.

