



V250 Series Project-Out

Features

- ◇ **Material**
 - Pure, uPVC Vinyl
- ◇ **Commercial Framing System**
 - 3 1/4" main frame
- ◇ **Enhanced Design**
 - Mitered and welded corners
- ◇ **Glazing**
 - 3/4" insulated glass
- ◇ **Hardware**
 - Single point locking system with fold-down handle to avoid interference with window blinds
- ◇ **Screen**
 - Extruded aluminum screen frame with BetterVue™ mesh with WaterShed® technology
- ◇ **Colors**
 - White or Sandstone vinyl (interior/exterior)

Benefits

- ◇ The capacity to match exterior colors for unique project facades
- ◇ The ability to facilitate large sizes for taller and wider window openings

Performance

- ◇ Structural & Thermal (test reports or thermal simulations available upon request)

Model	V250 Project-Out
Test Size	48" x 24"
NAFS Rating	LC-35
Structural Load P.S.F.	50
Air Infiltration (cfm/ft²)	<0.30
Water (No Penetration) P.S.F.	5.25
U-Value (ranges based on multiple Low-E/Argon combinations)	0.25–0.46
SHGC (ranges based on multiple Low-E/Argon combinations)	0.10–0.52

Options

- ◇ **Available Configurations**
 - Project-out
- ◇ **Muntin Choices**
 - Internal or simulated divided lites available
- ◇ **Limited travel hardware**
- ◇ **Nailing Fin**
- ◇ **Screen**
 - Extruded aluminum screen frame with aluminum wire mesh
 - Extruded aluminum screen frame with sunscreen mesh
 - Extruded aluminum screen frame with stainless steel 0.009" thickness mesh
- ◇ **Glazing**
 - Multiple Low-E and argon glazing choices
 - Triple glazing (Energy TG)
 - Capillary tubes
 - Wide variety of glazing, tinting and thickness options
- ◇ **Panning & Trim Choices**
 - Wide variety of panning, receptor and trim available
- ◇ **Mulling**
 - Wide variety of structural mulls
- ◇ **Colors**
 - High-performance Textured Black laminate (interior/exterior)
 - High-performance Textured Black laminate, Textured Dark Bronze laminate, Textured Dark Grey laminate or Resembles Clear Anodized laminate (exterior only with White vinyl)
 - Twelve painted exterior colors (with White or Sandstone vinyl interior)
 - Unlimited custom painted exterior colors

Operating Force: 1 lbf (maintain motion),
3 lbf (locks)

Due to periodic re-certification requirements, result shown may vary.

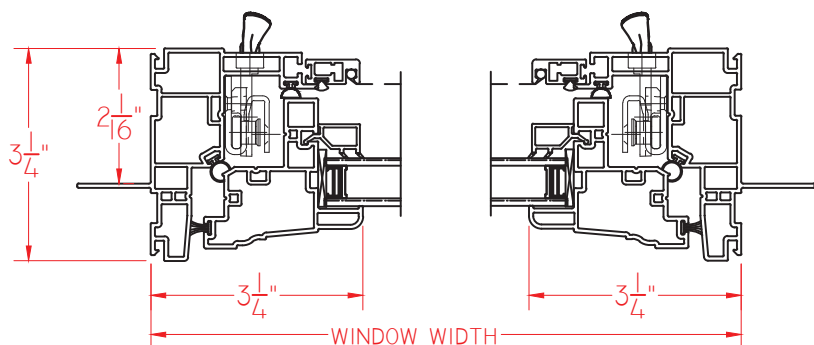
Our products are tested to the standards of and certified by some of the foremost organizations in the fenestration industry.



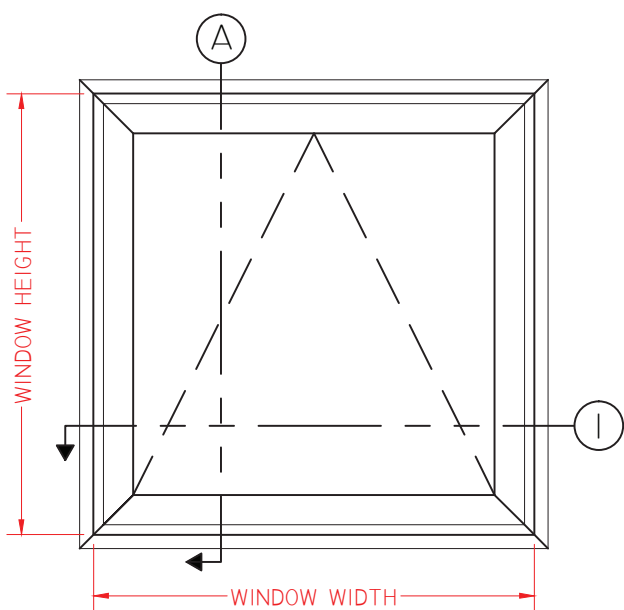


V250 Series Project-Out

This document contains confidential and proprietary information intended for the private use of Quaker.
© 2016 Quaker Window Products Co., Inc.. All rights reserved.
Quaker reserves the right to change any/all designs without notice.

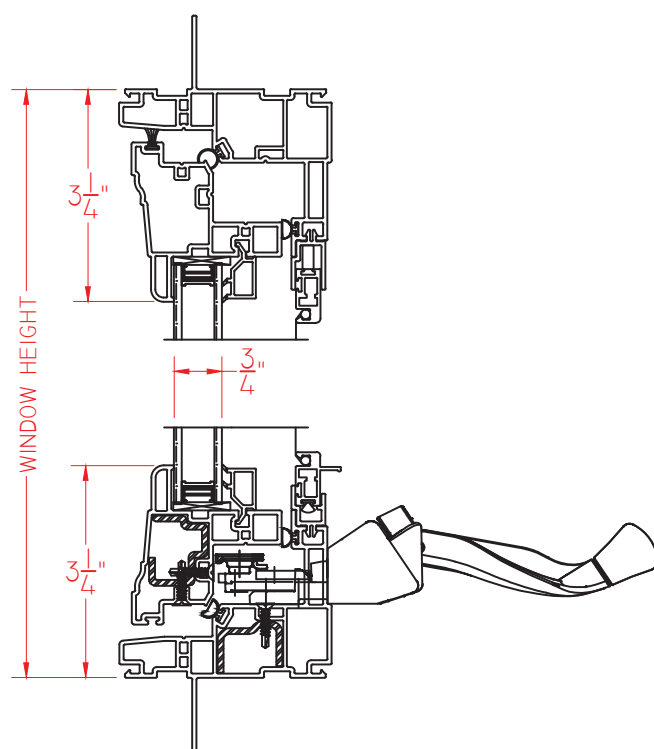


① HORIZONTAL
CROSS SECTION



ELEVATION SCALE 3/4" = 1'-0"

② VERTICAL
CROSS SECTION



SCALE 1:3

Our products are tested to the standards of and certified by some of the foremost organizations in the fenestration industry.

