

K200 Series 2 3/8" Frame Depth Horizontal Slider

K200 Series Horizontal Slider

Features

- ◇ Material
 - Extruded Aluminum
- ◇ Commercial Framing System
 - 2 3/8" main frame
 - 0.062" wall thickness of frame and sash
- ◇ Thermally Enhanced Design
 - Azon pour and debridge thermal break is 1/2" wide in all main frame and vent rail extrusions
 - Frame and sash mortised and joined with screw fasteners
 - Positive interlocks
 - Full length pull rail
- ◇ Glazing
 - 3/4" insulating glass
- ◇ Hardware
 - Brass rollers with stainless steel axle pins for easy operation
 - Sweep lock
- ◇ Screen
 - Extruded aluminum screen frame with BetterVue™ mesh with WaterShed® technology

Benefits

- ◇ The capacity to match exterior colors for unique project facades
- ◇ The ability to facilitate large sizes for taller and wider window openings

Performance

- ◇ Structural & Thermal (test reports or thermal simulations available upon request)

Model	Horizontal Slider
AAMA/WDMA/CSA 101/I.S.2/A440-08 Rating	CW-40
Test Size	72" x 60"
Structural Load P.S.F.	60
Air Infiltration (cfm/ft ²)	<0.30
Water (No Penetration) P.S.F.	6.06
U-Value (ranges based on multiple Low-E/Argon combinations)	0.37 - 0.68
SHGC (ranges based on multiple Low-E/Argon combinations)	0.12 - 0.61

Due to periodic re-certification requirements, result shown may vary.

Options

- ◇ Available Configurations
 - Fixed-Active
 - Active-Fixed
 - Active-Fixed-Active
 - Fixed-Active-Fixed
- ◇ Muntin Choices
 - Internal or simulated divided lites available
- ◇ Limited Travel Latch
- ◇ Nailing Fin
- ◇ Screen
 - Extruded aluminum screen frame with aluminum wire mesh
 - Extruded aluminum screen frame with sunscreen mesh
 - Extruded aluminum screen frame with stainless steel 0.009" thickness mesh
 - Security screen (limitations apply)
- ◇ Glazing
 - Multiple Low-E + argon glazing choices
 - Capillary tubes
 - Wide variety of glazing, tinting and thickness options
- ◇ Panning & Trim Choices
 - Wide variety of panning, receptor and trim available
- ◇ Mulling
 - Wide variety of structural mulls
- ◇ Specialty
 - Extension jambs
 - Louver

Operating Force: 16 lbf (maintain motion), 3 lbf (locks)

Our products are tested to the standards of and certified by some of the foremost organizations in the fenestration industry.

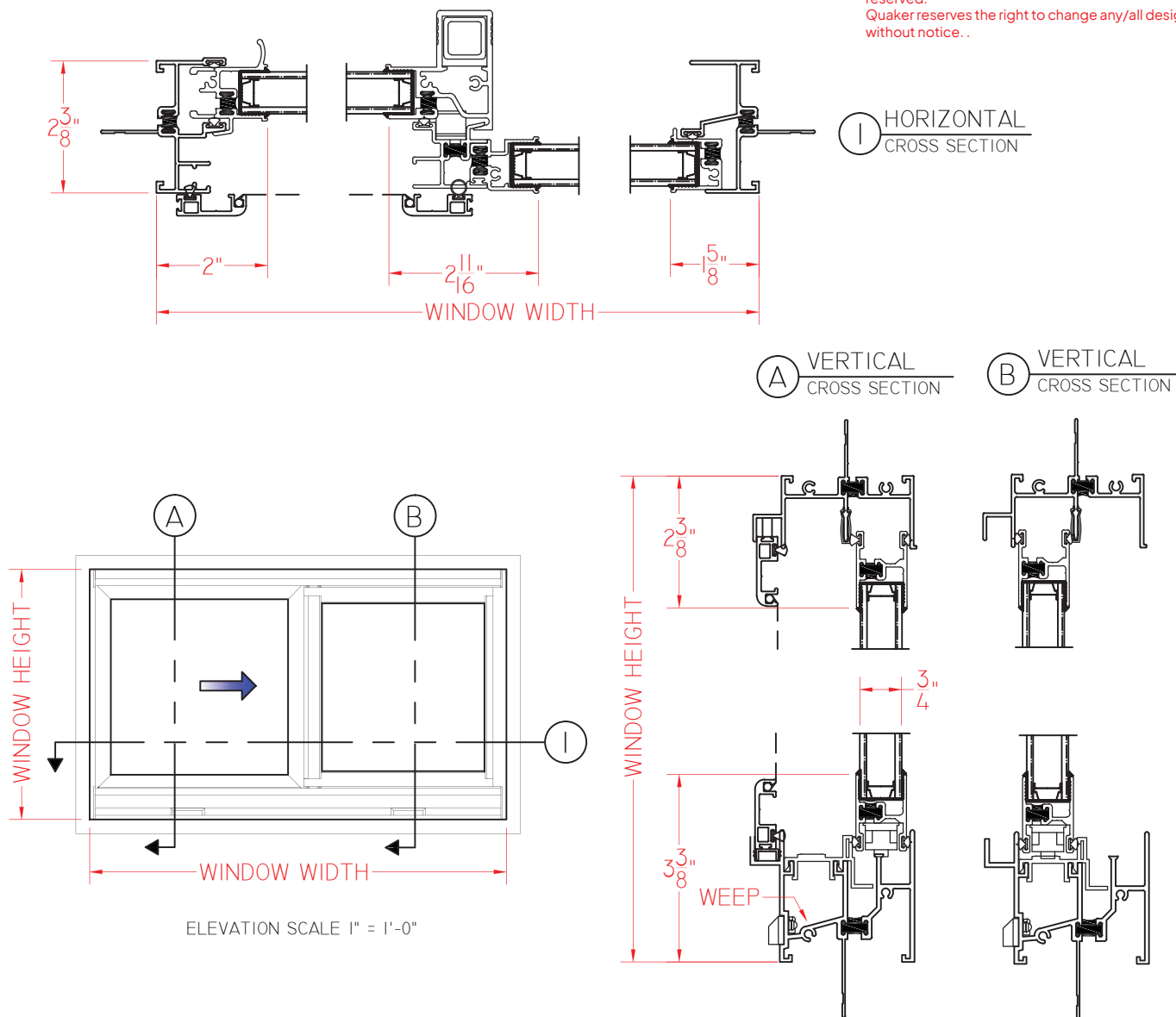




K200 Series 2 3/8" Frame Depth Horizontal Slider

K200 Series Horizontal Slider with Nailing Fin

This document contains confidential and proprietary information intended for the private use of Quaker. © 2016 Quaker Window Products Co., Inc. All rights reserved. Quaker reserves the right to change any/all designs without notice.



SCALE 1:3

Our products are tested to the standards of and certified by some of the foremost organizations in the fenestration industry.

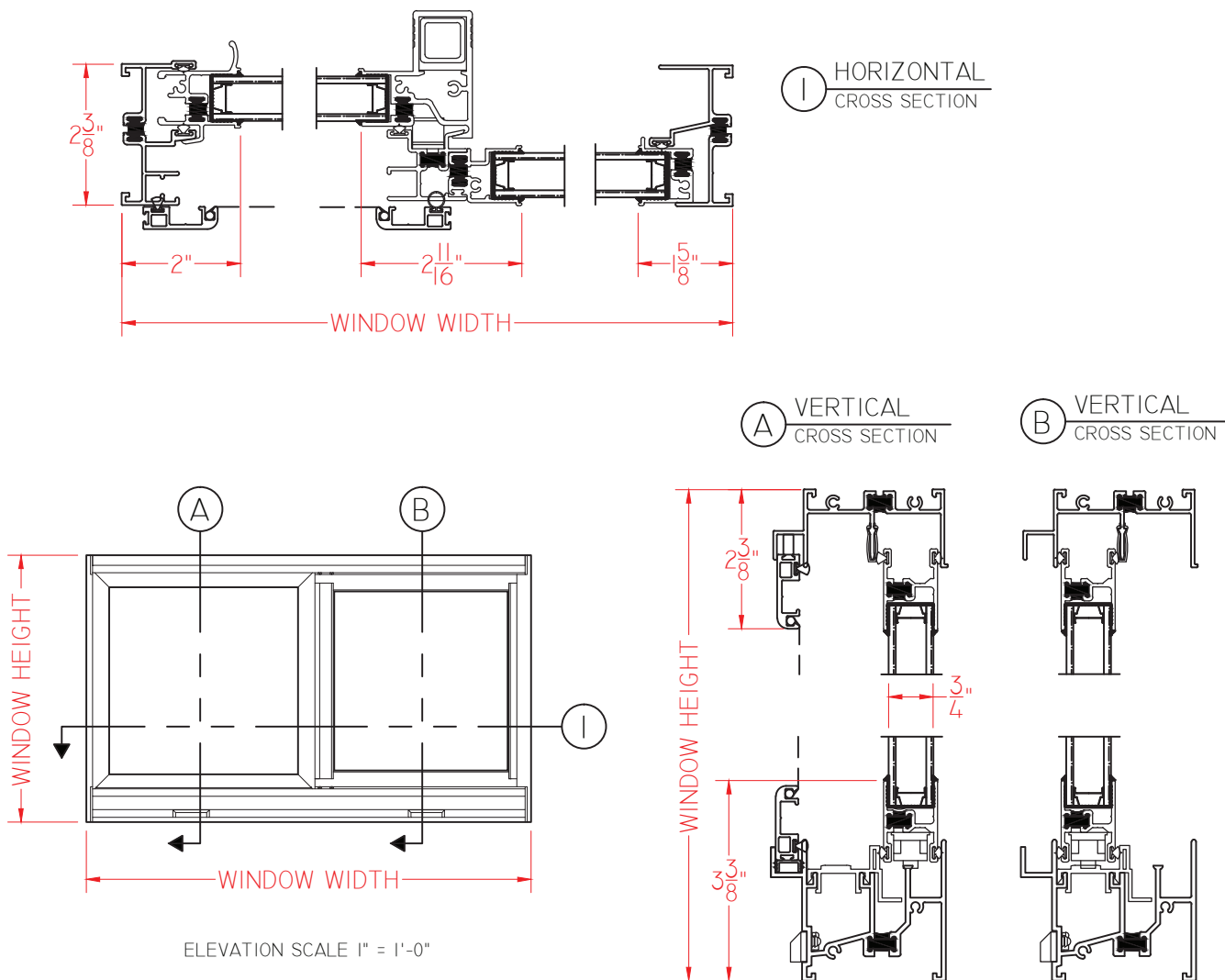




K200 Series 2 3/8" Frame Depth Horizontal Slider

K200 Series Horizontal Slider without Nailing Fin

This document contains confidential and proprietary information intended for the private use of Quaker.
© 2016 Quaker Window Products Co., Inc. All rights reserved.
Quaker reserves the right to change any/all designs without notice.



SCALE 1:3

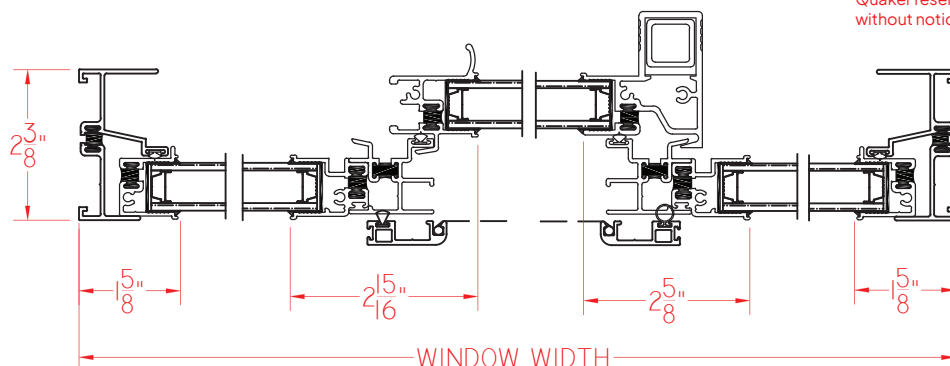
Our products are tested to the standards of and certified by some of the foremost organizations in the fenestration industry.



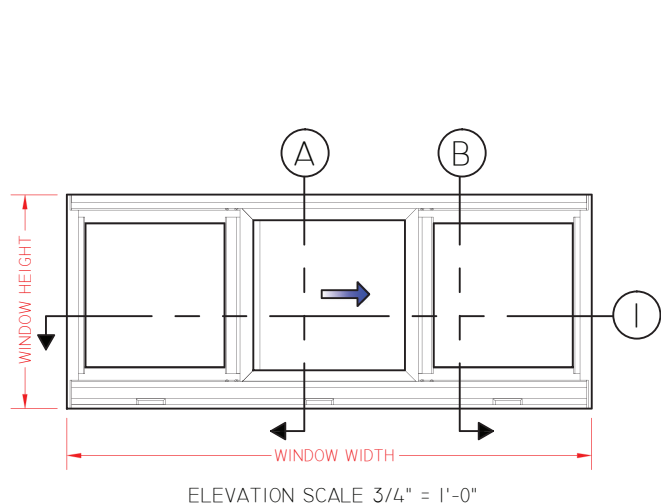


K200 Series Center Vent Horizontal Slider

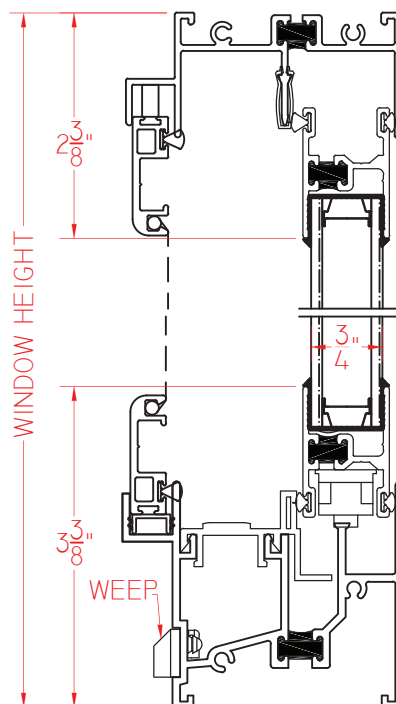
This document contains confidential and proprietary information intended for the private use of Quaker. © 2016 Quaker Window Products Co., Inc. All rights reserved. Quaker reserves the right to change any/all designs without notice..



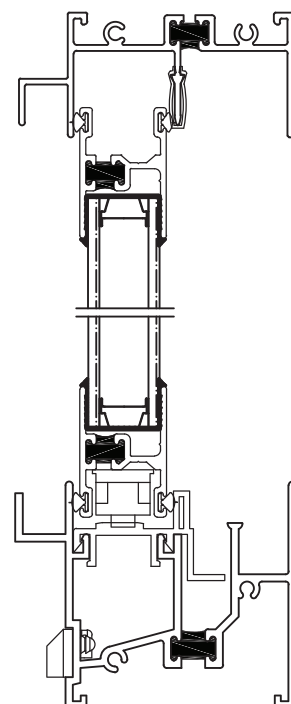
① HORIZONTAL CROSS SECTION



① A VERTICAL CROSS SECTION



① B VERTICAL CROSS SECTION



SCALE 1:3

Our products are tested to the standards of and certified by some of the foremost organizations in the fenestration industry.





K200 Series End Vent Horizontal Slider

HORIZONTAL CROSS SECTION

B VERTICAL
CROSS SECTION



800-347-0438