

V200 Series 3 1/4" Frame Depth Horizontal Slider

V200 Series Horizontal Slider

Features

- ◇ **Material**
 - uPVC Vinyl
- ◇ **Commercial Framing System**
 - 3 1/4" main frame
 - 0.060" wall thickness of frame, 0.055" wall thickness of sash
- ◇ **Enhanced Design**
 - Mitered and welded corners
- ◇ **Glazing**
 - 3/4" insulating glass
 - SSB glass panes
- ◇ **Hardware**
 - Brass rollers with stainless steel axle pins for easy operation
- ◇ **Screen**
 - Extruded aluminum screen frame with BetterVue™ mesh with WaterShed® technology
- ◇ **Colors**
 - White or Sandstone vinyl (interior/exterior)

Benefits

- ◇ The capacity to match exterior colors for unique project facades
- ◇ The ability to facilitate large sizes for taller and wider window openings

Performance

- ◇ Structural & Thermal (test reports or thermal simulations available upon request)

Model	Horizontal Slider
AAMA/WDMA/CSA 101/I.S.2/A440-08 Rating	R-50
Test Size	63" x 44"
Structural Load P.S.F.	75
Air Infiltration (cfm/ft²)	<0.30
Water (No Penetration) P.S.F.	up to 6
U-Value (ranges based on multiple Low-E/Argon combinations)	0.25-0.52
SHGC (ranges based on multiple Low-E/Argon combinations)	0.12-0.62

Due to periodic re-certification requirements, result shown may vary.

Options

- ◇ **Available Configurations**
 - Fixed-Active
 - Active-Fixed
 - Active-Fixed-Active
 - Fixed-Active-Fixed
- ◇ **Muntin Choices**
 - Internal or simulated divided lites available
- ◇ **Limited Travel Hardware**
- ◇ **Nailing Fin**
- ◇ **Screen**
 - Extruded aluminum screen frame with aluminum wire mesh
 - Extruded aluminum screen frame with sunscreen mesh
 - Extruded aluminum screen frame with stainless steel 0.009" thickness mesh
- ◇ **Glazing**
 - Capillary tubes
 - Wide variety of glazing, tinting and thickness options
- ◇ **Panning & Trim Choices**
 - Wide variety of panning, receptor and trim available
- ◇ **Mulling**
 - Wide variety of structural mulls
- ◇ **Colors**
 - High-performance Textured Black laminate (interior/exterior)
 - High-performance Textured Black, Textured Dark Bronze, Textured Dark Grey or Textured Resembles Clear Anodized laminate (exterior only with White vinyl interior)
 - Twelve painted exterior colors (with White or Sandstone vinyl interior)
 - Unlimited custom painted exterior colors

Operating Force: 24 lbf (Initiate motion),
7 lbf (Maintain motion), 1 lbf (Locks)

Our products are tested to the standards of and certified by some of the foremost organizations in the fenestration industry.

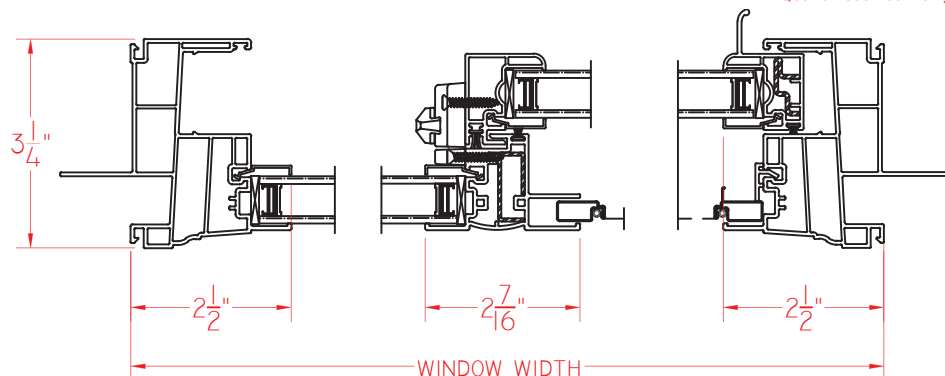




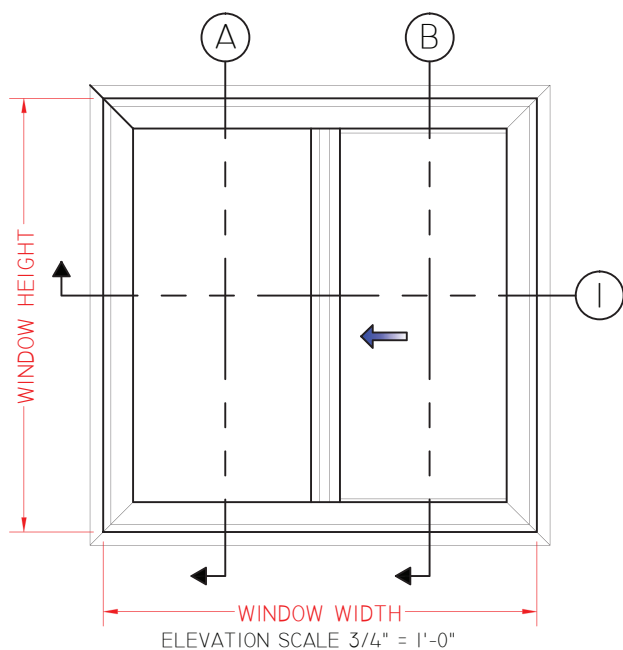
V200 Series 3 1/4" Frame Depth Horizontal Slider

V200 Series Horizontal Slider

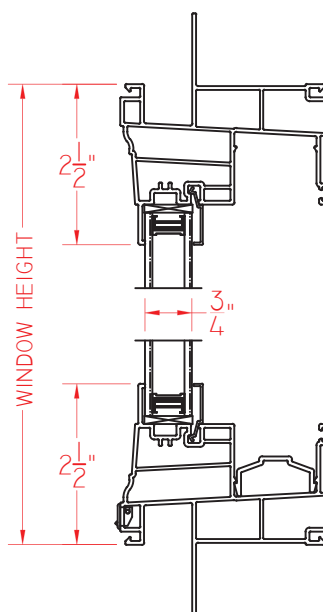
This document contains confidential and proprietary information intended for the private use of Quaker.
© 2016 Quaker Window Products Co., Inc. All rights reserved.
Quaker reserves the right to change any/all designs without notice.



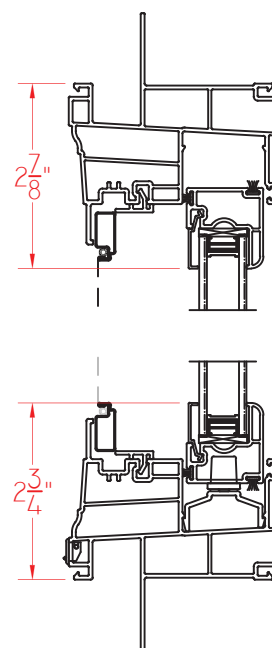
① HORIZONTAL
CROSS SECTION



② VERTICAL
CROSS SECTION



③ VERTICAL
CROSS SECTION



SCALE 1:3

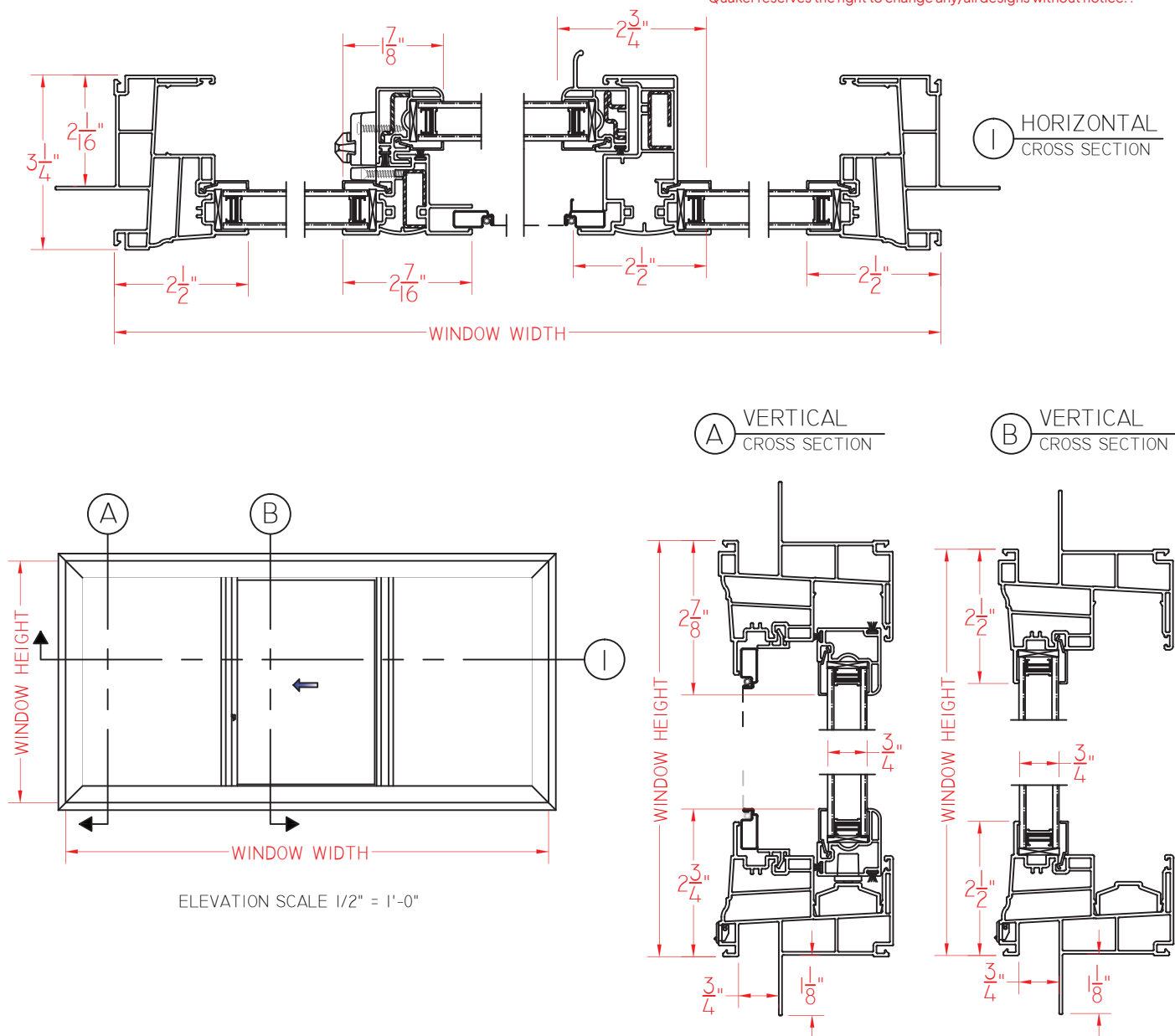
Our products are tested to the standards of and certified by some of the foremost organizations in the fenestration industry.





V200 Series Center Vent Horizontal Slider

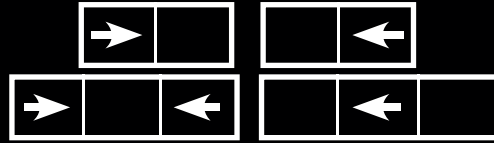
This document contains confidential and proprietary information intended for the private use of Quaker.
© 2016 Quaker Window Products Co., Inc. All rights reserved.
Quaker reserves the right to change any/all designs without notice.



SCALE 1:3

Our products are tested to the standards of and certified by some of the foremost organizations in the fenestration industry.

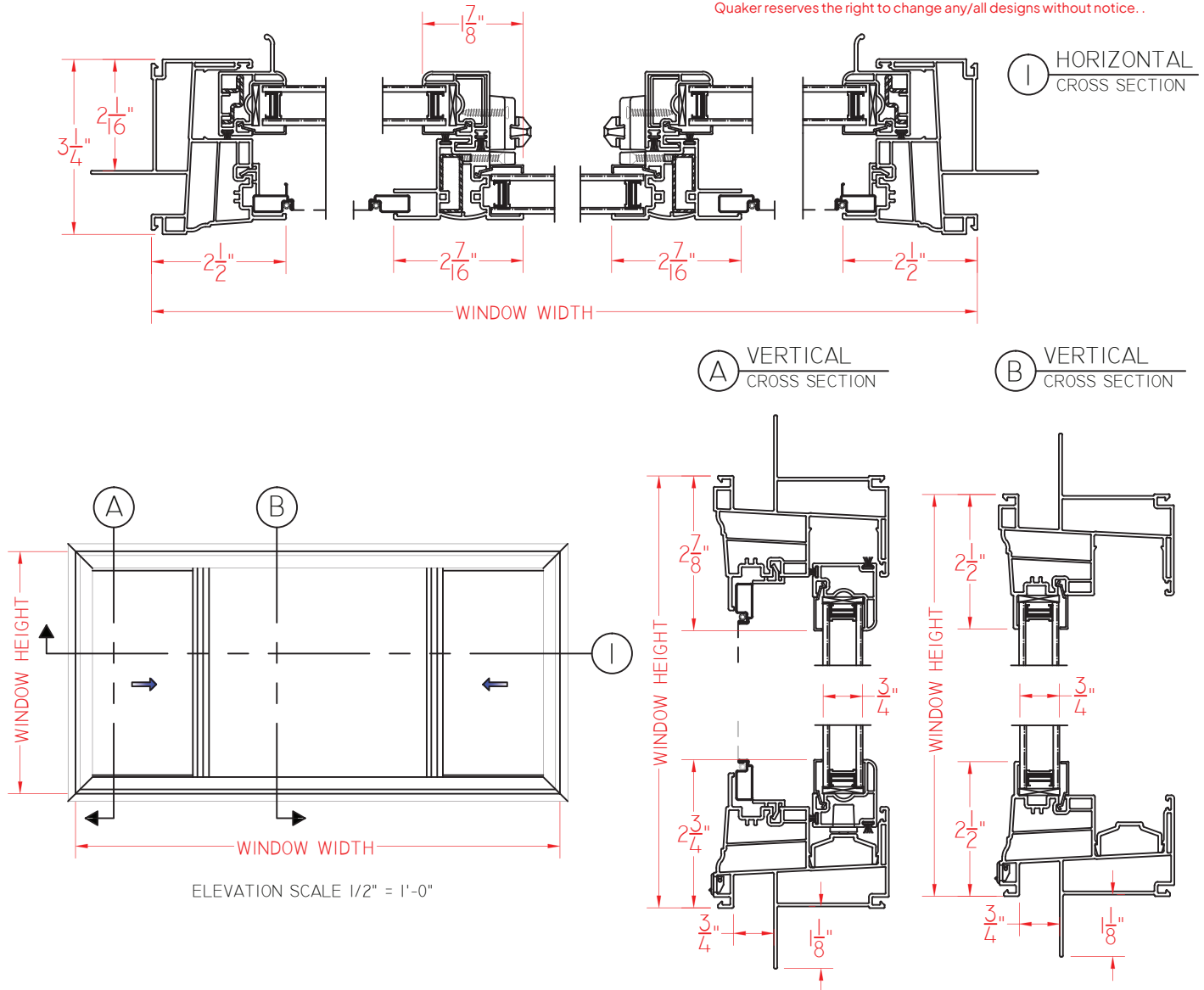




V200 Series 3 1/4" Frame Depth Horizontal Slider

V200 Series End Vent Horizontal Slider

This document contains confidential and proprietary information intended for the private use of Quaker.
© 2016 Quaker Window Products Co., Inc. All rights reserved.
Quaker reserves the right to change any/all designs without notice.



SCALE 1:3

Our products are tested to the standards of and certified by some of the foremost organizations in the fenestration industry.

