



# V150 4 7/8" Frame Depth Sliding Door

## V150 Series Sliding Door

### Features

- ◇ **Material**
  - Pure, uPVC Vinyl
- ◇ **Framing System**
  - 4 7/8" main frame
- ◇ **Enhanced Design**
  - Mitered and fusion welded corners
  - Integral nailing fin
  - Aluminum panel roller track
  - Galvanized steel reinforcements
- ◇ **Glazing**
  - 7/8" insulating glass
- ◇ **Hardware**
  - Heavy-duty tandem wheel rollers make operation easy and smooth
  - D-Loop hardware with either thumb latch or keyed locking system
- ◇ **Screen**
  - Extruded aluminum frame with BetterVue™ mesh with WaterShed® technology
- ◇ **Colors**
  - White vinyl (interior/exterior)

### Benefits

- ◇ Perfect value-engineered product for commercial projects 3-stories and less
- ◇ Integral Nail Fin system allows the V150 Series to adapt to any project's build

### Performance

- ◇ Structural & Thermal (test reports and thermal simulations available upon request)

Model	2-panel
AAMA/WDMA/CSA 101/I.S.2/A440-08 Rating	R-PG50
Test Size	71" x 80"
Structural Load P.S.F.	75.00
Air Infiltration	
Water Resistance (P.S.F.)	7.50
CR (Condensation Resistance)	58-59
U-Value (with EnergyBasic or Energy 3S glass package)	0.28 / 0.29
SHGC (with EnergyBasic or Energy 3S glass package)	0.22 / 0.34

### Options

- ◇ **Available Configurations**
  - Fixed-Active
  - Active-Fixed
- ◇ **Framing System**
  - Panels are reversible (6'8" size only. In-field assembly will be required)
- ◇ **Muntin Choices**
  - 5/8" Internal lites available
- ◇ **Screen**
  - Extruded aluminum screen frame with aluminum wire mesh
  - Extruded aluminum screen frame with sunscreen mesh
- ◇ **Glazing**
  - EnergyBasic Low-E Glass
  - Energy 3S Low-E glass
  - Capillary tubes
- ◇ **Mulling**
  - Choose from standard zero mull or 1/2" structural mull
- ◇ **Colors**
  - High-performance Textured Black laminate (interior/exterior)
  - High-performance Textured Black laminate or Textured Dark Grey laminate (exterior with White vinyl interior)

CR, U-Value and SHGC values shown are a range based on the glass packages available for this product. Test results were achieved through all-window testing (not center-of-glass testing), and without grids. The addition of optional grids may cause the results to vary slightly.

Due to periodic re-certification requirements, result shown may vary.

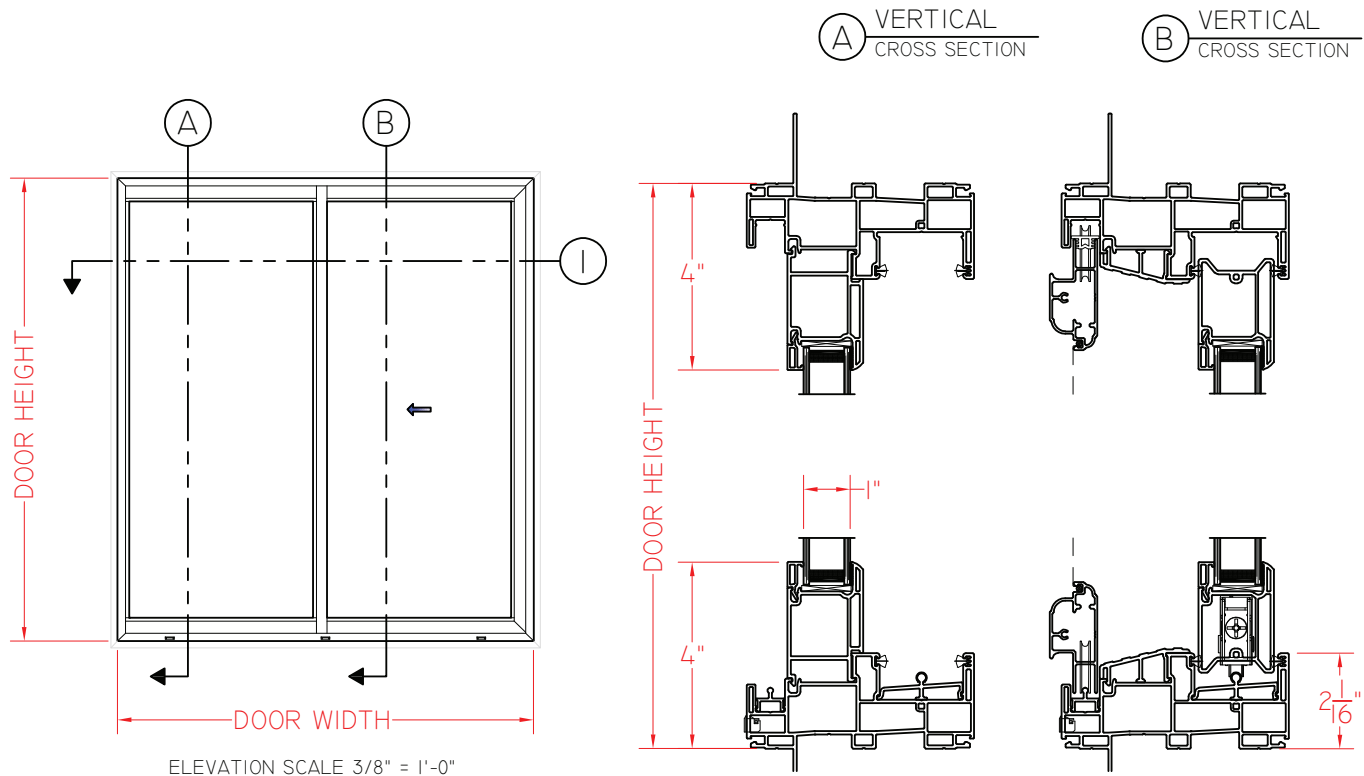
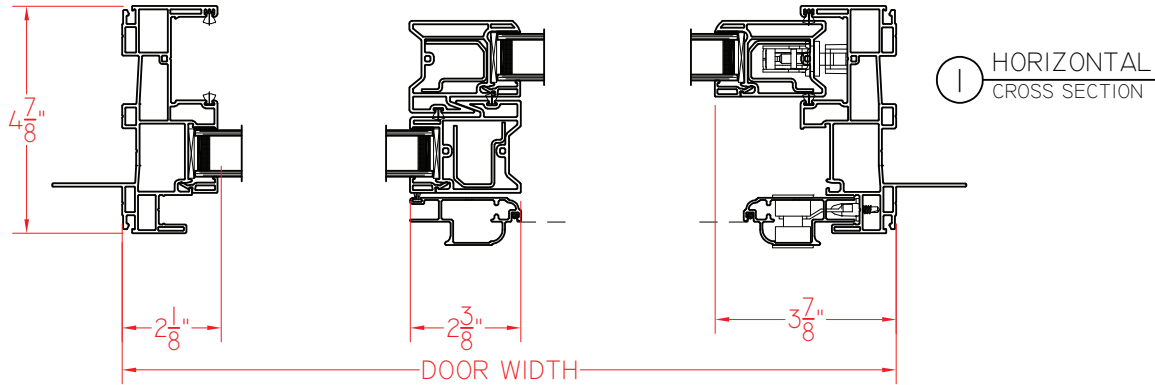
Our products are tested to the standards of and certified by some of the foremost organizations in the fenestration industry.



## V150 Series Sliding Door

**Fixed/Active (shown) or Active/Fixed**  
**\*as viewed from exterior**

This document contains confidential and proprietary information intended for the private use of Quaker.  
© 2019 Quaker Window Products Co., Inc.. All rights reserved.  
Quaker reserves the right to change any/all designs without notice. Due to periodic re-certification requirements, result shown may vary.



Our products are tested to the standards of and certified by some of the foremost organizations in the fenestration industry.

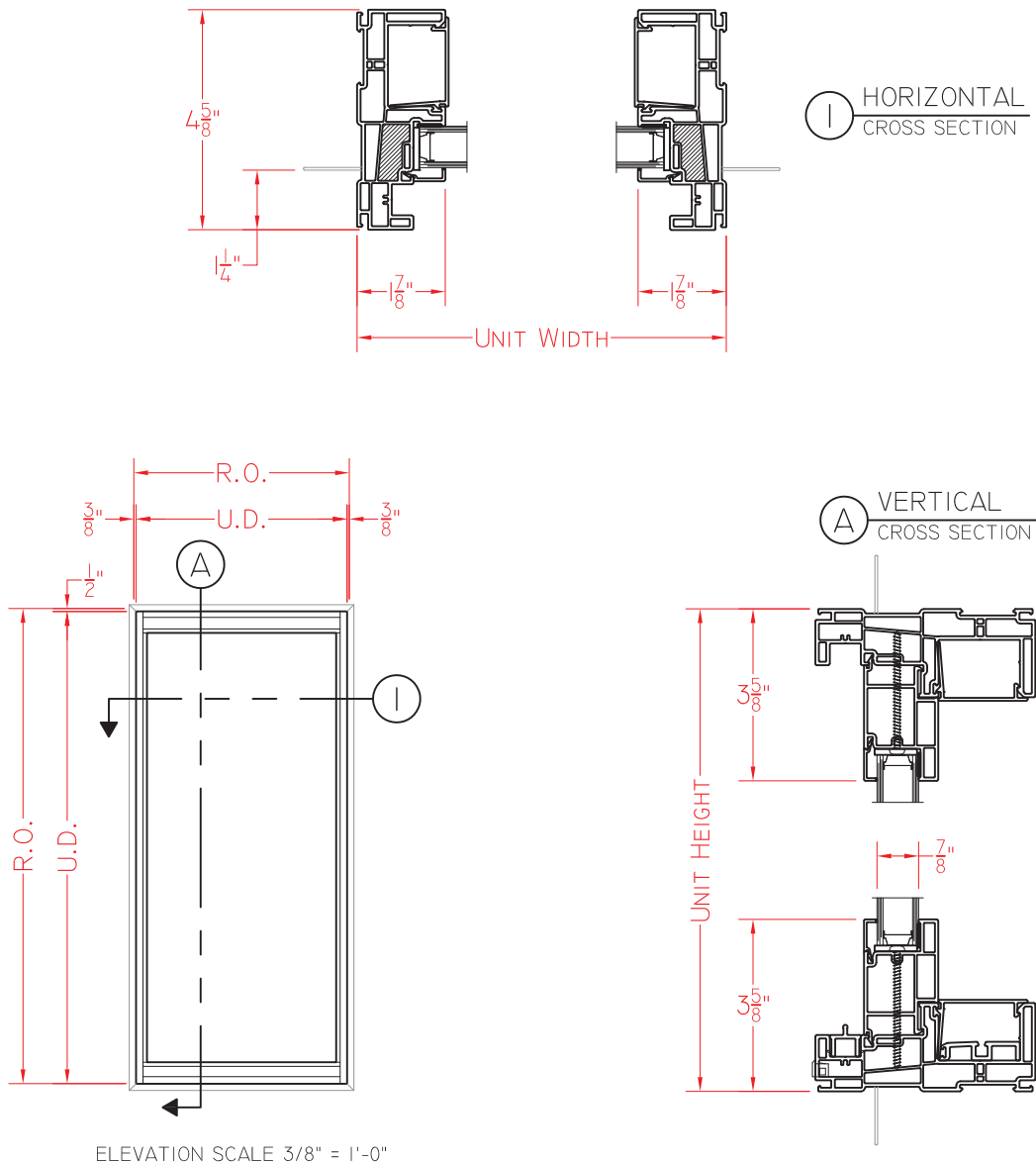




# V150 4 7/8" Frame Depth Sliding Door Sidelite

## V150 Series Sliding Door Fixed Sidelite

This document contains confidential and proprietary information intended for the private use of Quaker.  
© 2019 Quaker Window Products Co., Inc.. All rights reserved.  
Quaker reserves the right to change any/all designs without notice. Due to periodic re-certification requirements, result shown may vary.



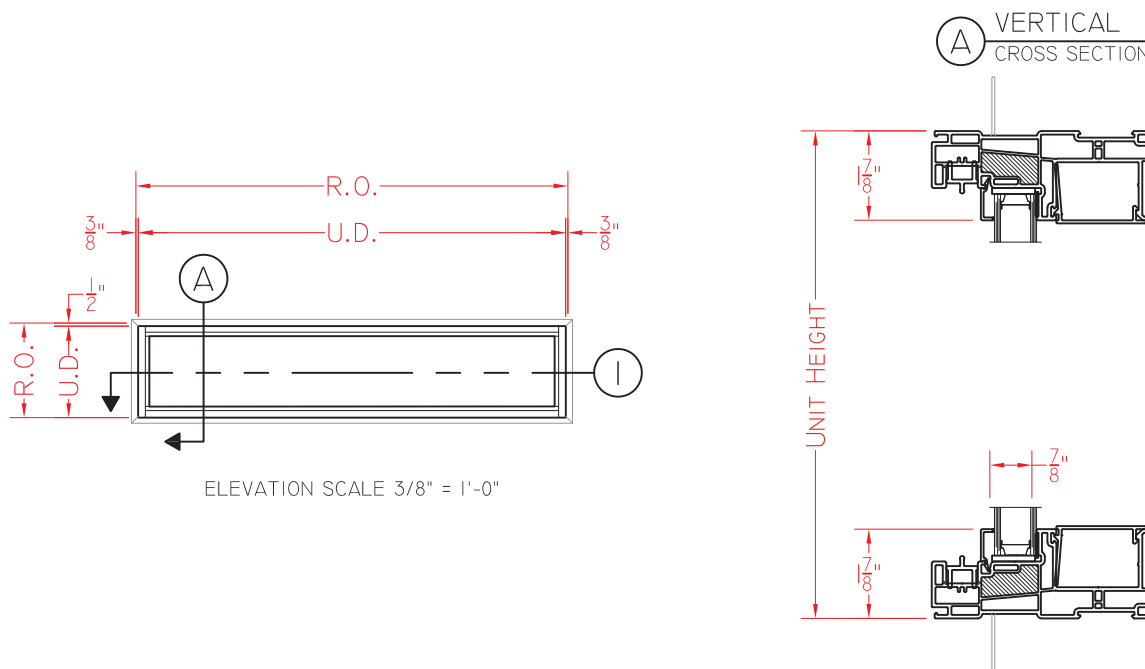
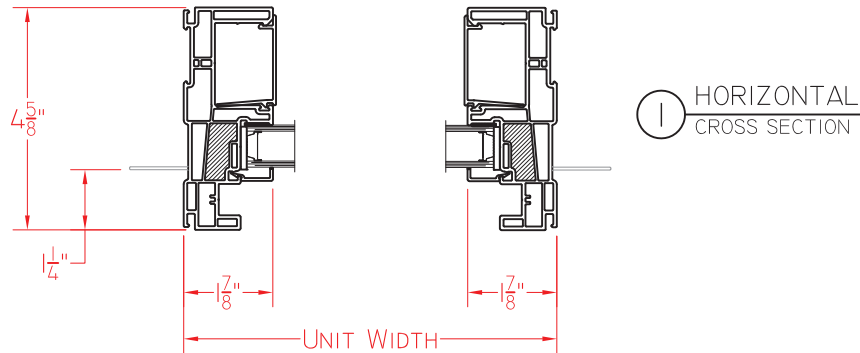
SCALE 1:4

Our products are tested to the standards of and certified by some of the foremost organizations in the fenestration industry.



## V150 Series Sliding Door Fixed Transom

This document contains confidential and proprietary information intended for the private use of Quaker.  
© 2019 Quaker Window Products Co., Inc.. All rights reserved.  
Quaker reserves the right to change any/all designs without notice. Due to periodic re-certification requirements, result shown may vary.



SCALE 1:4

Our products are tested to the standards of and certified by some of the foremost organizations in the fenestration industry.

