

V250 Series 3 1/4" Frame Depth Double Hung/Single Hung

V250 Series Double Hung/Single Hung

Features

- ◇ **Material**
 - uPVC Vinyl
- ◇ **Commercial Framing System**
 - 3 1/4" main frame
 - 0.060" wall thickness of frame, 0.070" wall thickness of sash
- ◇ **Enhanced Design**
 - Mitered and welded corners
- ◇ **Glazing**
 - 3/4" insulating glass
- ◇ **Hardware**
 - Block and tackle balancers
- ◇ **Screen**
 - Roll form aluminum screen frame with BetterVue™ mesh with WaterShed® technology
- ◇ **Colors**
 - White or Sandstone vinyl (interior/exterior)

Benefits

- ◇ The capacity to match exterior colors for unique project facades
- ◇ The ability to facilitate large sizes for taller and wider window openings

Performance

- ◇ Structural & Thermal (test reports or thermal simulations available upon request)

Model	Double Hung	Single Hung
Test Size	36" x 84"	36" x 84"
NAFS Rating	LC-50	
Structural Load P.S.F.	55	75
Air Infiltration (cfm/ft²)	<0.30	
Water (No Penetration) P.S.F.	5.25	up to 7.5
U-Value (ranges based on multiple Low-E/Argon combinations)	0.24-0.51	0.25-0.52
SHGC (ranges based on multiple Low-E/Argon combinations)	0.11-0.62	0.12-0.62

Due to periodic re-certification requirements, result shown may vary.

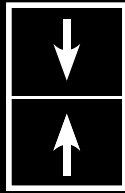
Options

- ◇ **Available Configurations**
 - Double Hung
 - Single Hung
 - Geometric shapes
- ◇ **Muntin Choices**
 - Internal or simulated divided lites available
- ◇ **Limited travel Hardware**
- ◇ **Nailing Fin**
- ◇ **Screen**
 - Roll form aluminum screen frame with aluminum wire mesh
 - Roll form aluminum screen frame with sunscreen mesh
 - Roll form aluminum screen frame with stainless steel 0.009" thickness mesh
- ◇ **Glazing**
 - Multiple Low-E and argon glazing choices
 - Triple glazing (Energy TG)
 - Capillary tubes
 - Wide variety of glazing, tinting and thickness options
- ◇ **Panning & Trim Choices**
 - Wide variety of panning, receptor and trim available
- ◇ **Mulling**
 - Wide variety of structural mulls
- ◇ **Colors**
 - High-performance Textured Black laminate (interior/exterior)
 - High-performance Textured Black, Textured Dark Bronze, Textured Dark Grey or Textured Resembles Clear Anodized laminate (exterior only with White vinyl interior)
 - Twelve painted exterior colors (with White or Sandstone vinyl interior)
 - Unlimited custom painted exterior colors

Double Hung Window Operating Force: 17 lbf (Initiate motion), 20 lbf (Maintain motion), <4 lbf (Latches)
Single Hung Window Operating Force: 15 lbf (Initiate motion), 18 lbf (Maintain motion), 3 lbf (Latches)

Our products are tested to the standards of and certified by some of the foremost organizations in the fenestration industry.

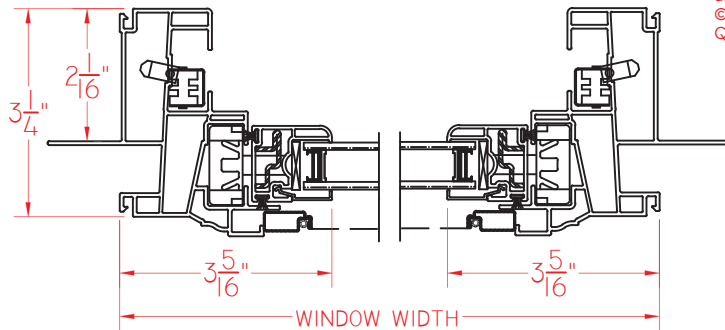




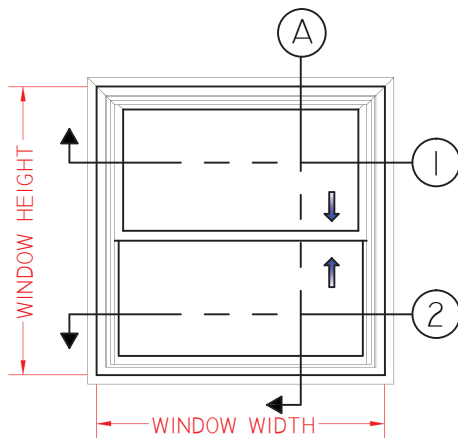
V250 Series 3 1/4" Frame Depth Double Hung/Single Hung

V250 Series Double Hung

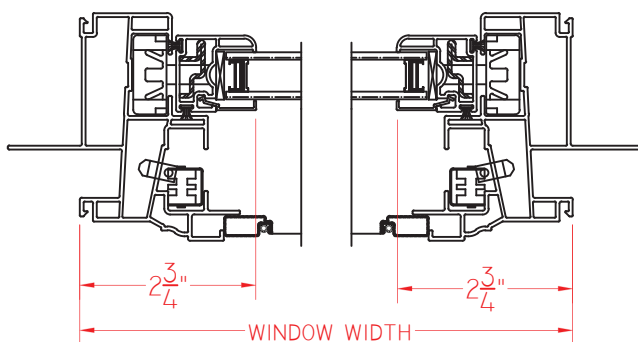
This document contains confidential and proprietary information intended for the private use of Quaker.
© 2016 Quaker Window Products Co., Inc. All rights reserved.
Quaker reserves the right to change any/all designs without notice.



① HORIZONTAL
CROSS SECTION

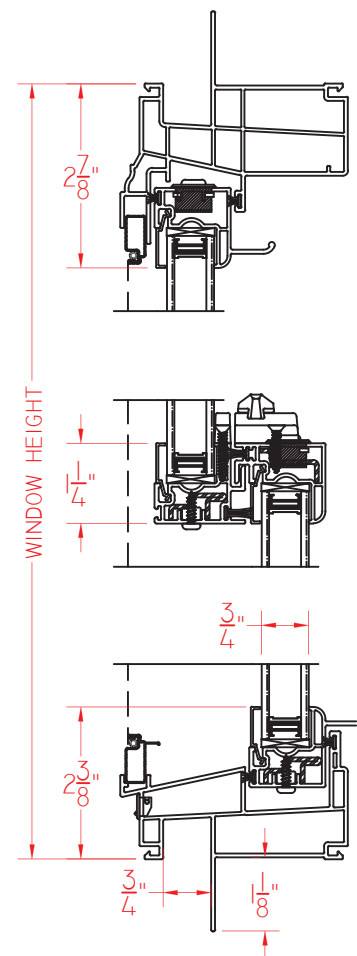


ELEVATION SCALE 1/2" = 1'-0"



② HORIZONTAL
CROSS SECTION

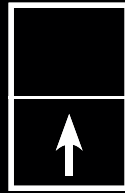
Ⓐ VERTICAL
CROSS SECTION



SCALE 1:3

Our products are tested to the standards of and certified by some of the foremost organizations in the fenestration industry.

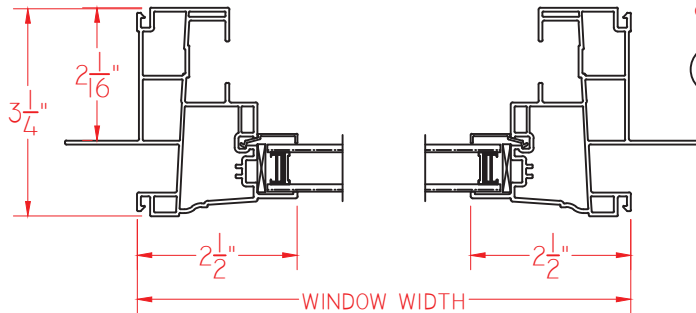




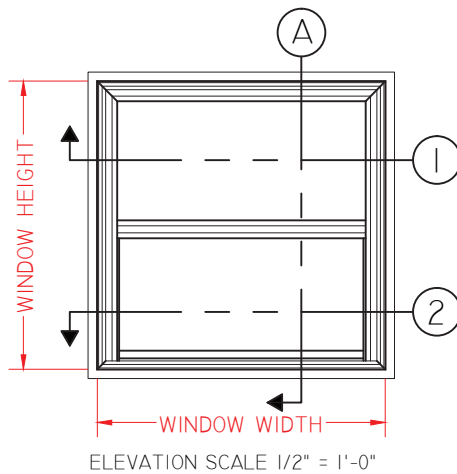
V250 Series 3 1/4" Frame Depth Double Hung/Single Hung

V250 Series Double Hung

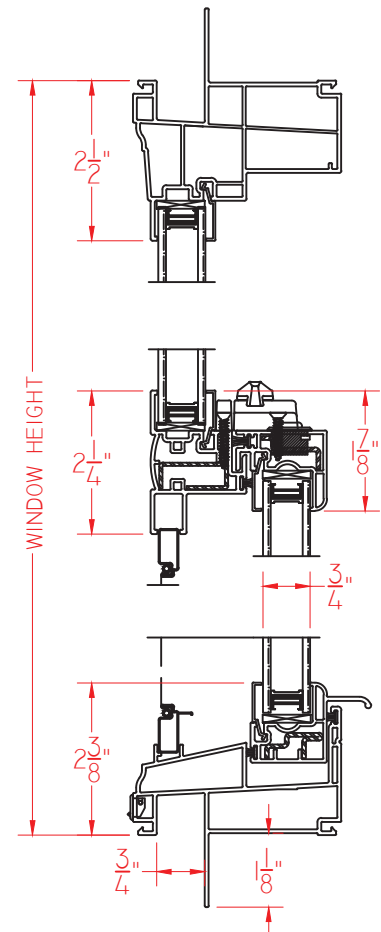
This document contains confidential and proprietary information intended for the private use of Quaker.
© 2016 Quaker Window Products Co., Inc. All rights reserved.
Quaker reserves the right to change any/all designs without notice.



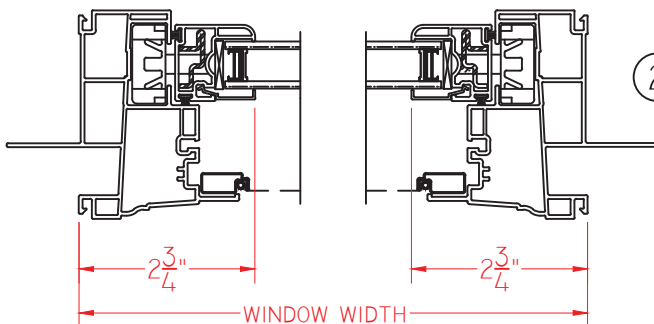
① HORIZONTAL
CROSS SECTION



Ⓐ VERTICAL
CROSS SECTION



② HORIZONTAL
CROSS SECTION



SCALE 1:3

Our products are tested to the standards of and certified by some of the foremost organizations in the fenestration industry.

