

## E500 Series 3 1/4" Frame Depth Double Hung/Single Hung

### E500 Series Double Hung/Single Hung

#### Features

- ◇ Material
  - Extruded Aluminum
- ◇ Commercial Framing System
  - 3 1/4" main frame
  - 0.062" wall thickness of frame and sash
- ◇ Thermally Enhanced Design
  - Azon pour and debridge thermal break is 1/2" wide in all main frame and vent rail extrusions
  - Double fin-type weatherstripping
  - Stainless steel pivot bars
  - Header expander
  - Sill angle
  - Full width lift handles
- ◇ Glazing
  - 1" insulating glass
- ◇ Hardware
  - Block and tackle balancers
  - Gravity latch
- ◇ Screen
  - Extruded aluminum screen frame with BetterVue™ mesh with WaterShed® technology

#### Benefits

- ◇ The capacity to match exterior colors for unique project facades
- ◇ The ability to facilitate large sizes for taller and wider window openings

#### Performance

- ◇ Structural & Thermal (test reports or thermal simulations available upon request)

Model	Double Hung/ Single Hung
NAFS Rating	AW-40
Test Size	60" x 99"
Structural Load P.S.F.	65
Air Infiltration (cfm/ft²)	<0.30
Water (No Penetration) P.S.F.	8.15
U-Value (ranges based on multiple Low-E/Argon combinations)	0.36–0.56
SHGC (ranges based on multiple Low-E/Argon combinations)	0.13–0.56

Due to periodic re-certification requirements, result shown may vary.

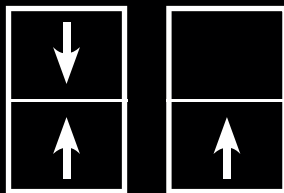
#### Options

- ◇ Available Configurations
  - Double hung
  - Single hung
  - Oriel single hung
- ◇ Muntin Choices
  - Internal or simulated divided lites available
- ◇ Hardware
  - Class 5 balancers
  - Dual self-aligning sweep locks
  - Limited travel latch
  - Wide variety of locking and operating hardware options
- ◇ Nailing Fin
- ◇ Screen
  - Extruded aluminum screen frame with aluminum wire mesh
  - Extruded aluminum screen frame with sunscreen mesh
  - Extruded aluminum screen frame with stainless steel 0.009" thickness mesh
  - Security screen
- ◇ Glazing
  - Multiple Low-E and argon glazing choices
  - Capillary tubes
  - Wide variety of glazing, tinting and thickness options
- ◇ Panning & Trim Choices
  - Wide variety of panning, receptor and trim available
- ◇ Mulling
  - Wide variety of structural mulls
- ◇ Specialty
  - Attached exterior or interior storm window
  - Extension jambs

Operating Force: 25 lbf (maintain motion), 11 lbf (latches)

Our products are tested to the standards of and certified by some of the foremost organizations in the fenestration industry.

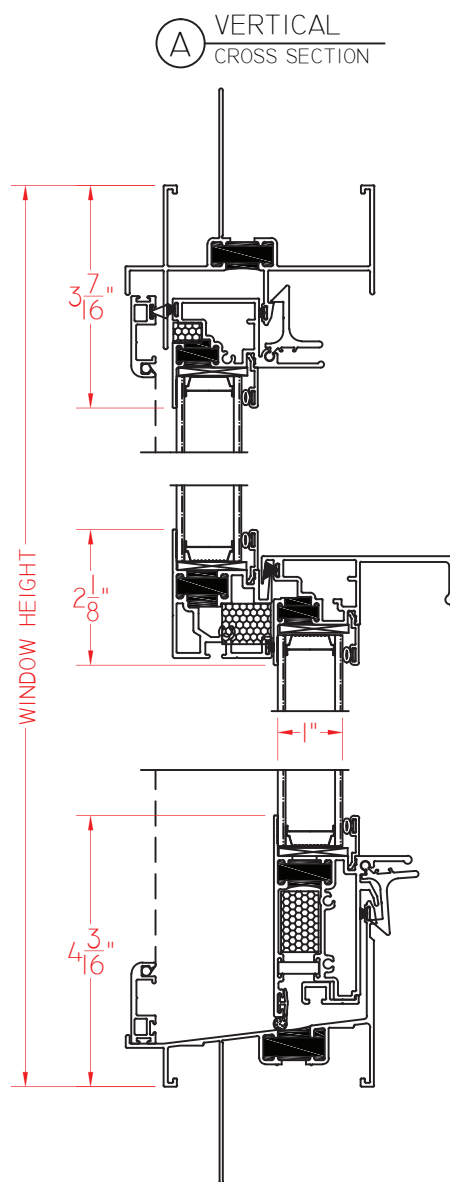
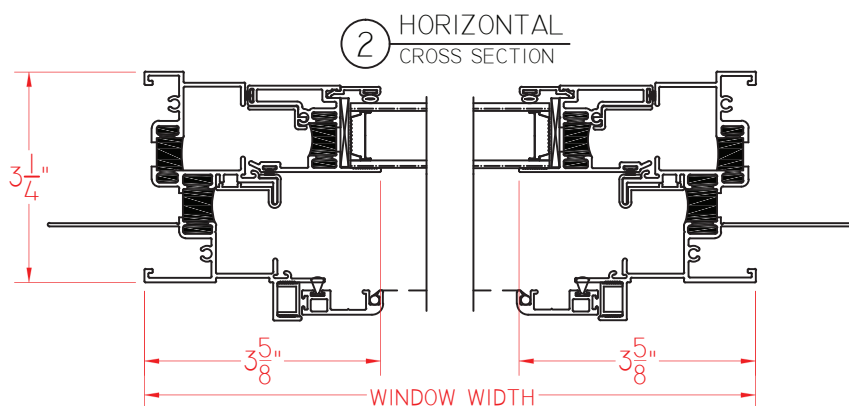
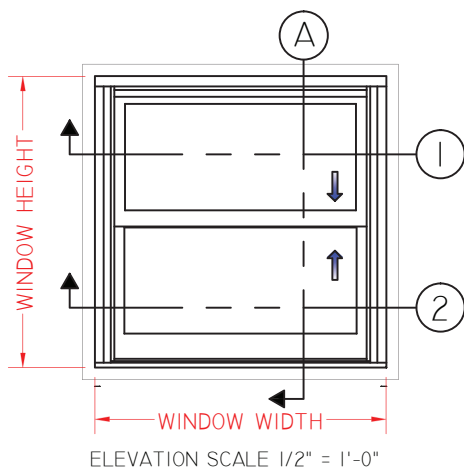
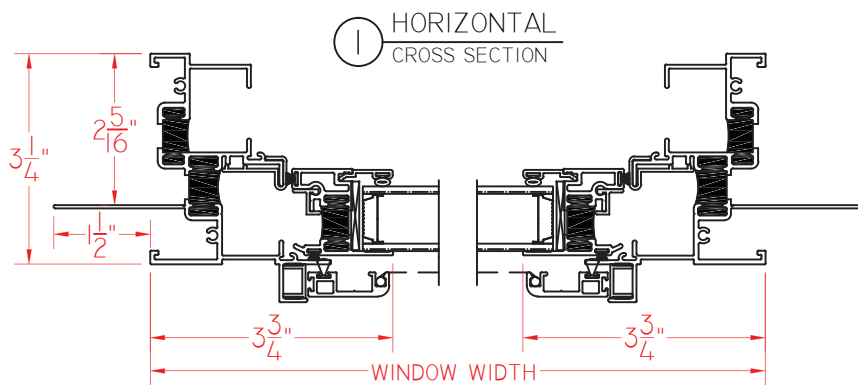




# E500 Series 3 1/4" Frame Depth Double Hung/Single Hung

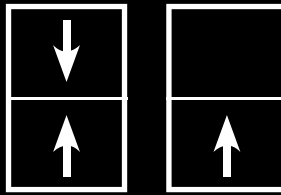
## E500 Series Double Hung/Single Hung with Nailing Fin

This document contains confidential and proprietary information intended for the private use of Quaker.  
© 2016 Quaker Window Products Co., Inc. All rights reserved.  
Quaker reserves the right to change any/all designs without notice.



Our products are tested to the standards of and certified by some of the foremost organizations in the fenestration industry.

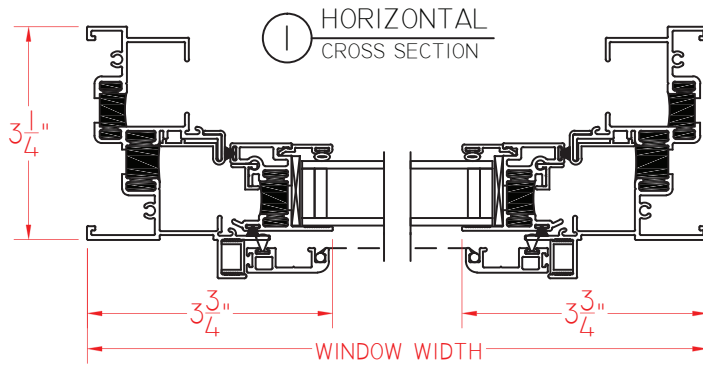




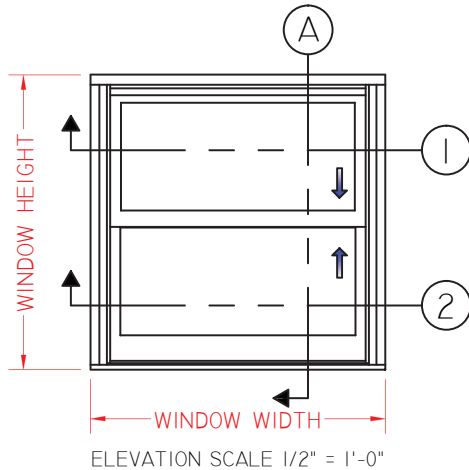
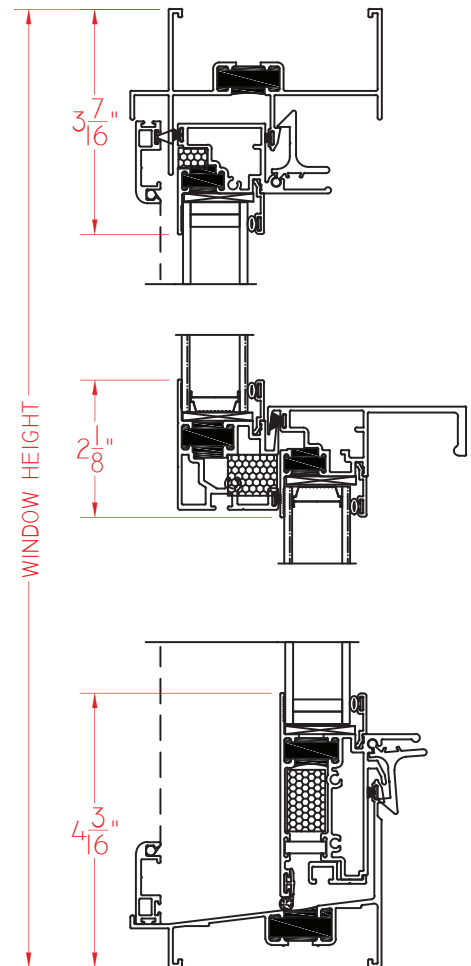
## E500 Series 3 1/4" Frame Depth Double Hung/Single Hung

### E500 Series Double Hung/Single Hung without Nailing Fin

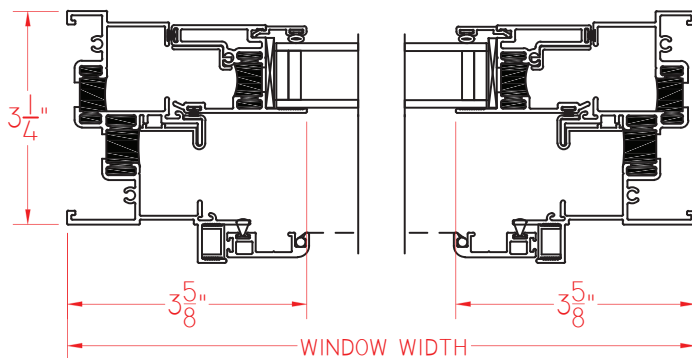
This document contains confidential and proprietary information intended for the private use of Quaker.  
© 2016 Quaker Window Products Co., Inc. All rights reserved.  
Quaker reserves the right to change any/all designs without notice.



Ⓐ VERTICAL  
CROSS SECTION



Ⓐ HORIZONTAL  
CROSS SECTION



Our products are tested to the standards of and certified by some of the foremost organizations in the fenestration industry.

