

## V150 Series 2 3/4" Frame Depth Single Hung

### V150 Series Single Hung

#### Features

- ◇ **Material**
  - uPVC Vinyl
- ◇ **Framing System**
  - 2 3/4" main frame
- ◇ **Enhanced Design**
  - Mitered and welded corners
  - Integral Nailing Fin
- ◇ **Glazing**
  - 3/4" insulating glass
- ◇ **Hardware**
  - Block and tackle balancers
- ◇ **Screen**
  - Half screen
  - Extruded aluminum frame with BetterVue™ mesh with WaterShed® technology
- ◇ **Colors**
  - White and Sandstone vinyl (interior/exterior)

#### Benefits

- ◇ Perfect value-engineered product for commercial projects 3-stories and less
- ◇ Integral Nail Fin system allows the V150 Series to adapt to any project's build

#### Performance

- ◇ Structural & Thermal (test reports and thermal simulations available upon request)

Model	Single Hung
NAFS Rating	R-40
Test Size	40" x 63"
Design Pressure (P.S.F.)	40
Air Infiltration (cfm/ft <sup>2</sup> )	<0.30
Water Resistance (P.S.F.)	6
CR (Condensation Resistance) (with EnergyBasic or Energy 3S glass package)	37-60
U-Value (with EnergyBasic or Energy 3S glass package)	.24-.40
SHGC (with EnergyBasic or Energy 3S glass package)	.14-.34

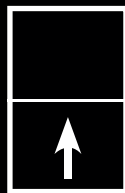
Due to periodic re-certification requirements, result shown may vary.

#### Options

- ◇ **Available Configurations**
  - Single Hung
- ◇ **Muntin Choices**
  - 5/8" Internal lites available
- ◇ **Nailing Fin**
- ◇ **J-Channel Snap-on Trim**
- ◇ **Screen**
  - Available without screen
- ◇ **Glazing**
  - EnergyBasic Low-E Glass by Quaker
  - Energy 3S Low-E glass by Quaker
  - Capillary tubes
- ◇ **Mulling**
  - Choose from standard zero mull or 1/2" structural mull
- ◇ **Colors**
  - High-performance Textured Black or Textured Dark Bronze laminate (exterior only with White vinyl interior)
  - Limitations on availability may apply

Our products are tested to the standards of and certified by some of the foremost organizations in the fenestration industry.

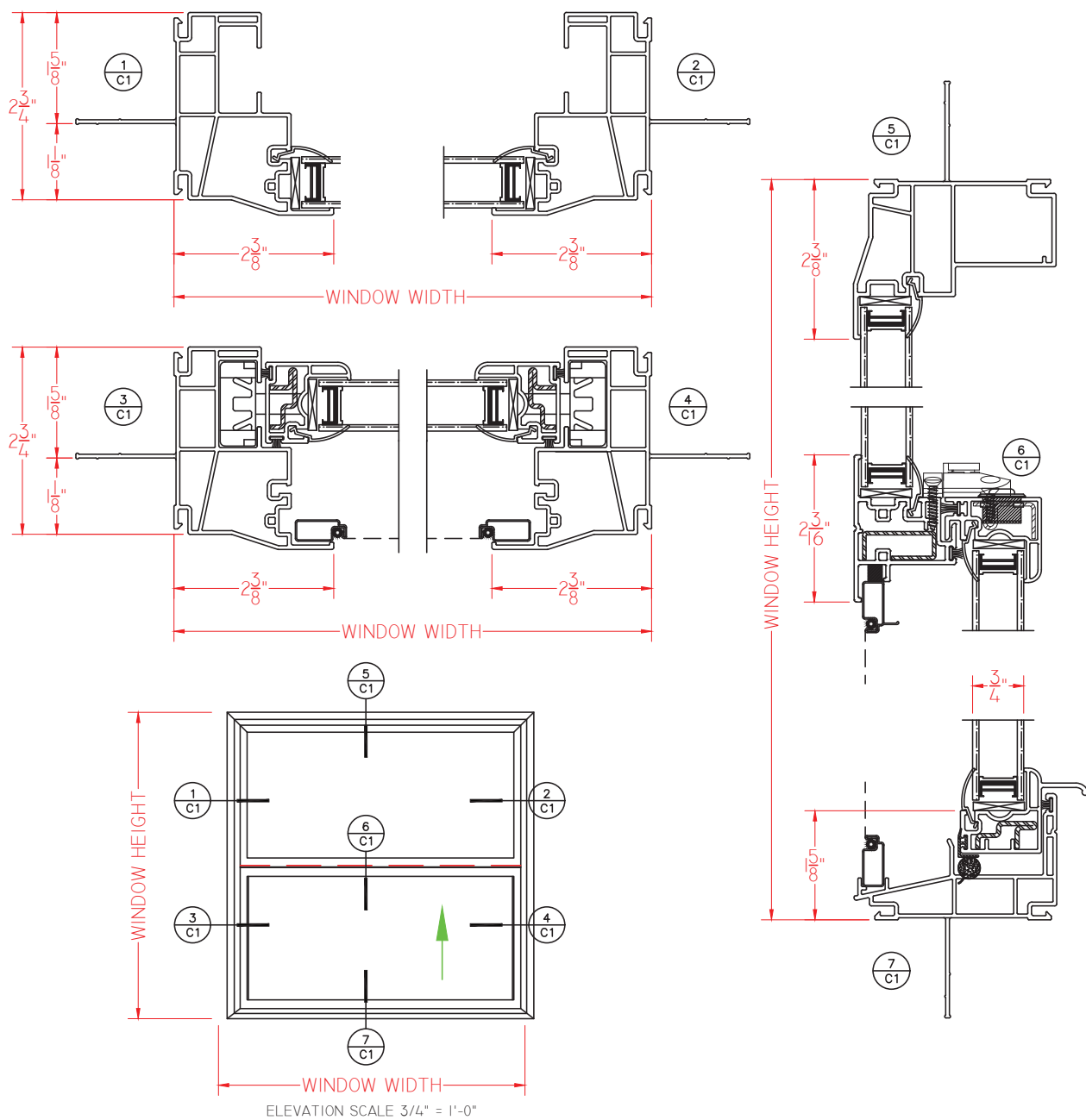




# V150 Series 2 3/4" Frame Depth Single Hung

## V150 Series Single Hung

This document contains confidential and proprietary information intended for the private use of Quaker.  
© 2019 Quaker Window Products Co., Inc. All rights reserved.  
Quaker reserves the right to change any/all designs without notice.



SCALE 6"=1'-0"

Our products are tested to the standards of and certified by some of the foremost organizations in the fenestration industry.

