

T600 Series 3 1/4" Frame Depth Casement (Project-Out)

T600 Series Casement (Project-Out)

Features

- ◇ Commercial Framing System
 - 3 1/4" main frame
 - 0.094" wall thickness of interior and exterior walls, 0.078" wall thickness elsewhere
- ◇ Thermally Enhanced Design
 - Azon pour and debridge thermal break is 1/2" wide in all main frame and vent rail extrusions
 - Heavy duty Monticelli cast aluminum corner keys
 - Mitered and pressure sealed internally with injected silicone through corner key passages.
 - Wrap-around marine glazing
- ◇ Glazing
 - 1" insulating glass
- ◇ Hardware
 - Butt hinges, 4-Bar hinges and Euro hinges available on both project-out and project-in models
 - Heavy-commercial Truth Contour™ locking system (Crank-out model only)
 - Heavy-commercial Truth Contour™ multipoint lock with push handle (no crank hardware)
 - Low profile cam handle (Push-out and Pull-in models only)
 - Pole Operated handle (Push-out and Pull-in models only)
 - Custodial lock (Pull-in model only)
 - Custodial lock with removable handle (Push-out model only)
- ◇ Screen
 - Wicket screet (Push-out model only)
 - Extruded aluminum screen frame with BetterVue™ mesh (Crank-out model only)
- ◇ Meets ADA Requirements (ADA Handle Required, Crank-out model only)

Options

- ◇ Available Configurations
 - Project-out and Project-in casement
 - Push-out, Crank-out or Pull-in
 - Continuous frame capabilities
- ◇ Muntin Choices
 - Internal or simulated divided lites available
- ◇ Limited Travel Hardware
- ◇ Screen
 - Extruded aluminum screen frame with aluminum wire mesh
 - Extruded aluminum screen frame with sunscreen mesh
 - Extruded aluminum screen frame with stainless steel 0.009" thickness mesh
- ◇ Glazing
 - Multiple Low-E and argon glazing choices
 - Capillary tubes
 - Optional glazing stop to accept 1 3/8" (triple) glazing
 - Wide variety of glazing, tinting and thickness options
- ◇ Panning & Trim Choices
 - Wide variety of panning, receptor and trim available
- ◇ Mulling
 - Wide variety of structural mulls

Benefits

- ◇ The capacity to match exterior colors for unique project facades
- ◇ The ability to facilitate large sizes for taller and wider window openings

Performance

- ◇ Structural & Thermal (test reports or thermal simulations available upon request)

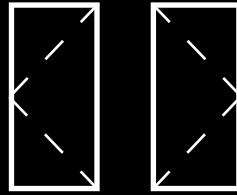
| Model | Casement (Project-Out) | Casement (Project-In) |
|---|------------------------|-----------------------|
| Test Size | 36" x 60" | |
| NAFS Rating | AW-70 | |
| Structural Load P.S.F. | 105 | |
| Air Infiltration (cfm/ft ²) | <0.10 | |
| Water (No Penetration) P.S.F. | up to 12 | |
| U-Value (ranges based on multiple Low-E/Argon combinations) | 0.27-0.58 | 0.43-0.60 |
| SHGC (ranges based on multiple Low-E/Argon combinations) | 0.09-0.49 | 0.12-0.49 |

Operating Force: 9 lbf (project-out casement), 14 lbf (project-in casement), 3 lbf (ADA Handle maintain motion), 3 lbf (ADA Handle lock)

Due to periodic re-certification requirements, result shown may vary.

Our products are tested to the standards of and certified by some of the foremost organizations in the fenestration industry.



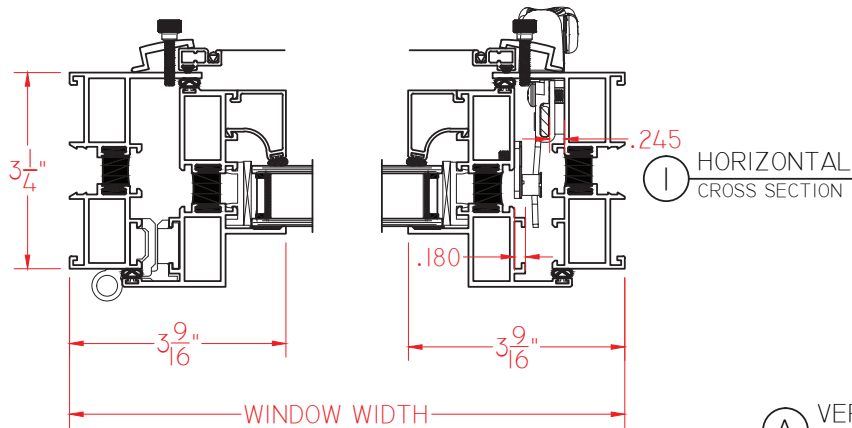


T600 Series 3 1/4" Frame Depth Casement (Project-Out)

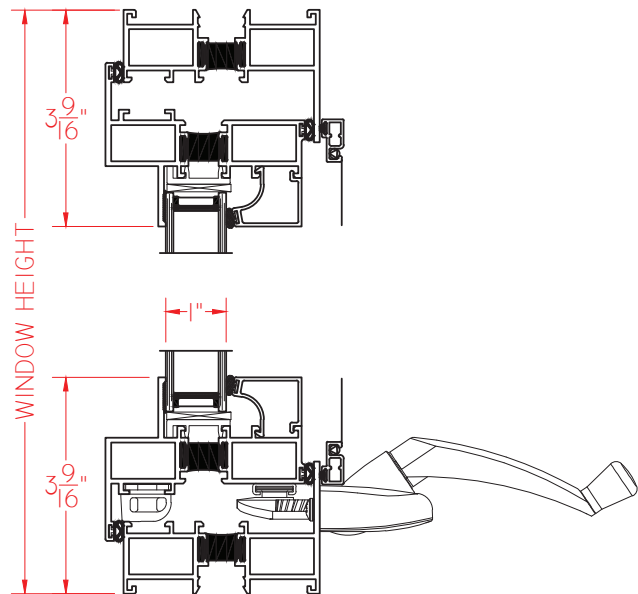
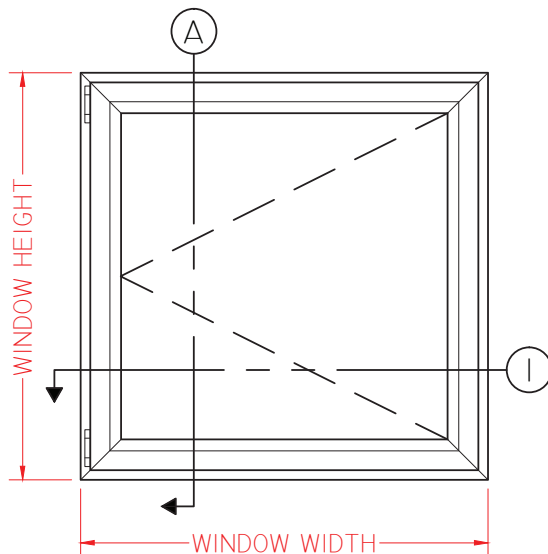
Shown with
Roto Hardware

T600 Series Casement (Project-Out)

This document contains confidential and proprietary information intended for the private use of Quaker.
© 2016 Quaker Window Products Co., All rights reserved.
Quaker reserves the right to change any/all designs without notice.



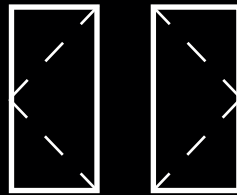
A VERTICAL
CROSS SECTION



SCALE 1:3

Our products are tested to the standards of and certified by some of the foremost organizations in the fenestration industry.



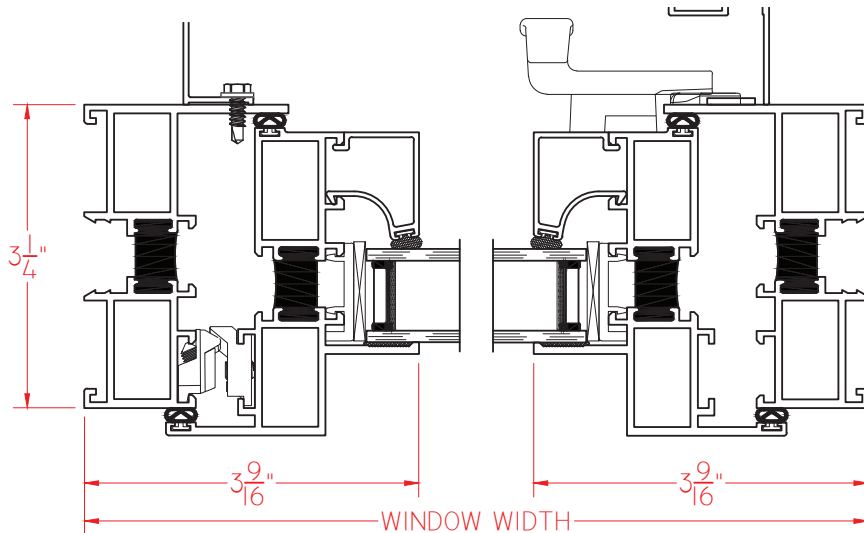


T600 Series 3 1/4" Frame Depth Casement (Project-Out)

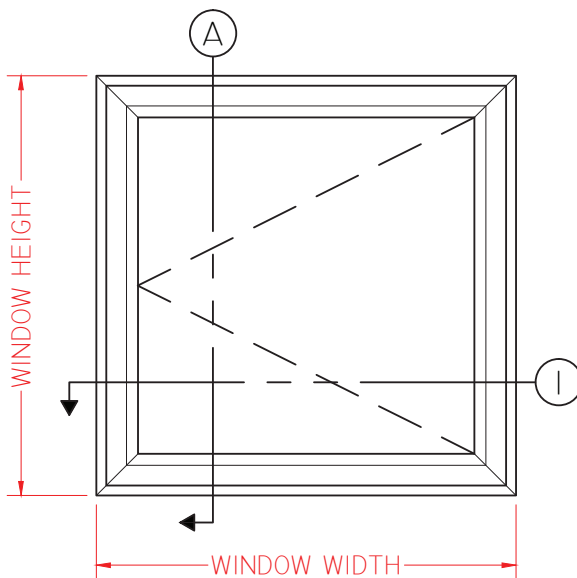
Shown with
Push-Out Hardware

T600 Series Casement (Project-Out)

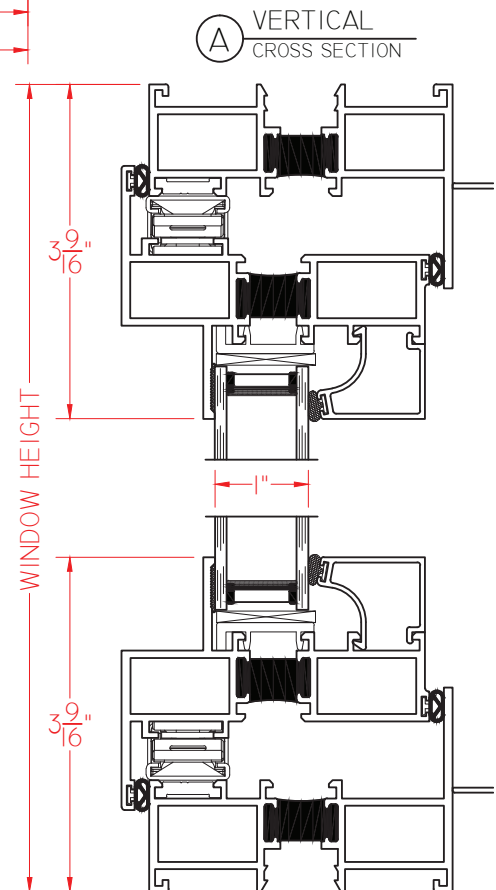
This document contains confidential and proprietary information intended for the private use of Quaker.
© 2016 Quaker Window Products Co., All rights reserved.
Quaker reserves the right to change any/all designs without notice.



① HORIZONTAL
CROSS SECTION



ELEVATION SCALE 3/4" = 1'-0"

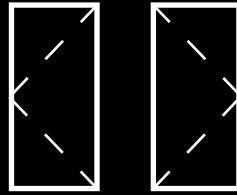


Ⓐ VERTICAL
CROSS SECTION

SCALE 1:2

Our products are tested to the standards of and certified by some of the foremost organizations in the fenestration industry.



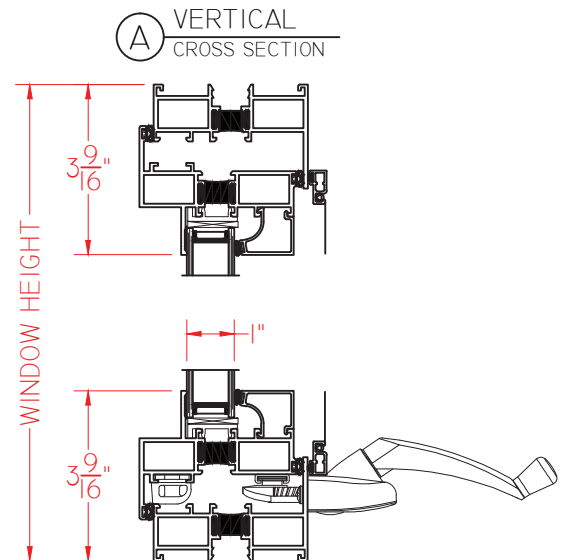
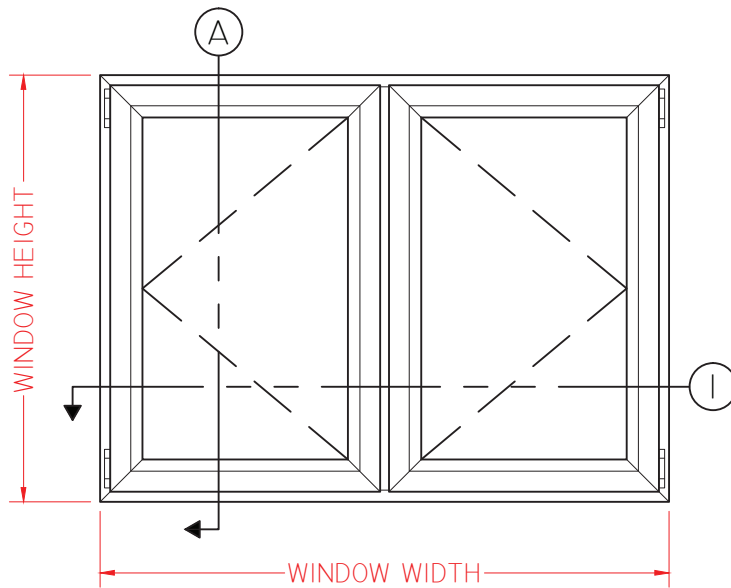
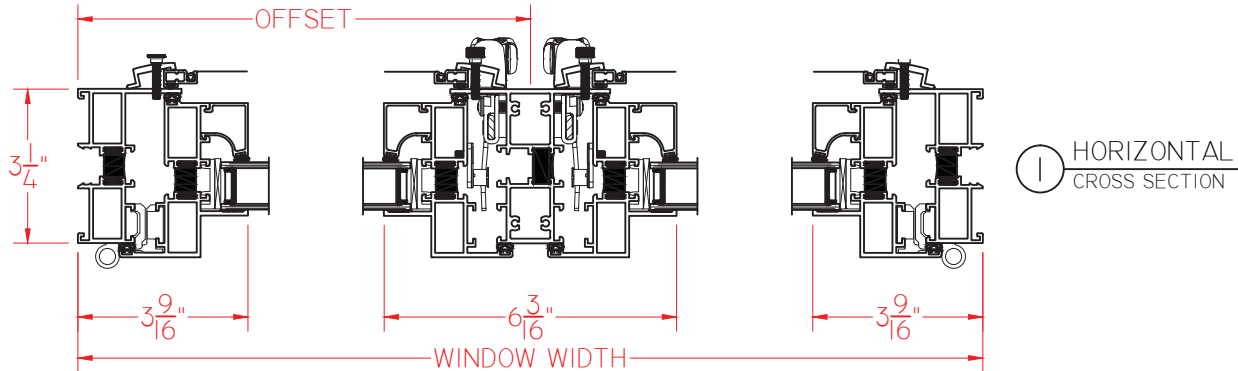


T600 Series 3 1/4" Frame Depth Casement (Project-Out)

Shown with
Roto Hardware

T600 Series Casement/Casement (Project-Out)

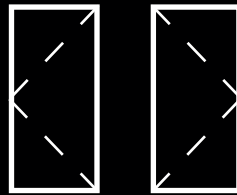
This document contains confidential and proprietary information intended for the private use of Quaker.
© 2016 Quaker Window Products Co., All rights reserved.
Quaker reserves the right to change any/all designs without notice.



SCALE 1:4

Our products are tested to the standards of and certified by some of the foremost organizations in the fenestration industry.



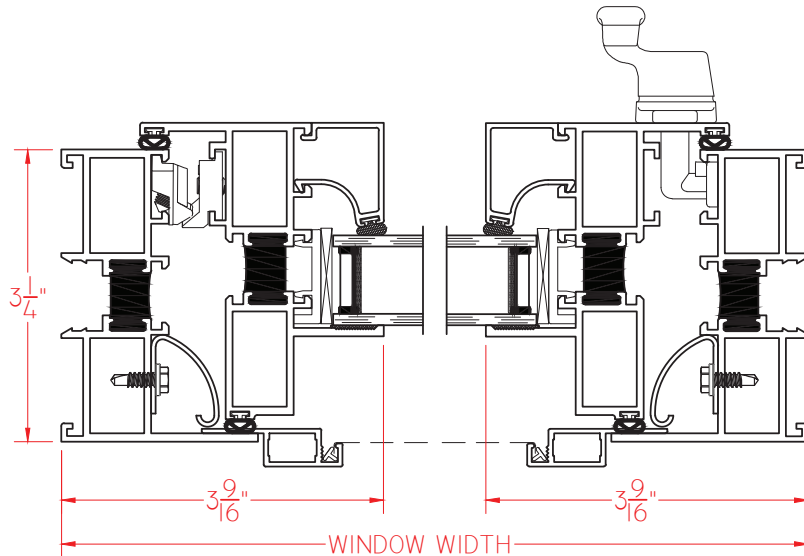


T600 Series 3 1/4" Frame Depth Casement (Project-In)

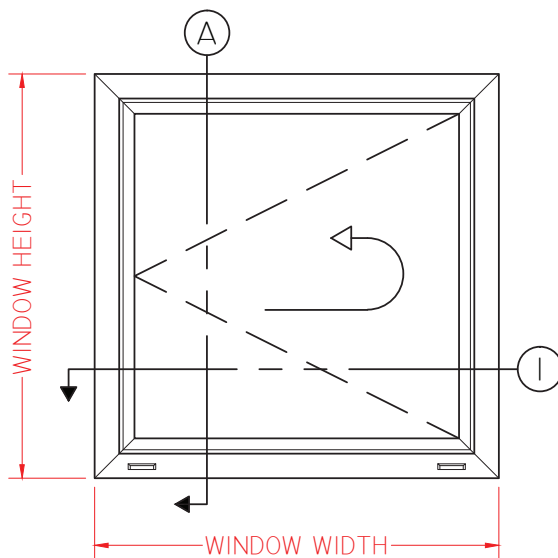
Shown with Cam
Handle Pull-In
Hardware

T600 Series Casement (Project-In)

This document contains confidential and proprietary information intended for the private use of Quaker.
© 2016 Quaker Window Products Co., All rights reserved.
Quaker reserves the right to change any/all designs without notice.

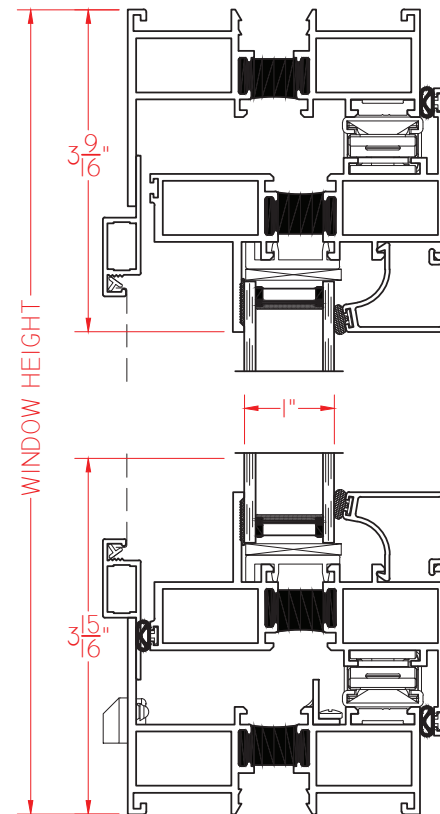


① HORIZONTAL
CROSS SECTION



ELEVATION SCALE 3/4" = 1'-0"

Ⓐ VERTICAL
CROSS SECTION



SCALE 1:2

Our products are tested to the standards of and certified by some of the foremost organizations in the fenestration industry.

