

## K200 Series 2 3/8" Frame Depth Double Hung/Single Hung

### K200 Series Double Hung/Single Hung

#### Features

- ◇ Material
  - Extruded Aluminum
- ◇ Commercial Framing System
  - 2 3/8" main frame
  - 0.062" wall thickness of frame and sash
- ◇ Thermally Enhanced Design
  - Azon pour and debridge thermal break is 1/2" wide in all main frame and vent rail extrusions
  - Full width lift handles
- ◇ Glazing
  - 3/4" insulating glass
- ◇ Hardware
  - Block and tackle balancers
  - Sweep locks
- ◇ Screen
  - Extruded aluminum screen frame with BetterVue™ mesh with WaterShed® technology

#### Benefits

- ◇ The capacity to match exterior colors for unique project facades
- ◇ The ability to facilitate large sizes for taller and wider window openings

#### Performance

- ◇ Structural & Thermal (test reports or thermal simulations available upon request)

Model	Double Hung/ Single Hung
NAFS Rating	C50
Test Size	56" x 91"
Structural Load P.S.F.	75
Air Infiltration (cfm/ft²)	<0.30
Water (No Penetration) P.S.F.	7.5
U-Value (ranges based on multiple Low-E/Argon combinations)	0.38 - 0.64
SHGC (ranges based on multiple Low-E/Argon combinations)	0.14 - 0.60

Due to periodic re-certification requirements, result shown may vary.

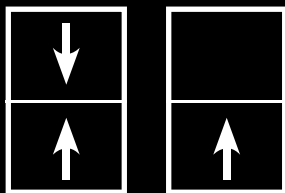
#### Options

- ◇ Available Configurations
  - Double hung
  - Single hung
  - Oriel single hung
- ◇ Muntin Choices
  - Internal or simulated divided lites available
- ◇ Limited Travel Latch
- ◇ Nailing Fin
- ◇ Screen
  - Extruded aluminum screen frame with aluminum wire mesh
  - Extruded aluminum screen frame with sunscreen mesh
  - Extruded aluminum screen frame with stainless steel 0.009" thickness mesh
  - Security screen
- ◇ Glazing
  - Multiple Low-E and argon glazing choices
  - Capillary tubes
  - Wide variety of glazing, tinting and thickness options
- ◇ Panning & Trim Choices
  - Wide variety of panning, receptor and trim available
- ◇ Mulling
  - Wide variety of structural mulls
- ◇ Specialty
  - Attached exterior or interior storm window
  - Extension jambs

Operating Force: 22 lbf

Our products are tested to the standards of and certified by some of the foremost organizations in the fenestration industry.

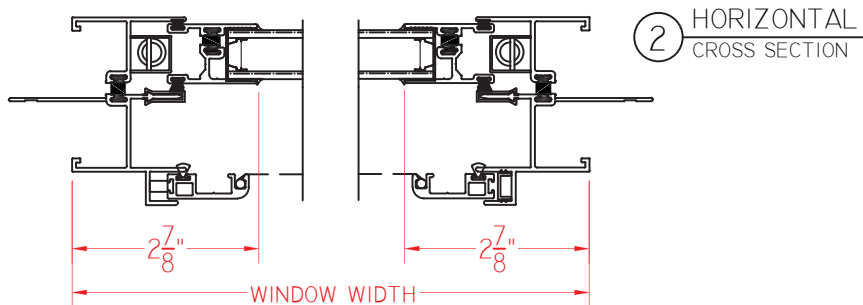
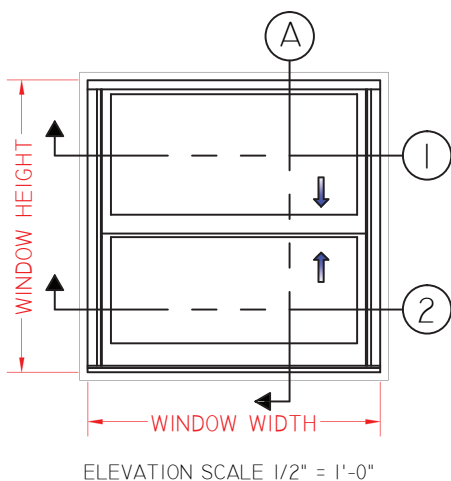
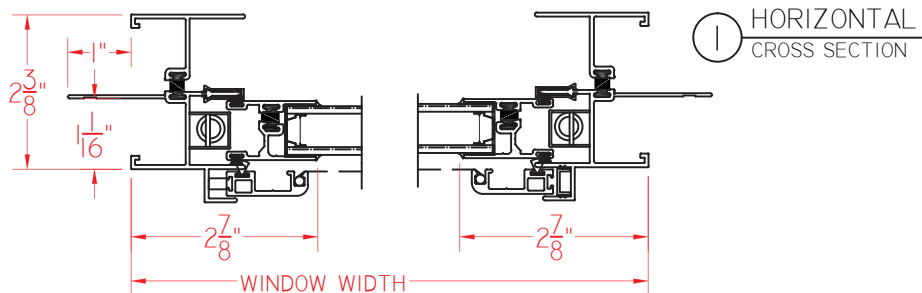




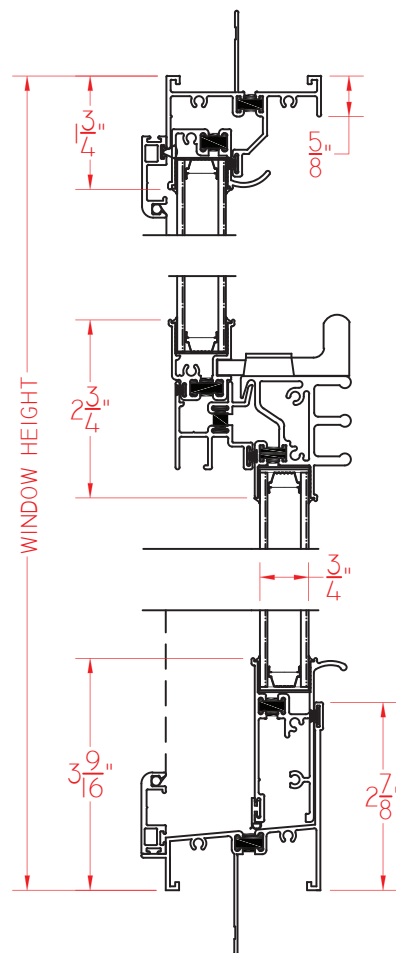
# K200 Series 2 3/8" Frame Depth Double Hung/Single Hung

## K200 Series Double Hung/Single Hung

This document contains confidential and proprietary information intended for the private use of Quaker. © 2016 Quaker Window Products Co., Inc. All rights reserved. Quaker reserves the right to change any/all designs without notice.



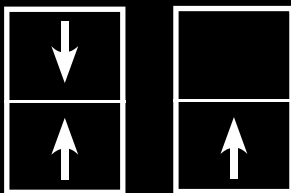
Ⓐ VERTICAL CROSS SECTION



SCALE 1:3

Our products are tested to the standards of and certified by some of the foremost organizations in the fenestration industry.

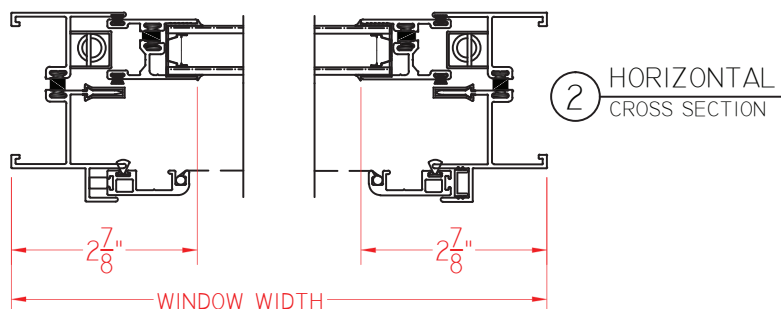
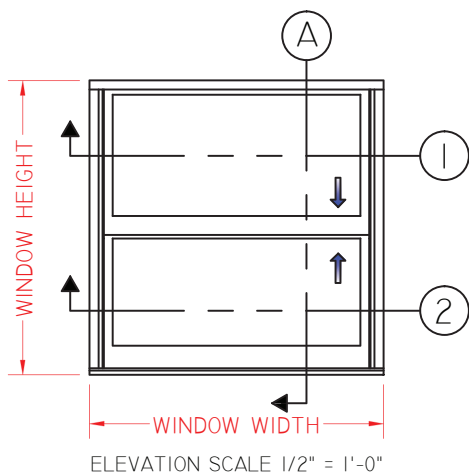
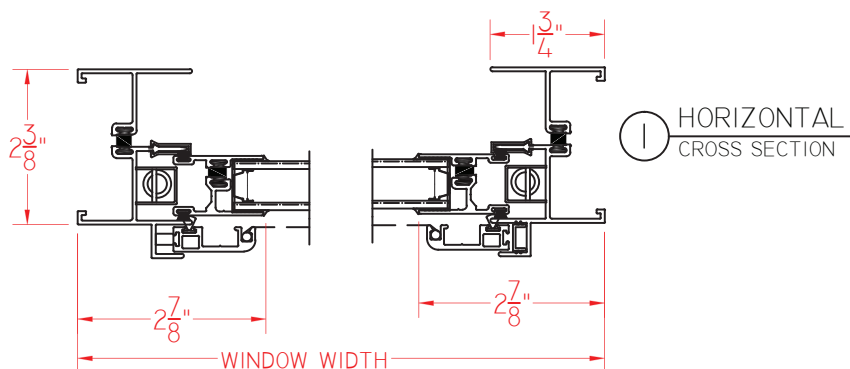




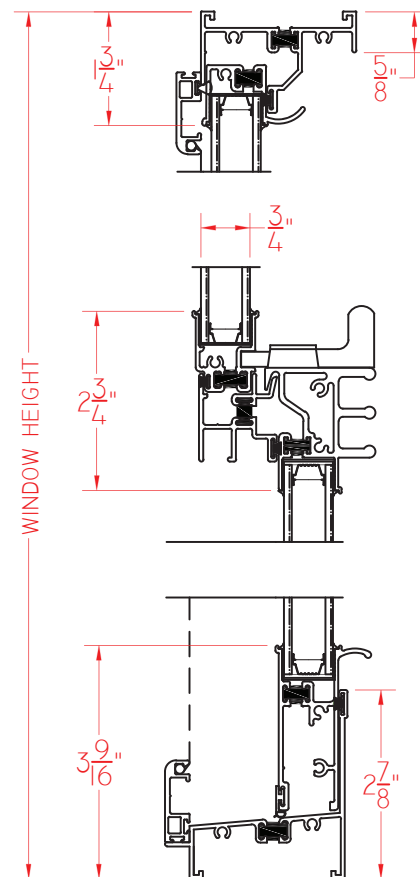
# K200 Series 2 3/8" Frame Depth Double Hung/Single Hung

## K200 Series Double Hung/Single Hung

This document contains confidential and proprietary information intended for the private use of Quaker.  
© 2016 Quaker Window Products Co., Inc. All rights reserved.  
Quaker reserves the right to change any/all designs without notice.



### ③ VERTICAL CROSS SECTION



SCALE 1:3

Our products are tested to the standards of and certified by some of the foremost organizations in the fenestration industry.

