

## B500 Series 3 1/4" Frame Depth Single Hung

### B500 Series Single Hung

#### Features

- ◇ **Commercial Framing System**
  - 3 1/4" main frame
  - 0.062" wall thickness of frame and sash
- ◇ **Thermally Enhanced Design**
  - Azon pour and debridge thermal break is 1/2" wide in all main frame and operating rail extrusions
  - Double fin-type weatherstripping
  - Full width lift handles
- ◇ **Glazing**
  - 1" Insulating glass
- ◇ **Hardware**
  - Block and tackle balancers
  - Gravity latch
- ◇ **Screen**
  - Half screen of extruded aluminum screen frame containing BetterVue™ mesh with Watershed® technology

#### Benefits

- ◇ Specifically designed to meet ASTM F1642-04 (Standard Test Method for Glazing and Glazing System Subject to Airblast Loadings) resulting in a high GSA/ISC Performance Condition
- ◇ The capacity to match exterior colors for unique project facades
- ◇ The ability to facilitate large sizes for taller and wider window openings

#### Performance

- ◇ Structural & Blast (test reports available upon request)

Model	Single Hung
Test Size	60" x 90"
NAFS Rating	AW-PG50
Structural Load P.S.F.	75
Air Infiltration (cfm/ft²)	<0.30
Water (No Penetration) P.S.F.	10
Missile Level	D

Operating Force:  
19 lbf (maintain motion),  
1 lbf (gravity latches)

Due to periodic re-certification requirements, result shown may vary.

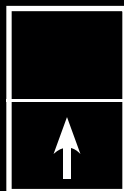
- ◇ Blast Calculations Available for Project Specific Conditions

#### Options

- ◇ **Available Configurations**
  - Single hung
  - Oriel single hung
- ◇ **Muntin Choices**
  - Internal or simulated divided lites available
- ◇ **Hardware**
  - Class 5 balancers
  - Limited travel latch
- ◇ **Nailing Fin**
- ◇ **Screen**
  - Extruded aluminum screen frame with aluminum wire mesh
  - Extruded aluminum screen frame with sunscreen mesh
  - Extruded aluminum screen frame with stainless steel 0.009" thickness mesh
- ◇ **Glazing**
  - Multiple Low-E and argon glazing choices
  - Capillary tubes
  - Wide variety of glazing, tinting and thickness options
- ◇ **Panning & Trim Choices**
  - Wide variety of panning, receptor and Blast snap trim available

Our products are tested to the standards of and certified by some of the foremost organizations in the fenestration industry.

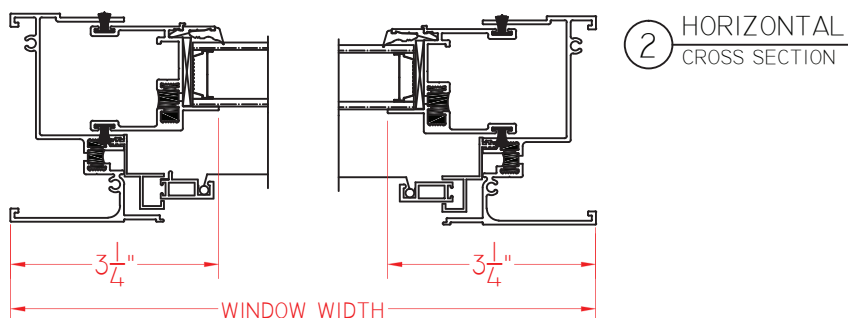
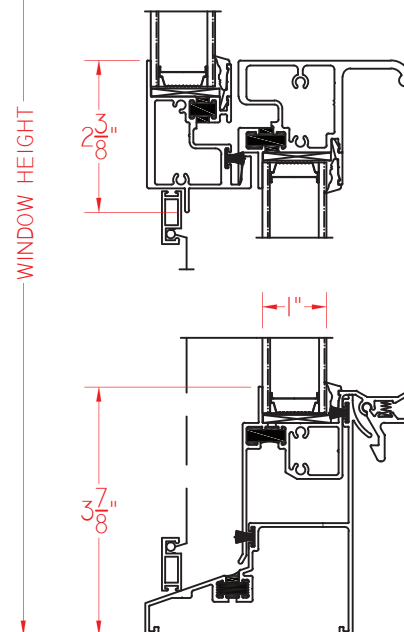
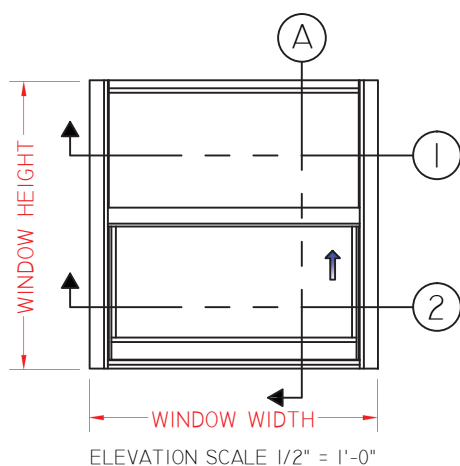
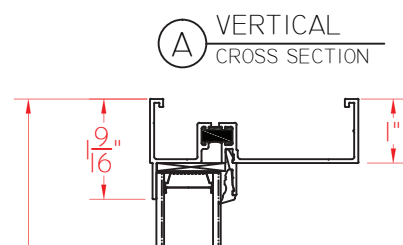
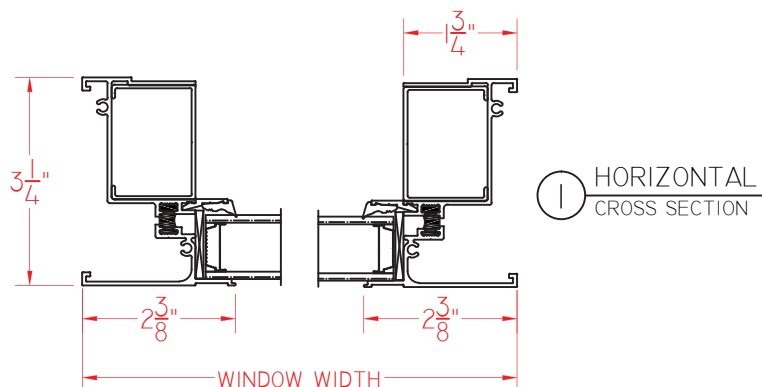




## B500 Series 3 1/4" Frame Depth Single Hung

### B500 Series Single Hung

This document contains confidential and proprietary information intended for the private use of Quaker.  
© 2016 Quaker Window Products Co., Inc. All rights reserved.  
Quaker reserves the right to change any/all designs without notice.



SCALE 1:3

Our products are tested to the standards of and certified by some of the foremost organizations in the fenestration industry.

