

C600/C605 Series With Blinds/Storm Panel 4 1/8" Frame Depth Casement (Project-Out)

WITH BLINDS/
STORM PANEL

C600/C605 Series Casement (Project-Out)

Features

- ◇ **Material**
 - Extruded Aluminum
- ◇ **Framing System**
 - Patented OptiCore Technology
 - Architectural grade aluminum frame
 - Dual Euro-Groove frame system
- ◇ **Enhanced Design**
 - Azo-Core Thermal Barrier System for reduced thermal-conductivity and increased energy-efficiency
 - Modern, squared frame glazing
 - 2 3/8" narrow sitelines
 - Blinds/Storm Panel applied to interior
 - With or without Integral Nailing Fin
- ◇ **Glazing**
 - 1" insulating glass
 - Dual-sealed Warm Edge Super Spacer system
- ◇ **Hardware**
 - Heavy-commercial Amesbury/Truth lock and crank-out system

Performance

- ◇ Structural & Thermal (test reports available upon request)

Model	Casement (Project-Out)
NAFS Rating	AW-100
Test Size	36" x 60"
Design Pressure (P.S.F.)	100
Air Infiltration (cfm/ft ²)	<0.10
Water Resistance (P.S.F.)	15
CR (Condensation Resistance)	47-81
U-Value (ranges based on multiple Low-E/Argon combinations)	0.19-0.36
SHGC (ranges based on multiple Low-E/Argon combinations)	0.11-0.45
OITC/STC	

Due to periodic re-certification requirements, result shown may vary.

Options

- ◇ **Available Configurations**
 - Project-out Casement (Left or Right)
 - Continuous frame capabilities
- ◇ **Enhanced Design**
 - Traditional/Historic beveled frame glazing (C605 Series)
- ◇ **Muntin Choices**
 - Internal lites available
- ◇ **Hardware and Screen**
 - ADA Hardware
 - Limited travel hardware
- ◇ **Glazing**
 - Multiple Low-E and argon glazing choices
 - Impact-rated glazing package
 - 1 3/8" Triple Glaze Insulating Glass
 - Capillary tubes
 - Wide variety of tinting and pane thickness options
- ◇ **Panning & Trim Choices**
 - Wide variety of panning, receptor and trim available
- ◇ **Mulling**
 - Wide variety of structural mulls

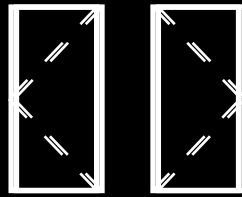
Benefits

- ◇ Capacity to match exterior colors for unique project facades
- ◇ Two-tone capabilities with a color to match the building interior and another to match the exterior
- ◇ Maximum sizing affords the facilitation of large sizes for taller and wider window openings
- ◇ Thermal performances never thought achievable in aluminum windows

Operating Force (per ASTM E2068):
AW-PG100-C: Initiate motion - 36 N (8 lbf)
Maintain motion - 18 N (6 lbf)
AW-PG70-C: Initiate motion and Maintain motion
- 13 N (3 lbf)

Our products are tested to the standards of and certified by some of the foremost organizations in the fenestration industry.



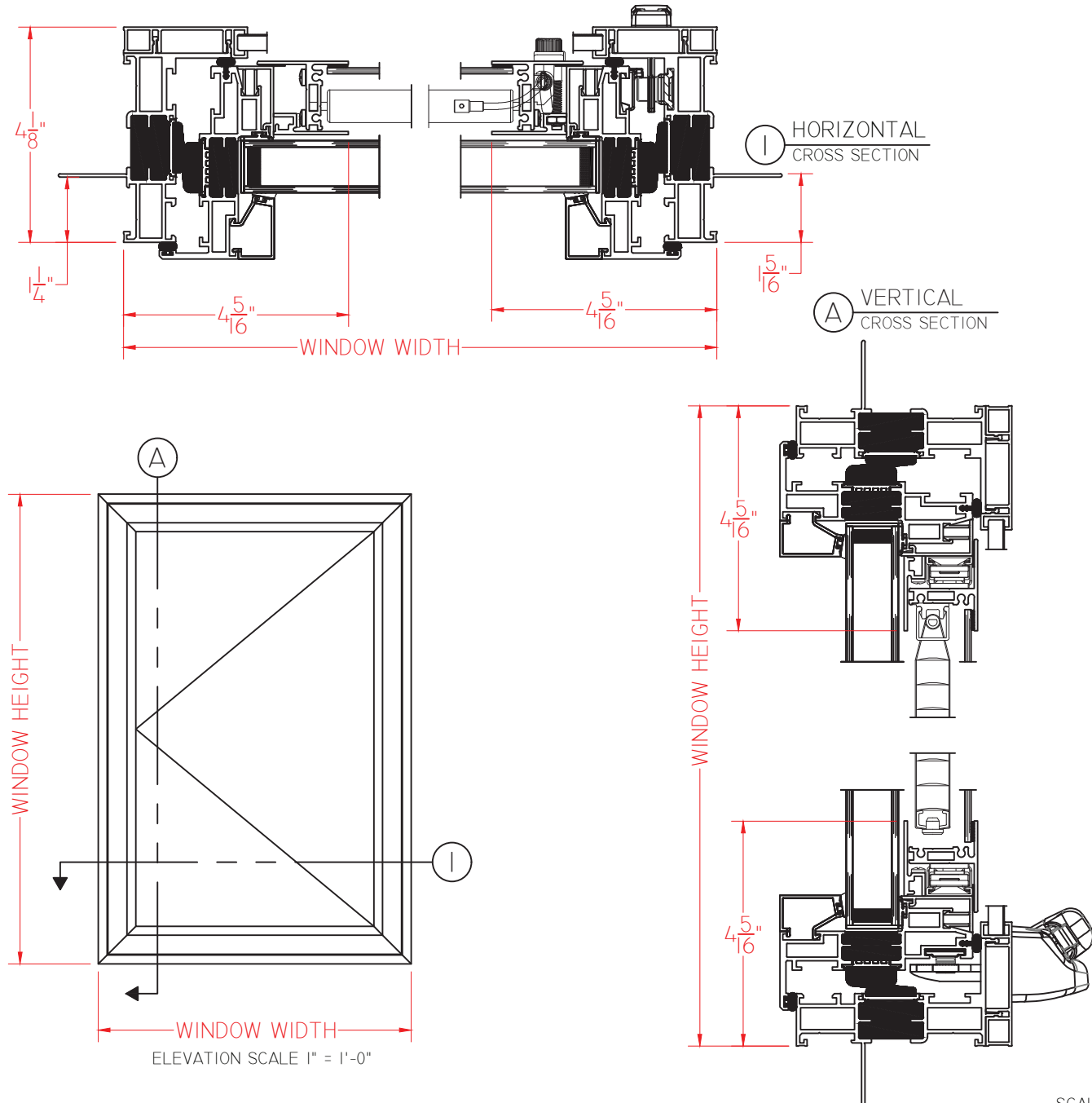


C600 Series With Blinds/Storm Panel 4 1/8" Frame Depth Casement (Project-Out)

C600 Series Casement (Project-Out)

With Blinds/Storm Panel,
Square Glazing Stops, Roto
Hardware and 1" I.G.

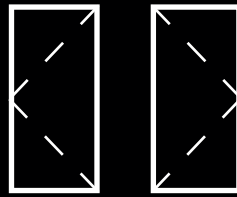
This document contains confidential and proprietary information
intended for the private use of Quaker.
© 2021 Quaker Window Products Co., All rights reserved.
Quaker reserves the right to change any/all designs without notice.



SCALE 1:3

Our products are tested to the standards of and
certified by some of the foremost organizations
in the fenestration industry.



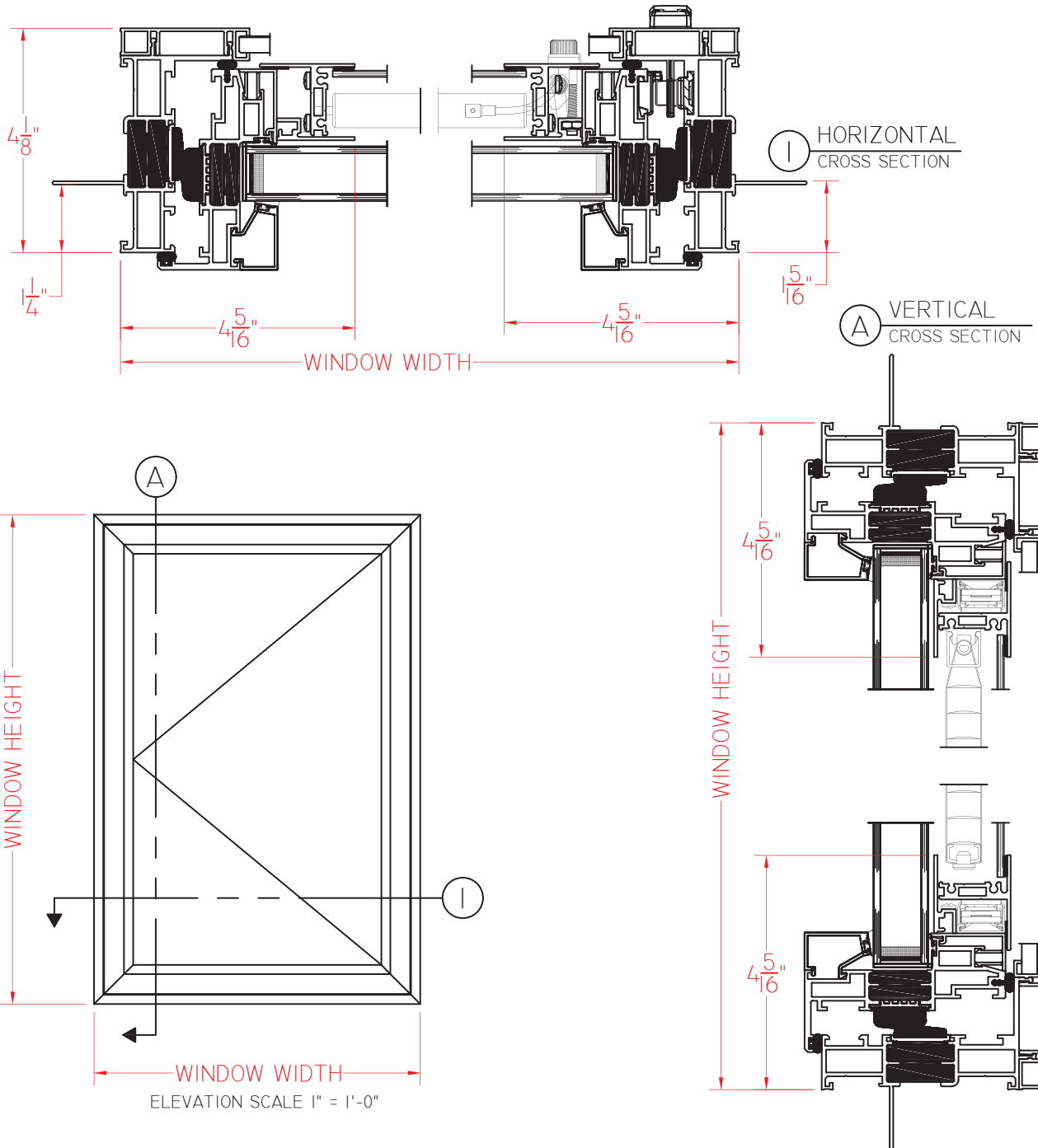


C600 Series With Blinds/Storm Panel 4 1/8" Frame Depth Casement (Project-Out)

C600 Series Casement (Project-Out)

With Blinds/Storm Panel, Square Glazing Stops, Push-Out Hardware and 1" I.G.

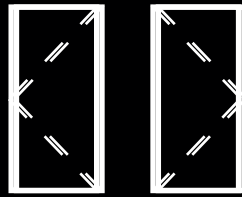
This document contains confidential and proprietary information intended for the private use of Quaker.
© 2021 Quaker Window Products Co., All rights reserved.
Quaker reserves the right to change any/all designs without notice.



SCALE 1:3

Our products are tested to the standards of and certified by some of the foremost organizations in the fenestration industry.



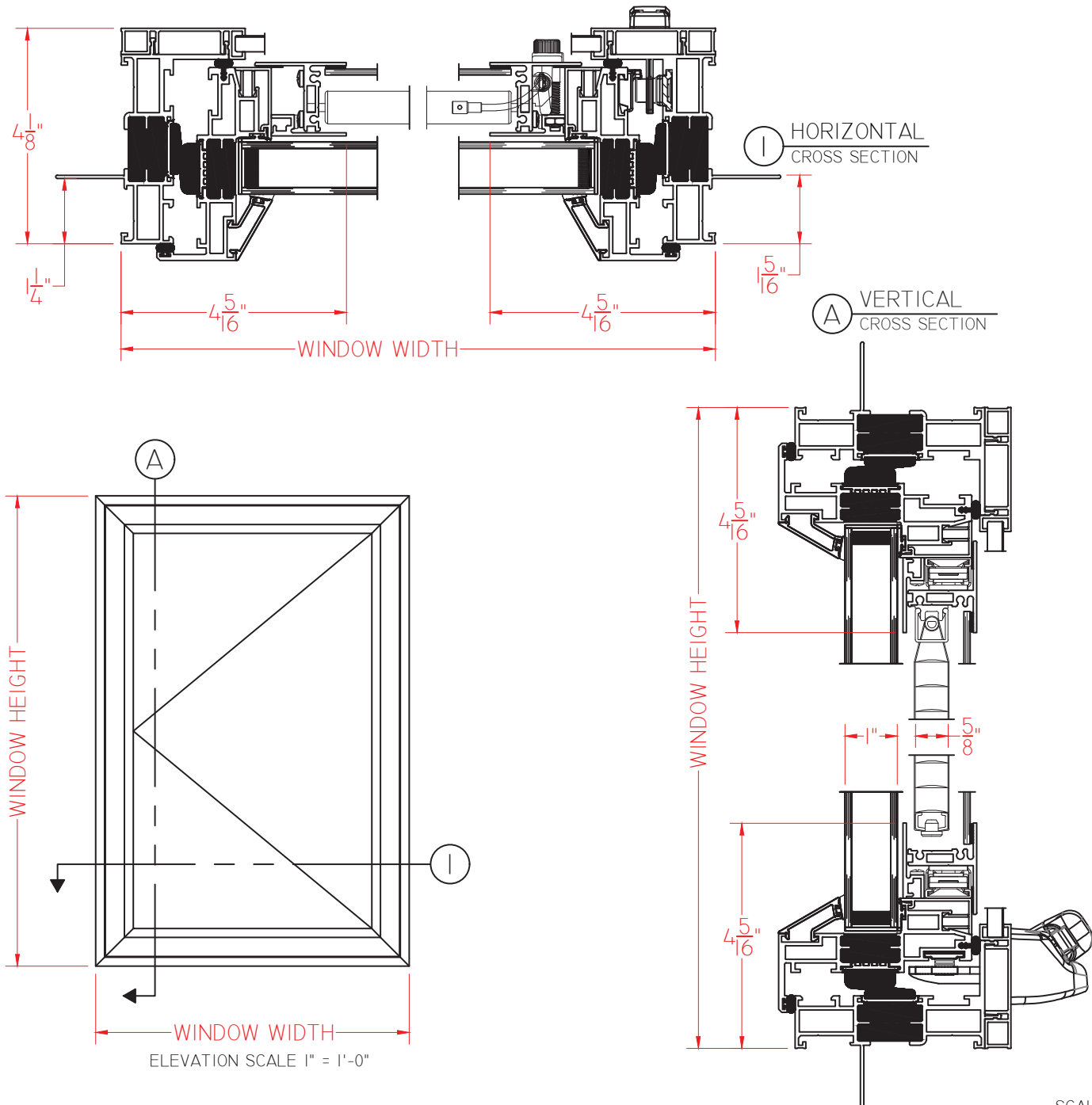


C605 Series With Blinds/Storm Panel 4 1/8" Frame Depth Casement (Project-Out)

C605 Series Casement (Project-Out)

With Blinds/Storm Panel,
Beveled Glazing Stops, Roto
Hardware and 1" I.G.

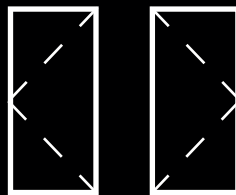
This document contains confidential and proprietary information
intended for the private use of Quaker.
© 2021 Quaker Window Products Co., All rights reserved.
Quaker reserves the right to change any/all designs without notice.



SCALE 1:3

Our products are tested to the standards of and
certified by some of the foremost organizations
in the fenestration industry.



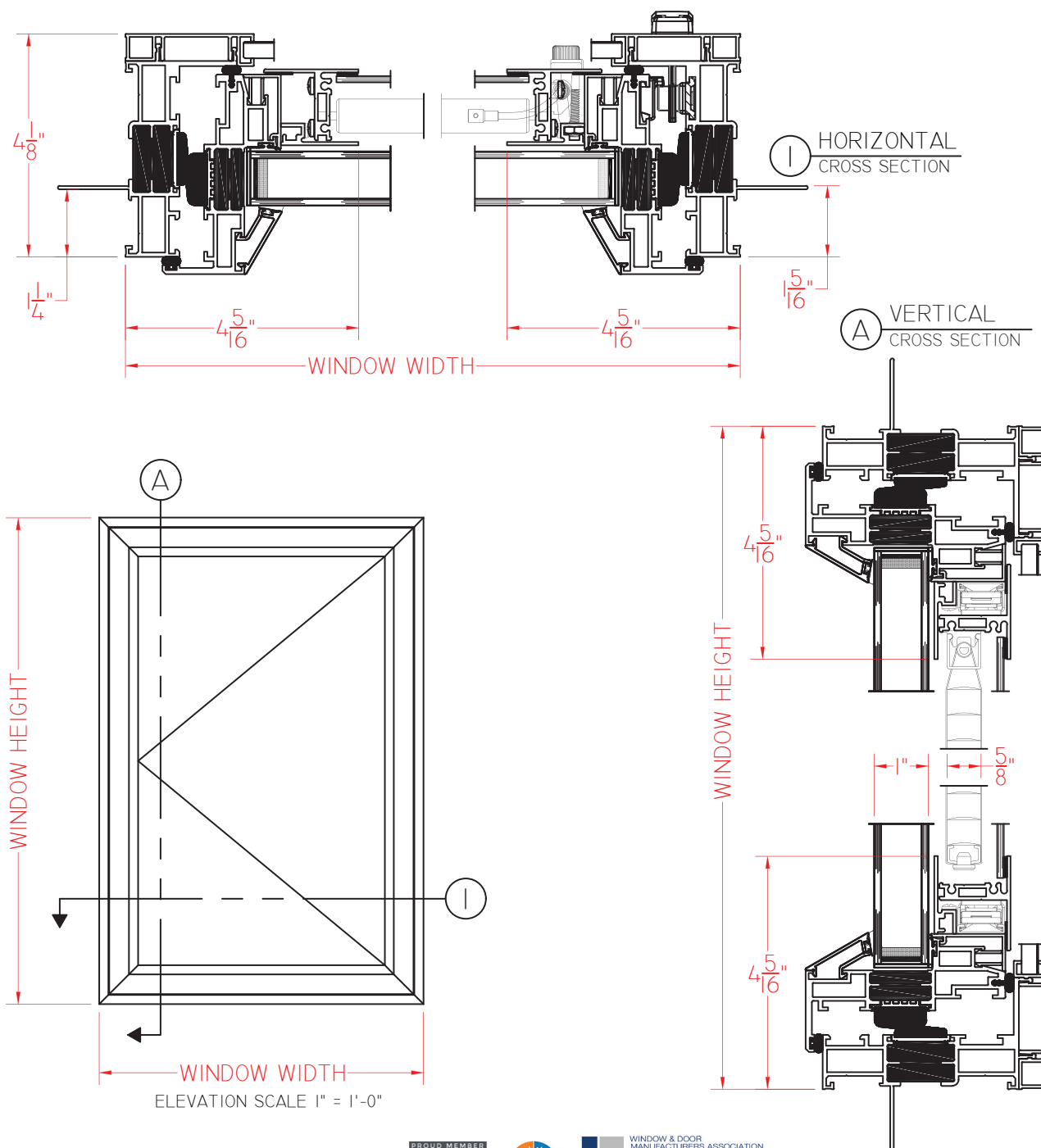


C605 Series With Blinds/Storm Panel 4 1/8" Frame Depth Casement (Project-Out)

C605 Series Casement (Project-Out)

With Blinds/Storm Panel, Beveled
Glazing Stops, Push-Out Hardware
and 1" I.G.

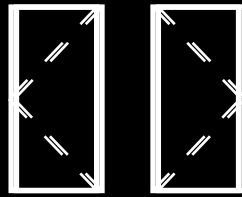
This document contains confidential and proprietary information
intended for the private use of Quaker.
© 2021 Quaker Window Products Co., All rights reserved.
Quaker reserves the right to change any/all designs without notice.



Our products are tested to the standards of and
certified by some of the foremost organizations
in the fenestration industry.



SCALE 1:3

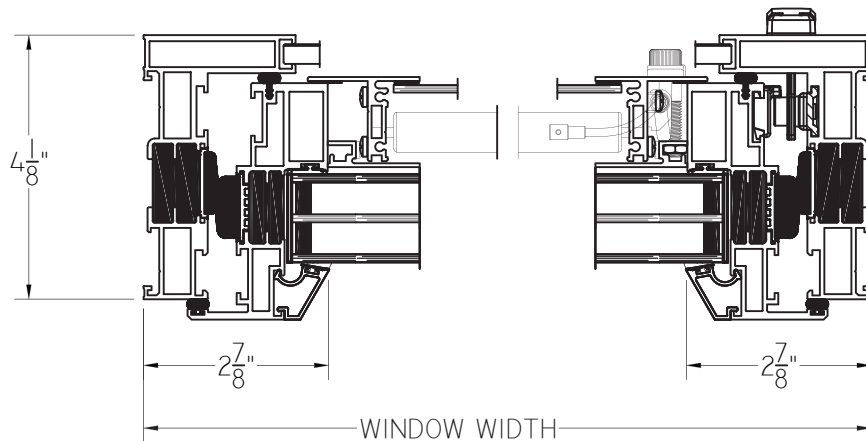


C600 Series With Blinds/Storm Panel 4 1/8" Frame Depth Casement (Project-Out)

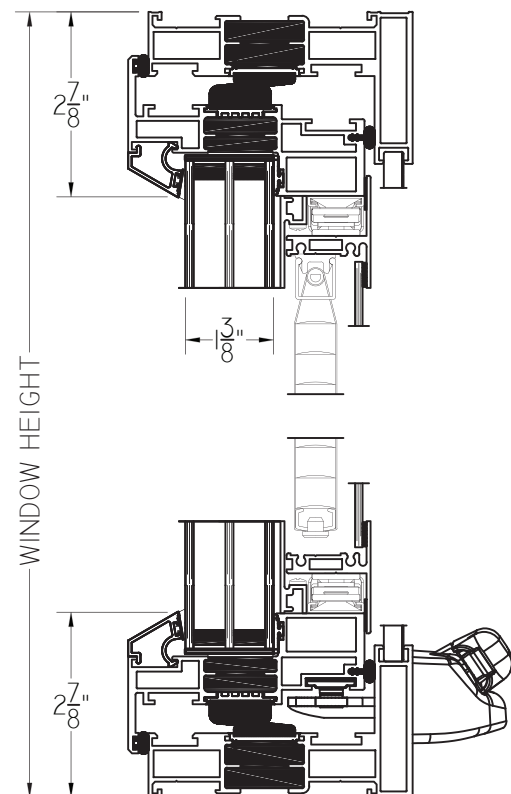
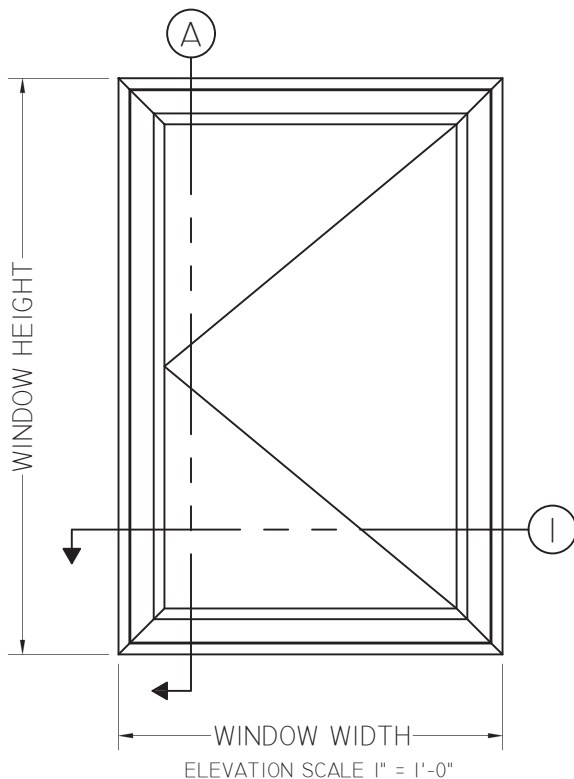
C605 Series Casement (Project-Out)

With Blinds/Storm Panel,
Beveled Glazing Stops, Roto
Hardware and 1 3/8" I.G.

This document contains confidential and proprietary information
intended for the private use of Quaker.
© 2021 Quaker Window Products Co., All rights reserved.
Quaker reserves the right to change any/all designs without notice.



① HORIZONTAL
CROSS SECTION



Ⓐ VERTICAL
CROSS SECTION

SCALE 1:3

Our products are tested to the standards of and
certified by some of the foremost organizations
in the fenestration industry.

