

E600 Series With Blinds/Storm Panel 3 1/4" Frame Depth Casement

With Blinds/
Storm Panel

E600 Series Casement (Project-Out)

Features

- ◇ **Material**
 - Extruded Aluminum
- ◇ **Commercial Framing System**
 - 3 1/4" main frame
 - 0.094" wall thickness of interior and exterior walls, 0.078" wall thickness elsewhere
- ◇ **Thermally Enhanced Design**
 - Azon pour and debridge thermal break is 1/2" wide in all main frame and vent rail extrusions
 - Assembled with heavy duty Monticelli cast aluminum corner keys
 - Mitered and pressure sealed internally with injected silicone through corner key passages. Wrap-around marine glazing
 - Blinds/Storm Panel applied to interior
- ◇ **Glazing**
 - 1" insulating glass
- ◇ **Hardware**
 - Butt hinges with roto hardware (pull-in only)
 - 4-Bar hinges on both project-out and project-in windows
 - Euro lock (pull-in only)
 - Adjustment pole operator (roto only)
 - ADA turn handle (roto only)
 - Custodial lock (pull-in only)
- ◇ **Screen**
 - Extruded aluminum screen frame with BetterVue™ mesh (Crank-out only)

Performance

- ◇ Structural & Thermal (test reports or thermal simulations available upon request)

Model	Casement (Project-Out)	Casement (Project-In)
Test Size	36" x 72"	
NAFS Rating	AW-70	
Structural Load P.S.F.	100	
Air at 50 MPH (cfm/ft²)	<0.10	
Water (No Penetration) P.S.F.	12	
U-Value (ranges based on multiple Low-E/Argon combinations)	0.27-0.58	
SHGC (ranges based on multiple Low-E/Argon combinations)	0.09-0.49	

Due to periodic re-certification requirements, result shown may vary.

Options

- ◇ **Available Configurations**
 - Project-out and Project-in casement
 - Push-out, Crank-out or Pull-in
 - Wire frame capabilities
- ◇ **Muntin Choices**
 - Internal or simulated divided lites available
- ◇ **Limited Travel Hardware**
- ◇ **Screen**
 - Extruded aluminum screen frame with aluminum wire mesh
 - Extruded aluminum screen frame with sunscreen mesh
 - Extruded aluminum screen frame with stainless steel 0.009" thickness mesh
- ◇ **Glazing**
 - Multiple Low-E and argon glazing choices
 - Capillary tubes
 - Wide variety of glazing, tinting and thickness options
- ◇ **Panning & Trim Choices**
 - Wide variety of panning, receptor and trim available
- ◇ **Mulling**
 - Wide variety of structural mulls

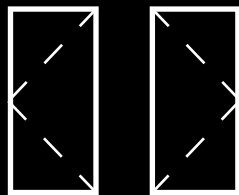
Benefits

- ◇ The capacity to match exterior colors for unique project facades
- ◇ The ability to facilitate large sizes for taller and wider window openings

Operating Force: 9 lbf (project-out casement), 14 lbf (project-in casement), 3 lbf (ADA Handle maintain motion), 3 lbf (ADA Handle lock)

Our products are tested to the standards of and certified by some of the foremost organizations in the fenestration industry.



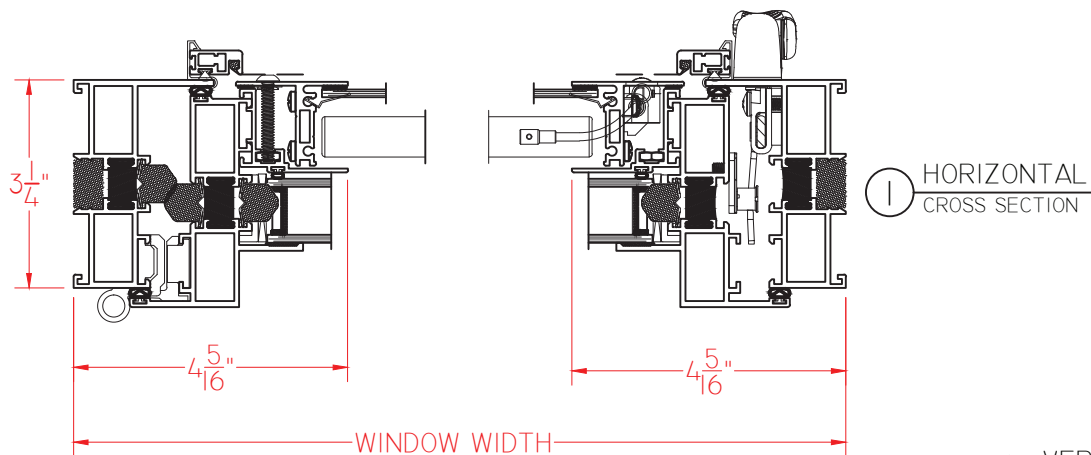


E600 Series With Blinds/Storm Panel 3 1/4" Frame Depth Casement

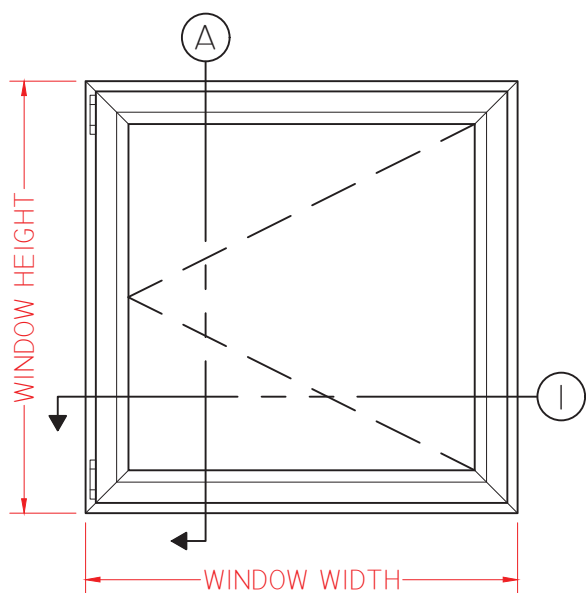
E600 Series Casement (Project-Out)

With Blinds/Storm
Panel and Roto
Hardware

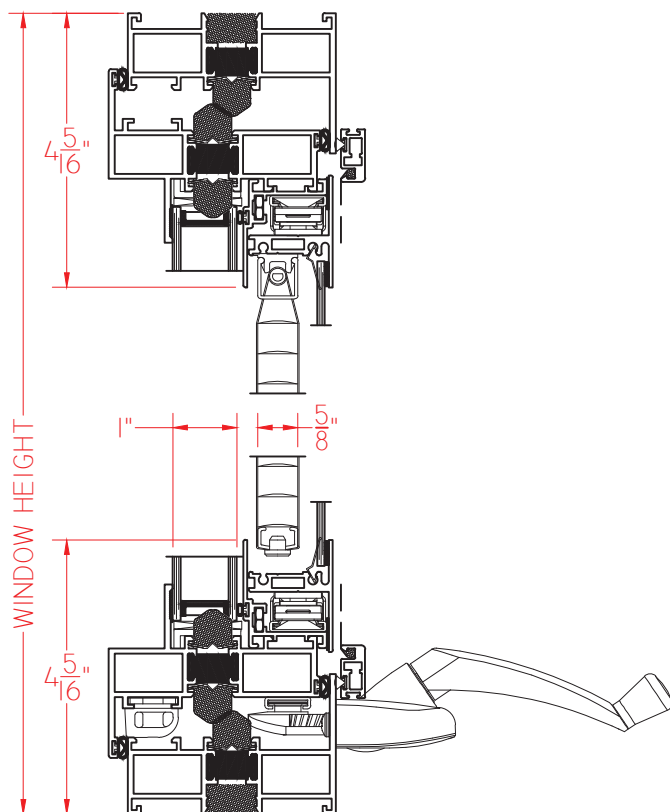
This document contains confidential and proprietary information intended for the private use of Quaker.
© 2016 Quaker Window Products Co., All rights reserved.
Quaker reserves the right to change any/all designs without notice.



A VERTICAL
CROSS SECTION



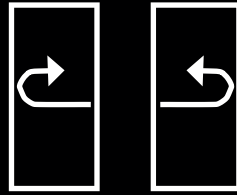
ELEVATION SCALE 3/4" = 1'-0"



SCALE 1:3

Our products are tested to the standards of and certified by some of the foremost organizations in the fenestration industry.



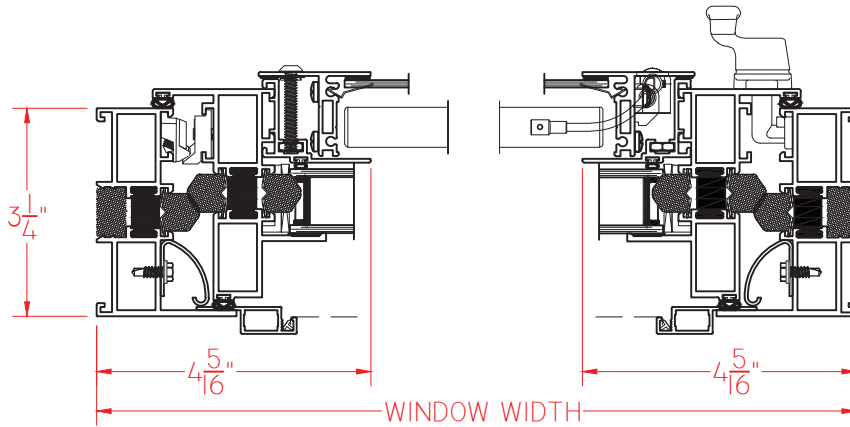


E600 Series With Blinds/Storm Panel 3 1/4" Frame Depth Project-In Casement

E600 Series Casement (Project-In)

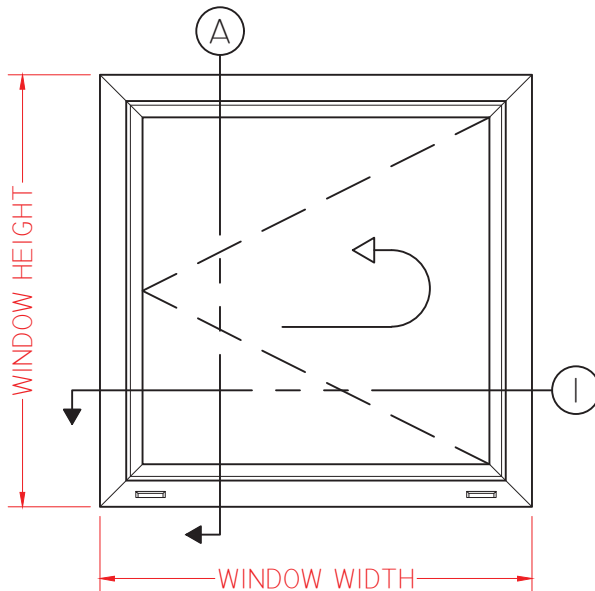
With Blinds/Storm
Panel and Euro Lock
Hardware

This document contains confidential and proprietary information intended for the private use of Quaker.
© 2016 Quaker Window Products Co., All rights reserved.
Quaker reserves the right to change any/all designs without notice.

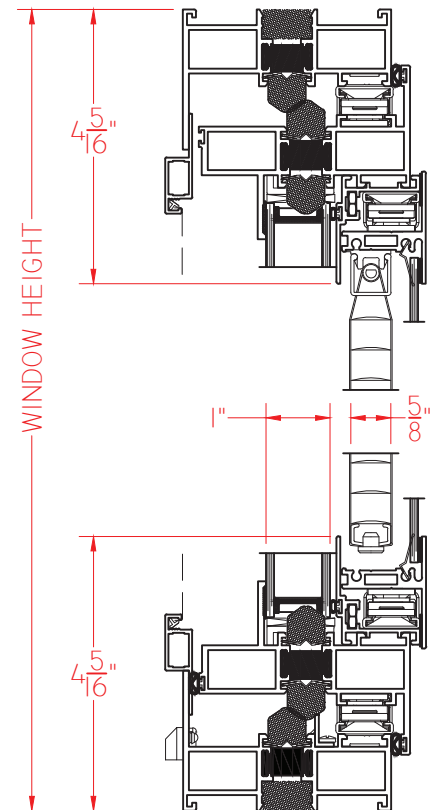


① HORIZONTAL
CROSS SECTION

Ⓐ VERTICAL
CROSS SECTION



ELEVATION SCALE 3/4" = 1'-0"



SCALE 1:3

Our products are tested to the standards of and certified by some of the foremost organizations in the fenestration industry.

