



V300 3 1/4" Frame Depth Inswing/Outswing Side Hinged Door

V300 Series Side Hinged Door

Features

- ◇ **Material**
 - uPVC Vinyl
- ◇ **Commercial Framing System**
 - 3 1/4" main frame
- ◇ **Enhanced Design**
 - Mitered and fusion welded corners
 - 2 1/2" threshold
- ◇ **Glazing**
 - 1" insulating glass
- ◇ **Hardware**
 - Multi-point WHS hardware
 - Butt hinges
 - Keyed hardware
- ◇ **Colors**
 - White or Sandstone vinyl (interior/exterior)

Options

- ◇ **Available Configurations**
 - 1-panel (hinge left or hinge right)
 - Inswing or Outswing
 - Fixed Sidelites
 - Fixed Transoms
- ◇ **Sill**
 - ADA threshold with 10" bottom rail
- ◇ **Muntin Choices**
 - Internal or simulated divided lites available
- ◇ **Glazing**
 - Capillary tubes
 - Wide variety of glazing, tinting and thickness options
- ◇ **Colors**
 - Twelve painted exterior colors (with White or Sandstone vinyl interior)
 - Unlimited custom painted exterior colors
 - High-performance Textured Black laminate (interior/exterior)
 - High-performance Textured Black laminate, Textured Dark Bronze laminate, Textured Dark Grey laminate or Resembles Clear Anodized laminate (exterior only with White vinyl)

Performance

- ◇ Structural & Thermal (test reports or thermal simulations available upon request)

Model	Side Hinged Door
	1-panel
AAMA/WDMA/CSA 101/I.S.2/A440-08 Rating	CW-50
Air Infiltration (cfm/ft ²)	<.30
Water (No Penetration) P.S.F.	7.5
U-Value (ranges based on multiple Low-E/Argon combinations)	0.21-0.30
SHGC (ranges based on multiple Low-E/Argon combinations)	0.09-0.24
Test size	40" x 84"

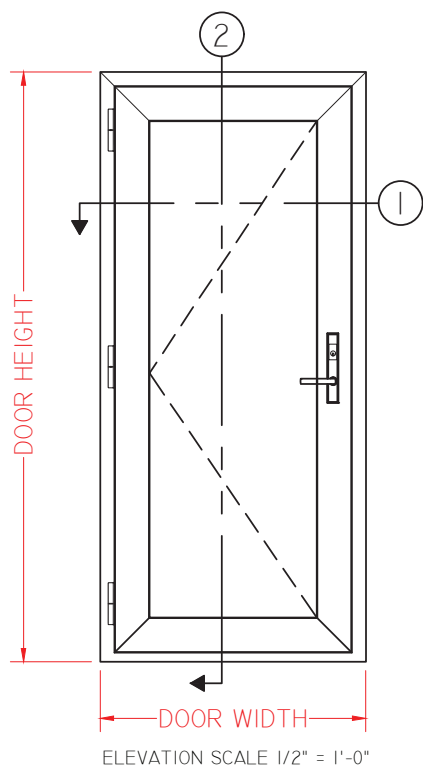
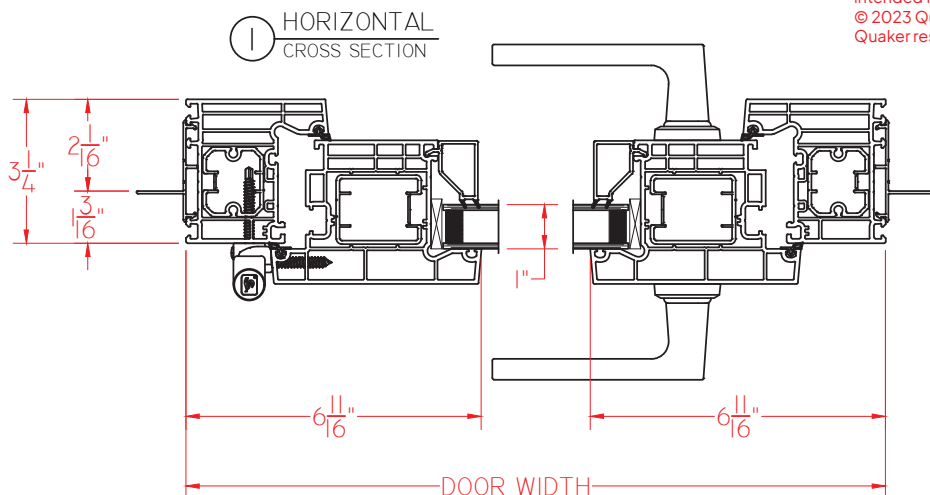
Due to periodic re-certification requirements, result shown may vary.

Our products are tested to the standards of and certified by some of the foremost organizations in the fenestration industry.

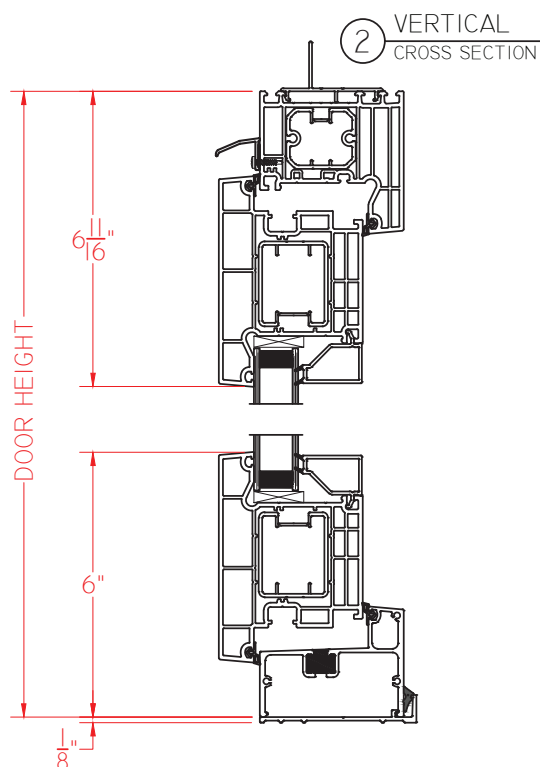


V300 Series Outswing Side Hinged Door

This document contains confidential and proprietary information intended for the private use of Quaker.
© 2023 Quaker Window Products Co., Inc.. All rights reserved.
Quaker reserves the right to change any/all designs without notice.



ELEVATION SCALE 1/2" = 1'-0"



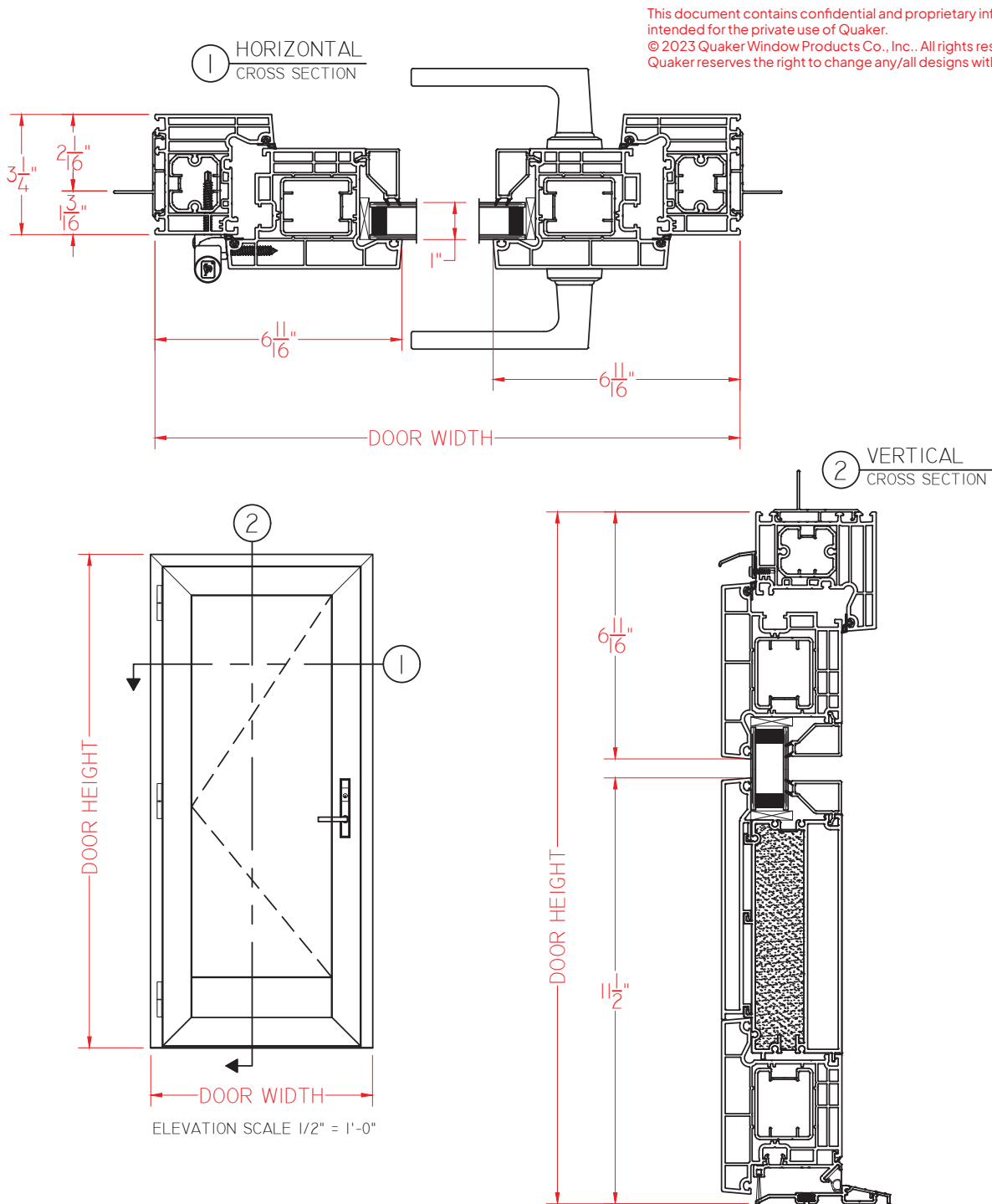
SCALE 3" = 1'-0"

Our products are tested to the standards of and certified by some of the foremost organizations in the fenestration industry.



V300 Series Outswing Side Hinged Door

Shown with 10"
Bottom Rail and
ADA Sill



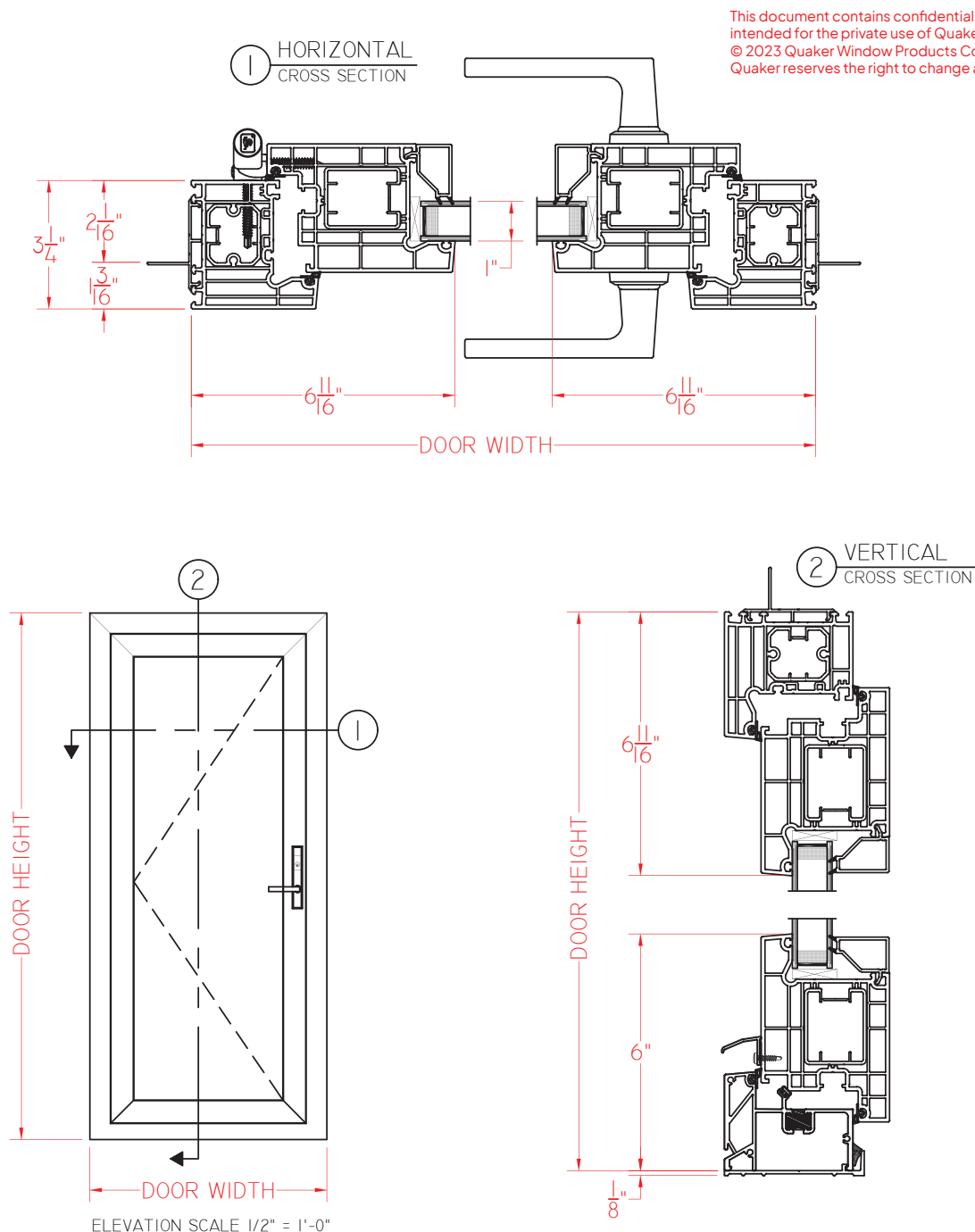
SCALE 3" = 1'-0"

Our products are tested to the standards of and certified by some of the foremost organizations in the fenestration industry.



V300 Series Inswing Side Hinged Door

Shown with Square
Glazing Stops and
Enhanced Sill



This document contains confidential and proprietary information intended for the private use of Quaker.
© 2023 Quaker Window Products Co., Inc.. All rights reserved.
Quaker reserves the right to change any/all designs without notice.

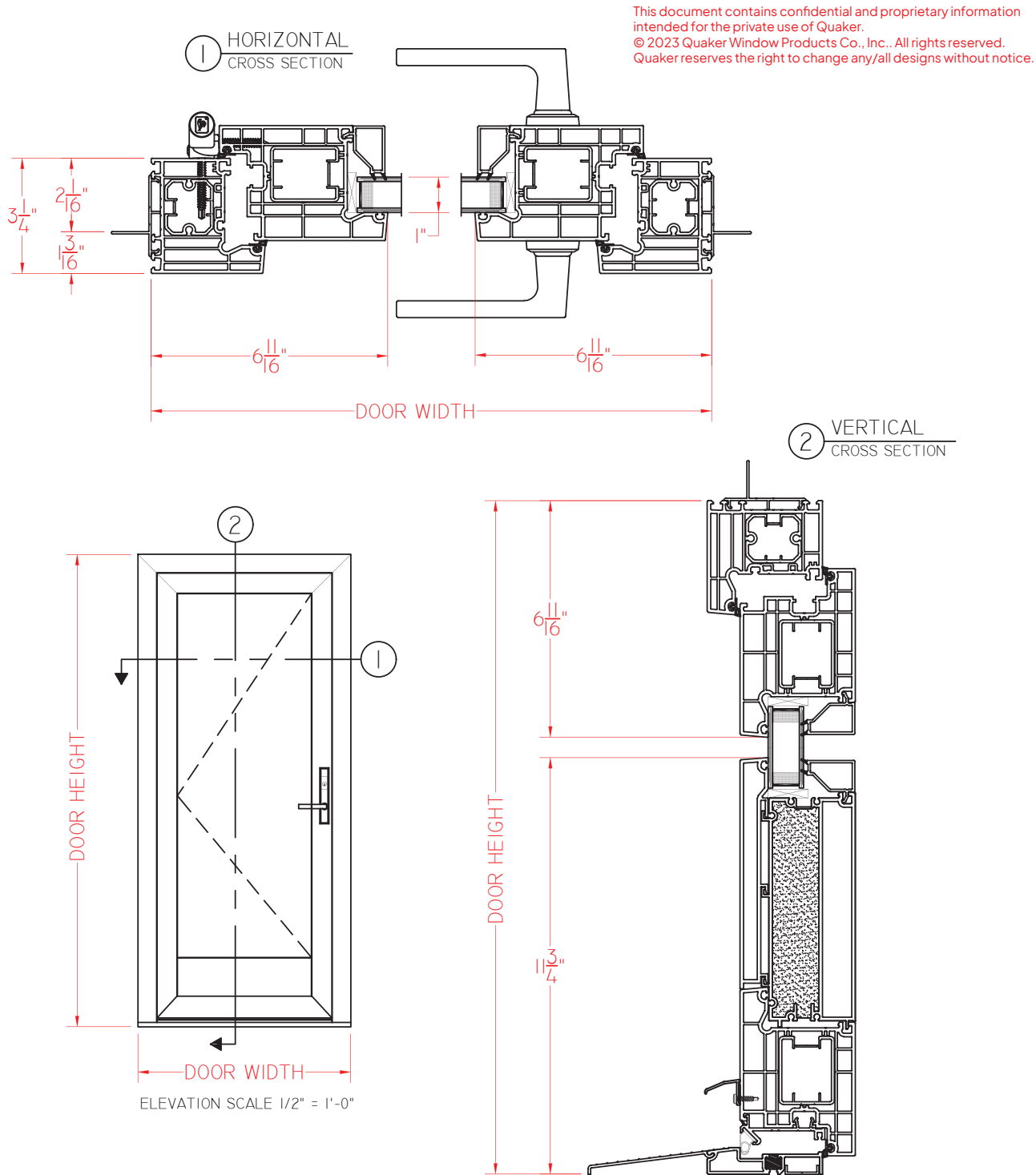
Our products are tested to the standards of and certified by some of the foremost organizations in the fenestration industry.



SCALE 3" = 1'-0"

V300 Series Inswing Side Hinged Door

Shown with 10"
Bottom Rail and
ADA Sill



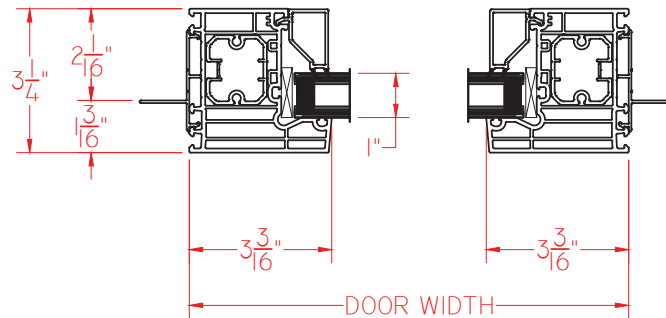
Our products are tested to the standards of and certified by some of the foremost organizations in the fenestration industry.



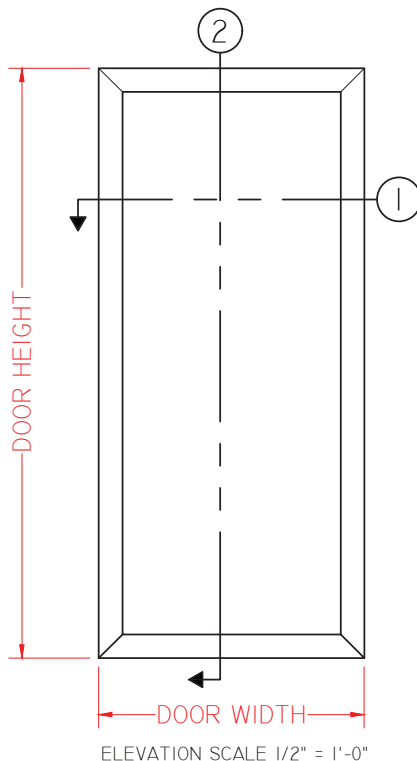
SCALE 3" = 1'-0"

V300 Series Sidelite for Side Hinged Door

① HORIZONTAL
CROSS SECTION

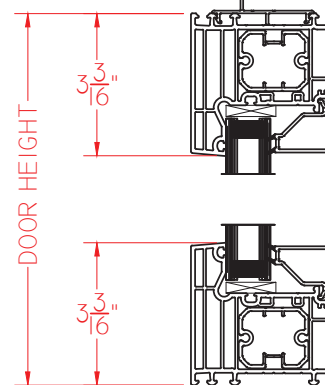


This document contains confidential and proprietary information intended for the private use of Quaker.
© 2023 Quaker Window Products Co., Inc.. All rights reserved.
Quaker reserves the right to change any/all designs without notice.



ELEVATION SCALE 1/2" = 1'-0"

② VERTICAL
CROSS SECTION



SCALE 3" = 1'-0"

Our products are tested to the standards of and certified by some of the foremost organizations in the fenestration industry.

