

## C700/C705 Series 4 1/8" Frame Depth Casement (Project-Out)

### C700/C705 Series Casement (Project-Out)

#### Features

- ◇ **Material**
  - Extruded Aluminum
- ◇ **Framing System**
  - Patented OptiCore Technology
  - Architectural grade aluminum frame
  - Dual Euro-Groove frame system
- ◇ **Enhanced Design**
  - Azo-Core Thermal Barrier System for reduced thermal-conductivity and increased energy-efficiency
  - Modern, squared frame glazing (C700 Series)
  - Traditional/Historic beveled frame glazing (C705 Series)
  - With or without Integral Nailing Fin
- ◇ **Glazing**
  - Impact-rated glazing package
  - Dual-sealed Warm Edge Super Spacer system
- ◇ **Hardware**
  - Heavy-commercial Amesbury/Truth lock and crank-out system
- ◇ **Anchorage Methods**
  - Nailing Fin
  - Trim/Clips
- ◇ **Screen**
  - Easily removable FlexScreen system

#### Performance

- ◇ Structural & Thermal (test reports available upon request)

Model	Casement
NAFS Rating	AW-PG70-C
Test Size	42" x 84"
Design Pressure (P.S.F.)	105.26
Air Infiltration	<0.10
Water Resistance (P.S.F.)	12.11
CR (Condensation Resistance)	
U-Value (ranges based on multiple Low-E/Argon combinations)	
SHGC (ranges based on multiple Low-E/Argon combinations)	
Missile Level	D
Wind Zone	3

Due to periodic re-certification requirements, result shown may vary.

#### Options

- ◇ **Available Configurations**
  - Project-out Casement (Left or Right)
- ◇ **Muntin Choices**
  - Internal or simulated divided lites available
- ◇ **Hardware and Screen**
  - ADA Hardware
  - Limited travel hardware
  - Retractable screen systems
- ◇ **Glazing**
  - Multiple Low-E and argon glazing choices
  - Capillary tubes
  - Wide variety of tinting and pane thickness options
- ◇ **Panning & Trim Choices**
  - Wide variety of panning, receptor and trim available

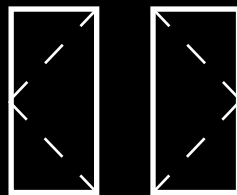
#### Benefits

- ◇ Meets ASTM 1886 (Large Missile Impact testing)
- ◇ Capacity to match exterior colors for unique project facades
- ◇ Two-tone capabilities with a color to match the building interior and another to match the exterior
- ◇ Maximum sizing affords the facilitation of large sizes for taller and wider window openings
- ◇ Thermal performances never thought achievable in aluminum windows

Operating Force (per ASTM E2068):  
AW-PG100-C: Initiate motion - 36 N (8 lbf)  
Maintain motion - 18 N (6 lbf)  
AW-PG70-C: Initiate motion and Maintain motion - 13 N (3 lbf)

Our products are tested to the standards of and certified by some of the foremost organizations in the fenestration industry.

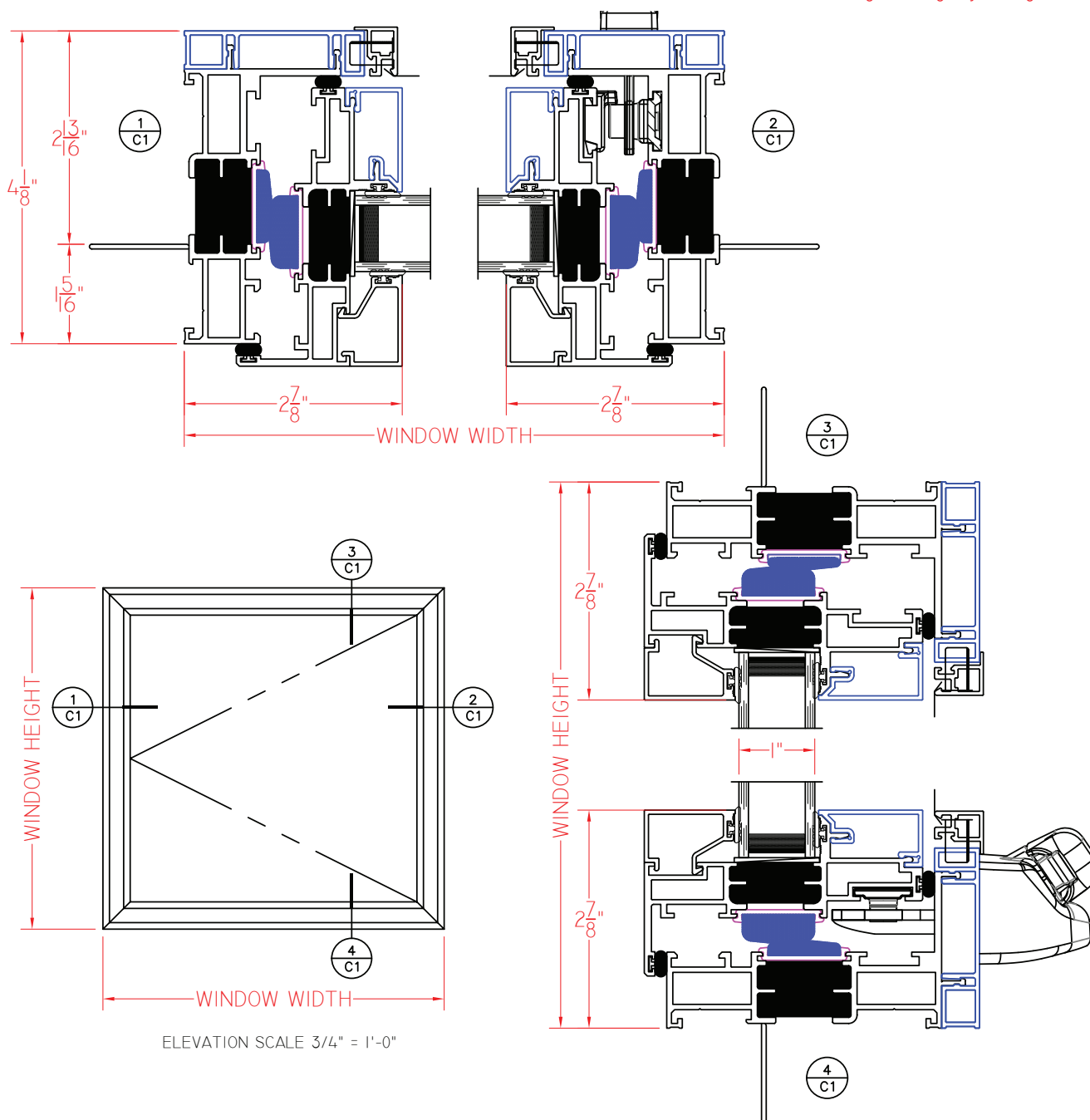




# C700 Series 4 1/8" Frame Depth Casement (Project-Out)

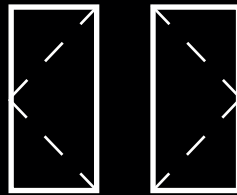
## C700 Series Casement (Project-Out)

This document contains confidential and proprietary information intended for the private use of Quaker.  
© 2019 Quaker Window Products Co., Inc. All rights reserved.  
Quaker reserves the right to change any/all designs without notice.



Our products are tested to the standards of and certified by some of the foremost organizations in the fenestration industry.

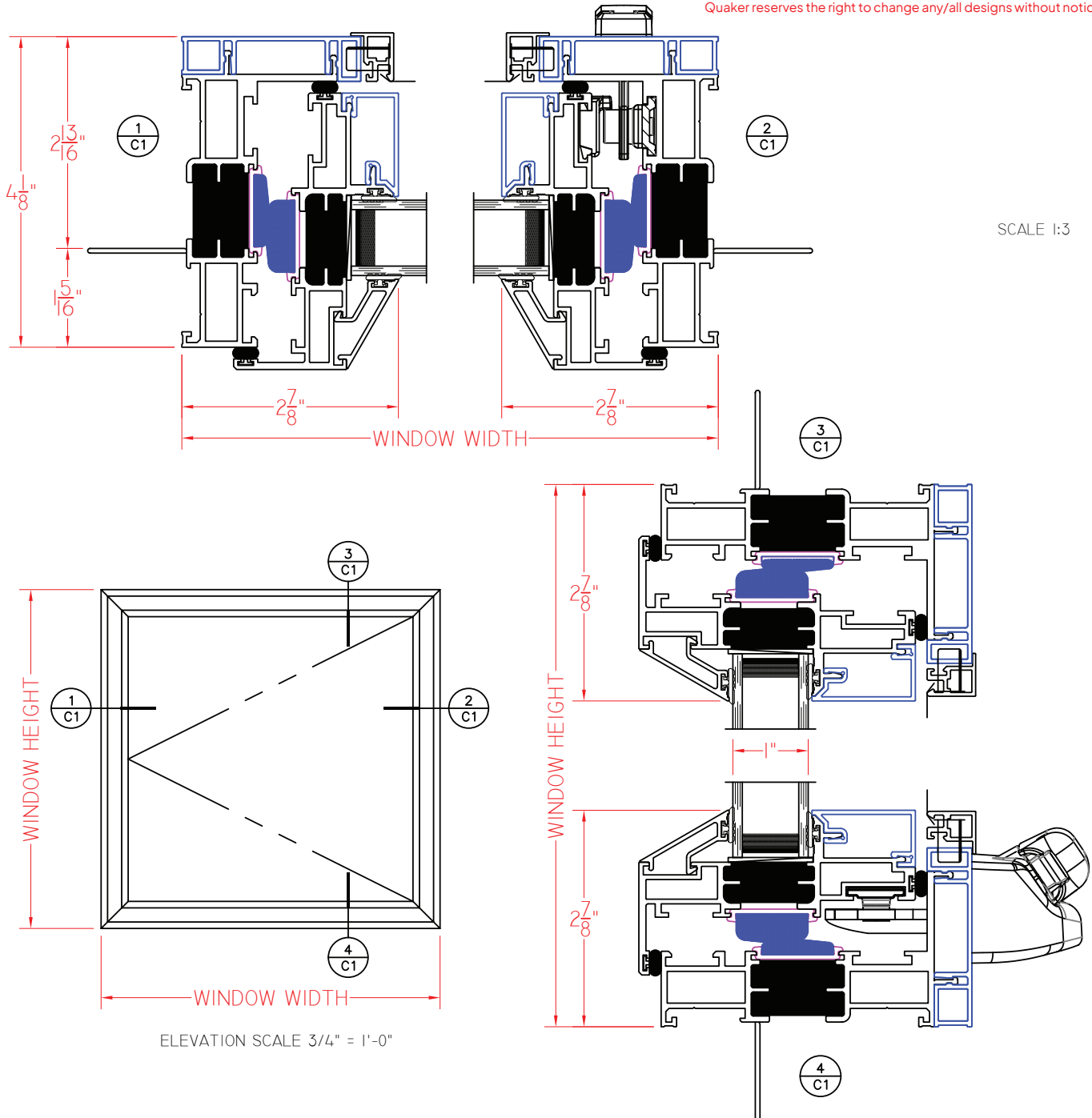




# C705 Series 4 1/8" Frame Depth Casement (Project-Out)

## C705 Series Casement (Project-Out)

This document contains confidential and proprietary information intended for the private use of Quaker.  
© 2019 Quaker Window Products Co., Inc. All rights reserved.  
Quaker reserves the right to change any/all designs without notice.



Our products are tested to the standards of and certified by some of the foremost organizations in the fenestration industry.

