

C700/C705 Series 4 1/8" Frame Depth Fixed (Picture Window)

C700/C705 Series Fixed Picture Window

Features

- ◇ **Material**
 - Extruded Aluminum
- ◇ **Framing System**
 - Patented OptiCore Technology
 - 4 1/8" architectural grade aluminum frame
 - Dual Euro-Groove frame system
- ◇ **Enhanced Design**
 - Azo-Core Thermal Barrier System for reduced thermal-conductivity and increased energy-efficiency
 - Modern, squared frame glazing (C700 Series) or Traditional/Historic beveled frame glazing (C705 Series)
 - With or without Integral Nailing Fin
- ◇ **Glazing**
 - Impact-rated glazing package
 - Dual-sealed Warm Edge Super Spacer system
- ◇ **Anchorage Methods**
 - Nailing Fin
 - Trim/Clips
 - Subframe

Performance

- ◇ Structural & Thermal (test reports available upon request)

Model	Fixed (Picture Window)
NAFS Rating	AW-PG50-F
Test Size	60" x 96"
Air Infiltration at 25 MPH (cfm/ft ²)	<0.10
Water Resistance (P.S.F.)	12.11
U-Value (ranges based on multiple Low-E/Argon combinations)	
SHGC (ranges based on multiple Low-E/Argon combinations)	
Missile Level	D
Wind Zone	3

Due to periodic re-certification requirements, result shown may vary.

Options

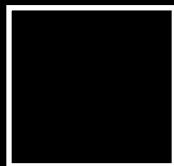
- ◇ **Available Configurations**
 - Fixed
- ◇ **Muntin Choices**
 - Internal or simulated divided lites available
- ◇ **Glazing**
 - Multiple Low-E and argon glazing choices
 - Capillary tubes
 - Wide variety of tinting and pane thickness options
- ◇ **Panning & Trim Choices**
 - Wide variety of panning, receptor and trim available

Benefits

- ◇ Meets ASTM 1886 (Large Missile Impact testing)
- ◇ Capacity to match exterior colors for unique project facades
- ◇ Two-tone capabilities with a color to match the building interior and another to match the exterior
- ◇ Maximum sizing affords the facilitation of large sizes for taller and wider window openings
- ◇ Thermal performances never thought achievable in aluminum windows

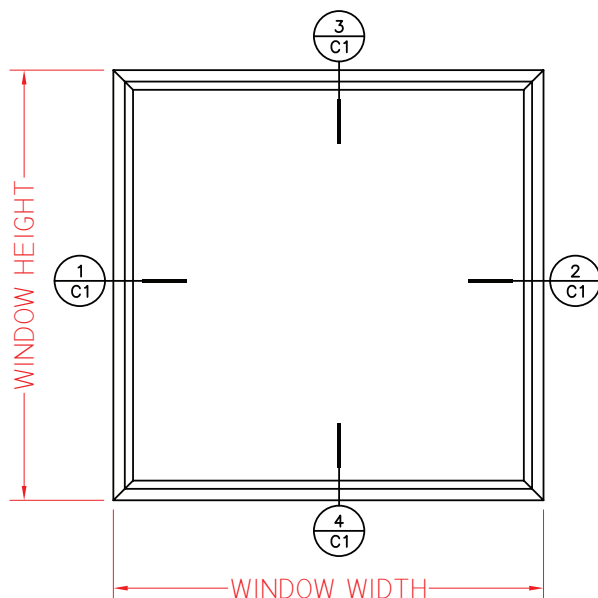
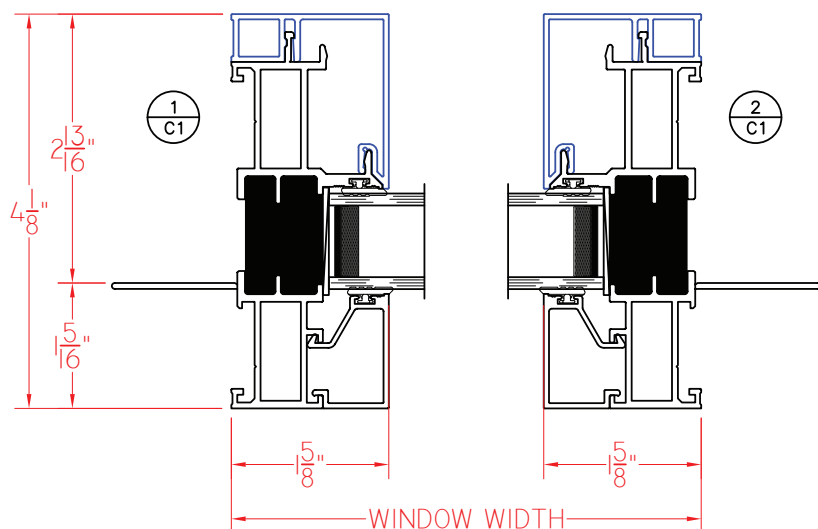
Our products are tested to the standards of and certified by some of the foremost organizations in the fenestration industry.



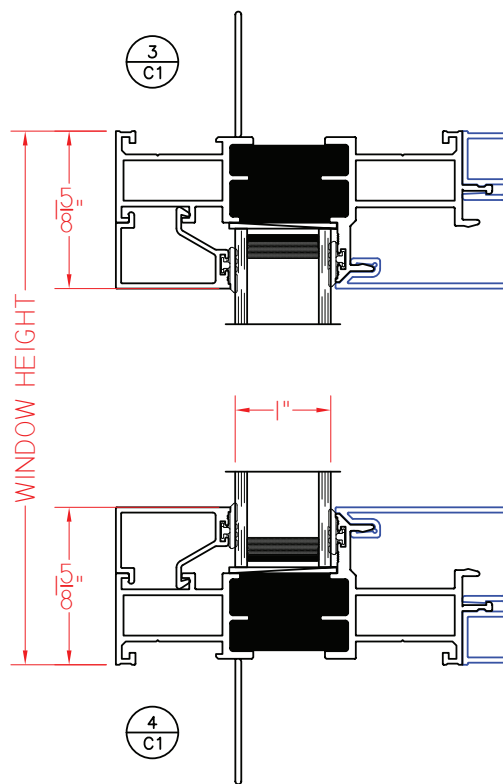


C700 Series Fixed Picture Window

This document contains confidential and proprietary information intended for the private use of Quaker.
© 2019 Quaker Window Products Co., Inc. All rights reserved.
Quaker reserves the right to change any/all designs without notice.

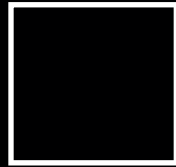


ELEVATION SCALE 3/4" = 1'-0"



Our products are tested to the standards of and certified by some of the foremost organizations in the fenestration industry.

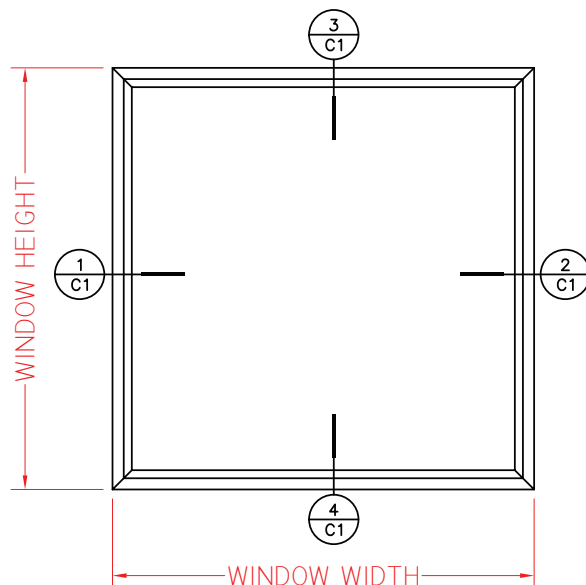
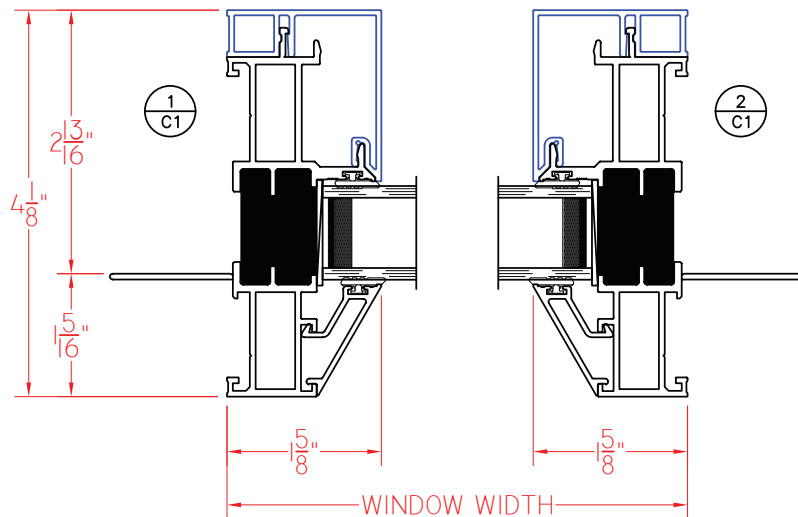




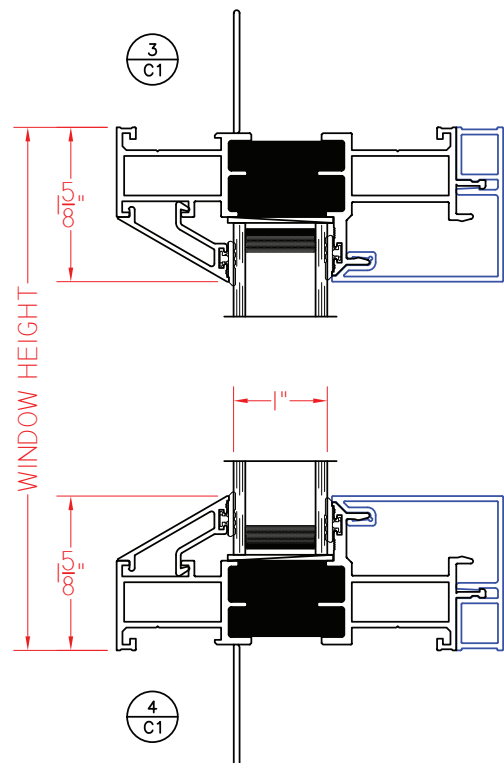
C705 Series 4 1/8" Frame Depth Fixed (Picture Window)

C705 Series Fixed (Picture Window)

This document contains confidential and proprietary information intended for the private use of Quaker.
© 2019 Quaker Window Products Co., Inc. All rights reserved.
Quaker reserves the right to change any/all designs without notice.



ELEVATION SCALE 3/4" = 1'-0"



SCALE 1:2

Our products are tested to the standards of and certified by some of the foremost organizations in the fenestration industry.

