

E700 Series 3 1/4" Frame Depth Horizontal Slider

E700 Series Horizontal Slider

Features

- ◇ **Material**
 - Extruded Aluminum
- ◇ **Commercial Framing System**
 - 3 1/4" main frame
 - 0.062" wall thickness of frame
- ◇ **Thermally Enhanced Design**
 - Azon pour and debridge thermal break is 1/2" wide in all main frame and vent rail extrusions
 - Frame and sash mitered and joined with screw fasteners
 - Fin seal wool pile weatherstripping
 - Positive interlocks
- ◇ **Glazing**
 - Impact-rated glazing package
- ◇ **Hardware**
 - Brass rollers with stainless steel axle pins for easy operation
 - Gravity latch
- ◇ **Anchorage Methods**
 - Nailing Fin
 - Trim/Clips
- ◇ **Screen**
 - Extruded aluminum screen frame with BetterVue™ mesh with Watershed® Technology

Options

- ◇ **Available Configurations**
 - Fixed-Active
 - Active-Fixed
 - Active-Fixed-Active
- ◇ **Muntin Choices**
 - Internal or simulated divided lites available
- ◇ **Hardware**
 - Sweep lock
 - Night latch
 - Limited travel latch
 - Wide variety of locking and operating hardware options
- ◇ **Nailing Fin**
- ◇ **Screen**
 - Extruded aluminum screen frame with aluminum wire mesh
 - Extruded aluminum screen frame with sunscreen mesh
 - Extruded aluminum screen frame with stainless steel 0.009" thickness mesh
 - Security screen (limitations apply)
- ◇ **Glazing**
 - Multiple Low-E and argon glazing choices
 - Capillary tubes
 - Wide variety of glazing, tinting and thickness options
- ◇ **Panning & Trim Choices**
 - Wide variety of panning, receptor and trim available

Performance

- ◇ Structural & Thermal (test reports or thermal simulations available upon request)

Model	Horizontal Slider (Fixed/Active)
NAFS Rating	CW-50
Test Size	72" x 66"
Structural Load P.S.F.	75
Air Infiltration	<0.10
Water (No Penetration) P.S.F.	10
U-Value (ranges based on multiple Low-E/ Argon combinations)	
SHGC (ranges based on multiple Low-E/Argon combinations)	
Missile Level	D
Wind Zone	4

Due to periodic re-certification requirements, result shown may vary.

Benefits

- ◇ Meets ASTM 1886 (Large Missile Impact testing)
- ◇ The capacity to match exterior colors for unique project facades
- ◇ The ability to facilitate large sizes for taller and wider window openings

Operating Force:
22 lbf (maintain motion)
1 lbf (latches)

Our products are tested to the standards of and certified by some of the foremost organizations in the fenestration industry.



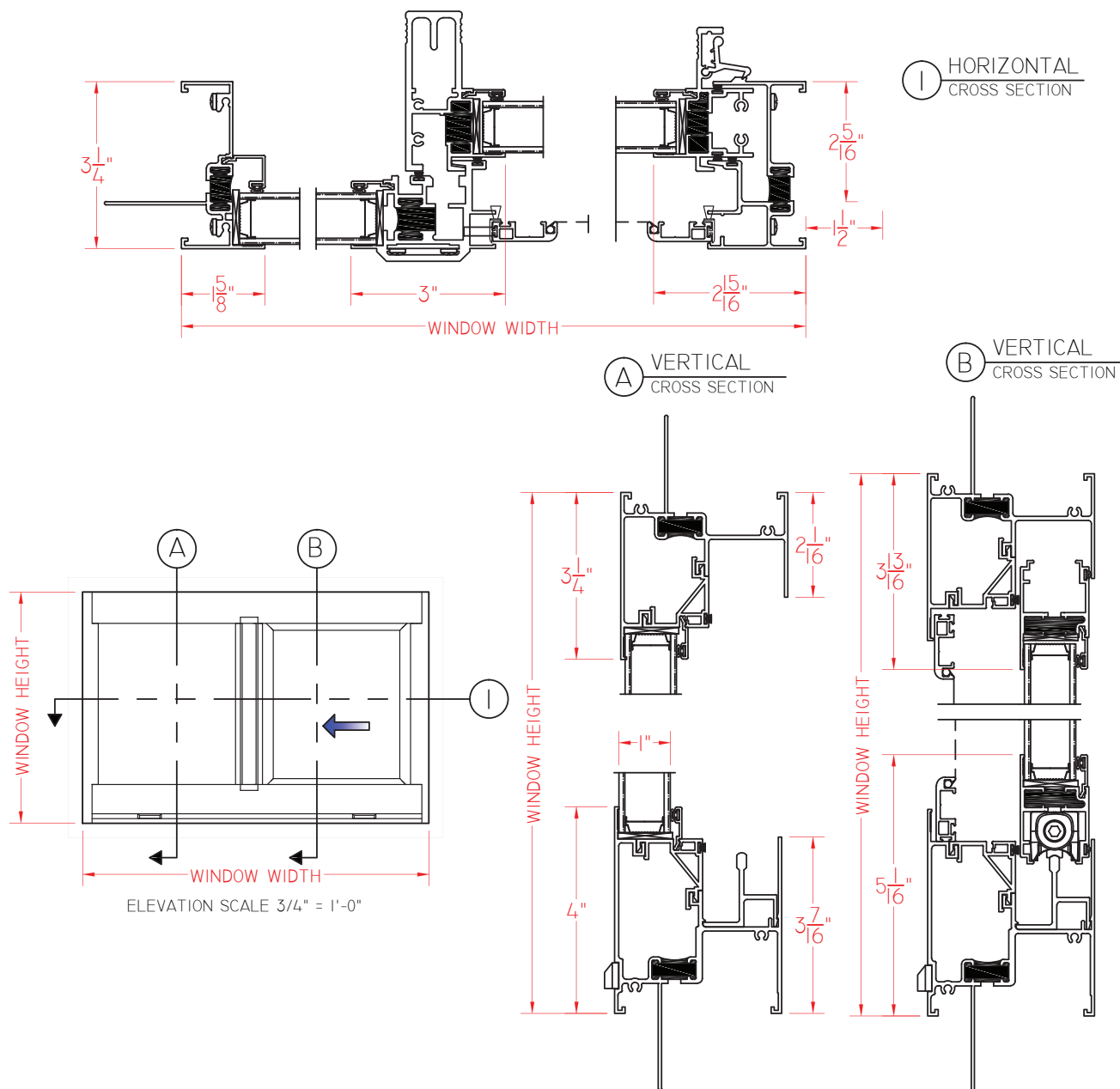


E700 Series 3 1/4" Frame Depth Horizontal Slider

E700 Series Horizontal Slider

Shown with Nailing Fin.
Shown as Fixed/Active
(as viewed from exterior)

This document contains confidential and proprietary information intended for the private use of Quaker.
© 2016 Quaker Window Products Co., Inc. All rights reserved.
Quaker reserves the right to change any/all designs without notice.



SCALE 1:3

Our products are tested to the standards of and certified by some of the foremost organizations in the fenestration industry.



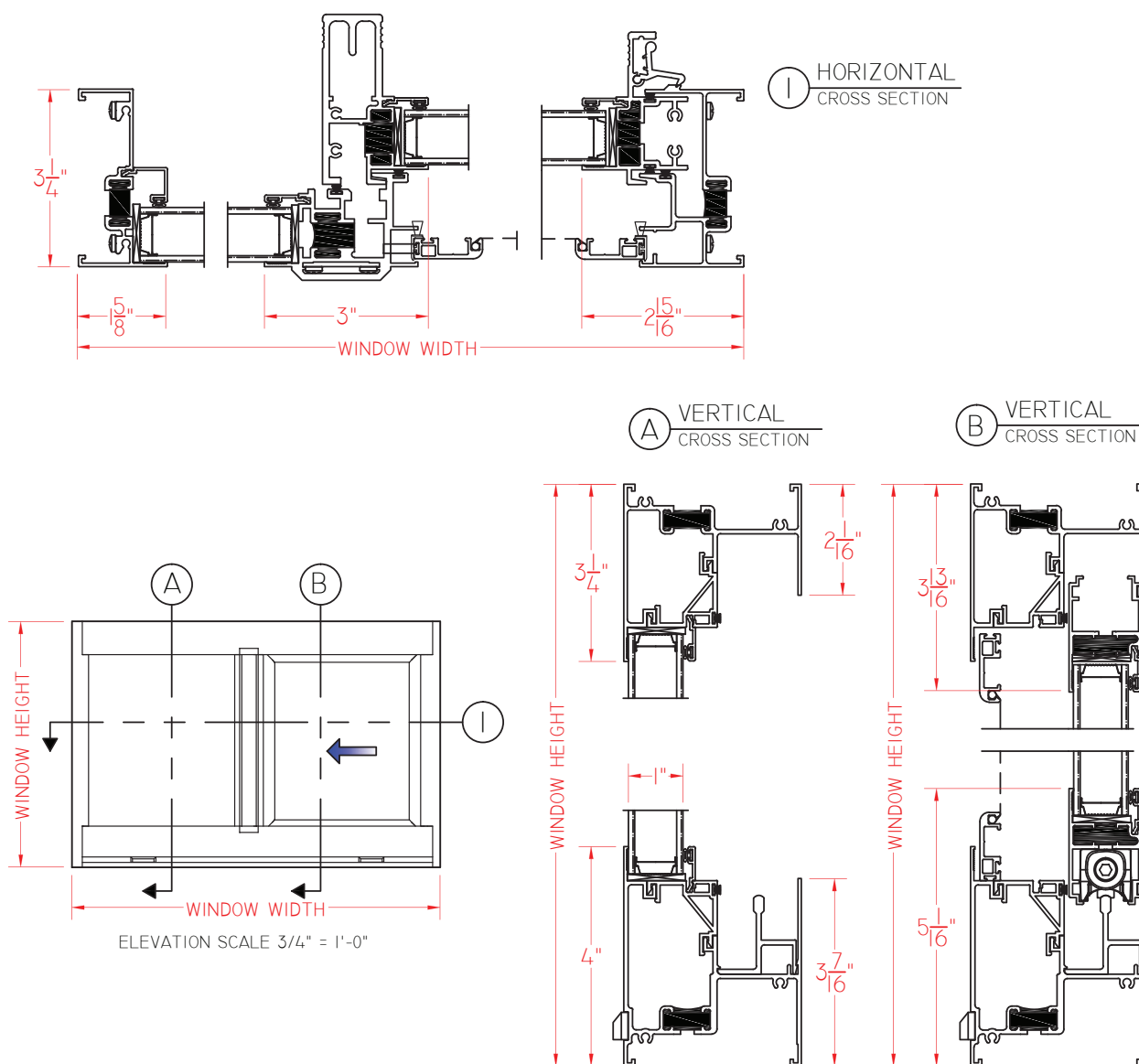


E700 Series 3 1/4" Frame Depth Horizontal Slider

E700 Series Horizontal Slider

Shown without Nailing Fin.
Shown as Fixed/Active
(as viewed from exterior)

This document contains confidential and proprietary information intended for the private use of Quaker.
© 2016 Quaker Window Products Co., Inc. All rights reserved.
Quaker reserves the right to change any/all designs without notice.



SCALE 1:3

Our products are tested to the standards of and certified by some of the foremost organizations in the fenestration industry.

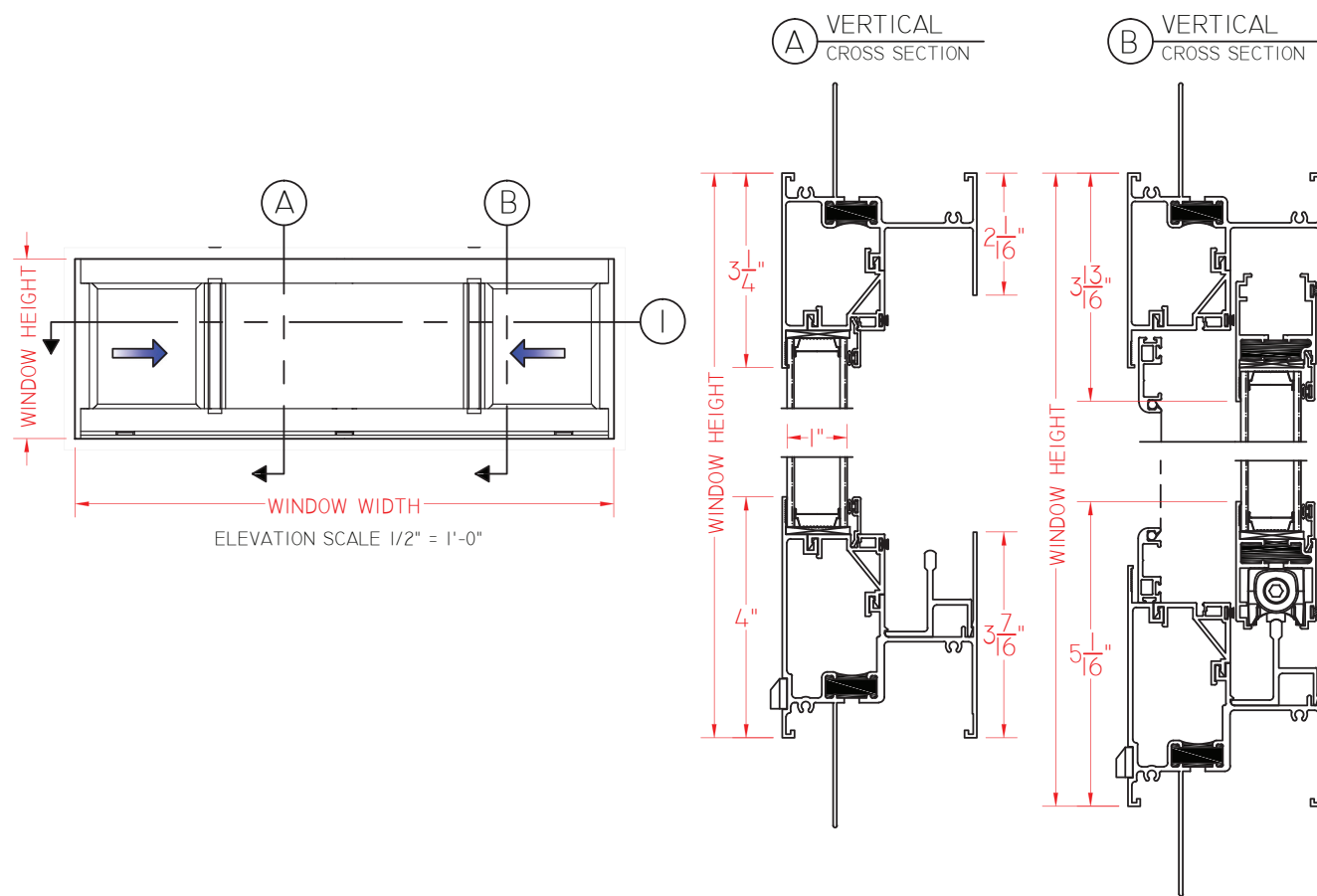
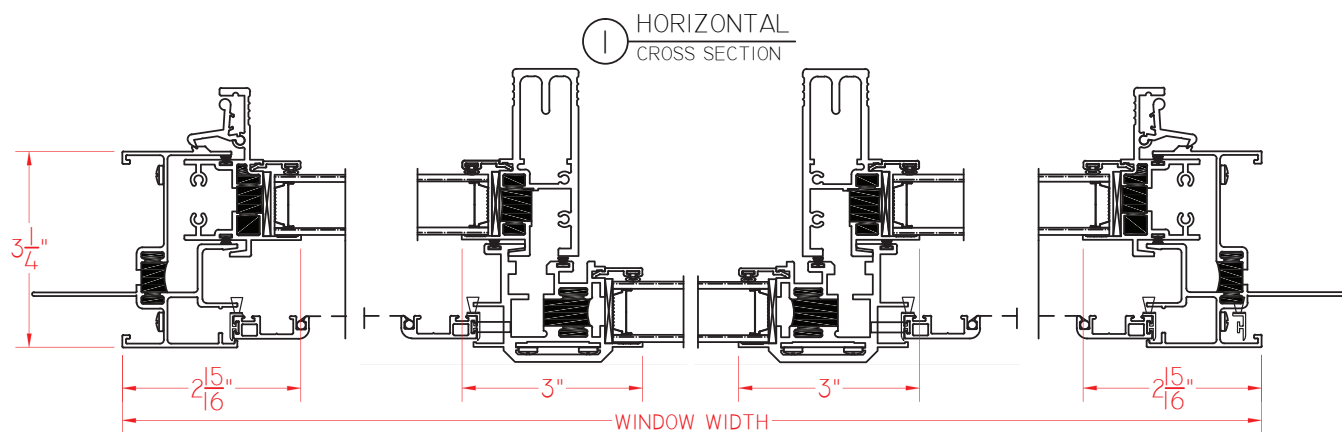




E700 Series End Vent Horizontal Slider

Shown with
Nailing Fin

This document contains confidential and proprietary information intended for the private use of Quaker.
© 2016 Quaker Window Products Co., Inc. All rights reserved.
Quaker reserves the right to change any/all designs without notice.



SCALE 1:3

Our products are tested to the standards of and certified by some of the foremost organizations in the fenestration industry.



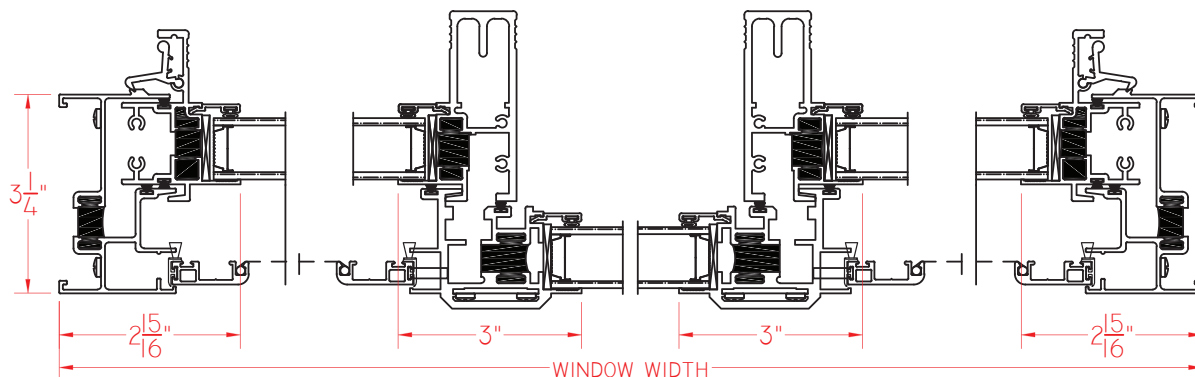


E700 Series End Vent Horizontal Slider

Shown without
Nailing Fin

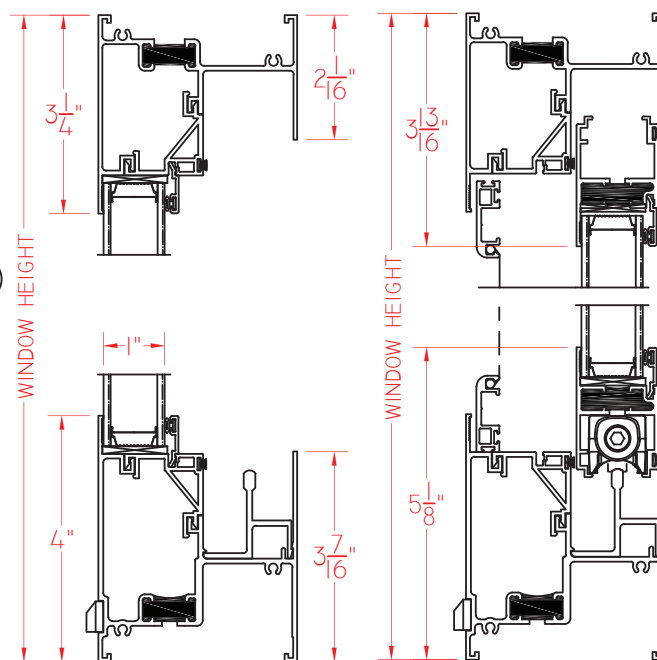
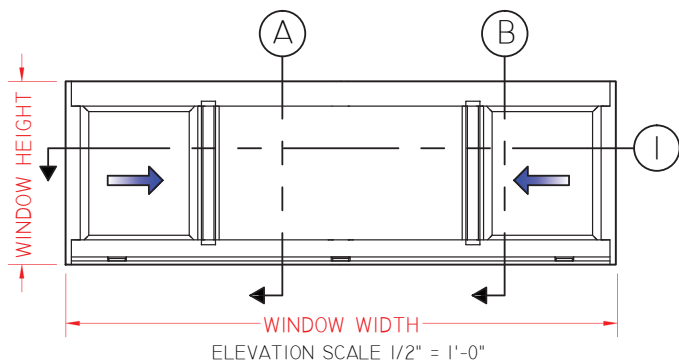
This document contains confidential and proprietary information intended for the private use of Quaker.
© 2016 Quaker Window Products Co., Inc. All rights reserved.
Quaker reserves the right to change any/all designs without notice.

① HORIZONTAL
CROSS SECTION



① A VERTICAL
CROSS SECTION

① B VERTICAL
CROSS SECTION



SCALE 1:3

Our products are tested to the standards of and certified by some of the foremost organizations in the fenestration industry.

