

E700 Series 3 1/4" Frame Depth Fixed (Picture Window)

E700 Series Fixed (Picture Window)

Features

- ◇ **Material**
 - Extruded Aluminum
- ◇ **Commercial Framing System**
 - 3 1/4" main frame
 - 0.062" wall thickness of frame and sash
- ◇ **Thermally Enhanced Design**
 - Azon pour and debridge thermal break is 1/2" wide in all main frame and vent rail extrusions
- ◇ **Glazing**
 - Impact-rated glazing package
- ◇ **Anchorage Methods**
 - Nailing Fin
- ◇ **Screen**
 - Extruded aluminum screen frame with BetterVue™ mesh

Options

- ◇ **Available Configurations**
 - Fixed
- ◇ **Muntin Choices**
 - Internal or simulated divided lites available
- ◇ **Nailing Fin**
- ◇ **Glazing**
 - Multiple Low-E and argon glazing choices
 - Capillary tubes
 - Wide variety of glazing, tinting and thickness options
- ◇ **Panning & Trim Choices**
 - Wide variety of panning, receptor and trim available

Performance

- ◇ Structural Performance (test reports or thermal simulations available upon request)

Model	Fixed (Picture Window)
Test Size	72" x 95"
NAFS Rating	CW-70
Structural Load P.S.F.	105
Air infiltration	<0.10
Water (No Penetration) P.S.F.	10
U-Value (ranges based on multiple Low-E/Argon combinations)	
SHGC (ranges based on multiple Low-E/Argon combinations)	
Missile Level	D
Wind Zone	Level 4

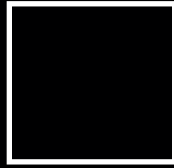
Due to periodic re-certification requirements, result shown may vary.

Benefits

- ◇ Meets ASTM 1886 (Large Missile Impact testing)
- ◇ The capacity to match exterior colors for unique project facades
- ◇ The ability to facilitate large sizes for taller and wider window openings

Our products are tested to the standards of and certified by some of the foremost organizations in the fenestration industry.

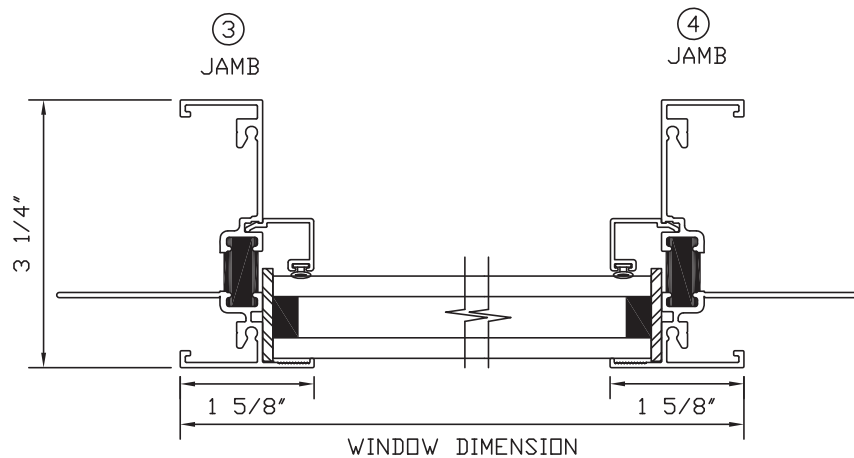
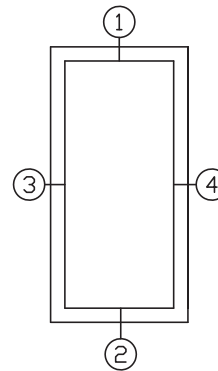
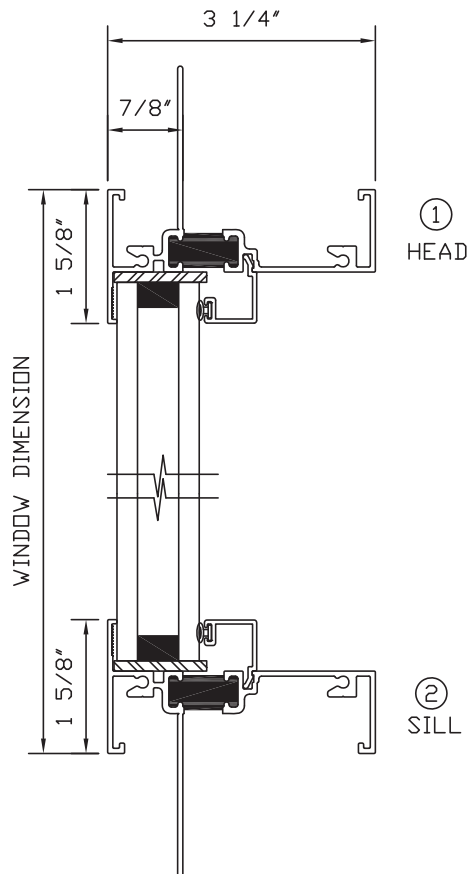




E700 Series 3 1/4" Frame Depth Fixed (Picture Window)

E700 Series Fixed (Picture Window)

This document contains confidential and proprietary information intended for the private use of Quaker.
© 2016 Quaker Window Products Co., Inc. All rights reserved.
Quaker reserves the right to change any/all designs without notice.



EXTERIOR VIEW

Our products are tested to the standards of and certified by some of the foremost organizations in the fenestration industry.

