

## M700 Series 3 1/4" Frame Depth Project-Out

### M700 Series Project-Out

#### Features

- ◇ **Material**
  - Extruded Aluminum
- ◇ **Commercial Framing System**
  - 3 1/4" main frame
  - Sealable corner keys
  - Crimp/Screw connections
  - 0.094" wall thickness of interior and exterior walls, 0.070" wall thickness elsewhere
- ◇ **Enhanced Design**
  - Azo-braided channel receives Azon pour and debridge thermal break which is 1/2" wide in all main frame and vent rail extrusions
  - Clean squared edges
- ◇ **Integral Nailing Fin**
- ◇ **Glazing**
  - Impact-rated insulating glass
- ◇ **Hardware**
  - Heavy-commercial Truth Contour™ locking system
  - Roto hardware with 4-Bar hinges
- ◇ **Anchorage Methods**
  - Nailing Fin
  - Trim/Clips
- ◇ **Screen**
  - Extruded aluminum screen frame with BetterVue™ mesh
- ◇ **Meets ADA Requirements** (ADA Handle Required)

#### Performance

- ◇ Structural & Thermal (test reports or thermal simulations available upon request)

Model	Project-out
Test Size	48" x 60"
NAFS Rating	AW-70
Structural Load P.S.F.	105
Air at 50 MPH (cfm/ft²)	<.10
Water (No Penetration) P.S.F.	15
U-Value (ranges based on multiple Low-E/Argon combinations)	
SHGC (ranges based on multiple Low-E/Argon combinations)	
Missile Level	D
Wind Zone	4

#### Options

- ◇ **Available Configurations**
  - Project-out
  - Crank-out
- ◇ **Muntin Choices**
  - Internal or simulated divided lites available
- ◇ **Limited travel hardware**
- ◇ **Screen**
  - Extruded aluminum screen frame with aluminum wire mesh
  - Extruded aluminum screen frame with Sunscreen mesh
  - Extruded aluminum screen frame with SeeVue mesh
  - Extruded aluminum screen frame with UltraVue mesh
- ◇ **Glazing**
  - Multiple Low-E and argon glazing choices
  - Capillary tubes
  - Wide variety of glazing, tinting and thickness options
- ◇ **Panning & Trim Choices**
  - Wide variety of panning, receptor and trim available

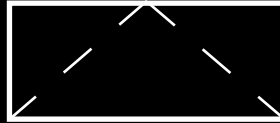
#### Benefits

- ◇ Meets ASTM 1886 (Large Missile Impact testing)
- ◇ The capacity to match exterior colors for unique project facades
- ◇ The ability to facilitate large sizes for taller and wider window openings
- ◇ Modern appearance merged with superior structural integrity

Due to periodic re-certification requirements, result shown may vary.

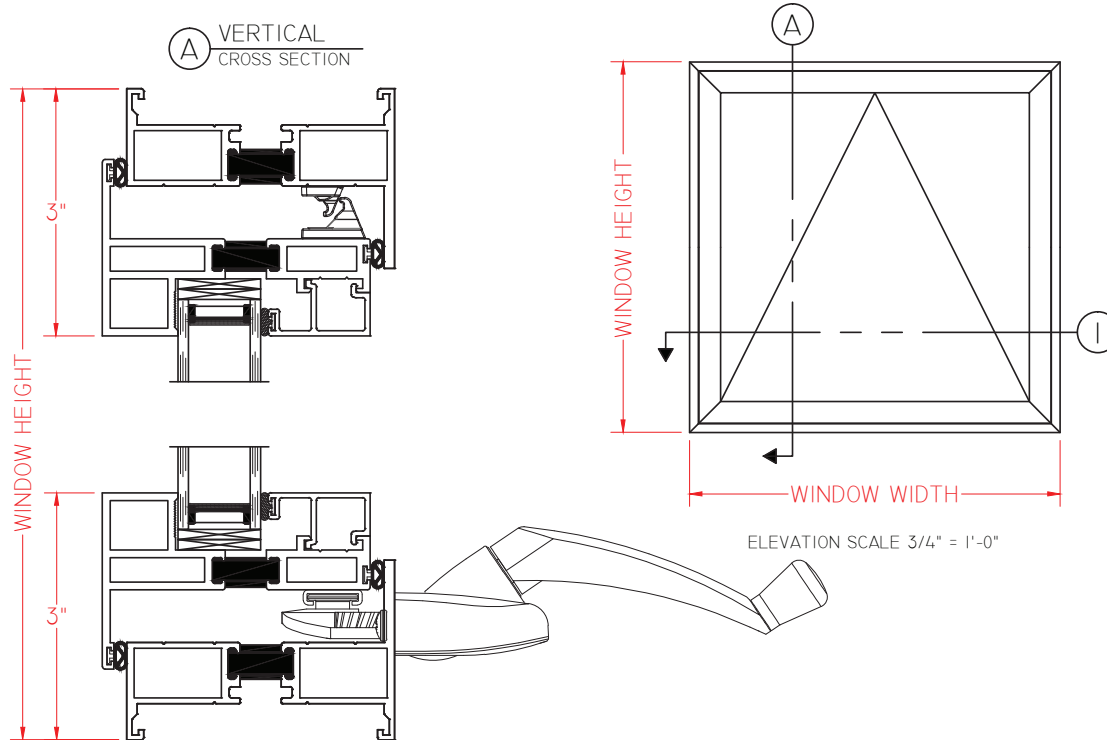
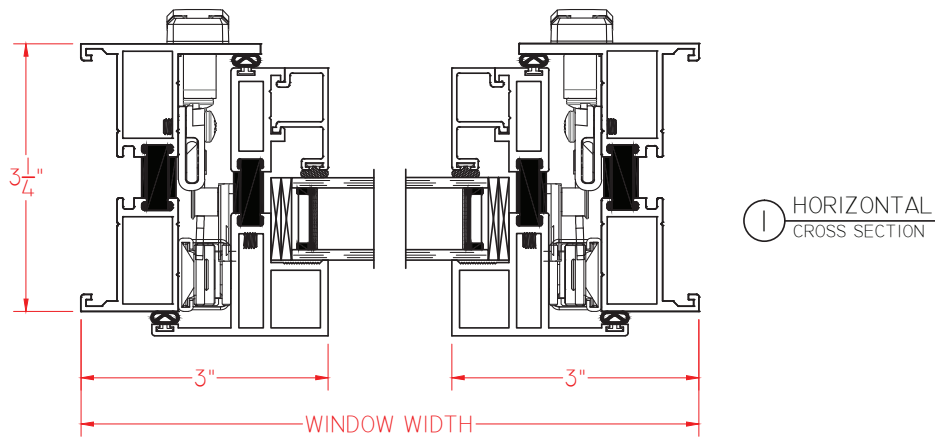
Our products are tested to the standards of and certified by some of the foremost organizations in the fenestration industry.





## M700 Series Project-Out

This document contains confidential and proprietary information intended for the private use of Quaker.  
© 2021 Quaker Window Products Co., Inc. All rights reserved.  
Quaker reserves the right to change any/all designs without notice.



SCALE 1:2

Our products are tested to the standards of and certified by some of the foremost organizations in the fenestration industry.

