



# M700 4 1/2" Frame Depth Sliding Door

## M700 Series Sliding Door

### Features

- ◇ **Material**
  - Extruded Aluminum
- ◇ **Commercial Framing System**
  - 5" main frame
  - 0.070 extruded wall thickness of frame
  - 0.062" extruded wall thickness of panel
  - Frames shipped K.D.
- ◇ **Thermally Enhanced Design**
  - Azon pour and debridge thermal break is 1/2" wide in all main frame and vent rail extrusions
  - Internal weep system for effective water damage
  - Steel Roller System
  - Mitered panels with heavy-duty corner keys
- ◇ **Integral Nailing Fin**
- ◇ **Glazing**
  - Impact-rated tempered insulating glass
- ◇ **Hardware**
  - Heavy-duty steel rollers operate in stainless steel roller track, making operation easy and smooth
  - D-Loop Handle hardware (interior & exterior)
- ◇ **Anchorage Method**
  - Nailing Fin
- ◇ **Screen**
  - Extruded aluminum screen frame with BetterVue™ mesh with WaterShed® technology

### Performance

- ◇ Structural & Thermal (test reports or thermal simulations available upon request)

Model	Sliding Door Active-Fixed
Test Size	123" x 96"
NAFS Rating	AW-50
Design Pressure	50
Air Infiltration (cfm/ft²)	
Water (No Penetration) P.S.F.	
U-Value (ranges based on multiple Low-E/Argon combinations)	
SHGC (ranges based on multiple Low-E/Argon combinations)	
Missile Level	D
Wind Zone	Zone 4

Due to periodic re-certification requirements, result shown may vary.

### Options

- ◇ **Available Configurations**
  - Fixed-Active
  - Active-Fixed
- ◇ **Muntin Choices**
  - Internal or simulated divided lites available
- ◇ **Screen**
  - Extruded aluminum screen frame with aluminum wire mesh
  - Extruded aluminum screen frame with sunscreen mesh
  - Extruded aluminum screen frame with stainless steel 0.009" thickness mesh
- ◇ **Glazing**
  - Multiple Low-E and argon glazing choices
  - Sound attenuation glazing packages for STC/OITC
- ◇ **Hardware**
  - Premium 2" roller system
  - Flush Handle hardware
- ◇ **Panning & Trim Choices**
  - Wide variety of panning, receptor and trim available

### Benefits

- ◇ Meets ASTM 1886 (Large Missile Impact testing)
- ◇ The capacity to match exterior colors for unique project facades
- ◇ The ability to facilitate custom sizes for taller and wider door openings
- ◇ Florida Building Approved FL30496

Operating Force:  
M700 Active-Fixed  
37.3 lbf (initiate motion),  
24.3 lbf (maintain motion),  
<1 lbf (latches)

Our products are tested to the standards of and certified by some of the foremost organizations in the fenestration industry.



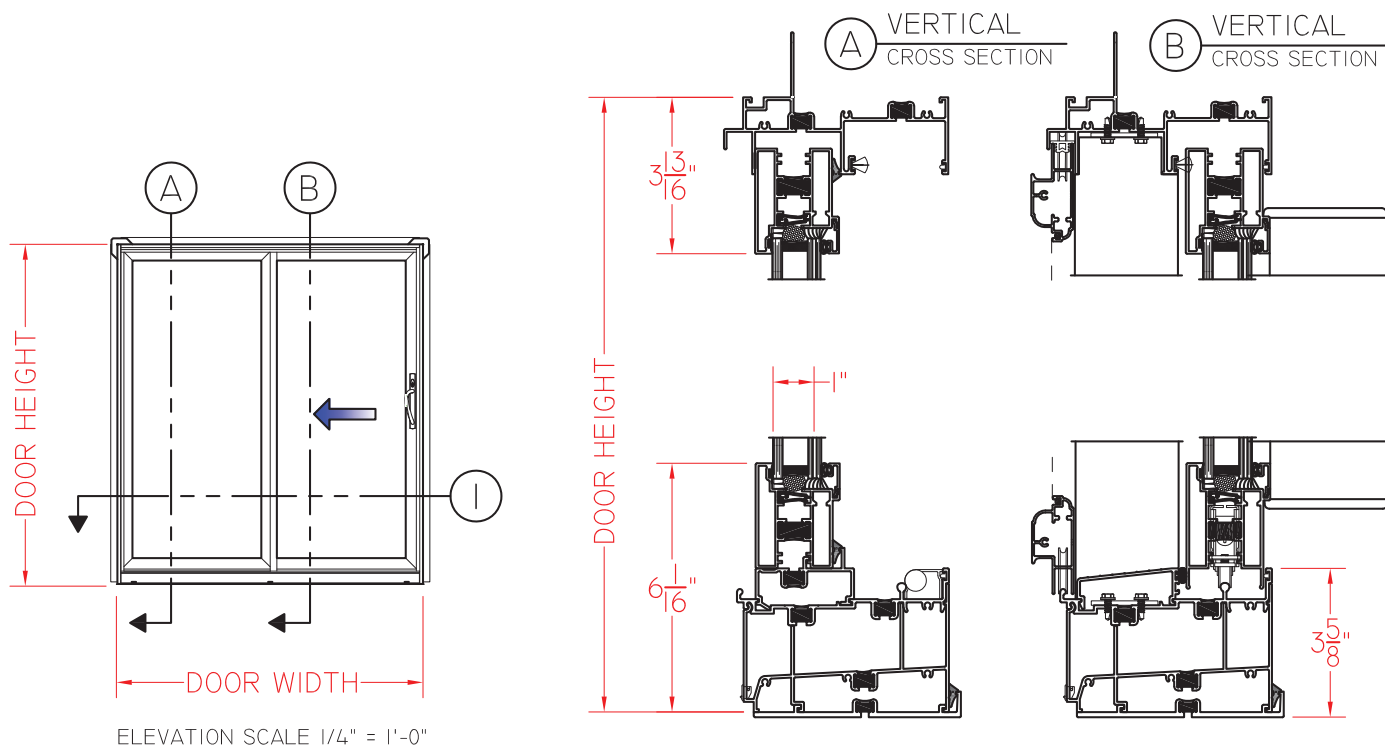
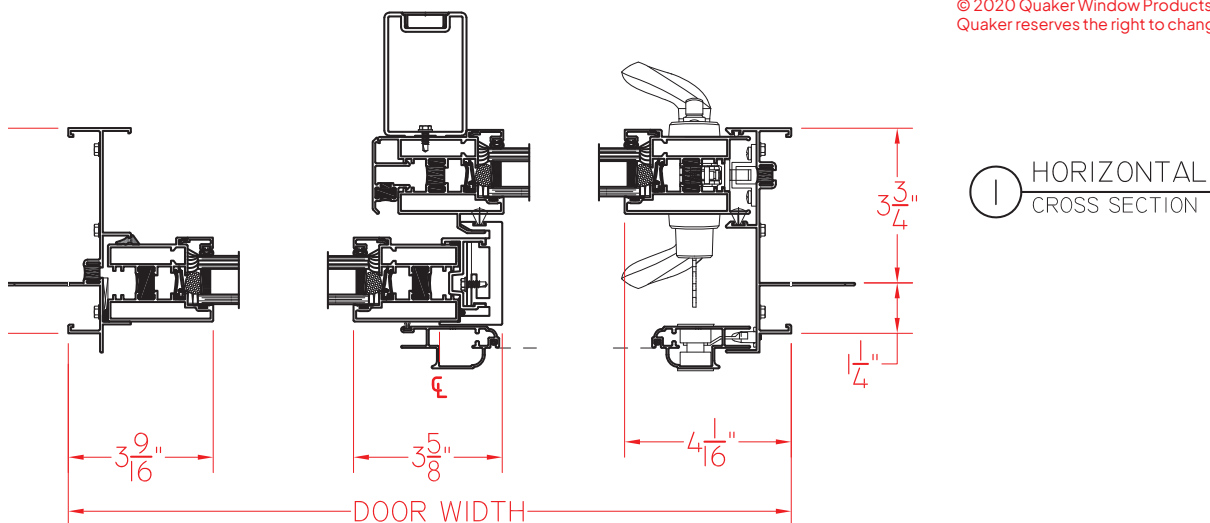


# M700 4 1/2" Frame Depth Sliding Door

## M700 Series Sliding Door

Fixed/Active Model  
shown (as viewed  
from exterior)

This document contains confidential and proprietary information intended for the private use of Quaker.  
© 2020 Quaker Window Products Co., Inc. All rights reserved.  
Quaker reserves the right to change any/all designs without notice.



Our products are tested to the standards of and certified by some of the foremost organizations in the fenestration industry.

